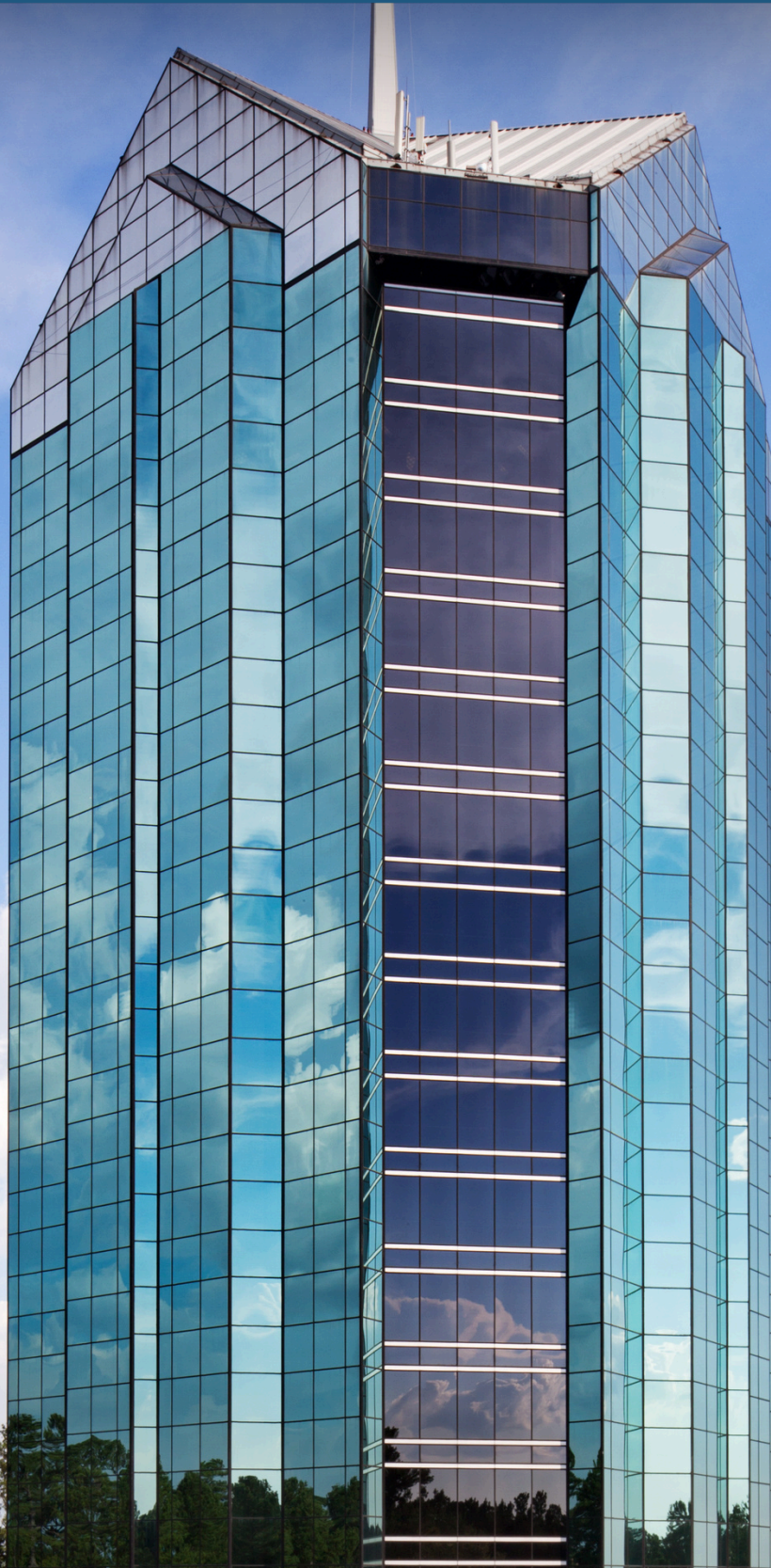


# UNIVERSITY TOWER

3100 TOWER BLVD, DURHAM, NC 27707



**MORRIS**  
COMMERCIAL

Morris Commercial, Inc.  
600 Market Street, Suite 200 Chapel Hill, North Carolina 27516  
[www.morriscommercial.com](http://www.morriscommercial.com)

# UNIVERSITY TOWER

3100 TOWER BLVD, DURHAM, NC 27707



- Prime location positioned between Durham and Chapel Hill with convenient access to I-40, RTP, and RDU Airport
- Immediate proximity to the retail, dining, and amenities at University Hill
- Bright office environments featuring exceptional natural light and sweeping skyline views
- Professionally managed property focused on responsive service and operational efficiency
- Flexible suite sizes and layouts to accommodate a variety of business needs and growth plans
- Ideal fit for professional services firms, marketplace users, and collaborative office teams
- Polished and efficient alternative to traditional office space options in the market
- Centrally located for clients and employees traveling throughout the Triangle region

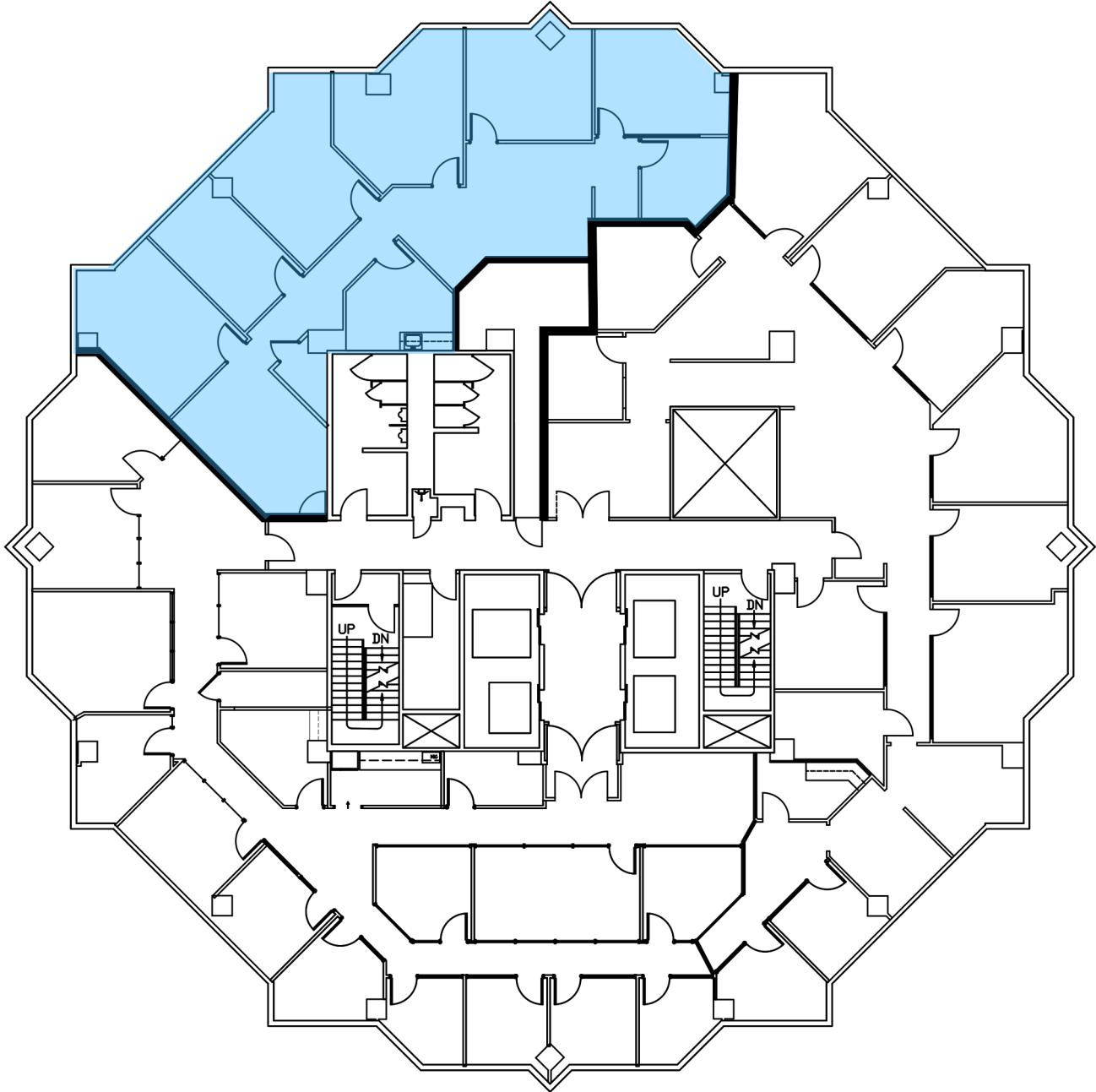


**MORRIS**  
COMMERCIAL

Morris Commercial, Inc.  
600 Market Street, Suite 200 Chapel Hill, North Carolina 27516  
[www.morriscommercial.com](http://www.morriscommercial.com)

# UNIVERSITY TOWER

3100 TOWER BLVD, DURHAM, NC 27707



**Suite 800- approx. 2,552-rsf**

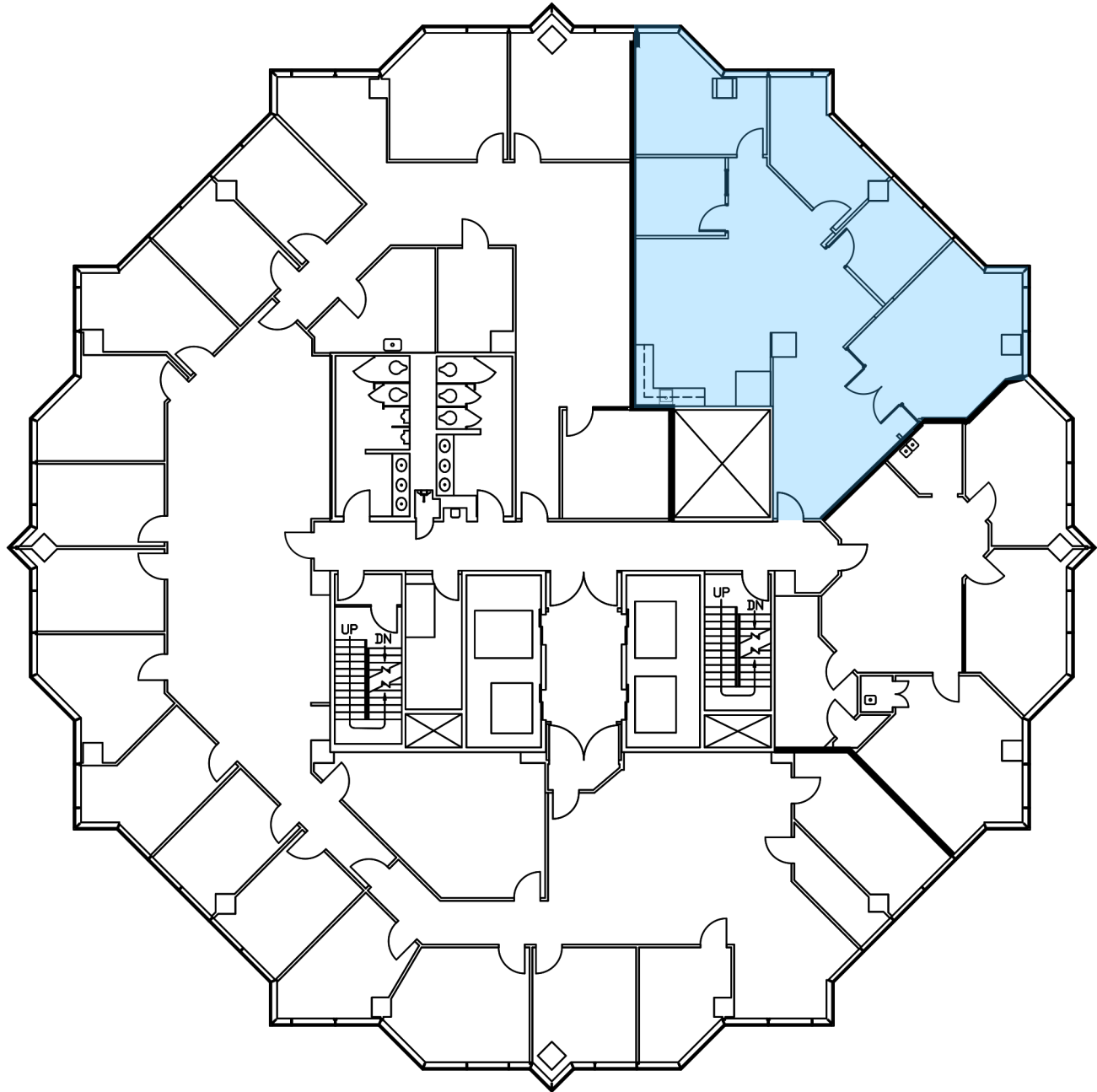


**MORRIS**  
COMMERCIAL

Morris Commercial, Inc.  
600 Market Street, Suite 200 Chapel Hill, North Carolina 27516  
[www.morriscommercial.com](http://www.morriscommercial.com)

# UNIVERSITY TOWER

3100 TOWER BLVD, DURHAM, NC 27707



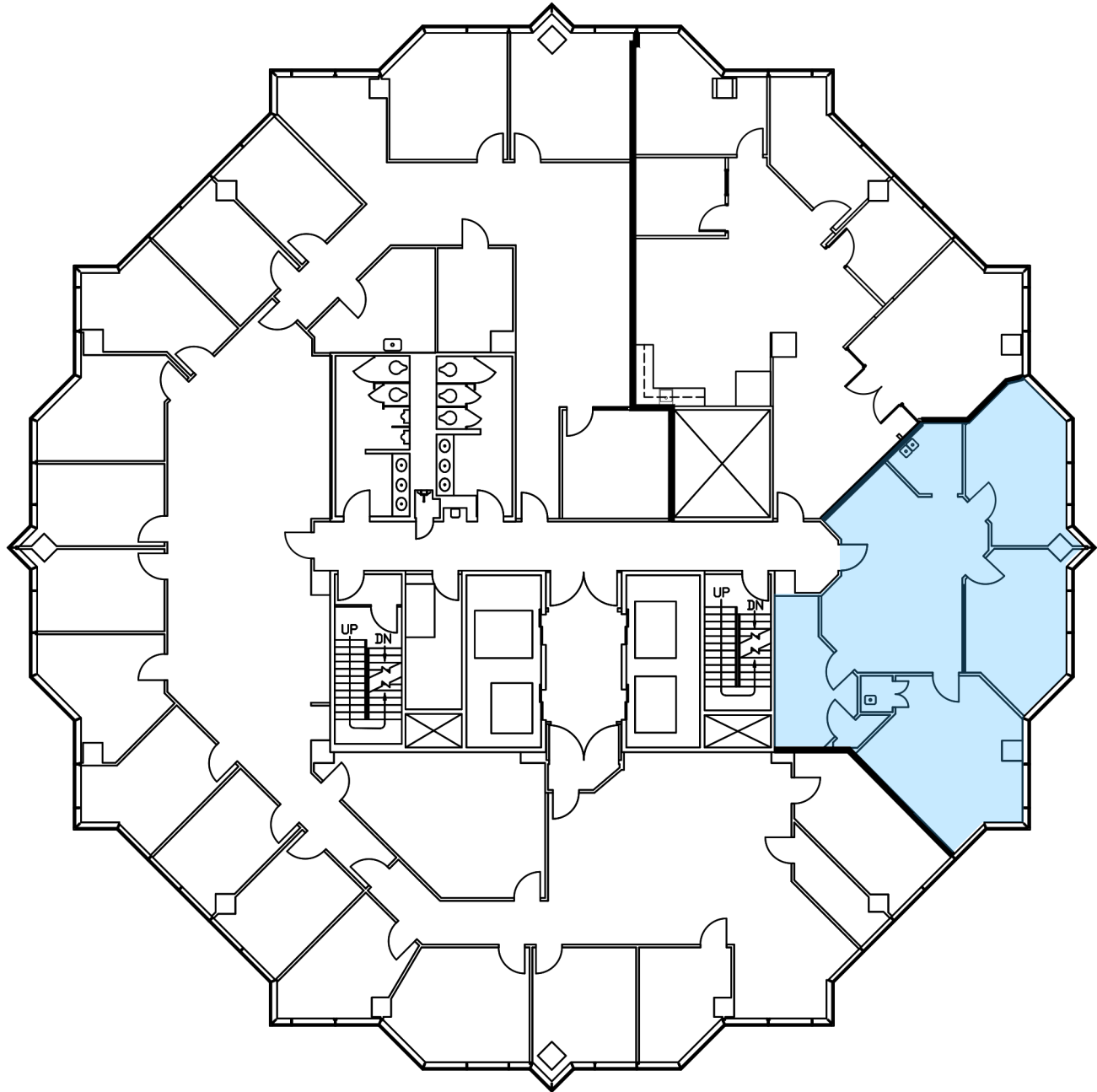
**Suite 925- approx. 1,850-rsf**



Morris Commercial, Inc.  
600 Market Street, Suite 200 Chapel Hill, North Carolina 27516  
[www.morriscommercial.com](http://www.morriscommercial.com)

# UNIVERSITY TOWER

3100 TOWER BLVD, DURHAM, NC 27707



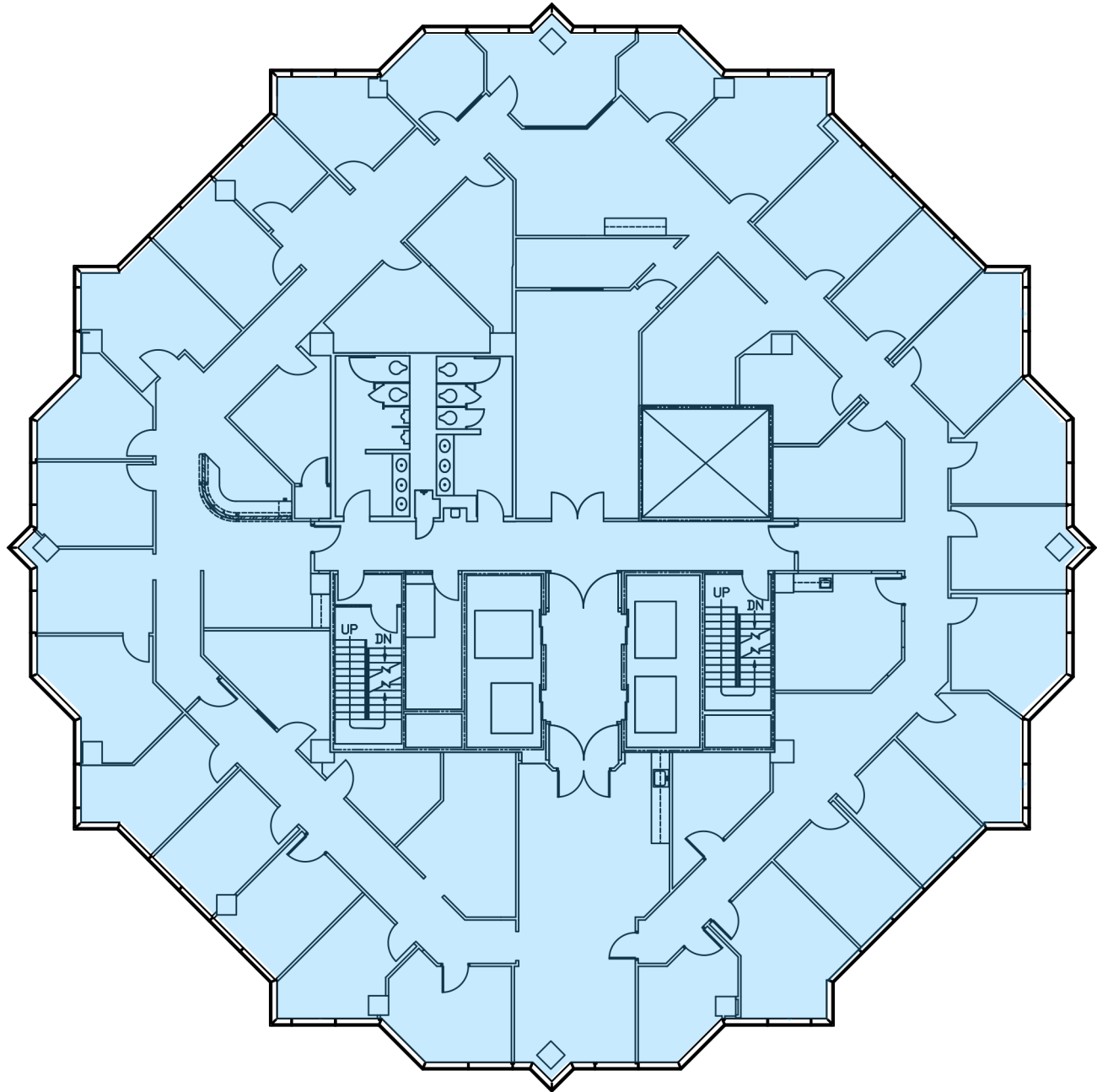
**Suite 901- approx. 1,483-rsf**



Morris Commercial, Inc.  
600 Market Street, Suite 200 Chapel Hill, North Carolina 27516  
[www.morriscommercial.com](http://www.morriscommercial.com)

# UNIVERSITY TOWER

3100 TOWER BLVD, DURHAM, NC 27707



**Suite 1000- approx. 11,506-rsf**

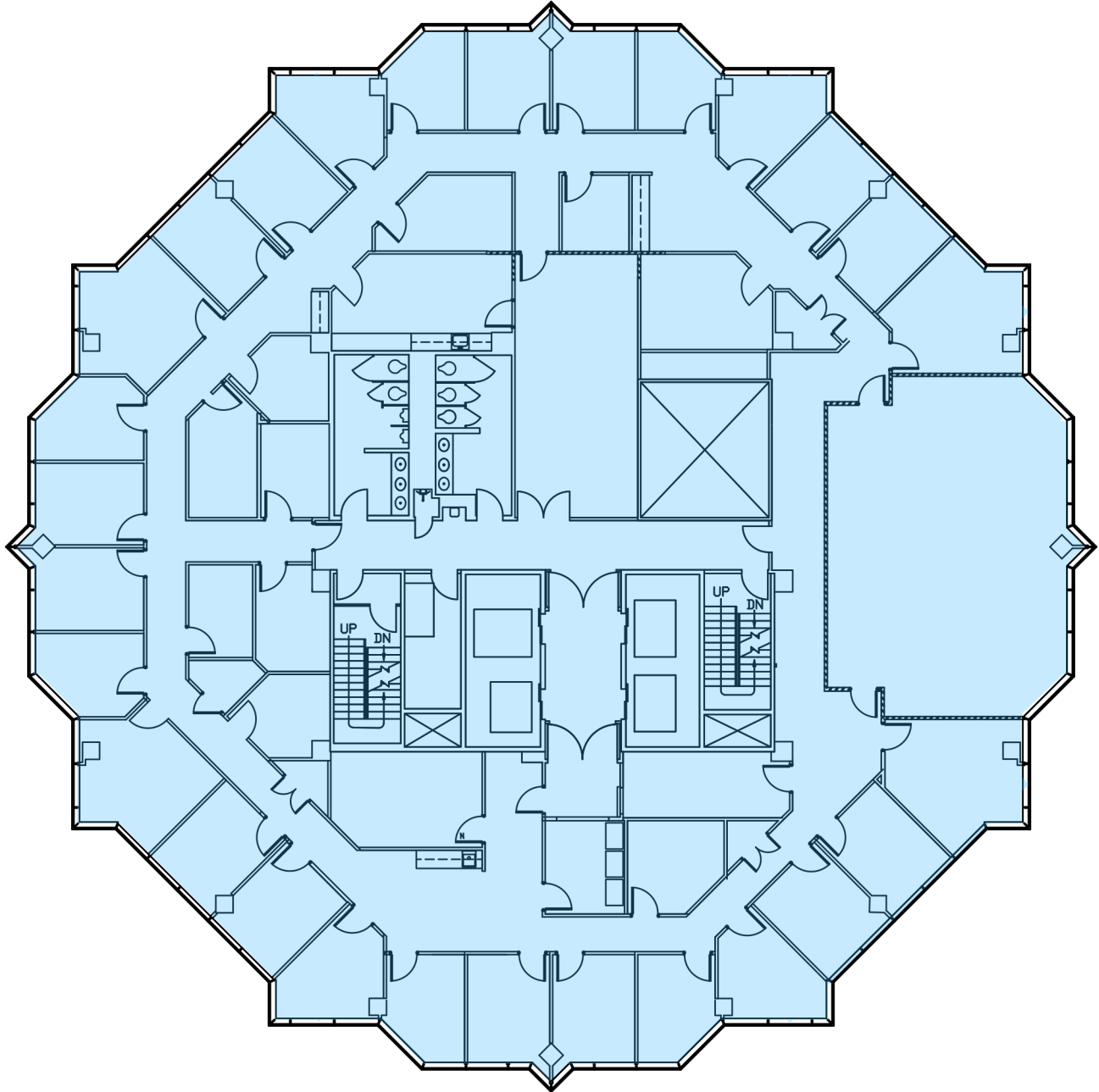


**MORRIS**  
COMMERCIAL

Morris Commercial, Inc.  
600 Market Street, Suite 200 Chapel Hill, North Carolina 27516  
[www.morriscommercial.com](http://www.morriscommercial.com)

# UNIVERSITY TOWER

3100 TOWER BLVD, DURHAM, NC 27707



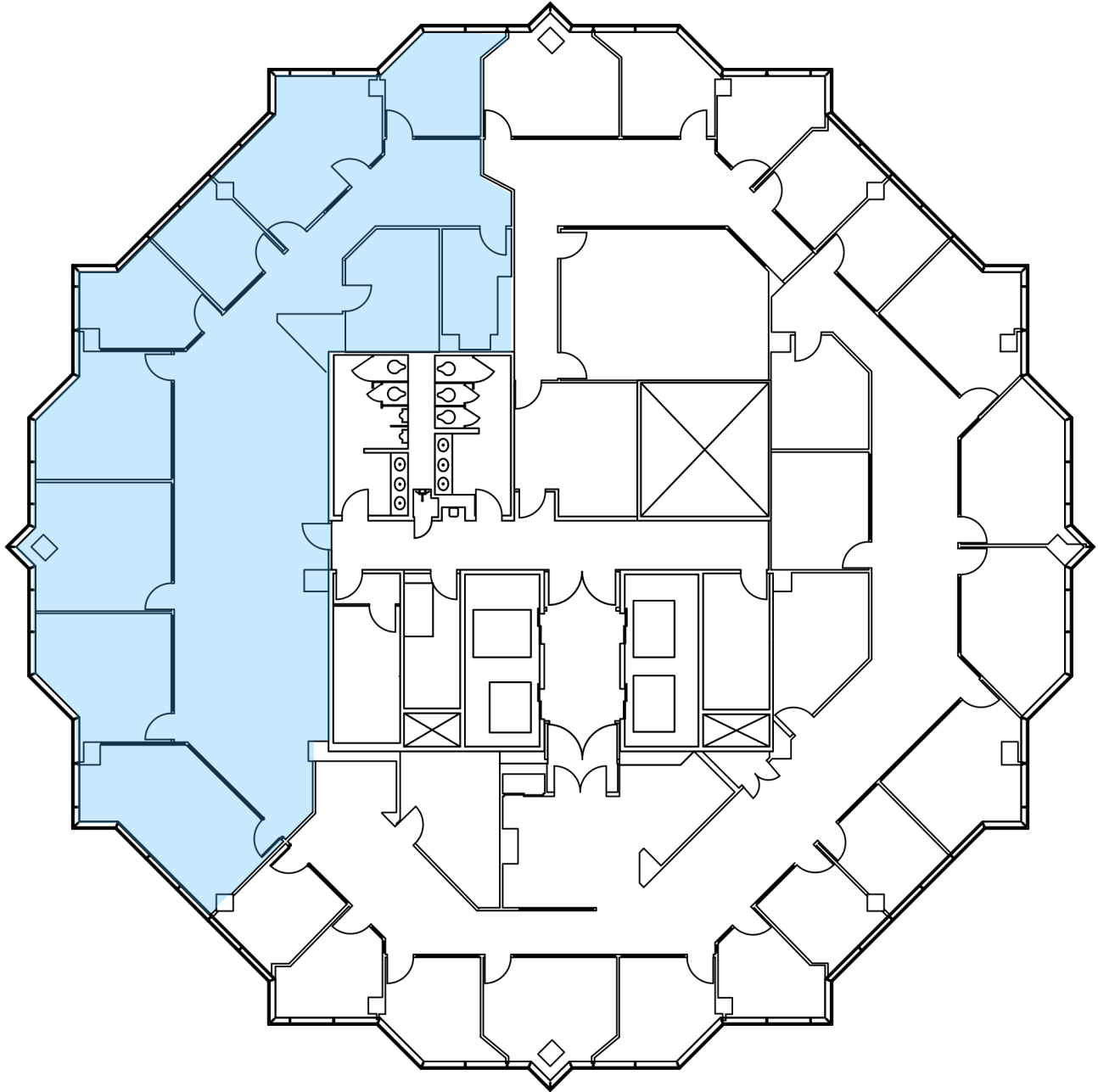
**Suite 1400- approx. 11,725-rsf**



Morris Commercial, Inc.  
600 Market Street, Suite 200 Chapel Hill, North Carolina 27516  
[www.morriscommercial.com](http://www.morriscommercial.com)

# UNIVERSITY TOWER

3100 TOWER BLVD, DURHAM, NC 27707



**Suite 1510- approx. 3,835-rsf**



**MORRIS**  
COMMERCIAL

Morris Commercial, Inc.  
600 Market Street, Suite 200 Chapel Hill, North Carolina 27516  
[www.morriscommercial.com](http://www.morriscommercial.com)

# UNIVERSITY TOWER

3100 TOWER BLVD, DURHAM, NC 27707



John Morris, CCIM  
919-417-2492

[jmorris@morriscommercial.com](mailto:jmorris@morriscommercial.com)

Eric Shriver  
919-389-6519

[eshriver@morriscommercial.com](mailto:eshriver@morriscommercial.com)



**MORRIS**  
COMMERCIAL

Morris Commercial, Inc.  
600 Market Street, Suite 200 Chapel Hill, North Carolina 27516  
[www.morriscommercial.com](http://www.morriscommercial.com)