

97-77 Queens Boulevard

Rego Park, Queens, NY

Flexible Space Available:

Suite B Tower - 1,134 RSF

Suite 602 - 1,903 RSF

Suite 701 - 4,187 RSF

Suite 1100 - 3,188 RSF

Suite 1200 - 20,000 RSF (will divide)

- + Parking Available
- + Subway to Midtown one block away (63rd Drive / Rego Park station)
- + Bus stop in front of building
- + Full time security
- + Operable windows
- + Excellent window to floor ratio with efficient floor plates
- + Retail and restaurant amenities surround site (Rego Center, Queens Centre Mall)
- + Direct access to Long Island Expressway and Grand Central Parkway

Immediate Availability



Contact Us

Roy Chipkin

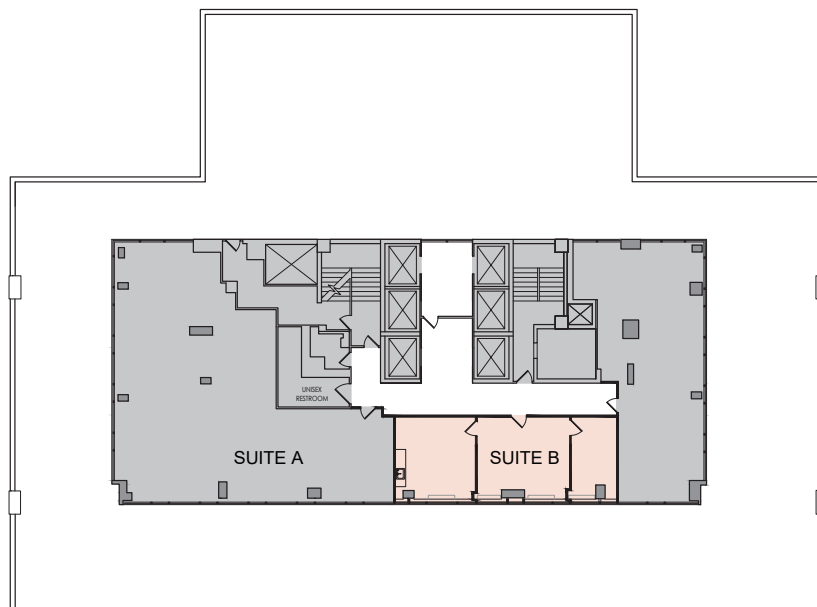
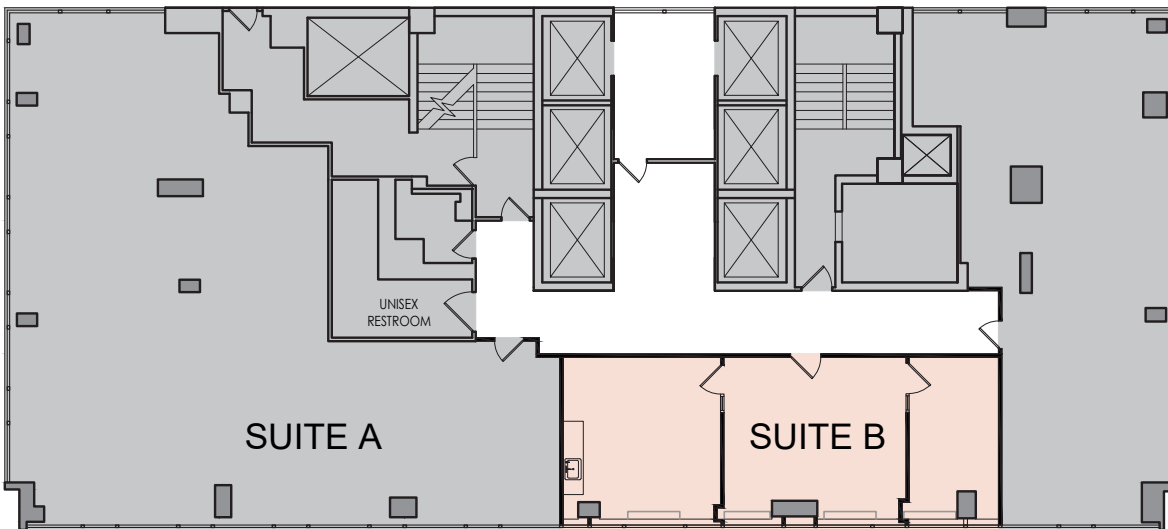
Senior Vice President
+1 631 370 6025
roy.chipkin@cbre.com

Michael Leary

LeFrak Commercial Leasing | Director
+1 718 575 4669
mleary@lefrakcommercial.com

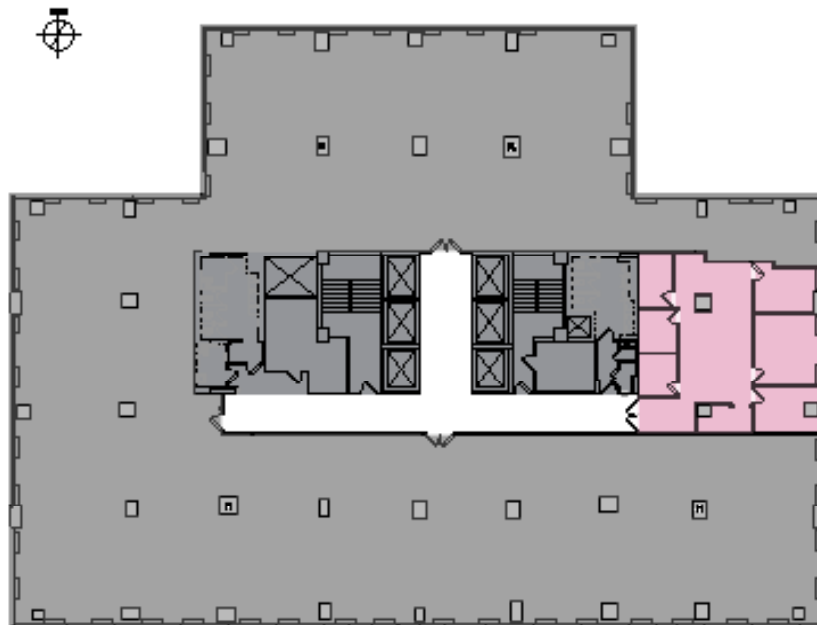
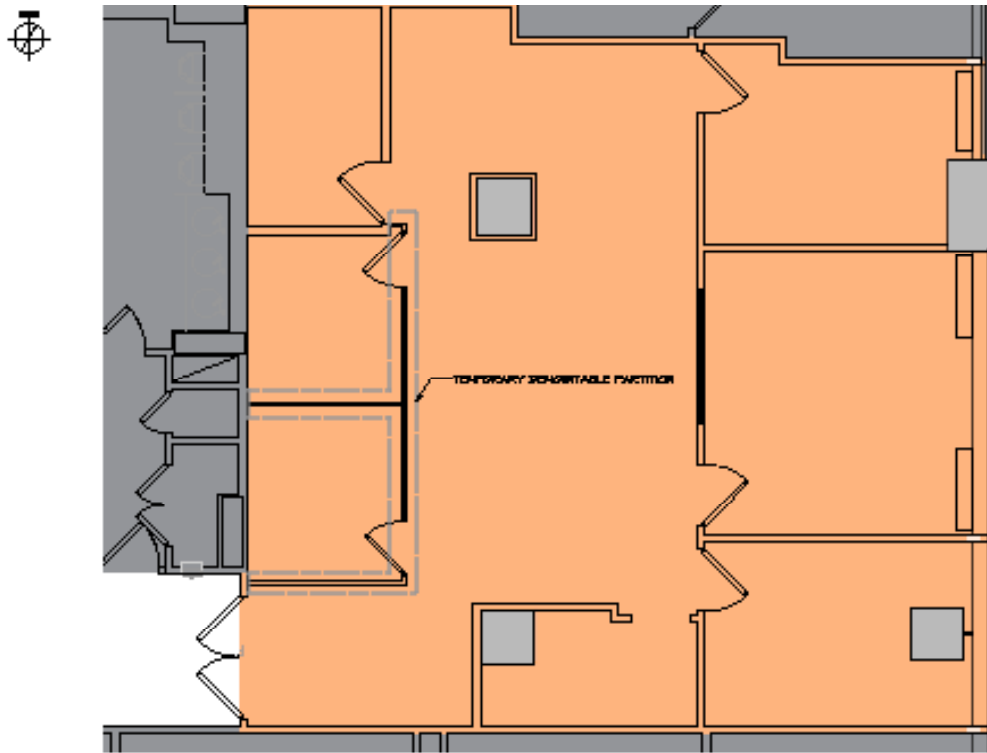
Tower Floor

SUITE B - 1,134 RSF



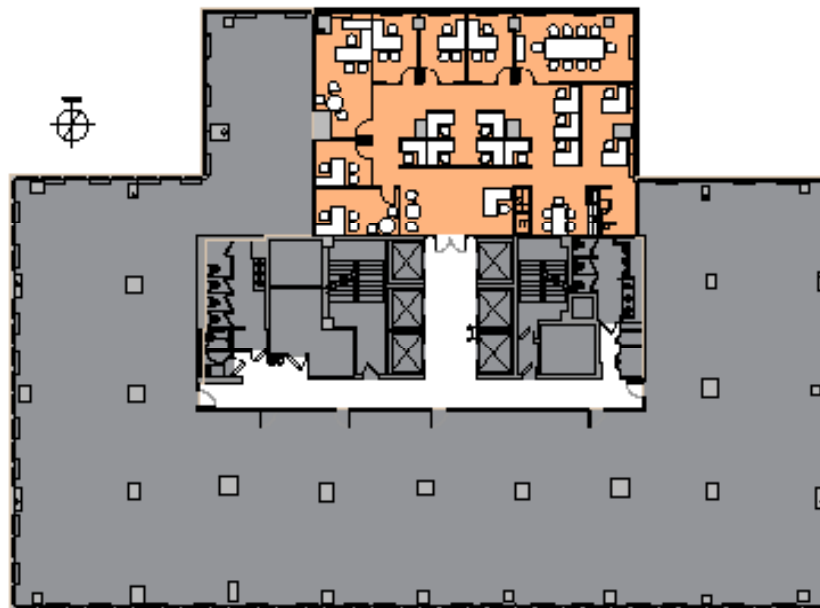
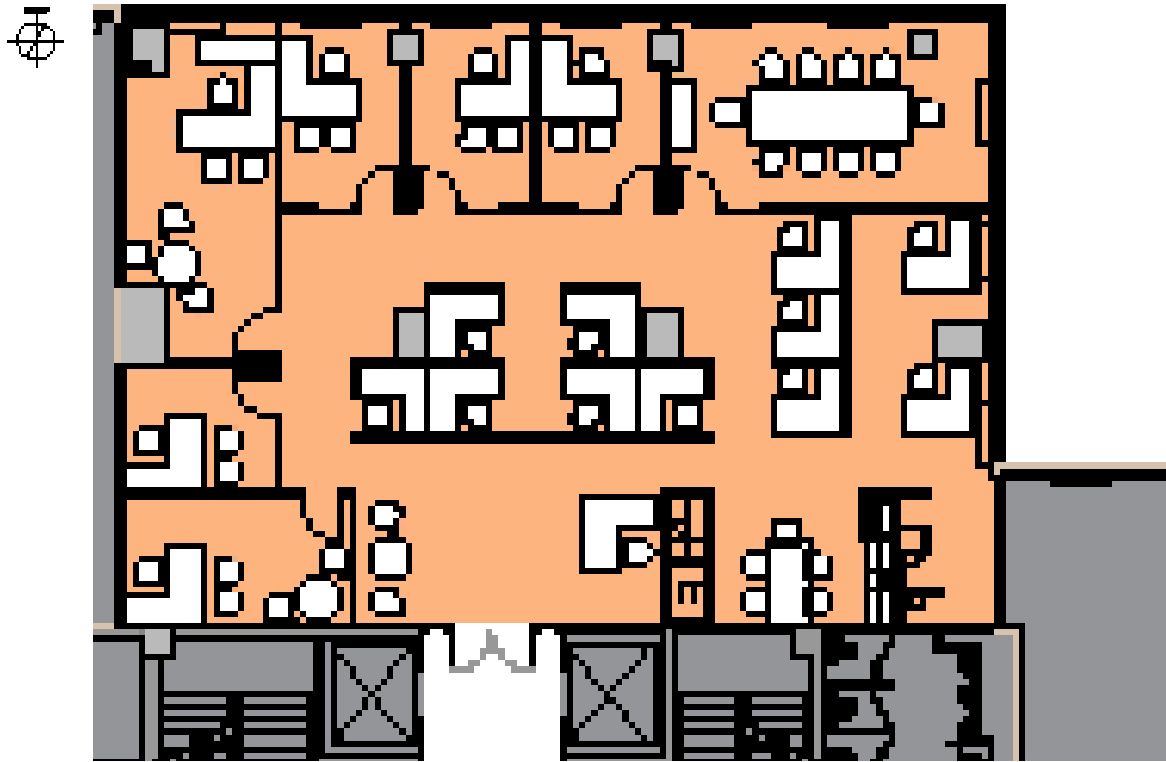
Sixth Floor

SUITE 602 - 1,903 RSF



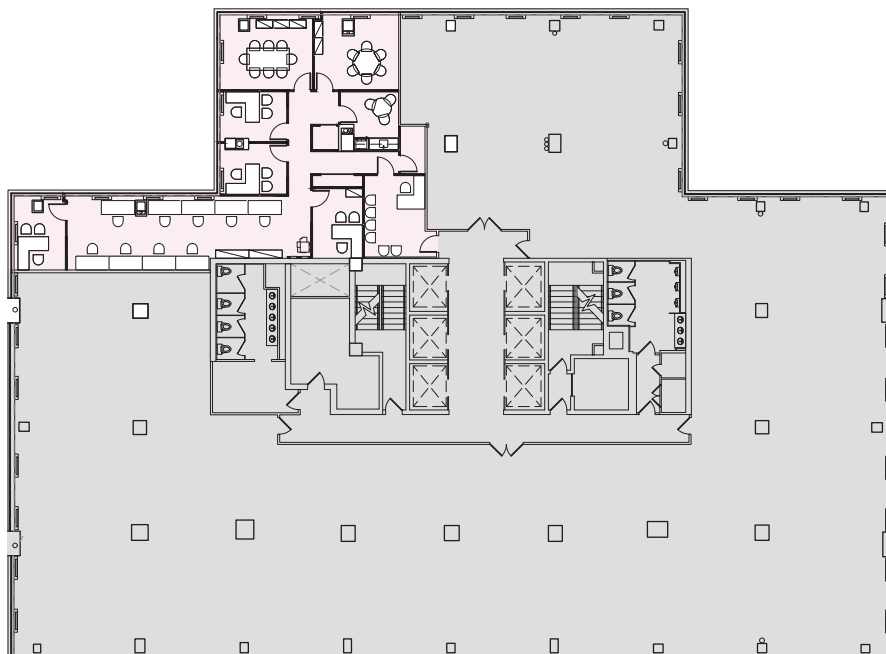
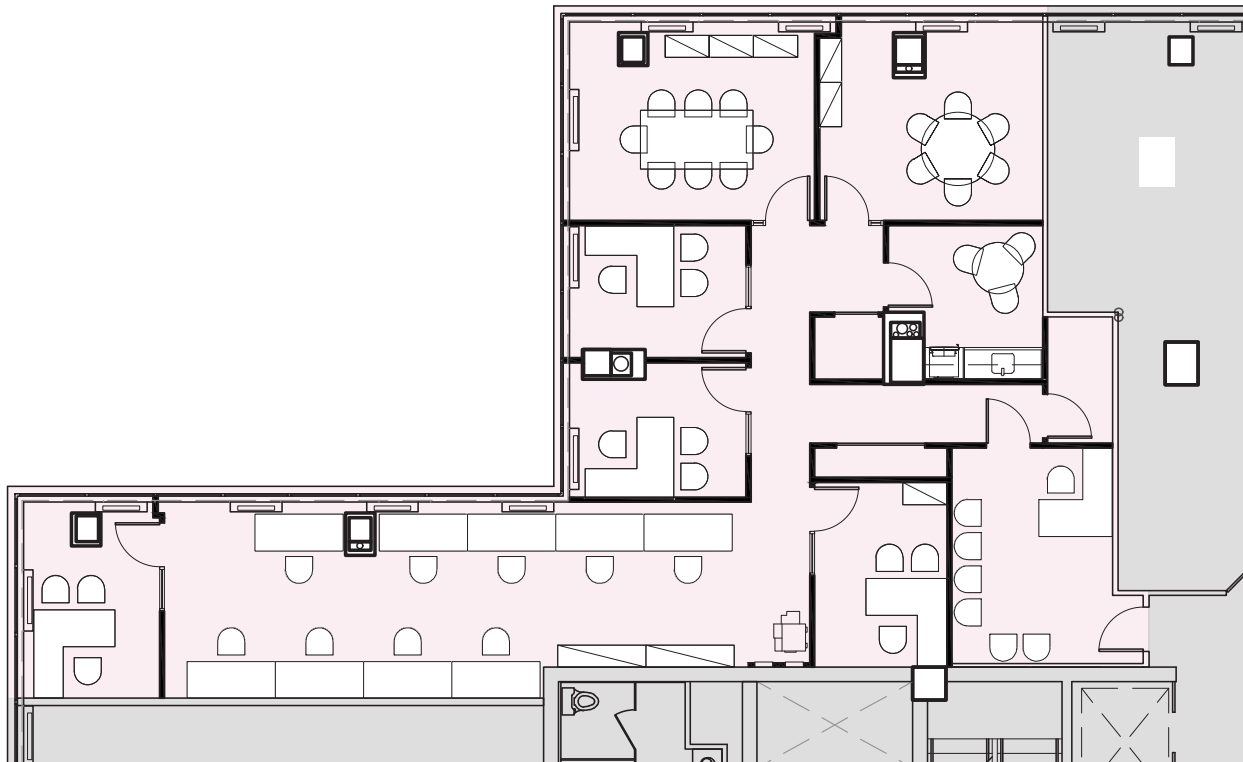
Seventh Floor

SUITE 701 - 4,187 RSF



Eleventh Floor

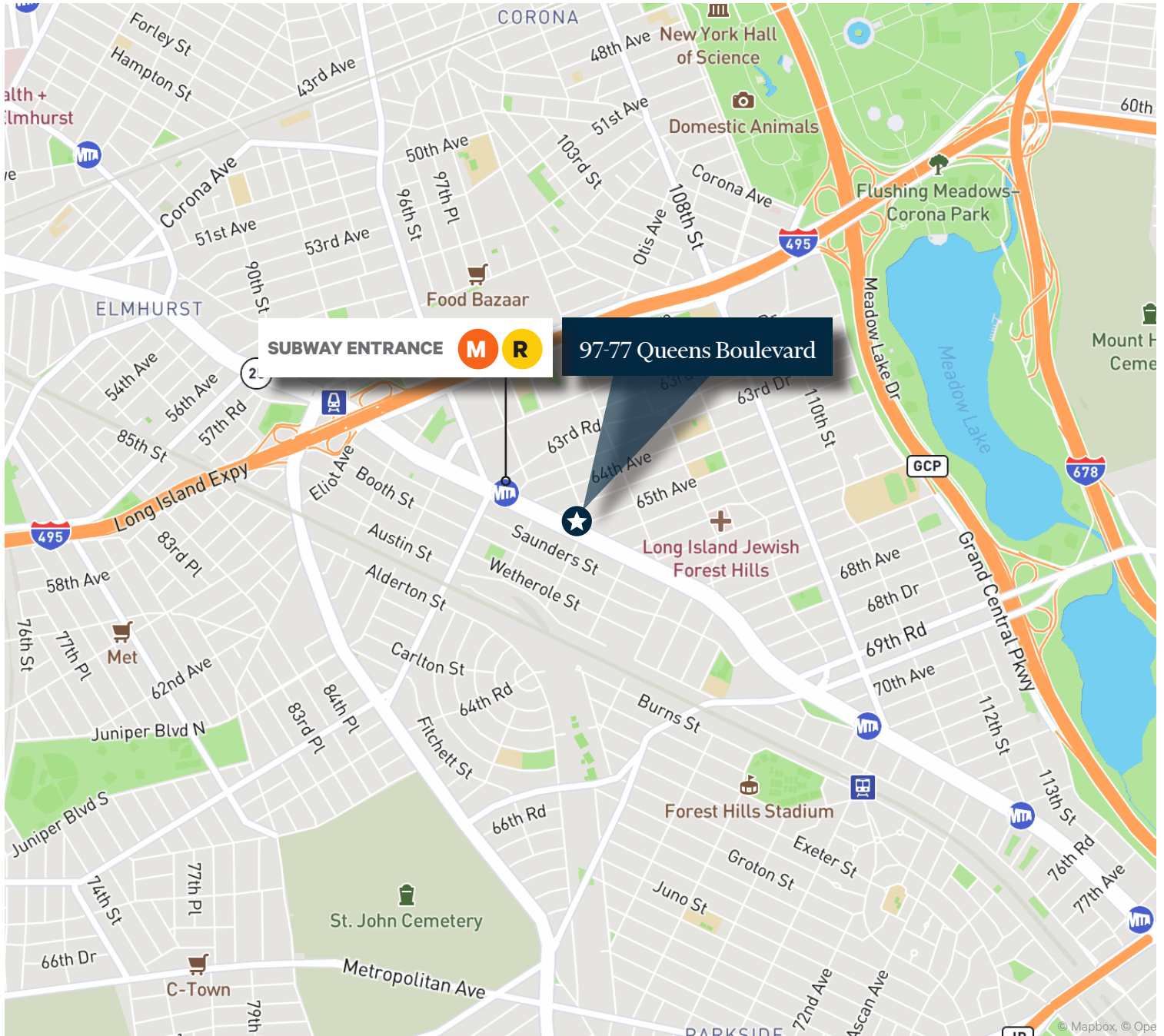
SUITE 1100 - 3,188 RSF



97-77 Queens Boulevard

Rego Park, Queens, NY

For Lease



Contact Us

Roy Chipkin

Senior Vice President
+1 631 370 6025
roy.chipkin@cbre.com

Michael Leary

LeFrak Commercial Leasing | Director
+1 718 575 4669
mleary@lefrakcommercial.com

© 2024 CBRE, Inc. All rights reserved. This information has been obtained from sources believed reliable, but has not been verified for accuracy or completeness. You should conduct a careful, independent investigation of the property and verify all information. Any reliance on this information is solely at your own risk. CBRE and the CBRE logo are service marks of CBRE, Inc. All other marks displayed on this document are the property of their respective owners, and the use of such logos does not imply any affiliation with or endorsement of CBRE. Photos herein are the property of their respective owners. Use of these images without the express written consent of the owner is prohibited.

