

652-684 Transfer Road

St. Paul, MN 55114



FOR LEASE



SH

SABER HALL
PARTNERS

DANNY MCNAMARA

952-893-8895

danny.mcnamara@cushwake.com

KEVIN ANDERSON

612-720-3266

Kevin@smallbayproperties.com

652-684 Transfer Road

St. Paul, MN 55114

BUILDING SUMMARY

PROPERTY HIGHLIGHTS

Centrally located in the Midway Business District

Abundant parking

Shared conference room

Immediate access to I-94, Hwy 280 & University Avenue

Office, warehouse & outdoor storage available

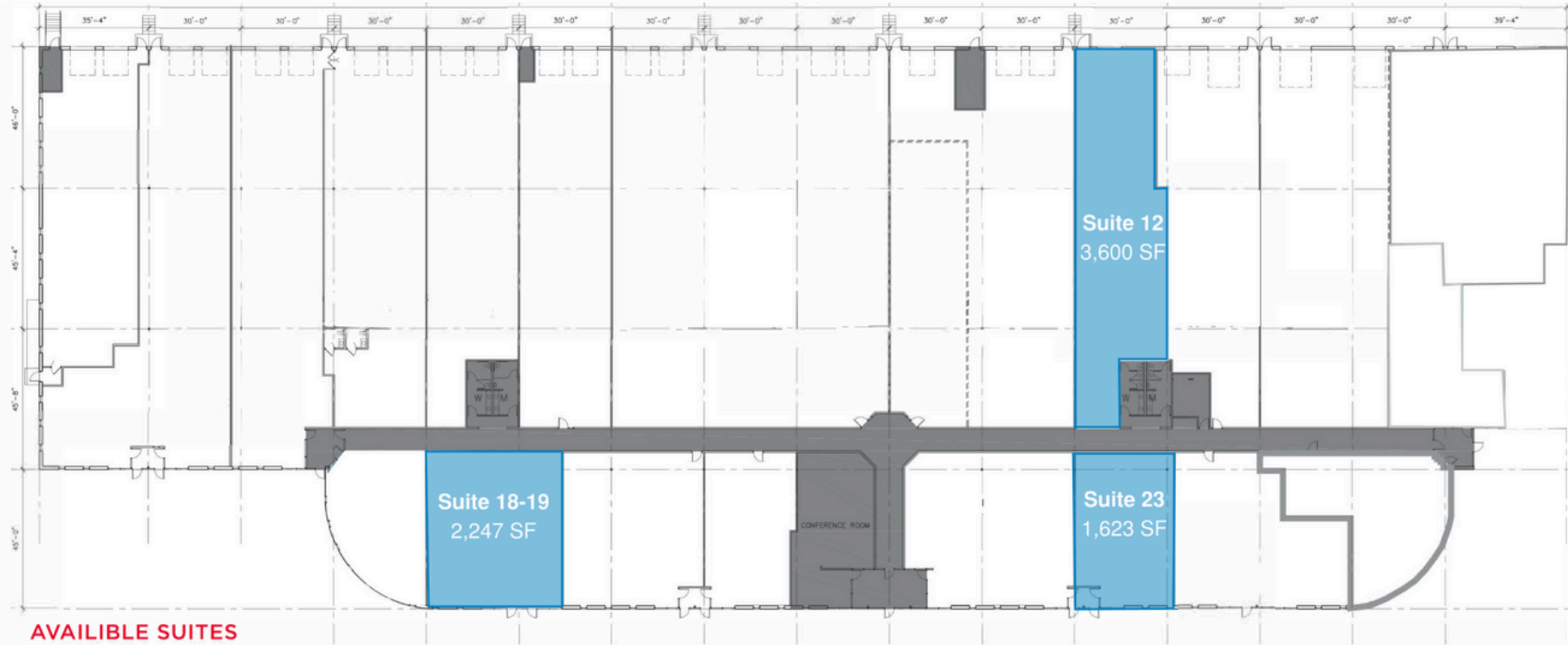


652-684 Transfer Road

St. Paul, MN 55114



AVAILABLE SUITES



Suite #	SF	Current Use	Future Use	Available	Loading
12	3,536 SF	Gym	Gym / Warehouse	Immediately	1-dock door
18-19	2,247 SF	Office	Office	Immediately	N/A
23	1,623 SF	Office	Office	30-days	N/A

652-684 Transfer Road

St. Paul, MN 55114

PROPERTY INFORMATION

Address	652-684 Transfer Road, St. Paul, MN
Building Size	78,440 SF
Total Land	5.36 Acres
Year Built	1975
Clear Height	14'
Net Rental Rate	Negotiable
2024 CAM & Tax	\$4.76/SF



SABER HALL
PARTNERS

DANNY MCNAMARA

952-893-8895

danny.mcnamara@cushwake.com

KEVIN ANDERSON

612-720-3266

Kevin@smallbayproperties.com

652-684 Transfer Road

St. Paul, MN 55114

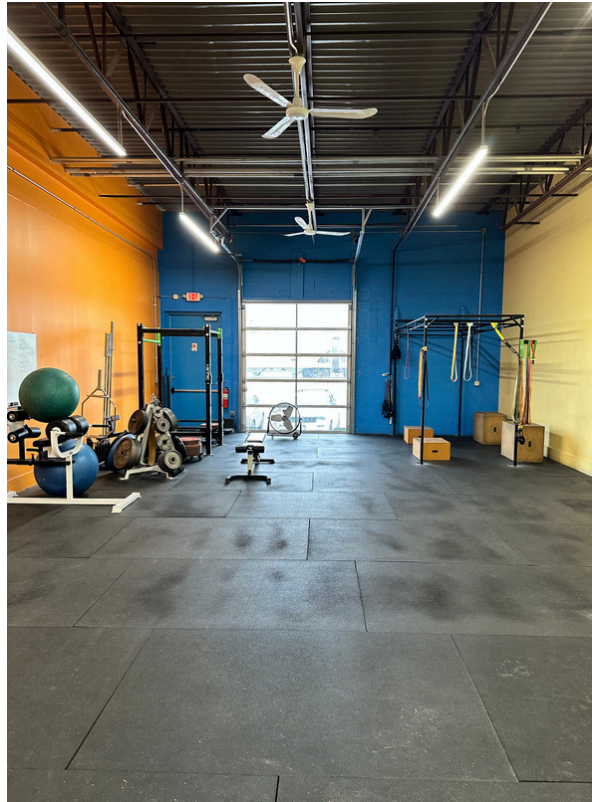
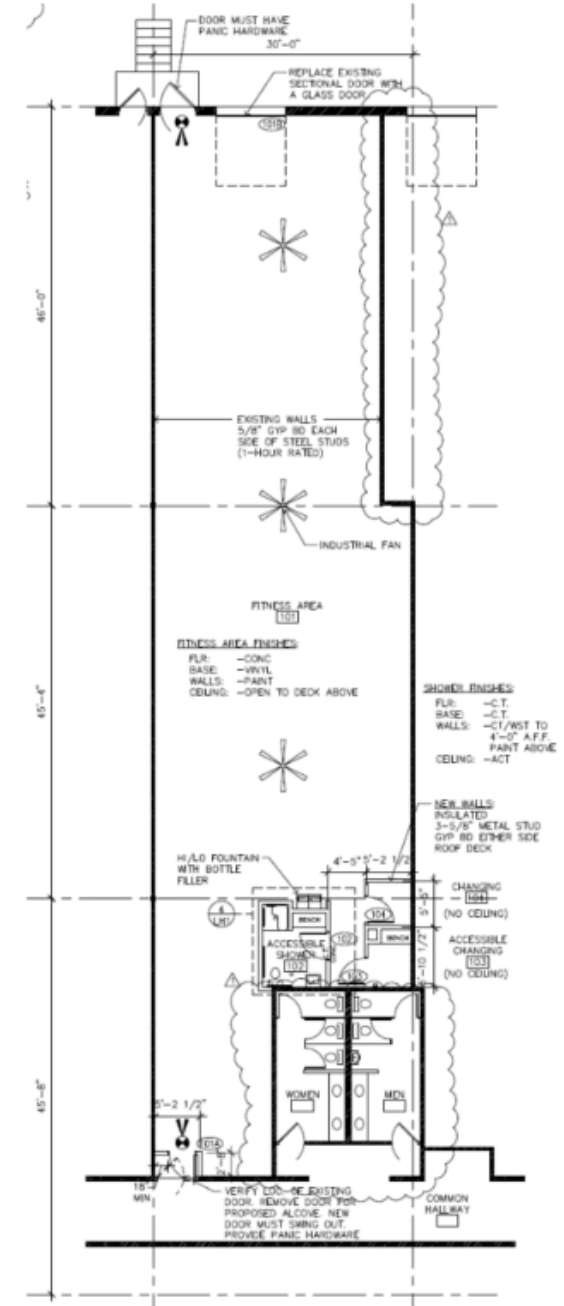
SUITE FLOOR PLAN

Suite 12

3,536 SF warehouse

1-dock door

Outdoor storage available



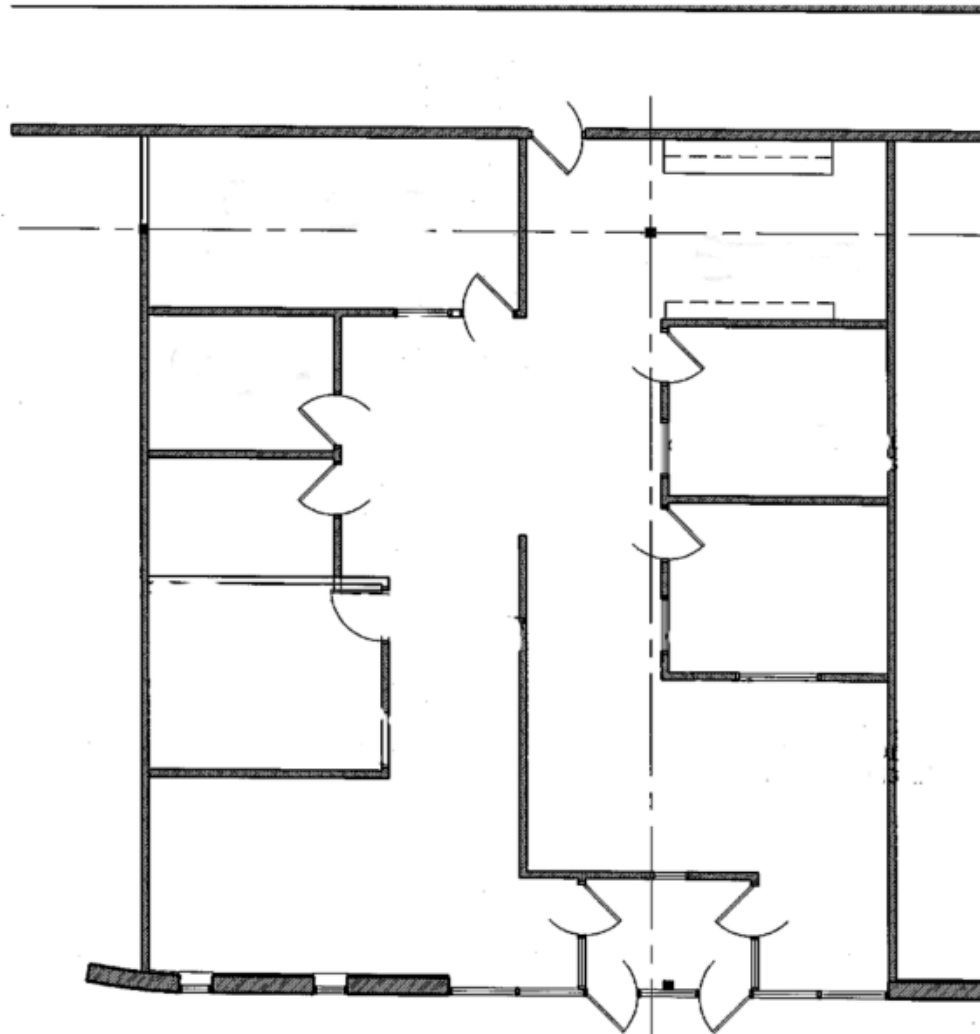
652-684 Transfer Road

St. Paul, MN 55114

SUITE FLOOR PLAN

Suite 18-19

2,247 SF office



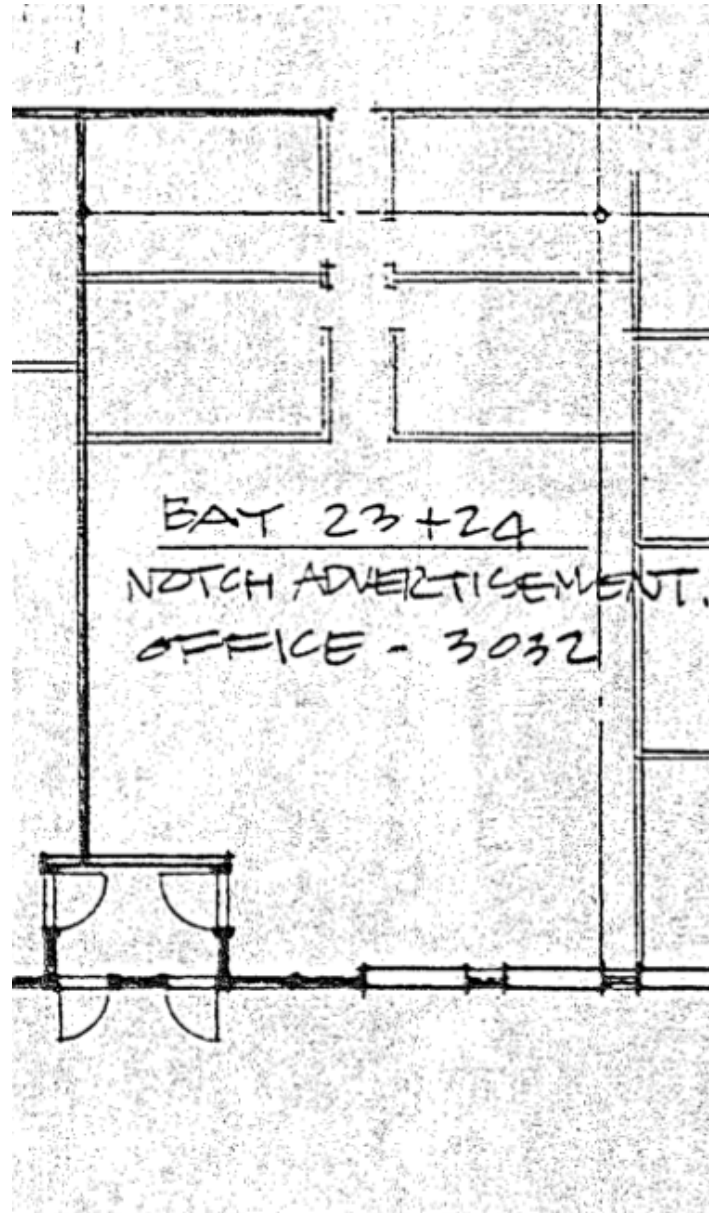
652-684 Transfer Road

St. Paul, MN 55114

SUITE FLOOR PLAN

Suite 23

1,623 SF office

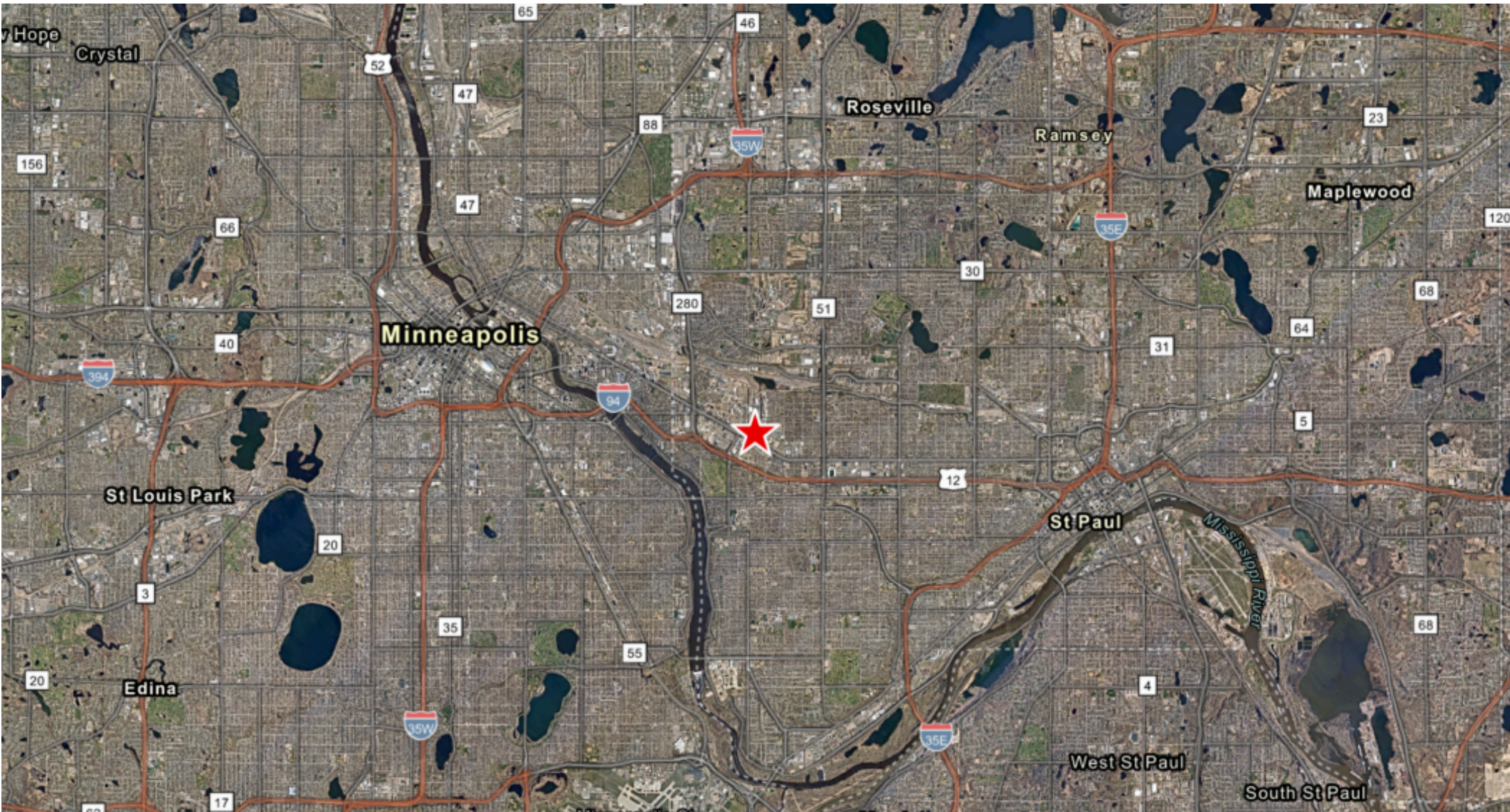


652-684 Transfer Road

St. Paul, MN 55114



MAP



SABER HALL
PARTNERS

DANNY MCNAMARA

952-893-8895

danny.mcnamara@cushwake.com

KEVIN ANDERSON

612-720-3266

Kevin@smallbayproperties.com