

1262-1342

S COUNTRY CLUB DRIVE
MESA, ARIZONA

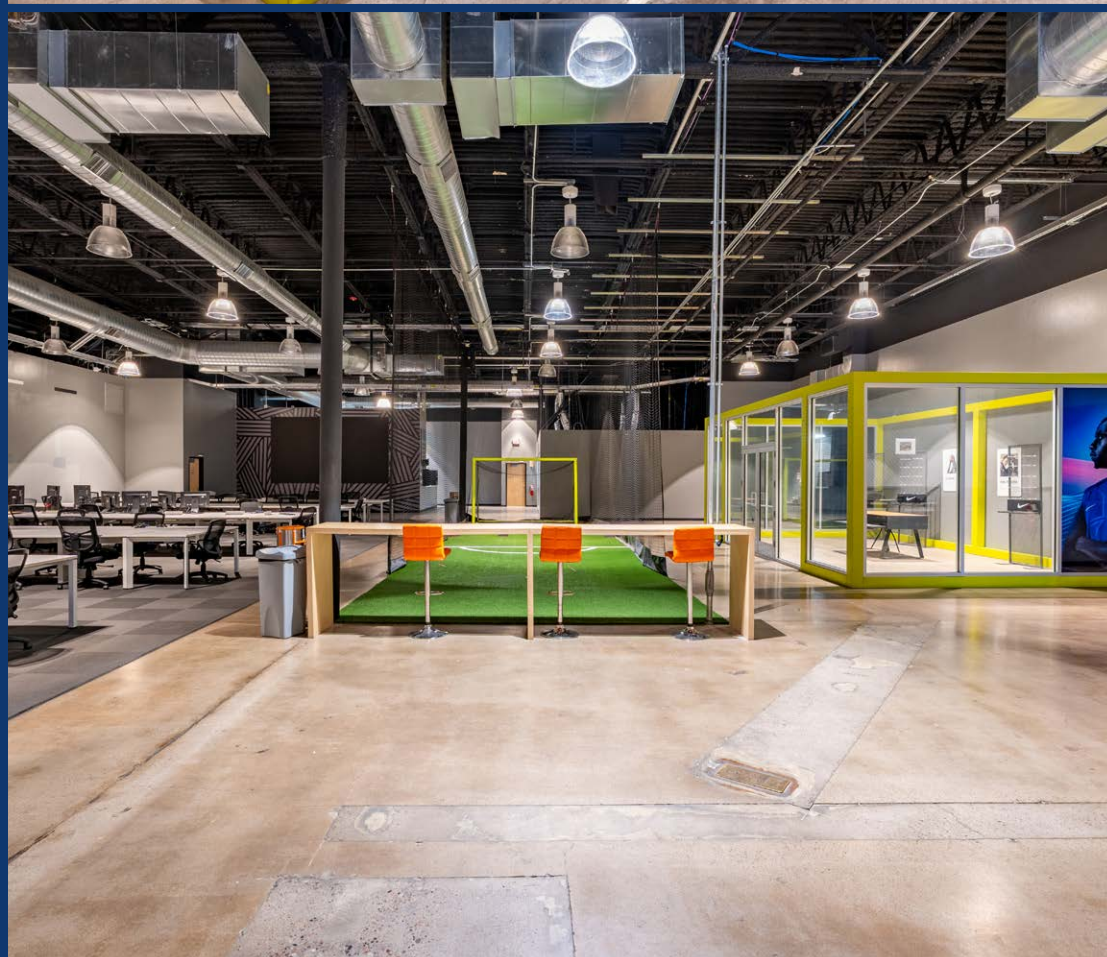
SOUTHERN SUNSET PLAZA
4,869 SF - 30,000 RSF PLUG & PLAY SUBLEASE
AVAILABLE

±30,000 SF
Sublease Available

±4,869 SF
Sublease Available

Colliers

COUNTRY CLUB DRIVE
VPD ±39,984



Multi-Use Plug & Play Sublease

SOUTHERN SUNSET PLAZA | HIGH-END,
MOVE-IN READY SUBLEASE

Southern Plaza is a highly visible, mixed use shopping center offering retail and employment opportunities. The center has access to over 94,000 employees in the adjacent Mesa Fiesta District.

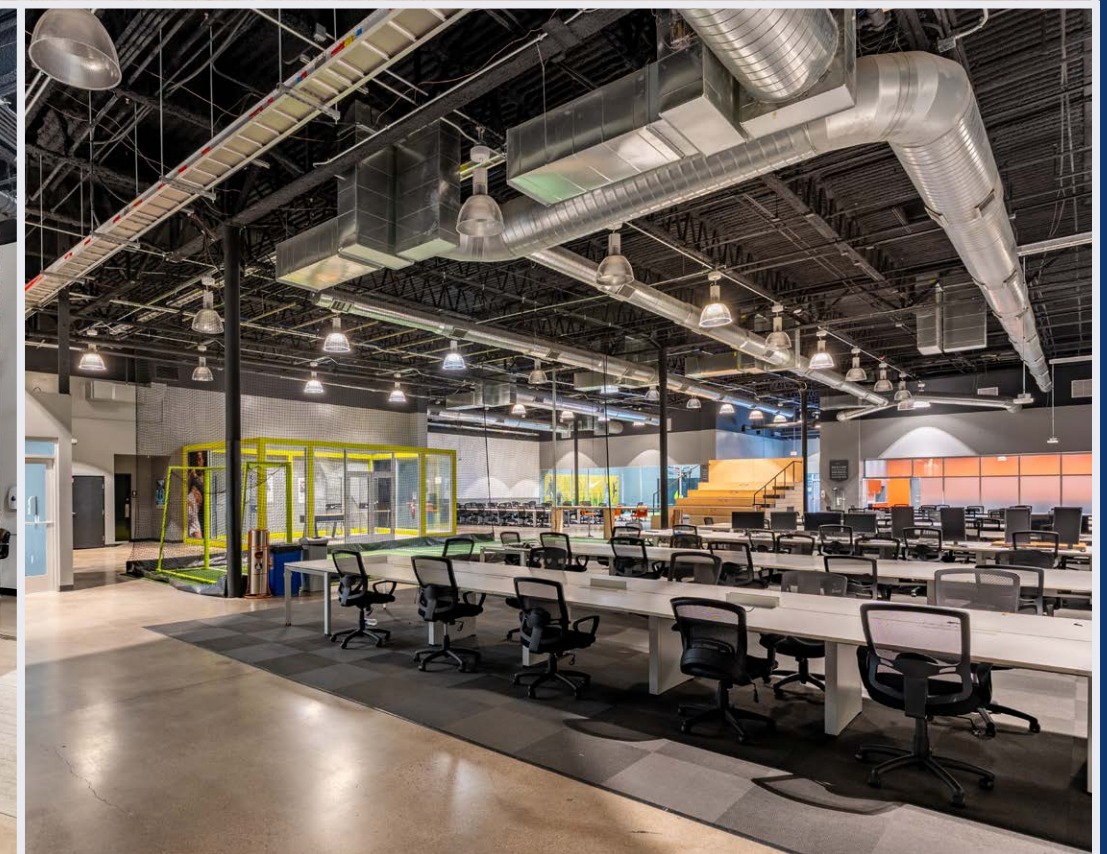
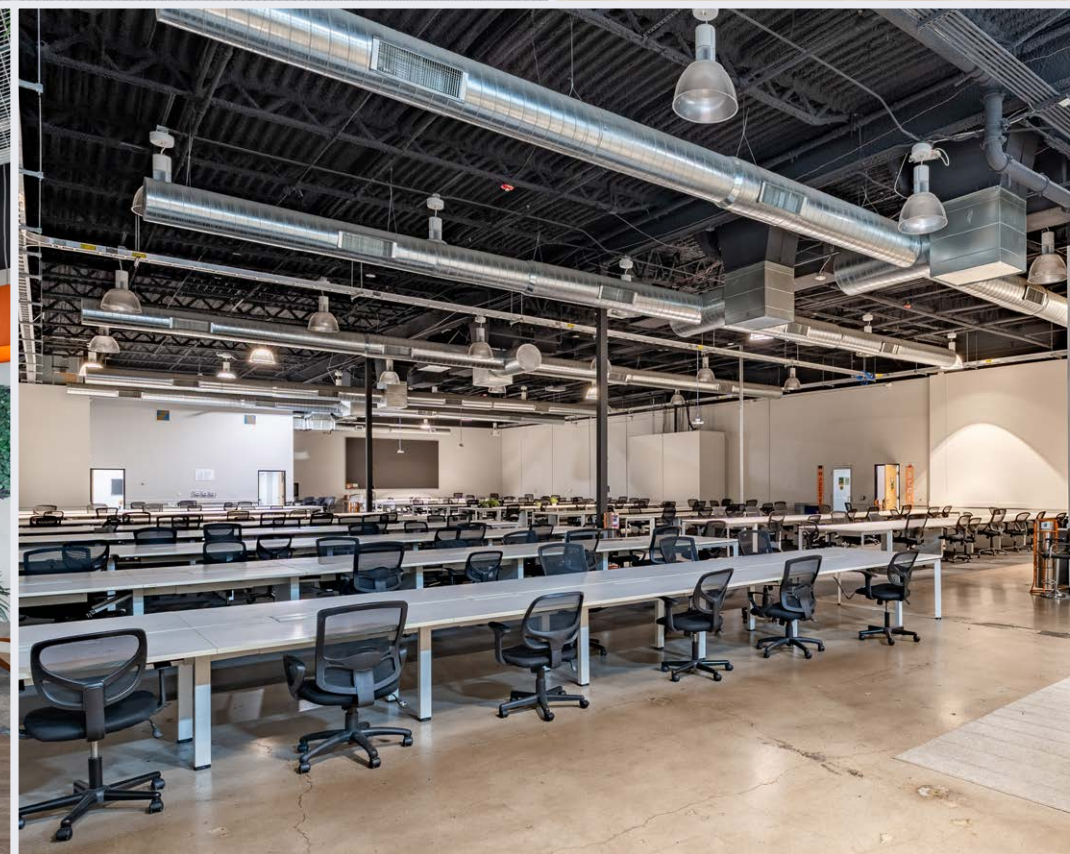
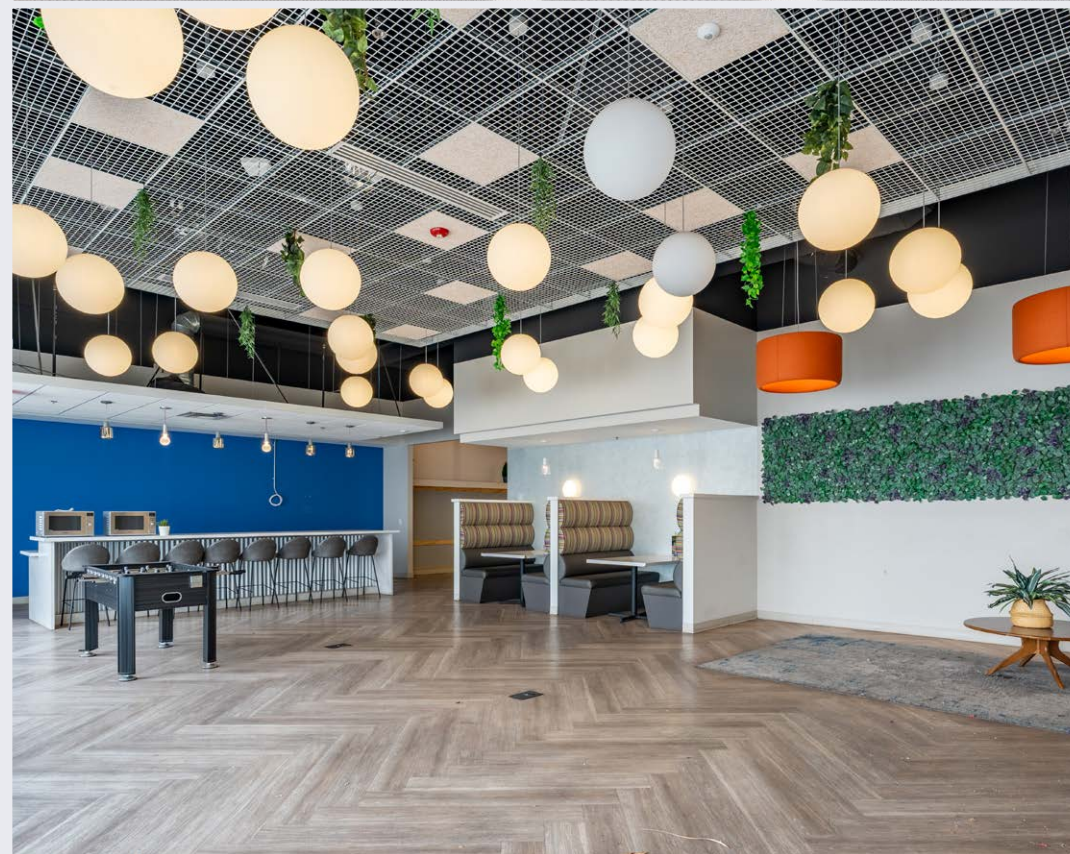
- Lease Expiration Date: 12/31/2029
- Parking Ratio 4.0/1,000 SF
- Overflow Parking Available
- Advanced Fiber Optic Infrastructure
- 24/7 Secure Card-Key Access
- On-Site Security

Suite 1300-105 Features

5,000 SF - 30,000 SF

- Plug & Play FF&E Available
- Indoor Basketball Court
- Multiple Private Offices
- Multiple Conference & Training Rooms
- Private Lockers
- Communal Break Out Space
- High End Finishes
- Open Exposed Ceilings
- Large Break Room
- Mezzanine Lounge Space
- Flexible Floor Plan Options

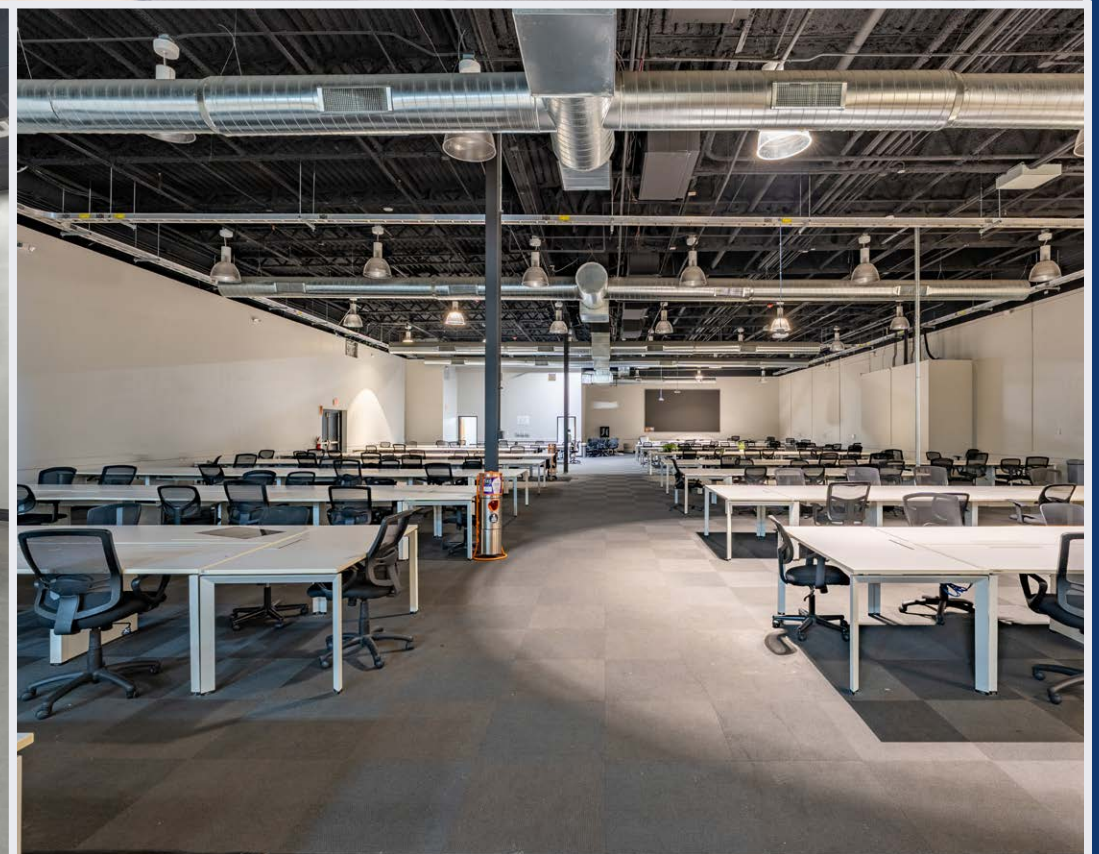
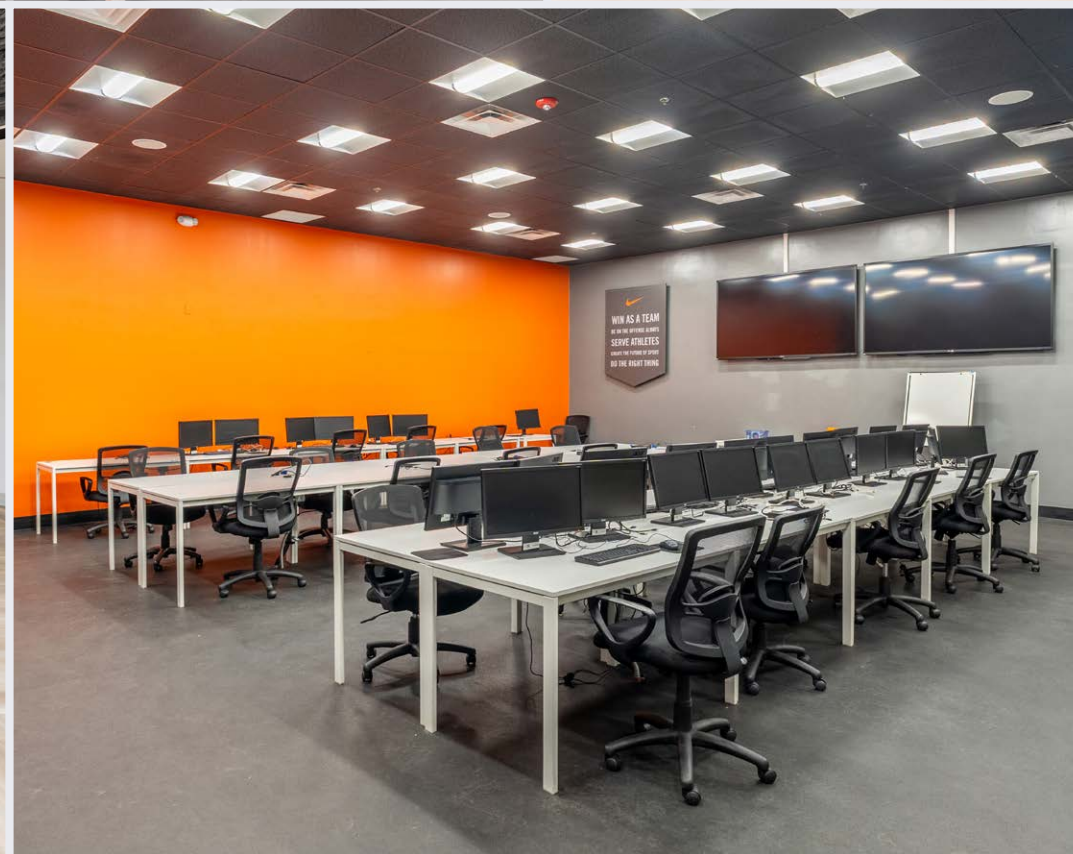
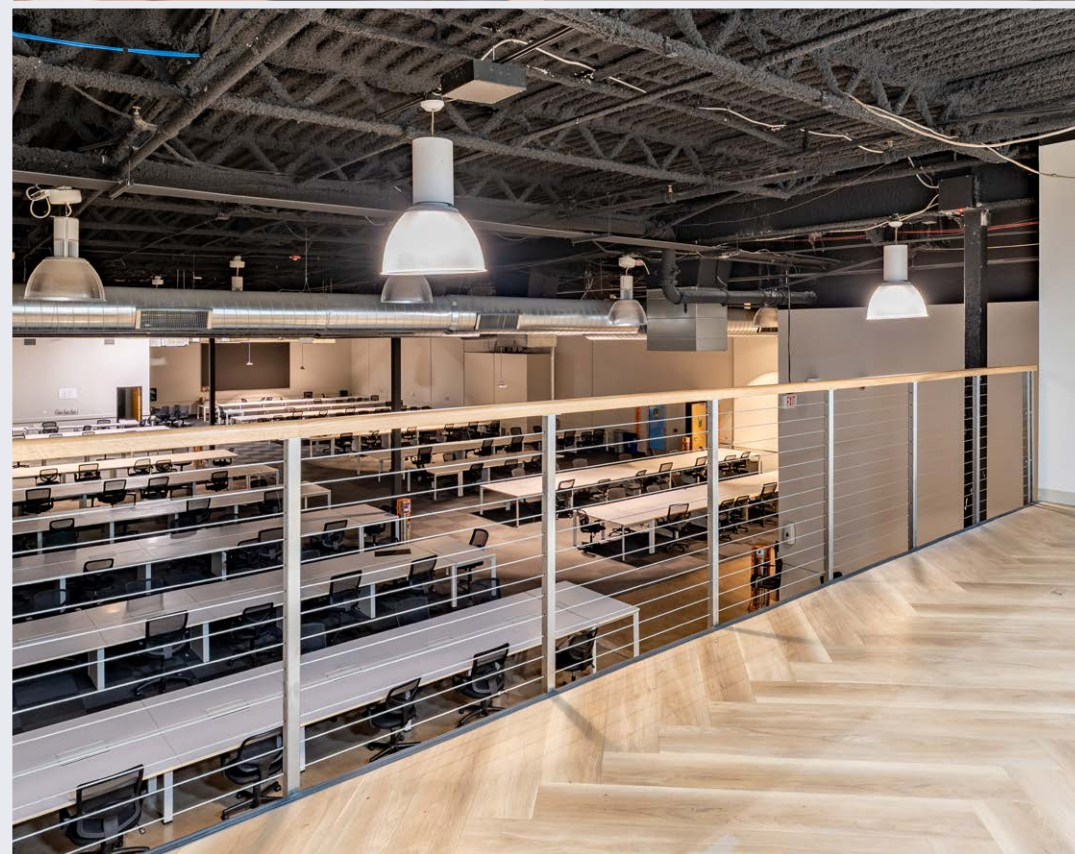
VIRTUAL TOUR



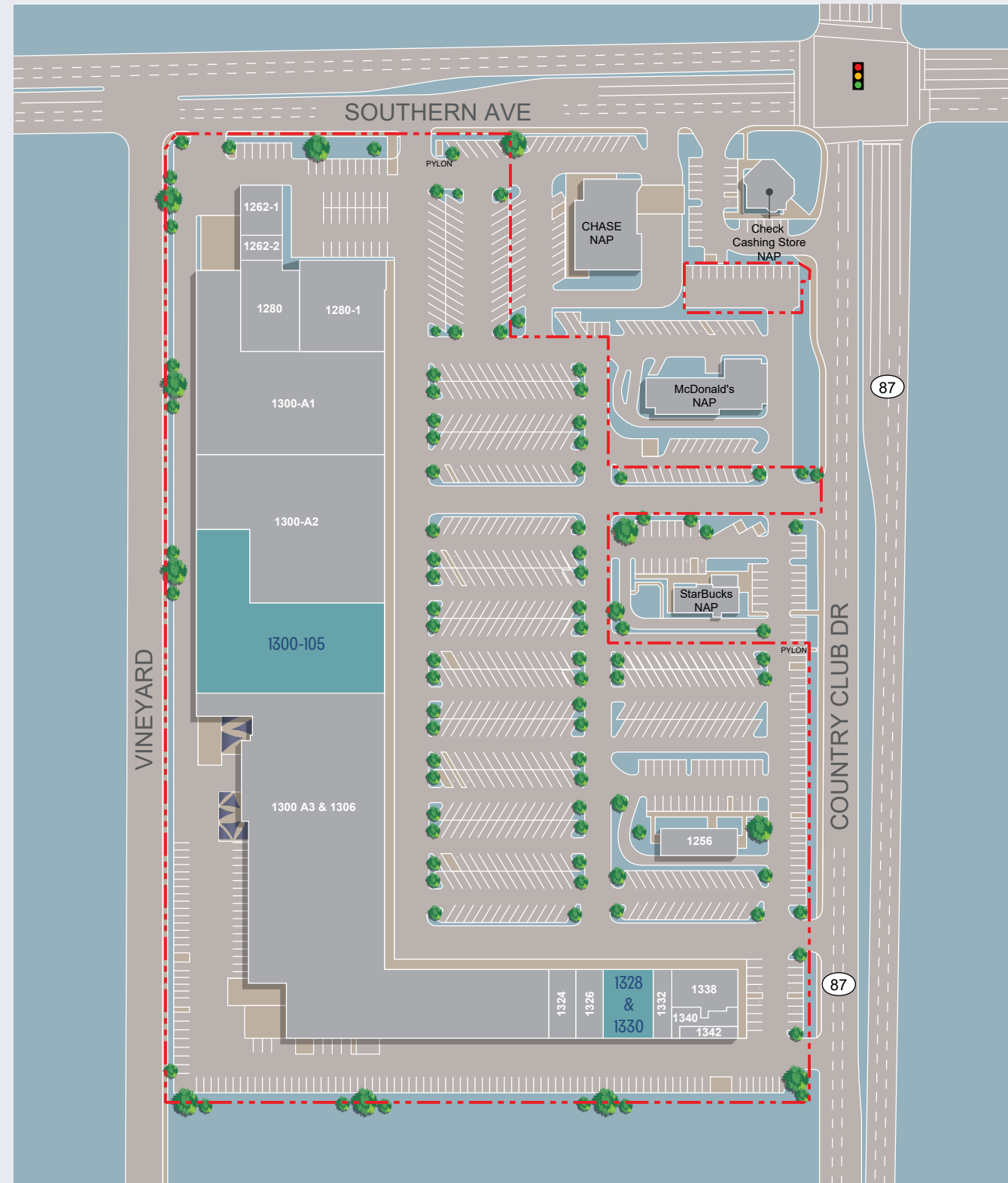
Suite 1328-1330 Features

4,869 SF

- Office or Retail Space Available
- Store Front Exposure
- Roll Up Garage Door
- Internal Restrooms



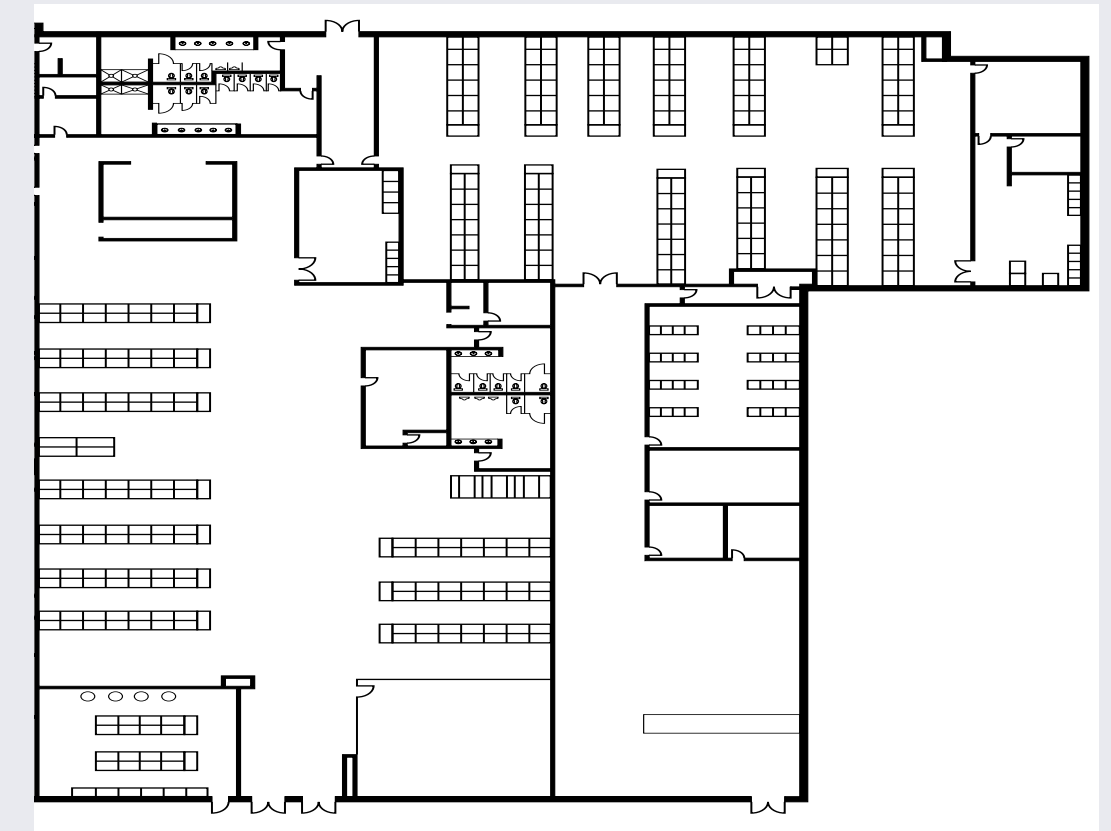
Site Plan



Floorplans

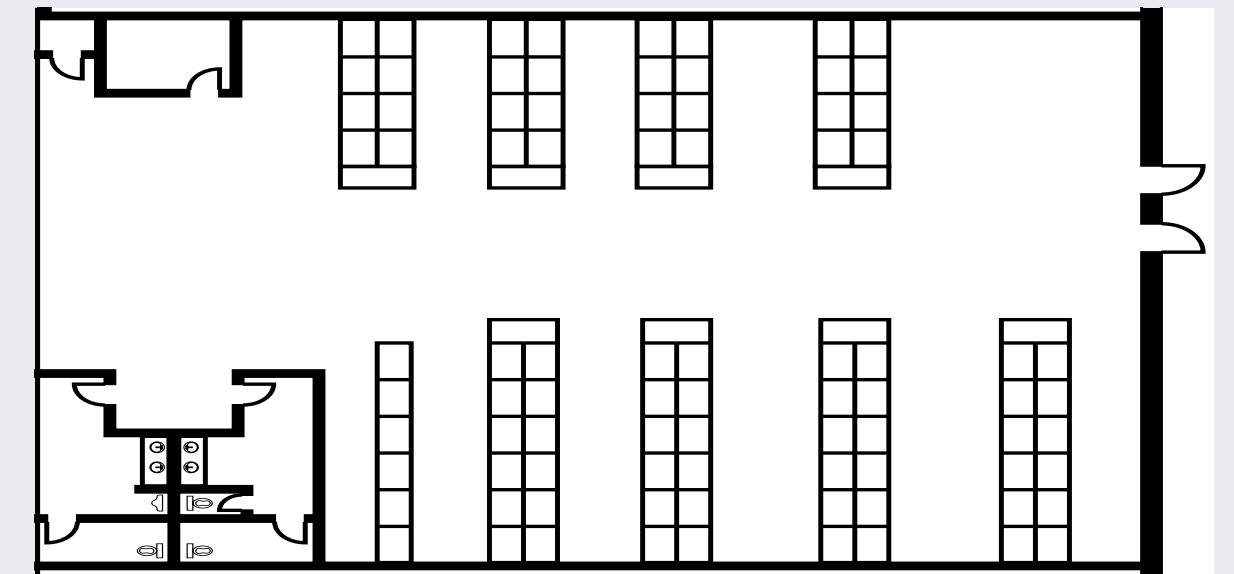
SUITE 1300-105

5,000 SF - 30,000 RSF



SUITE 1328-1330

4,869 RSF



Additional Parking

EXCLUSIVE OVERFLOW PARKING AVAILABLE



In The Heart of Everything

PRIME MESA LOCATION WITH
STRONG VISIBILITY AND ACCESS

3 MILES
to Banner Desert Medical Center, one of the
largest and most advanced hospitals in Arizona

10 MINUTES
to Mesa Community College, the largest of the
10 Maricopa Community Colleges

ONE-HALF MILE
to Superstition Freeway / US 60 Full Diamond

SOUTHERN AVE

COUNTRY CLUB DRIVE



1262-1342

S COUNTRY CLUB DRIVE
MES, ARIZONA

SOUTHERN SUNSET PLAZA
4,869 SF - 30,000 RSF PLUG & PLAY
SUBLEASE AVAILABLE

KYLE CAMPBELL
EXECUTIVE VICE PRESIDENT
+1 602 222 5062
KYLE.CAMPBELL@COLLIERS.COM

MATT BANISZEWSKI
VICE PRESIDENT
+1 602 222 5176
MATT.BANISZEWSKI@COLLIERS.COM

ANTHONY TIMPANI
SENIOR ASSOCIATE
+1 602 222 5141
ANTHONY.TIMPANI@COLLIERS.COM

Colliers

This document has been prepared by Colliers for advertising and general information only. Colliers makes no guarantees, representations or warranties of any kind, expressed or implied, regarding the information including, but not limited to, warranties of content, accuracy and reliability. Any interested party should undertake their own inquiries as to the accuracy of the information. Colliers excludes unequivocally all inferred or implied terms, conditions and warranties arising out of this document and excludes all liability for loss and damages arising there from. This publication is the copyrighted property of Colliers and /or its licensor(s). © 2026. All rights reserved. This communication is not intended to cause or induce breach of an existing listing agreement.