

# Industrial Building For Lease

1780 Buckner Tarsney Road  
Grain Valley, Missouri



**Ben Boyd**

Vice President  
+1 816 556 1161  
ben.boyd@colliers.com

**John Stafford** sior

Vice Chair  
+1 816 556 1184  
john.stafford@colliers.com



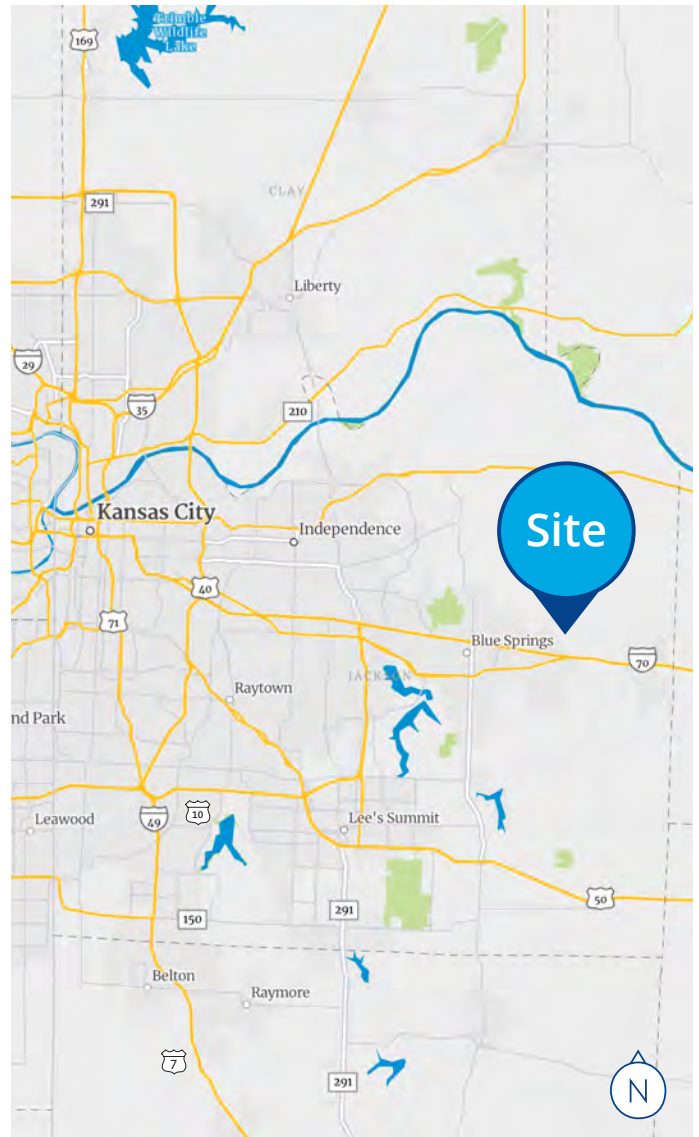
Accelerating success.

# Available For Lease

1780 Buckner Tarsney Road

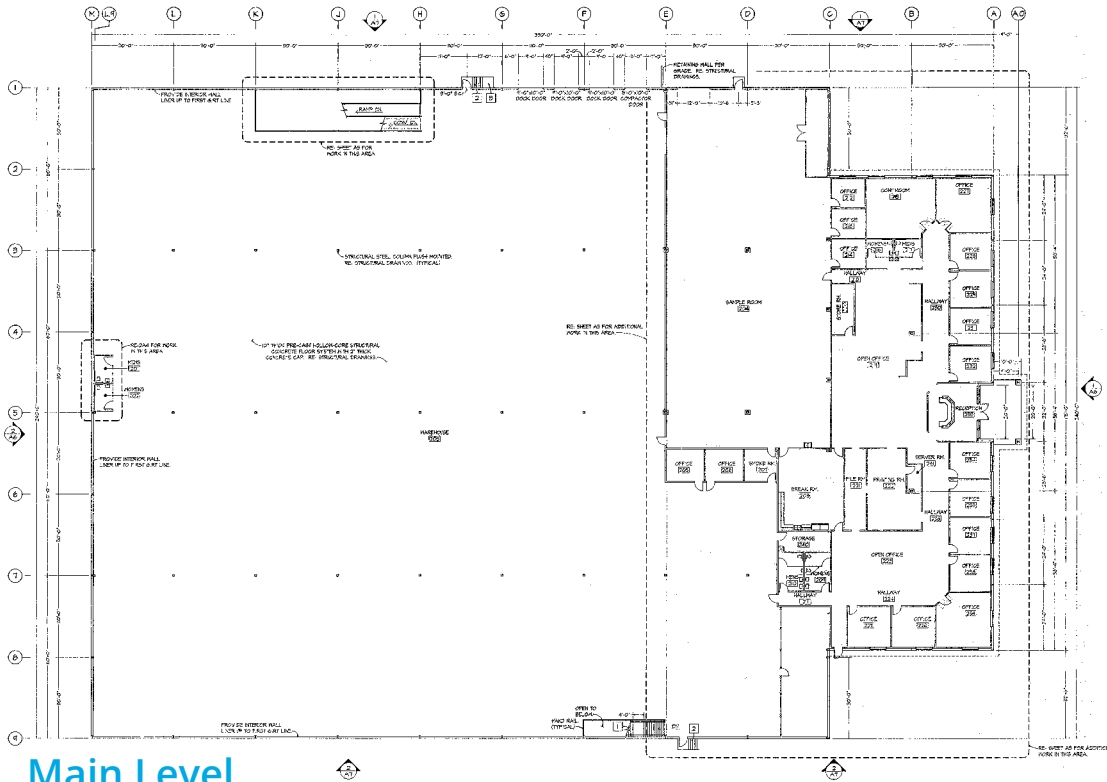
## Property Features

<b>Building Size:</b>	125,000 SF
<b>Office Area:</b>	12,000 SF
<b>Warehouse Area:</b>	112,500 SF (two-story)
<b>Loading Doors:</b>	7 dock-high; 1 drive-in
<b>Clear Height:</b>	11'-14'
<b>Power:</b>	800 amp; 480v; 3-phase
<b>Sprinkler:</b>	Wet
<b>Lease Rate:</b>	\$4.75 PSF, net <ul style="list-style-type: none"><li>• Taxes: est. \$1.02 PSF</li><li>• Insurance: est. \$0.20 PSF</li></ul>

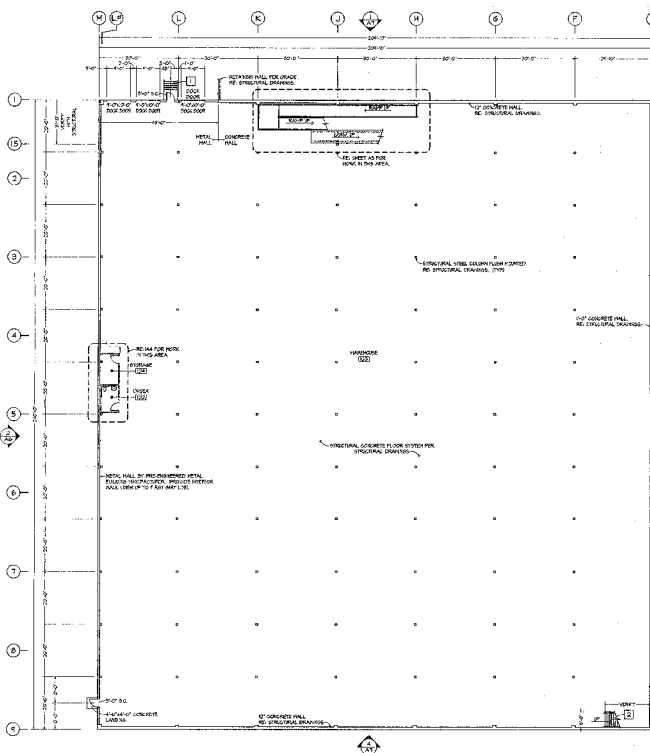


# Floor Plan

1780 Buckner Tarsney Road



Main Level



Lower Level

# 1780 Buckner Tarsney Road



## Ben Boyd

Vice President  
+1 816 556 1161  
ben.boyd@colliers.com

## John Stafford SIOR

Vice Chair  
+1 816 556 1184  
john.stafford@colliers.com

## Colliers Kansas City

4520 Main Street, Suite 1000  
Kansas City, MO 64111  
+1 816 531 5303  
colliers.com/kansascity

