

# FOR LEASE

2941 W 19TH AVE, DENVER, CO 80204



## PROPERTY HIGHLIGHTS

**4 PRIVATE OFFICES & 1 CONFERENCE ROOM**

....

**MODERN, UPDATED, OPEN CONCEPT WORKSPACE**

....

**FULLY FURNISHED WITH COLLABORATIVE WORKSTATIONS**

....

**ABUNDANT PARKING AND LOCATION DIRECTLY NEXT TO  
EMPOWER FIELD**

....

**FULLY EQUIPPED KITCHEN WITH BEER TAPS**

....

**ADVANCED SERVER ROOM**

....

**SOLAR PANELS AND LOW UTILITY COSTS**

....

**HEAVY POWER - 400 AMPS, CENTURY LINK FIBER**

## PROPERTY OVERVIEW

LEASE RATE \$12,500/Month

PARKING 38 Spaces

BUILDING TYPE Office

YEAR BUILT 1965

BUILDING SIZE 5,964 SF

TOTAL LOT AREA 15,246 SF (.35 AC)

**PETER SENGLMANN**

*VICE PRESIDENT*

T: 303.962.9552

PSENGLMANN@PINNACLERA.COM

**HAYLEY KONOWALCHUK**

*ASSOCIATE ADVISOR*

T: 619.742.5525

HKONOWALCHUK@PINNACLERA.COM



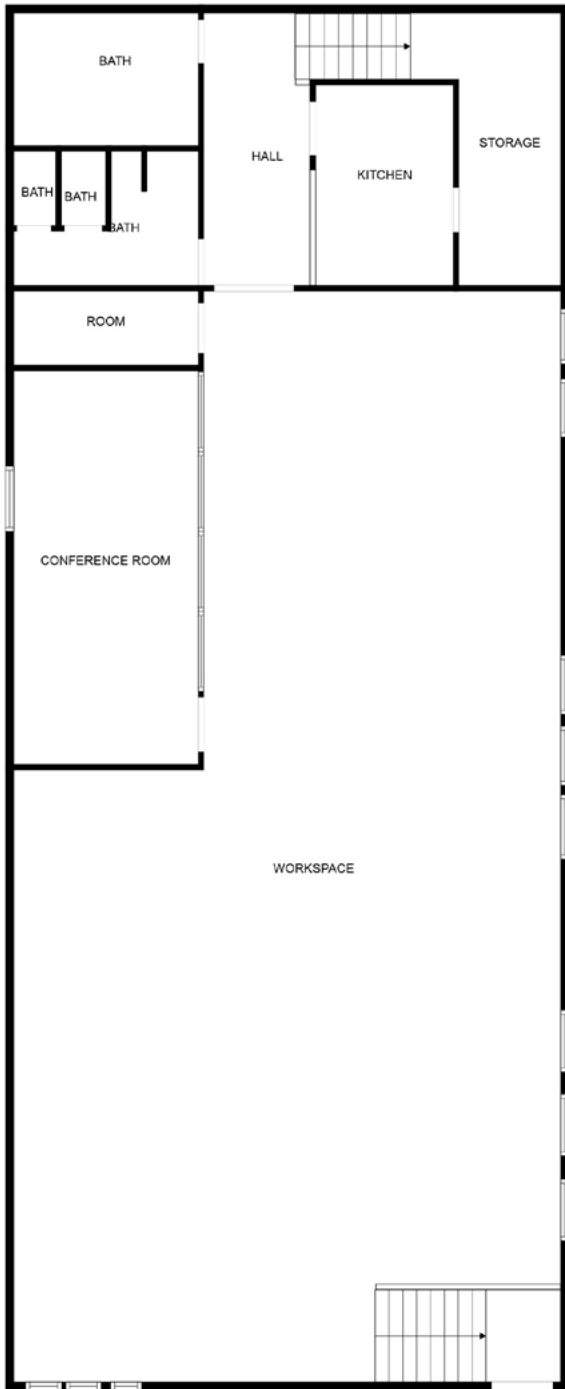
**PETER SENGLMANN**  
 VICE PRESIDENT  
 T: 303.962.9552  
 PSENGELMANN@PINNACLERA.COM

**HAYLEY KONOWALCHUK**  
 ASSOCIATE ADVISOR  
 T: 619.742.5525  
 HKONOWALCHUK@PINNACLERA.COM

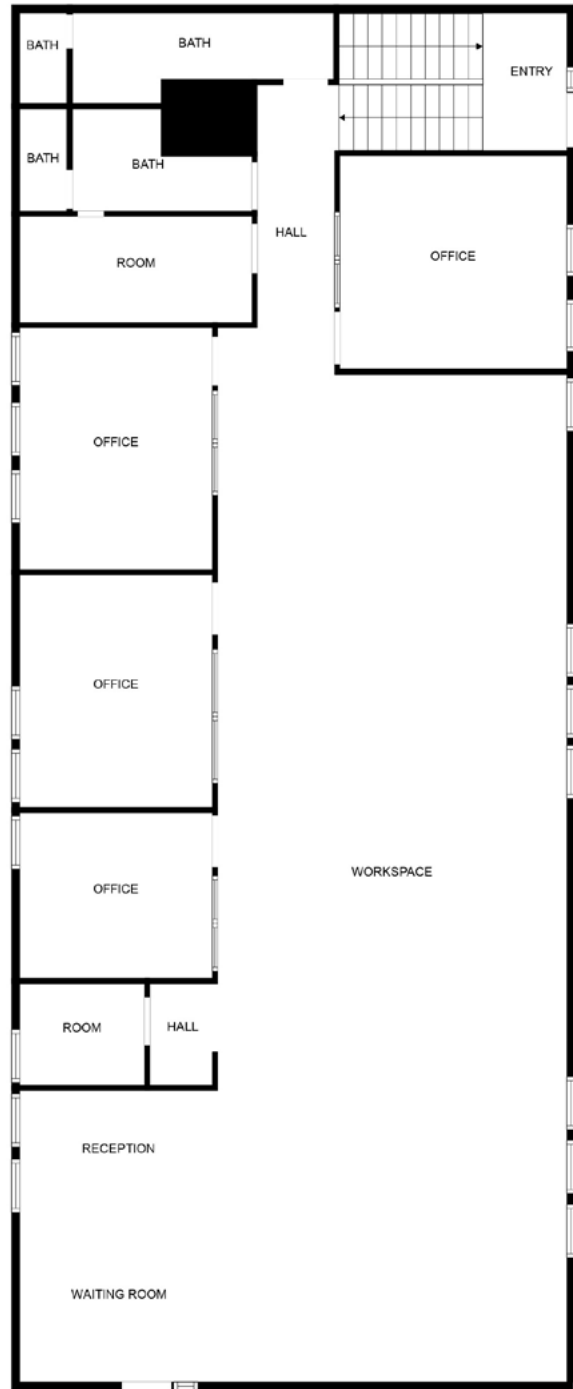
One Broadway Suite A300 | Denver, CO 80203 | T: 303.962.9555 | www.PinnacleREA.com



# FLOOR PLAN



FLOOR 1



FLOOR 2

**PETER SENGLMANN**

*VICE PRESIDENT*

T: 303.962.9552

PSENGLMANN@PINNACLEAREA.COM

**HAYLEY KONOWALCHUK**

*ASSOCIATE ADVISOR*

T: 619.742.5525

HKONOWALCHUK@PINNACLEAREA.COM



**2941 W 19TH AVE**

**FEDERAL BLVD**

**WEST COLFAX AVE**



**PETER SENGLMANN**

*VICE PRESIDENT*

T: 303.962.9552

PSENGLMANN@PINNACLERA.COM

**HAYLEY KONOWALCHUK**

*ASSOCIATE ADVISOR*

T: 619.742.5525

HKONOWALCHUK@PINNACLERA.COM

One Broadway Suite A300 | Denver, CO 80203 | T: 303.962.9555 | [www.PinnacleREA.com](http://www.PinnacleREA.com)

