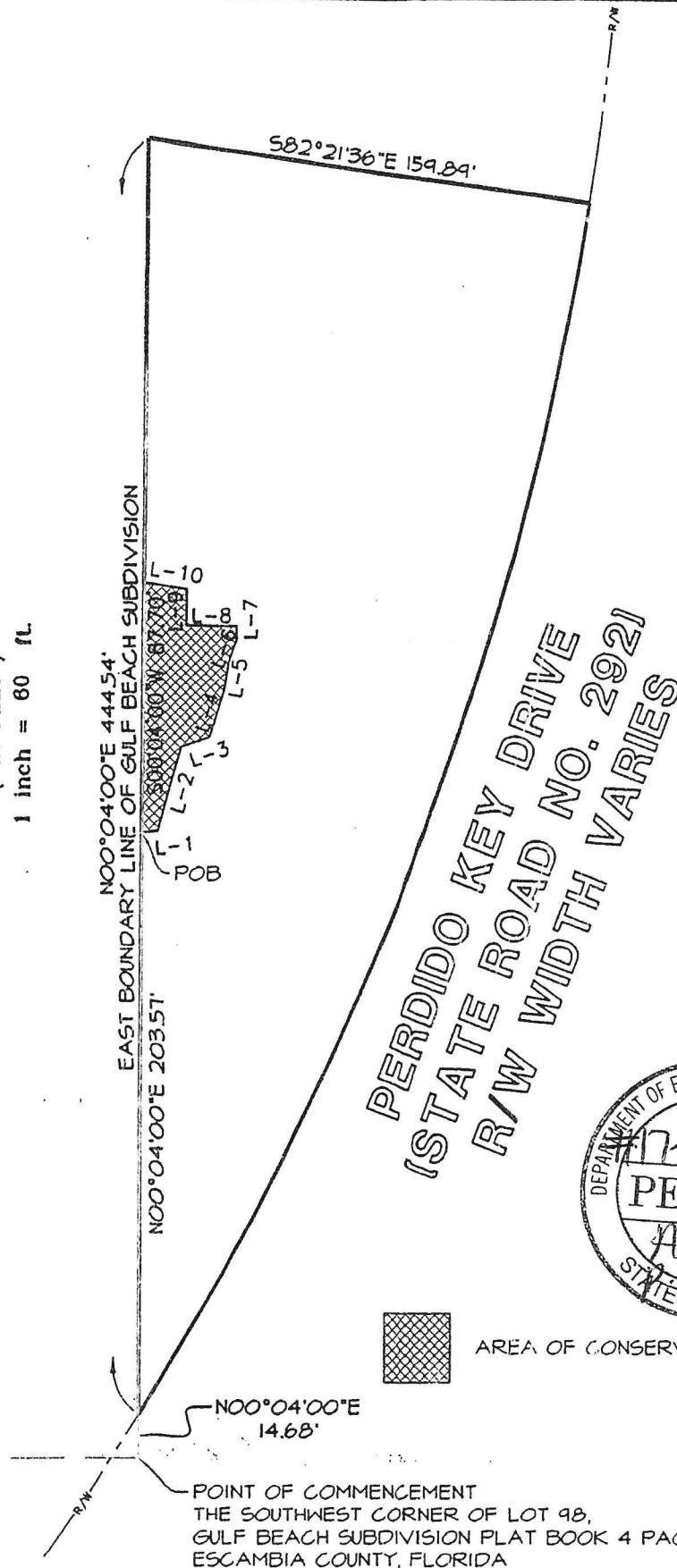


LINE TABLE		
LINE	LENGTH	BEARING
L-1	5.54'	N84°03'34"
L-2	30.20'	N15°45'36"E
L-3	10.44'	N70°47'54"E
L-4	17.04'	N16°41'29"E
L-5	10.40'	N08°49'15"E
L-6	10.54'	N20°37'17"E
L-7	10.00'	N00°04'00"E
L-8	10.00'	N89°56'00"W
L-9	12.80'	N00°04'00"E
L-10	5.18'	N01°36'16"E

SCALE: 1" = 60'



NORTHWEST FLORIDA LAND SURVEYING, INC.
A PROFESSIONAL SERVICE ORGANIZATION

SHEET 1 OF 2
7142 BELGIUM CIRCLE
Pensacola, FL 32526
(850) 432-1052

DESCRIPTION AS PREPARED BY NORTHWEST FLORIDA LAND SURVEYING, INC.

CONSERVATION EASEMENT CREATED AT THE CLIENT'S REQUEST

DESCRIBED AS FOLLOWS:

COMMENCE AT THE SOUTHWEST CORNER OF LOT 98, GULF BEACH SUBDIVISION AS ACCORDING TO THE PLAT FILED IN PLAT BOOK 4 AT PAGE 52 OF THE PUBLIC RECORDS OF ESCAMBIA COUNTY, FLORIDA, THENCE GO NORTH 00 DEGREES 40 MINUTES 00 SECONDS EAST ALONG THE EAST LINE OF SAID GULF BEACH SUBDIVISION FOR A DISTANCE OF 14.68 FEET TO A POINT OF INTERSECTION WITH THE WESTERLY CURVED RIGHT OF WAY OF PERDIDO KEY DRIVE (STATE ROAD NO. 292) R/W WIDTH VARIES; THENCE CONTINUE NORTH 00 DEGREES 04 MINUTES 00 SECONDS EAST ALONG SAID EAST LINE OF GULF BEACH SUBDIVISION FOR A DISTANCE OF 203.57 FEET TO THE POINT OF BEGINNING, THENCE DEPARTING SAID EAST LINE OF GULF BEACH SUBDIVISION GO NORTH 84 DEGREES 03 MINUTES 54 SECONDS EAST FOR A DISTANCE OF 5.54 FEET; THENCE GO NORTH 15 DEGREES 45 MINUTES 56 SECONDS EAST FOR A DISTANCE OF 30.20 FEET; THENCE GO NORTH 70 DEGREES 47 MINUTES 54 SECONDS EAST FOR A DISTANCE OF 10.44 FEET; THENCE GO NORTH 16 DEGREES 41 MINUTES 29 SECONDS EAST FOR A DISTANCE OF 17.04 FEET; THENCE GO NORTH 08 DEGREES 49 MINUTES 15 SECONDS EAST FOR A DISTANCE OF 10.40 FEET; THENCE GO NORTH 20 DEGREES 37 MINUTES 17 SECONDS EAST FOR A DISTANCE OF 8.54 FEET; THENCE GO NORTH 00 DEGREES 04 MINUTES 00 SECONDS EAST FOR A DISTANCE OF 5.00 FEET; THENCE GO NORTH 89 DEGREES 56 MINUTES 00 SECONDS WEST FOR A DISTANCE OF 18.00 FEET; THENCE GO NORTH 00 DEGREES 04 MINUTES 00 SECONDS EAST FOR A DISTANCE OF 12.80 FEET; THENCE GO NORTH 81 DEGREES 36 MINUTES 16 SECONDS WEST FOR A DISTANCE OF 15.16 FEET TO A POINT ON THE AFORESAID EAST LINE OF GULF BEACH SUBDIVISION; THENCE GO SOUTH 00 DEGREES 04 MINUTES 00 SECONDS WEST ALONG SAID EAST LINE OF GULF BEACH SUBDIVISION FOR A DISTANCE OF 87.10 FEET TO THE POINT OF BEGINNING. THE ABOVE DESCRIBED PARCEL OF LAND IS SITUATED IN A PORTION OF SECTION 36, TOWNSHIP 3 SOUTH, RANGE 32 WEST, ESCAMBIA COUNTY, FLORIDA AND CONTAINS 0.04 ACRES MORE OR LESS.



NORTHWEST FLORIDA LAND SURVEYING, INC.
7142 BELGIUM CIRCLE, PENSACOLA, FLORIDA 32526

Fred R. Thompson 4-3-09
FRED R. THOMPSON, PROFESSIONAL LAND SURVEYOR
REGISTRATION NUMBER 3027 CORP. NUMBER 7277
STATE OF FLORIDA

SCALE: 1" = 60'



NORTHWEST FLORIDA LAND SURVEYING, INC.
A PROFESSIONAL SERVICE ORGANIZATION

SHEET 2 OF 2
7142 BELGIUM CIRCLE
Pensacola, FL 32526
(850) 432-1052