



**1111**  
BROADWAY

## THE EAST BAY'S PREMIER OFFICE TOWER

NOW OPEN AT 1111 BROADWAY  
**BOCANOVA & HIGHWIRE**  
RESTAURANT COFFEE



[CLICK HERE](#)  
FOR VIRTUAL TOUR





# PROPERTY GALLERY

**1111**  
BROADWAY





PROPERTY  
**GALLERY**

**1111**  
BROADWAY

**HIGHWIRE**  
COFFEE ROASTERS



**BOCANOVA**





# PROPERTY LOCATION



1111 Broadway is directly on top of the 12th Street City Center BART station

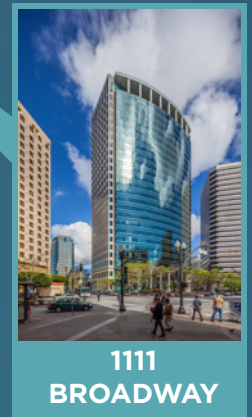
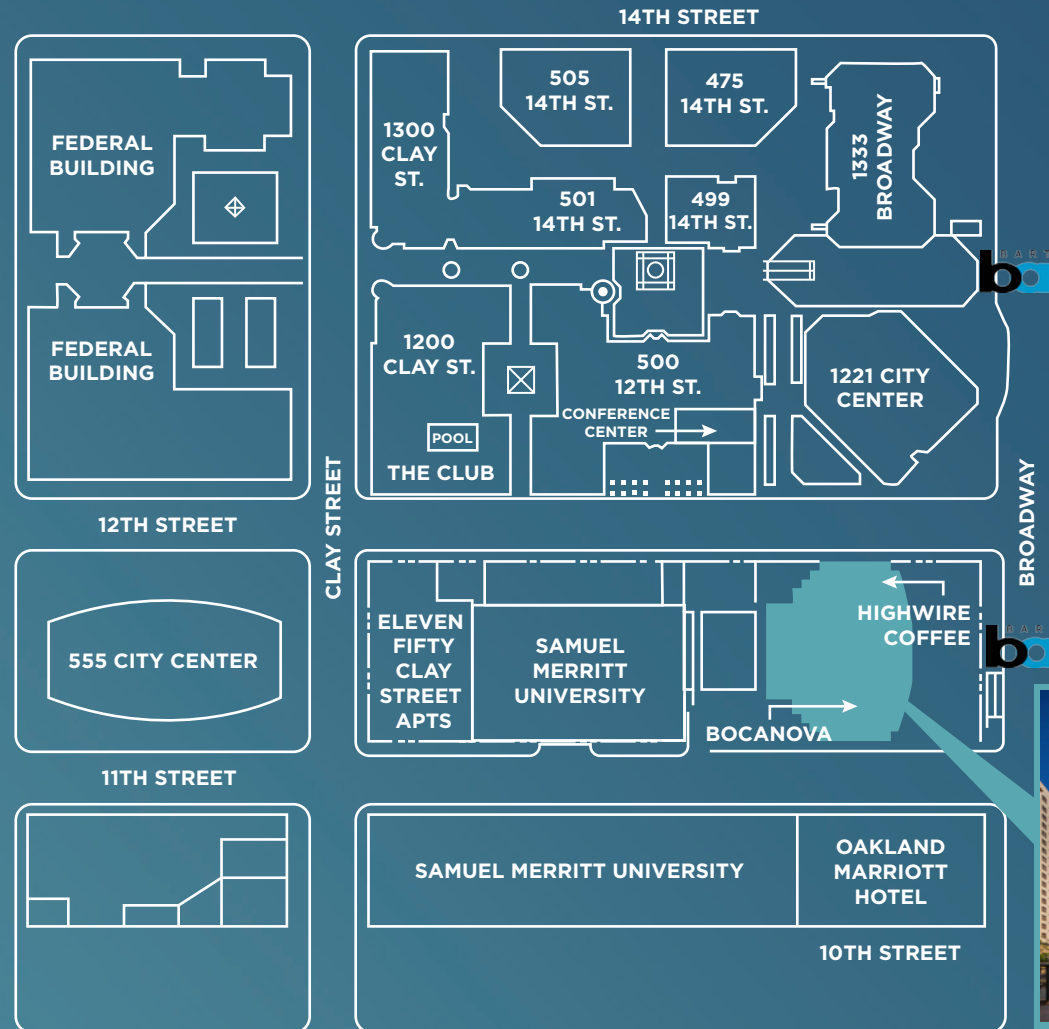


This Class A asset holds a LEED® Gold certification and its expansive, column-free design can accommodate a broad range of space configurations



The views in the Building are nothing short of breathtaking!

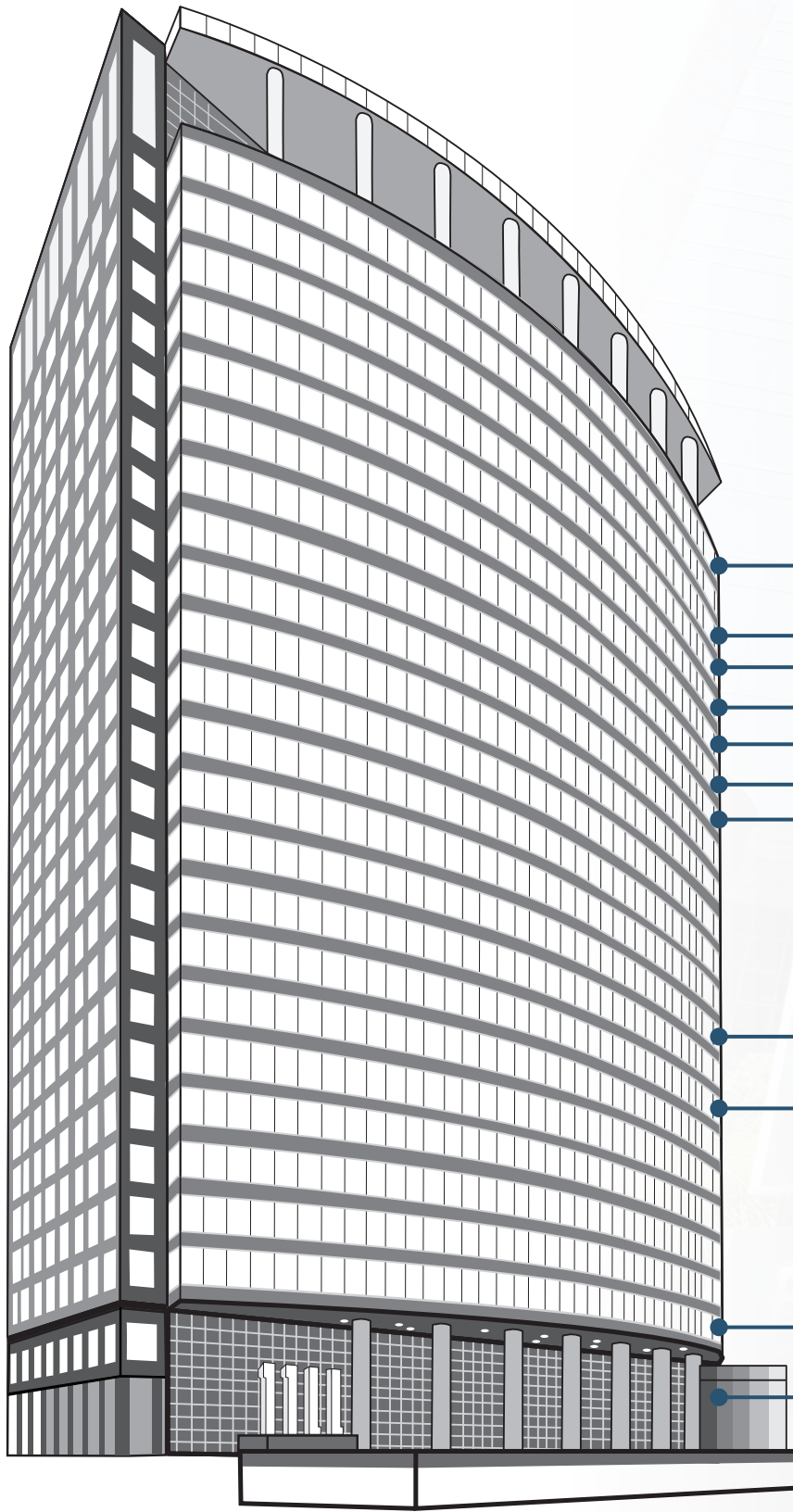
**1111**  
BROADWAY





# CURRENT AVAILABILITIES

**1111**  
BROADWAY



**Suite 2300** - 24,410 RSF - Available Now

**Suite 2040** - 2,040 RSF - Available Now

**Suite 2000** - 10,163 RSF - Available Now

360°

360°

**Suite 1980** - 10,590 RSF - Available Now

360°

**Suite 1900** - 8,194 RSF - Available Now

360°

**Suite 1800** - 13,583 RSF - Available Now

360°

**Suite 1700** - 24,480 RSF - Available Now

**Suite 1600** - 9,699 RSF - Available Now

360°

**Suite 1630** - 6,328 RSF - Available Now

**Suite 1500** - 10,717 RSF\* - Available Now

**Suite 1501** - 1,766 RSF\* - Available Now

*\*Can be combined to create 12,483 RSF*

360°

**Suite 1515** - 1,589 RSF - Available Now

360°

**Suite 900** - 24,141 RSF - Available Now

**Suite 700** - 24,245 RSF - 05/01/2026

360°

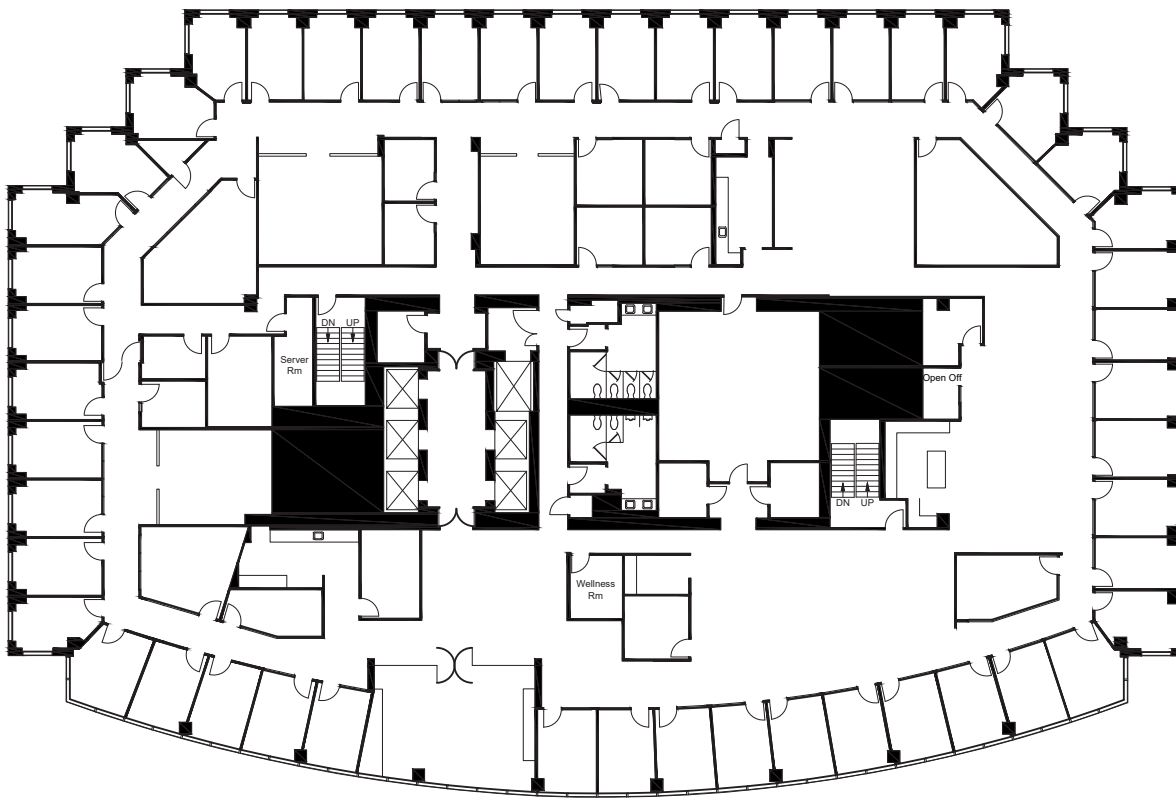
**Suite 250** - 9,245 RSF - Available Now

360°

**Suite 100** - 5,337 RSF - Available Q1 2026



## SUITE 2300



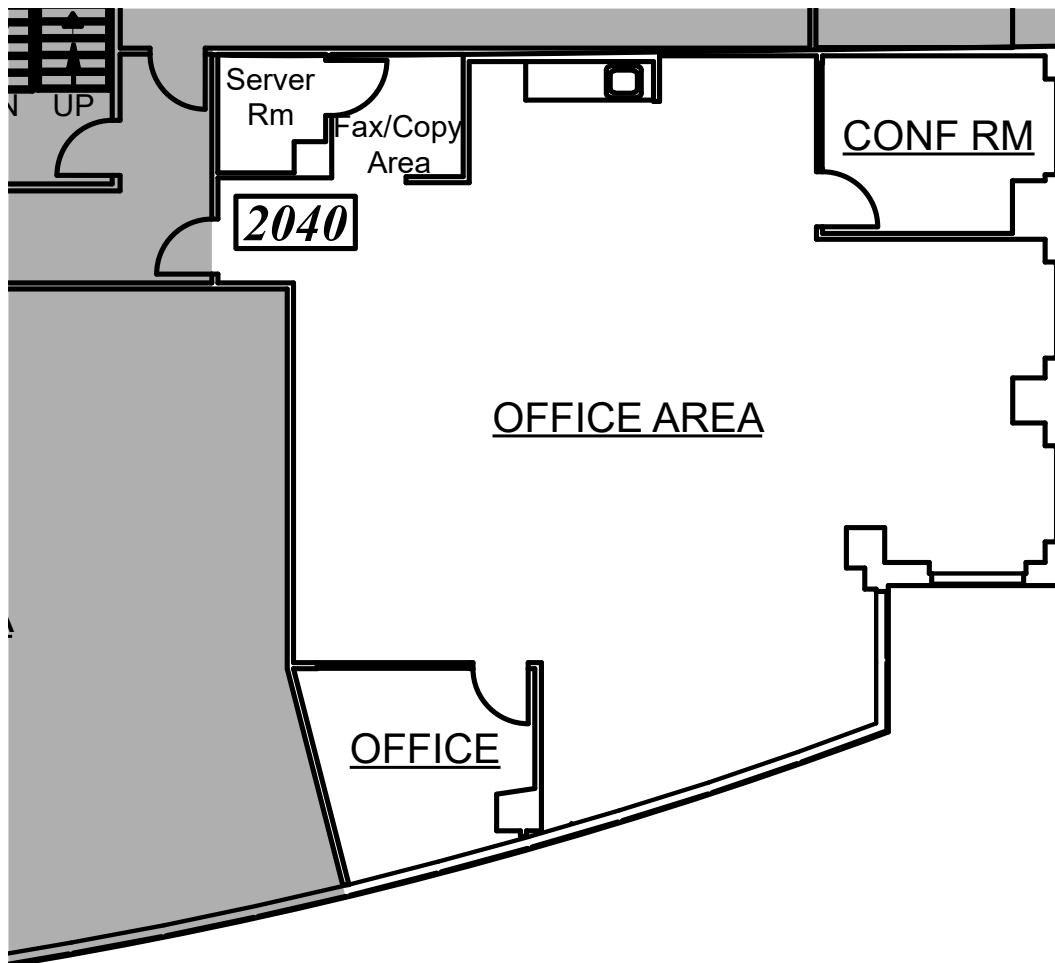
## FEATURES

- Floor: 23
- Area: ±24,410 rsf
- Available Now
- Private office intensive space
- Multiple conference rooms
- 2 conference rooms, 1 boardroom
- Excellent views from every direction (SF, Oakland, GG & Bay Bridges, Lake Merritt, Estuary)
- 2nd to top floor of the building
- Former Law Firm space

[RETURN TO AVAILABILITIES](#)



## SUITE 2040



## FEATURES

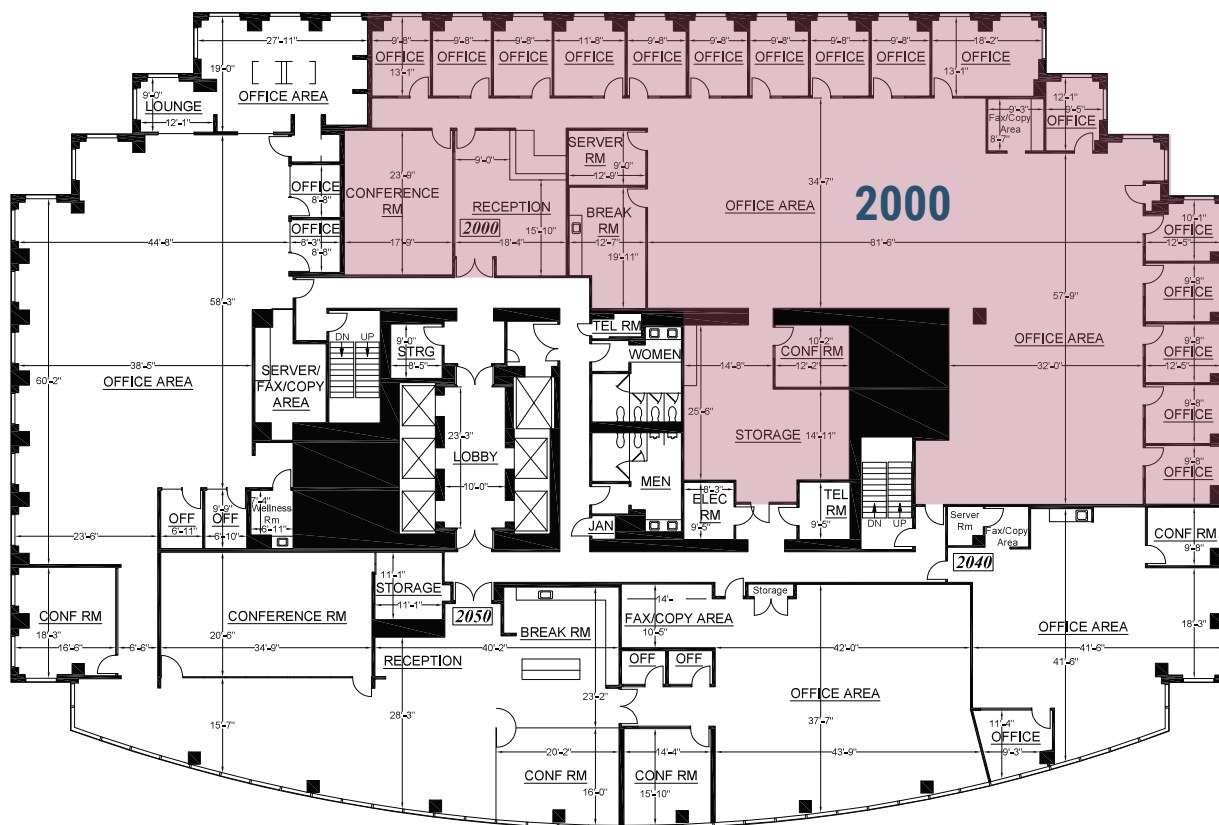
- Floor: 20
- Area: ±2,040 rsf
- Available Now
- 20th floor corner suite with expansive window-line
- Two (2) private offices, open kitchen and open area
- Excellent views overlooking city skyline and Lake Merritt



[RETURN TO AVAILABILITIES](#)



## SUITE 2000



## FEATURES

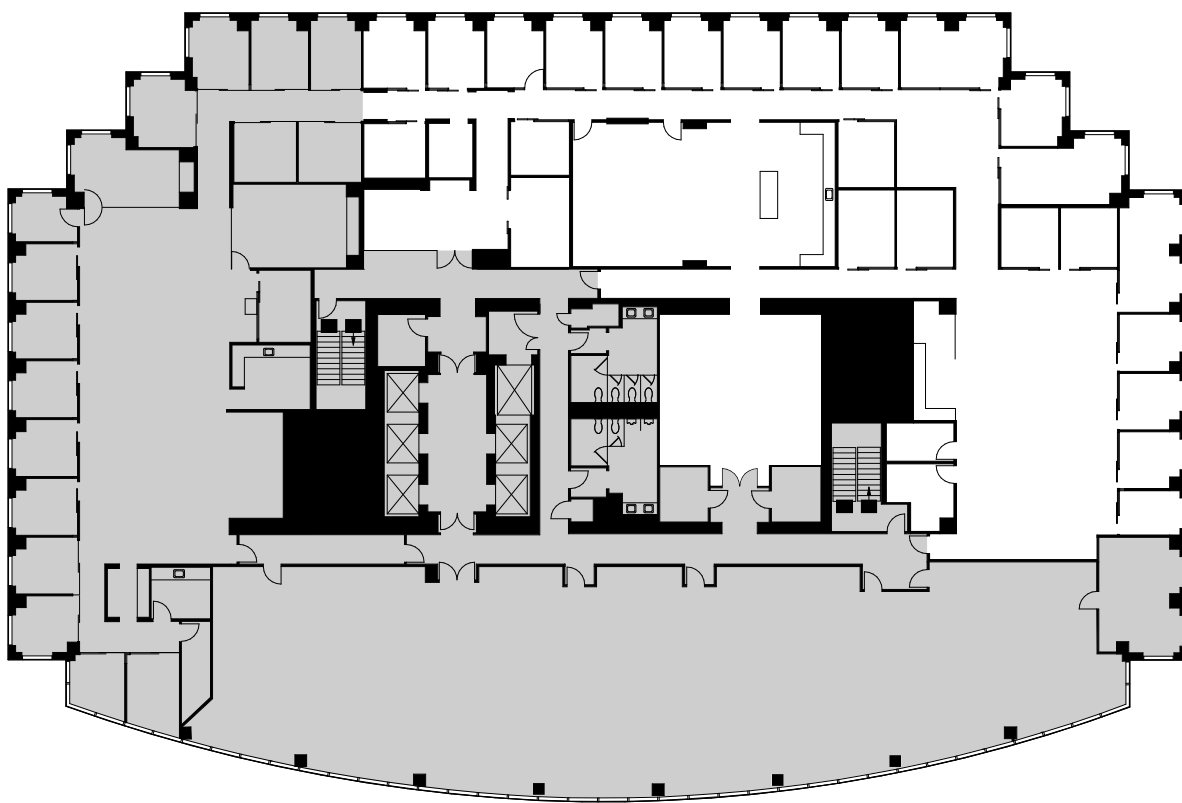
- Floor: 20
- Area: ±10,163 rsf
- Available Now
- 20th floor professional services corner suite with double door entry off elevator core
- Expansive West-facing window-line with views of San Francisco, the SF Bay, Golden Gate/Bay Bridges and Mt. Tam
- Approx sixteen (16) private offices, two (2) conference rooms, kitchen, storage room, secure reception area and open area for workstations



[RETURN TO AVAILABILITIES](#)



## SUITE 1980



## FEATURES

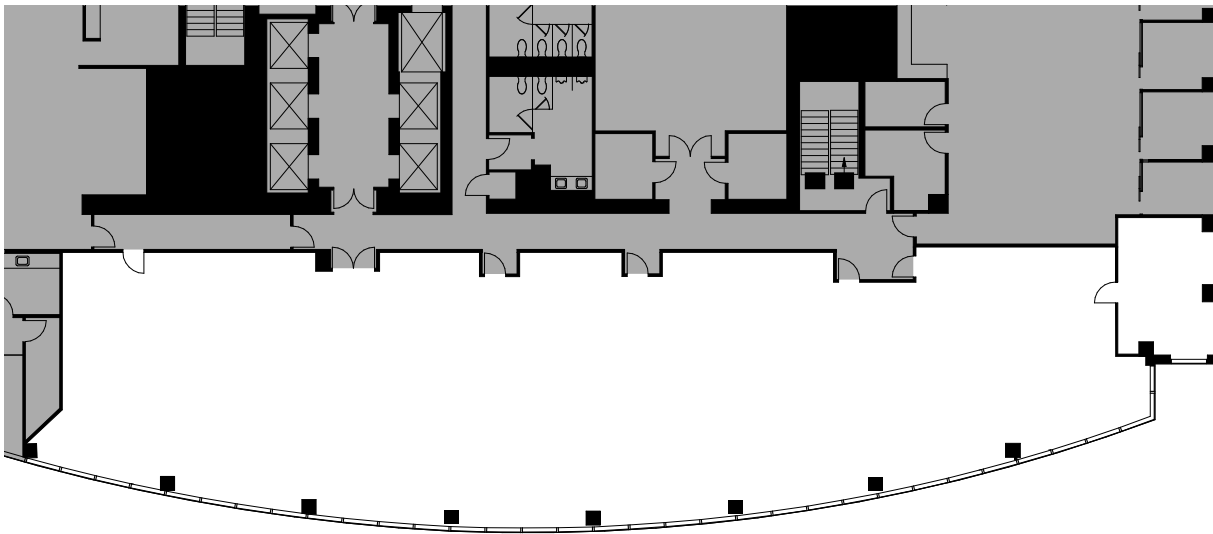
- Floor: 19
- Area:  $\pm 10,590$  rsf
- Available Now
- Spectacular highly improved space with extremely high-end furnishings
- Unparalleled Western and Southern views of San Francisco, the Bay/ Estuary, Mt. Tamalpais, and the Golden Gate and Bay Bridges
- Formal reception area with double door entry off elevator lobby
- Multiple state of the art conference rooms
- Top of the line break room with island and accodion wall to large training room to create a  $\sim 600$ sf all-hands gathering space

[RETURN TO AVAILABILITIES](#)





## SUITE 1900



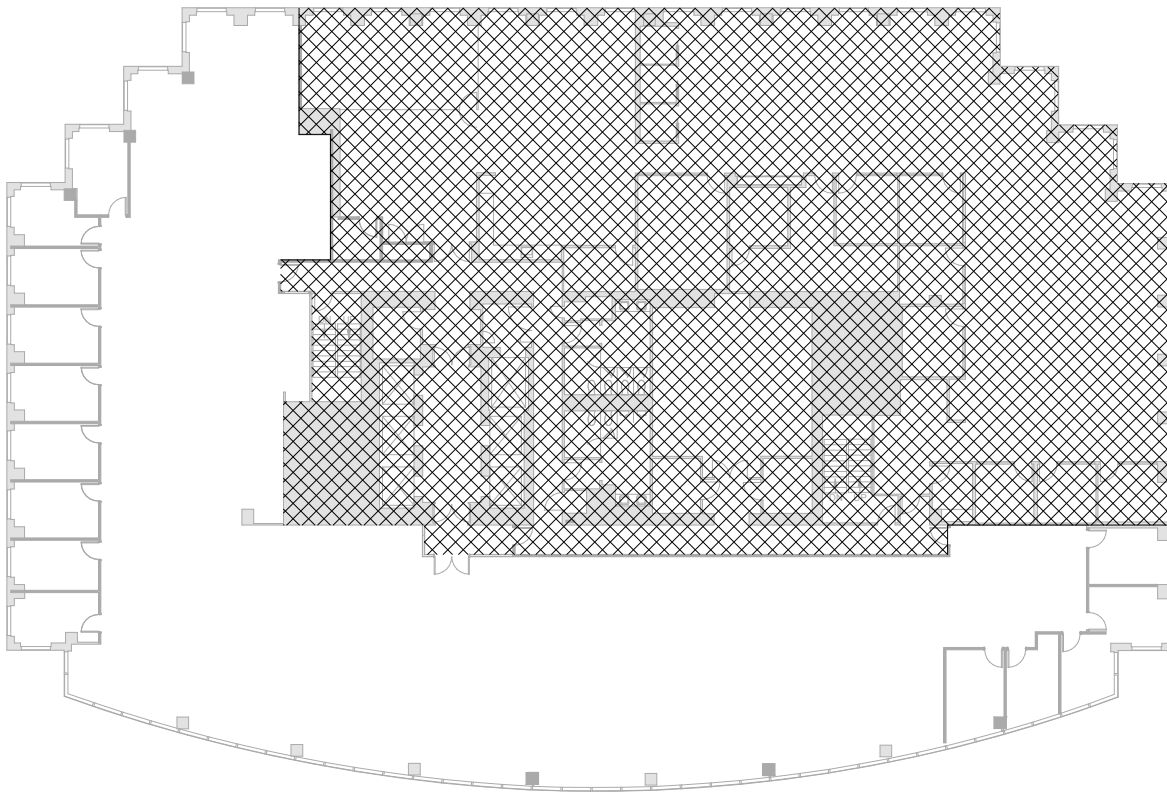
### FEATURES

- Floor: 19
- Area:  $\pm 8,194$  rsf
- Available Now
- Configured as a state of the art training/conference center
- Can be converted into a beautiful 8,194 rsf suite with spectacular views
- Floor to ceiling uninterrupted glass line
- Double door entry off elevator lobby

[RETURN TO AVAILABILITIES](#)



## SUITE 1800



## FEATURES

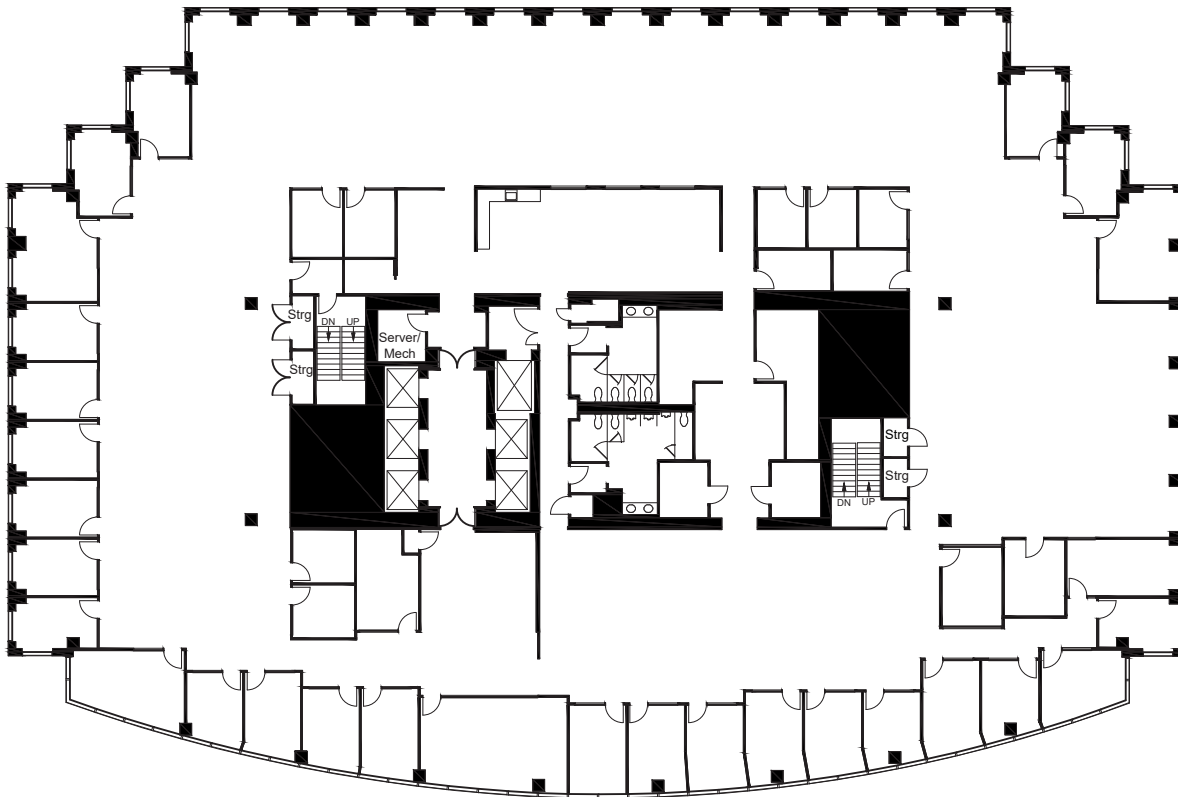
- Floor: 18
- Area:  $\pm 13,583$  rsf (divisible)
- Available Now
- Double door entry off elevator lobby
- Excellent views from every direction (SF, Bay, Estuary, Oakland Skyline)
- Divisible to  $\pm 3,000$  SF

**360°**

[RETURN TO AVAILABILITIES](#)



## SUITE 1700



## FEATURES

- Floor: 17
- Area: ±24,480 rsf
- Available 05/01/24
- Full Floor
- Excellent views
- Excellent mix of glass private offices, conference rooms and open area.

[RETURN TO AVAILABILITIES](#)



## SUITE 1600



## FEATURES

- Floor: 16
- Area: ±9,699 rsf
- Available Now
- Fully furnished
- Double door entry off elevator
- Ideal professional services suite
- 15 private offices
- 1 large and 1 medium conference room
- Secure reception area (can be opened-up)
- 36 workstations (all furniture available)
- Incredible views of San Francisco, SF Bay, GG and Bay Bridges, Mt. Tam, etc.



[RETURN TO AVAILABILITIES](#)



## SUITE 1630



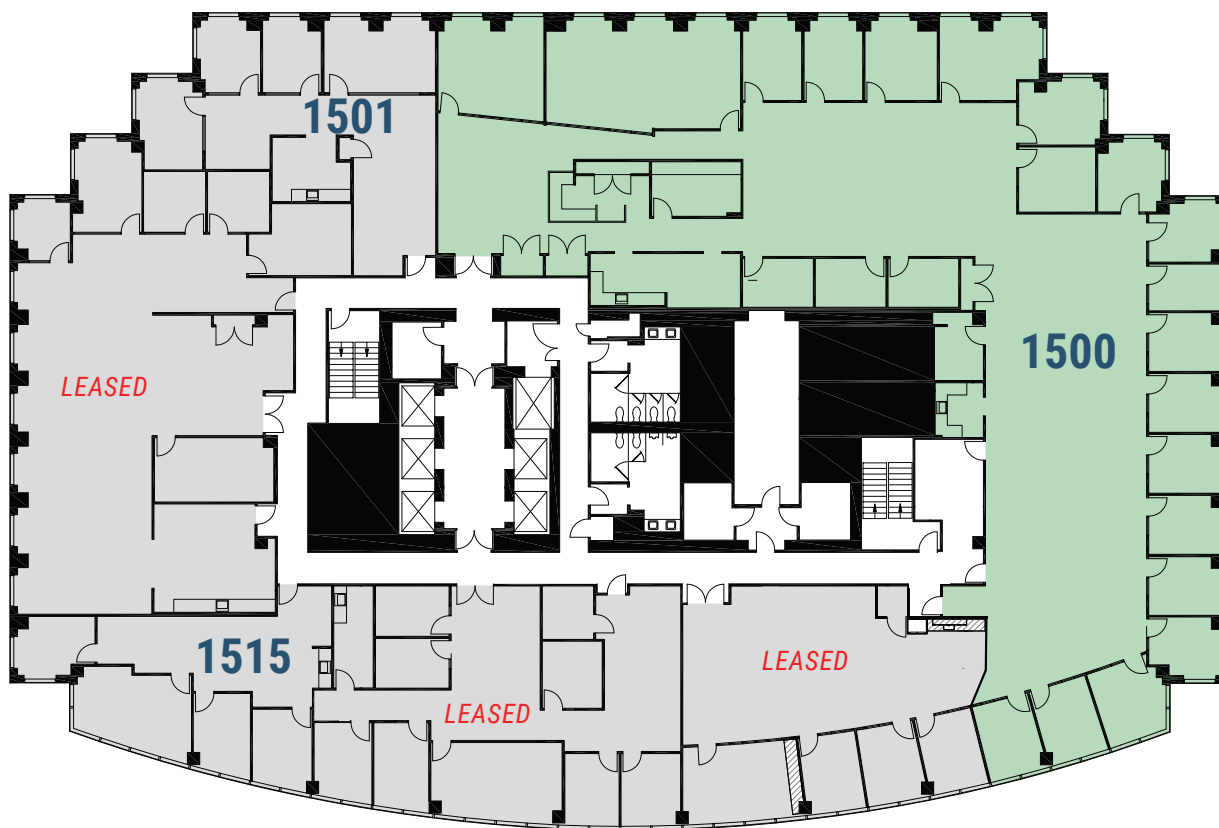
## FEATURES

- Floor: 16
- Area: ±6,328 rsf
- Available Now
- Corner suite with fantastic city, estuary & lake views
- Ideal layout for professional services firm
- 2-4 conference rooms
- 9-11 private offices
- Open space for workstations

[RETURN TO AVAILABILITIES](#)



## SUITE 1500



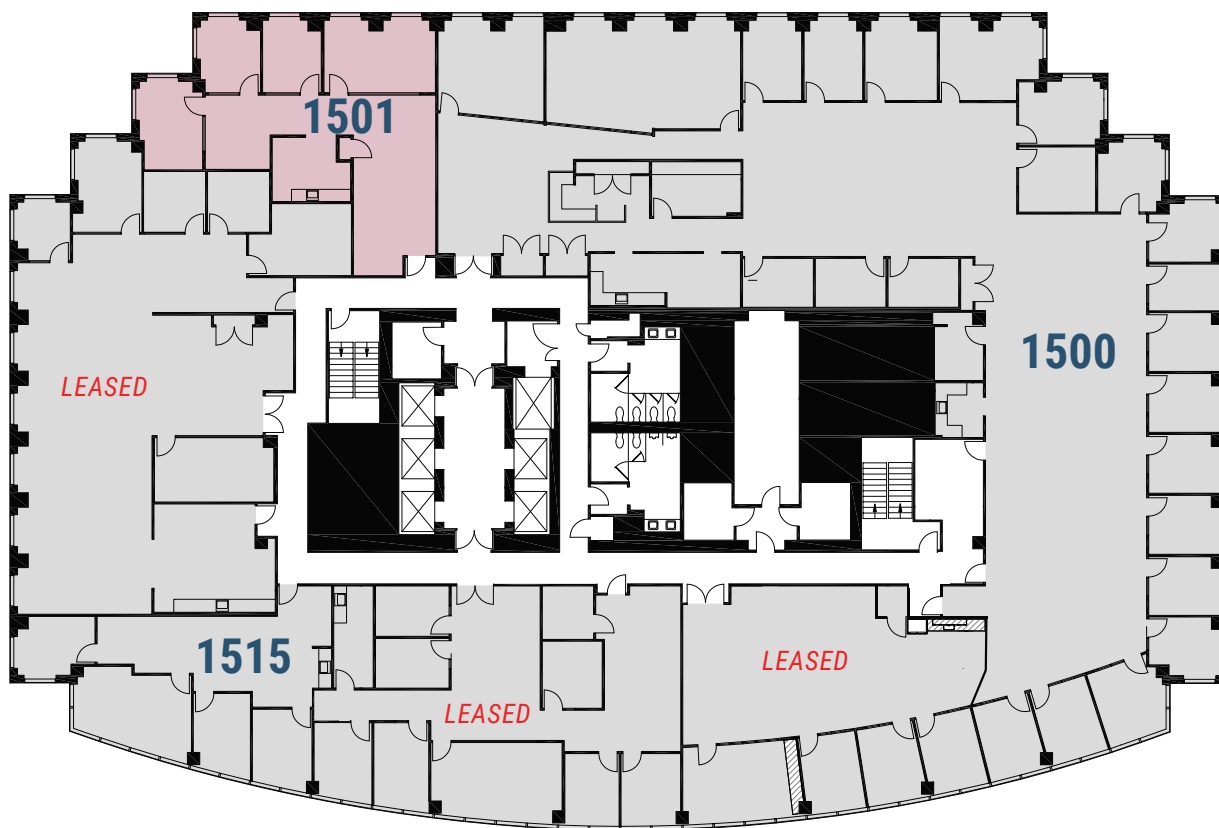
## FEATURES

- Floor: 15
- Area:  $\pm 10,717$  rsf
- Can be combined with Suite 1501 to create  $\pm 12,483$  rsf
- Available Now
- Ideal layout for professional services/ law firm
- Excellent panoramic views of SF, Oakland, SF Bay, Bridges and wrapping around to Lake Merritt
- 2 large conference rooms and several huddle rooms
- 18 window line Private offices
- Open space for workstations
- Kitchen
- Formal Reception Area

[RETURN TO AVAILABILITIES](#)



## SUITE 1501



## FEATURES

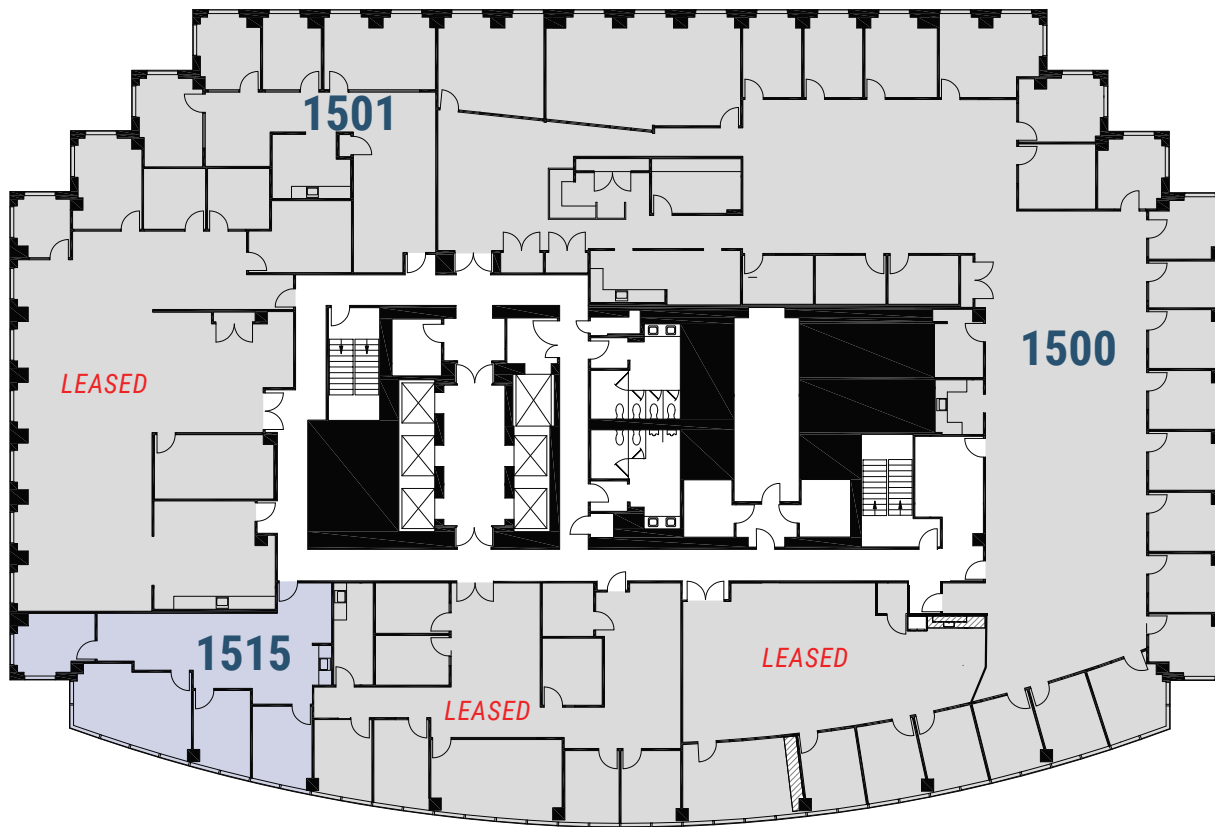
- Floor: 15
- Area:  $\pm 1,766$  rsf
- Can be combined with Suite 1500 to create  $\pm 12,483$  rsf
- Available Now
- Corner suite with incredible views of SF, SF Bay, Bridges, etc.
- 3 private window line offices
- 1 conference room
- Upgraded kitchen
- Open space for a handful of workstations



[RETURN TO AVAILABILITIES](#)



## SUITE 1515



## FEATURES

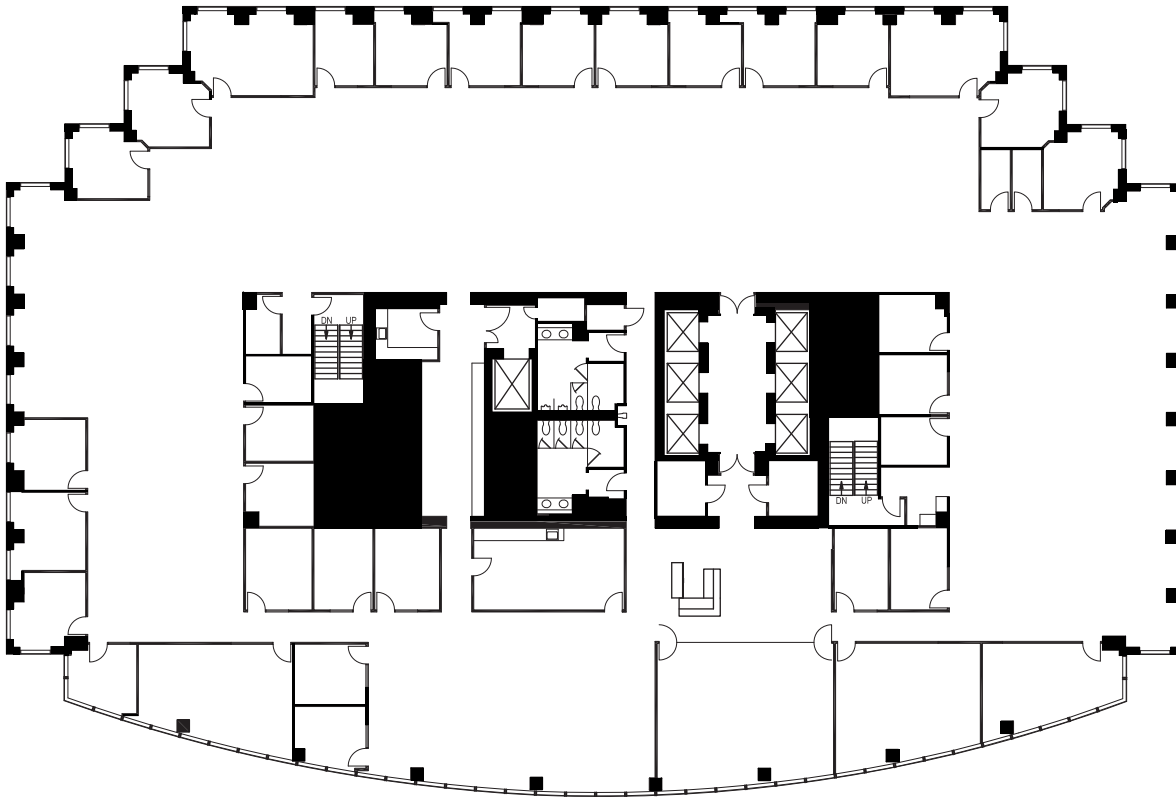
- Floor: 15
- Area:  $\pm 1,589$  rsf
- Available Now
- Great small corner suite with incredible views and glass line
- 3 private offices
- Conference Room
- Open Kitchenette
- Open space for a handful of workstations

**360°**

[RETURN TO AVAILABILITIES](#)



## SUITE 900



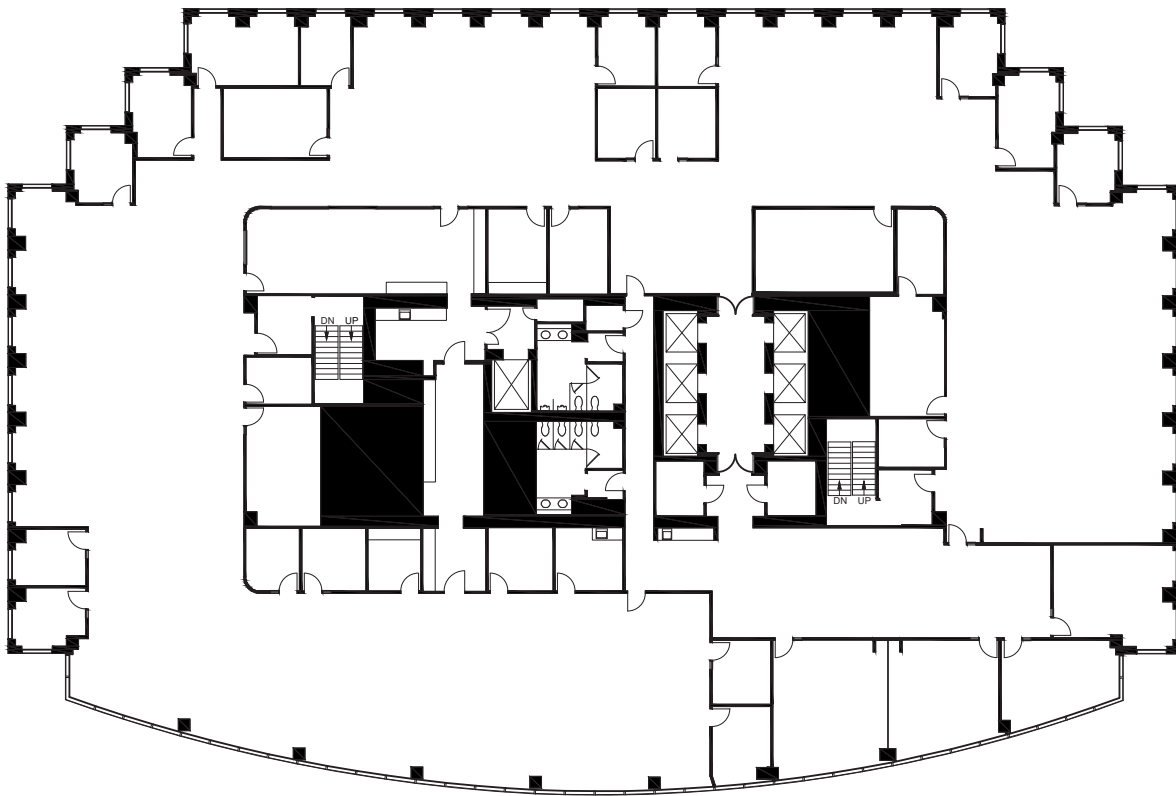
## FEATURES

- Floor: 9
- Area: ±24,141 rsf
- Available Now
- Full Floor
- Excellent views
- Excellent mix of glass private offices, conference rooms and open area.

[RETURN TO AVAILABILITIES](#)



## SUITE 700



## FEATURES

- Floor: 7
- Available 05/01/2026
- Area: ±24,245 rsf
- Fully furnished/Plug & Play ready
- Full Floor
- Excellent views
- Excellent mix of glass private offices, conference rooms and open area.



[RETURN TO AVAILABILITIES](#)



## SUITE 250



## FEATURES

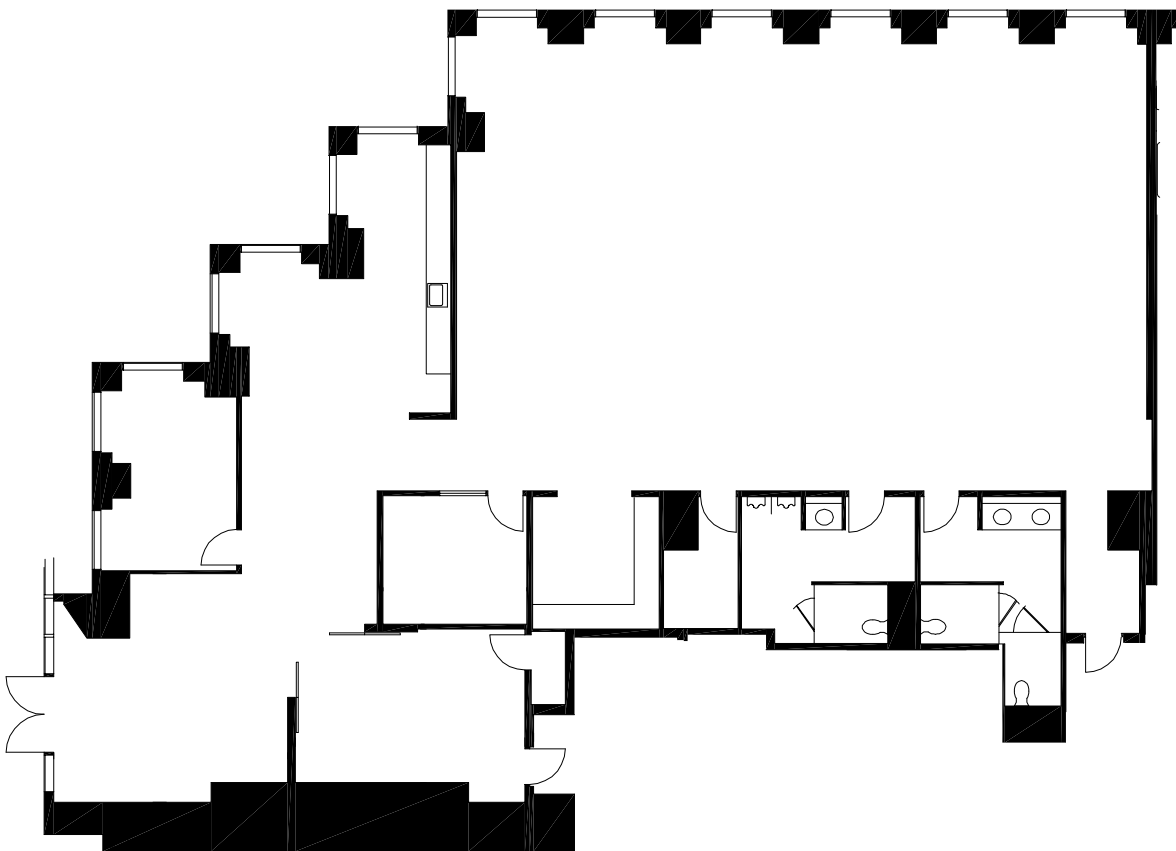
- Floor: 2
- Area: ±9,245 rsf
- Available Now
- Fully Furnished
- Double door off elevator lobby
- Extremely high ceilings with dramatic double-height window line
- Beautiful open kitchen
- Nice mix of open space, private offices and conference rooms



[RETURN TO AVAILABILITIES](#)



## SUITE 100



## FEATURES

- Floor: 1
- Area: ±5,337 rsf
- Available Q1 2026
- Beautiful suite entry from building Lobby
- Dramatic high ceilings with massive glass line provides excellent natural light and volume
- Extremely high ceilings with dramatic double-height window line
- Formal reception area
- 2 conference rooms
- 1 private office/huddle room
- Upgraded open kitchen
- Dedicated in-suite restrooms
- Open space for workstations

[RETURN TO AVAILABILITIES](#)



# AMENITIES

- Immediate BART access
- Highwire Coffee Roasters Cafe now open
- Bocanova Cocina Panamericana now open
- 5 Star conference center
- 60K SF sports club/fitness center across the street
- Plentiful parking in the building and City Center garage
- Newly landscaped plaza and walkways
- Convenient access to AC transit, Broadway shuttle, freeways and ferries
- Next to Marriott Hotel and Oakland Convention Center
- Bicycle parking in building
- Locker rooms and showers
- EV charging stations
- 24/7 on-site lobby attendants, community benefit district cleaning & safety ambassadors dedicated to the building
- Real time traffic and transit screens conveniently located in the elevator lobby

# EQUIEM

1111 Broadway's engaging tenant portal helps employees stay connected to the workplace and local community. Key features



## Tenant Communications

Access to the latest updates from property management about building events, amenities and community news



## Health and Wellness

On demand and live classes to support employee wellbeing, ranging from meditation to yoga and dance



## Covid-19 Mitigation

Access to the latest protocols to ensure the safety of all building occupants and visitors



## Building Services

Access to our tenant handbook, vendor access requests and conference room booking







## FACTS & STATS

- Full lobby renovation in 2019
- New outdoor park off lobby
- All new destination dispatch elevators
- Property Management on-site
- 24/7 tenant access & security
- Tech-ready infrastructure and service
- Three levels of underground parking with two dedicated elevators
- WiredScore Platinum Certified
- 2024 BOMA Recipient of The Outstanding Building of the Year (TOBY) Award

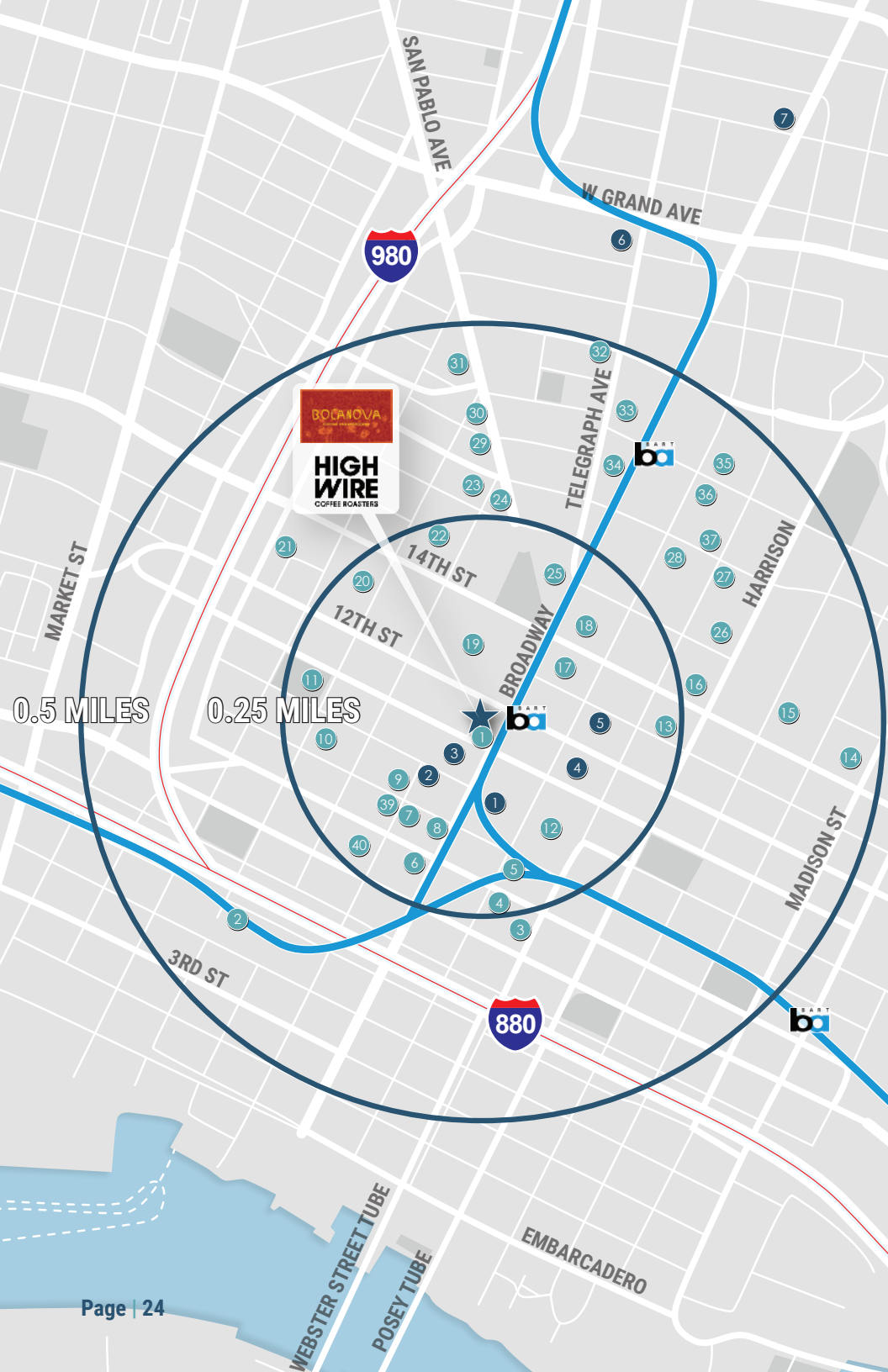
## ESG / SUSTAINABILITY

- LEED Gold Certified
- Energy Star Certified
- BOMA Earth Award Winner
- Eco-friendly cleaning program
- Assistance with “green” electronics disposal
- Programs for recycling & composting

## HVAC

- Our HVAC system is currently operating with maximum outside air, this reduces the need for re-circulated air in the building and is recommended by the CDC, OSHA and American Society of Heating and Air Conditioning Engineers (ASHRAE)
- Our Merv-15 filters have a 89-90% dust spot efficacy rate and are over 30-times more efficient at capturing micro particles than standard air filters





# WALKING AMENITIES



## RESTAURANTS

- |                                 |                            |
|---------------------------------|----------------------------|
| 1. Bocanova                     | 23. Naan n Curry           |
| 1. Highwire Coffee              | 24. World Famous HotBoys   |
| 2. BRIX 581                     | 25. Awaken Cafe & Roasting |
| 3. Imperial Soup                | 26. Tamarack               |
| 4. New Gold Medal               | 27. Senor Sisig            |
| 5. Tao Yuen Pastry              | 28. Sobre Mesa             |
| 6. Gyu-Kaku Japanese BBQ        | 29. Curry Up Now           |
| 7. Square Pie Guys              | 30. Shinmai                |
| 8. sweetgreen                   | 30. Plenty                 |
| 9. Miss Ollie's                 | 31. Hopscotch              |
| 10. Annapurna                   | 31. Belly                  |
| 11. Galeto Brazilian Steakhouse | 32. Hotbird                |
| 12. Peony Seafood               | 33. Xolo Taqueria          |
| 13. Luckyduck Bicycle Cafe      | 33. Duende                 |
| 13. Tay Ho                      | 34. Itani Ramen            |
| 14. Mo' Joe Cafe                | 35. Falafel Boy            |
| 15. Fresh & Best II             | 35. Genji Japanese         |
| 16. The Bistro                  | 36. Lotus Falafel          |
| 16. Maya Halal Taqueria         | 37. Pho 84                 |
| 17. Mockingbird                 | 37. Aburaya                |
| 17. Oakland Street Food Co.     | 38. Caffe 817              |
| 18. Trap Kitchen                | 39. Ratto's                |
| 18. Gus's World Famous          | 40. Graffiti Pizza         |
| 19. Bagel Street Cafe           |                            |
| 19. Oak Harvest Kitchen         |                            |
| 19. Zella's Soulful Kitchen     |                            |
| 19. Ladle & Leaf                |                            |
| 19. La Salsa                    |                            |
| 19. Fountain Cafe               |                            |
| 19. City Center Pizzeria        |                            |
| 20. C&C Mun-Cheeze Pizza        |                            |
| 20. Roasted and Raw             |                            |
| 21. Rio California              |                            |
| 22. Taqueria La Venganza        |                            |

## HOTELS

- |                          |
|--------------------------|
| 1. Courtyard by Marriott |
| 2. Washington Inn        |
| 3. Oakland Marriott      |
| 4. Hampton Inn           |
| 5. Ramada by Wyndham     |
| 6. Moxy Oakland          |
| 7. Kissel Uptown Oakland |





**1111**  
**BROADWAY**

## THE EAST BAY'S PREMIER OFFICE TOWER

FOR LEASING INQUIRIES CONTACT

RYAN **HATTERSLEY**

Vice Chairman

[ryan.hattersley@cushwake.com](mailto:ryan.hattersley@cushwake.com)

+1 510 891 5802

Lic. #01354553

RYAN **DALTON**

Director

[ryan.dalton@cushwake.com](mailto:ryan.dalton@cushwake.com)

+1 510 891 5810

Lic. #01809447



555 12<sup>th</sup> Street, Suite 100, Oakland CA 94607

+1 510 465 8000 | Lic. #00616335

[cushmanwakefield.com](http://cushmanwakefield.com)

11/04/25

©2025 Cushman & Wakefield. All rights reserved. The information contained in this communication is strictly confidential. This information has been obtained from sources believed to be reliable but has not been verified. NO WARRANTY OR REPRESENTATION, EXPRESS OR IMPLIED, IS MADE AS TO THE CONDITION OF THE PROPERTY (OR PROPERTIES) REFERENCED HEREIN OR AS TO THE ACCURACY OR COMPLETENESS OF THE INFORMATION CONTAINED HEREIN, AND SAME IS SUBMITTED SUBJECT TO ERRORS, OMISSIONS, CHANGE OF PRICE, RENTAL OR OTHER CONDITIONS, WITHDRAWAL WITHOUT NOTICE, AND TO ANY SPECIAL LISTING CONDITIONS IMPOSED BY THE PROPERTY OWNER(S). ANY PROJECTIONS, OPINIONS OR ESTIMATES ARE SUBJECT TO UNCERTAINTY AND DO NOT SIGNIFY CURRENT OR FUTURE PROPERTY PERFORMANCE.