

Retail Space
FOR LEASE
OR SALE



527 + 532
WEST 27TH STREET WEST 28TH STREET

BETWEEN TENTH AND ELEVENTH AVENUES

Rare opportunity to lease or buy retail space in Jardim, West Chelsea's most exciting boutique development. Marrying functional layouts with unique contemporary style, these stores are ideal not just for galleries but also for any neighborhood service that will appreciate the property's central location and prominent presence.

 **SINVIN**
COMMERCIAL REAL ESTATE & ADVISORY

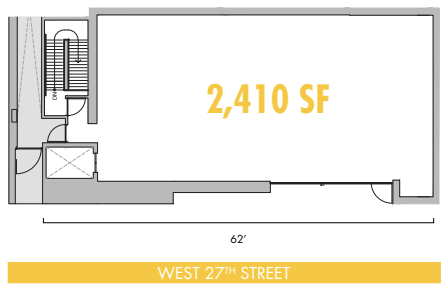


527
WEST 27TH STREET

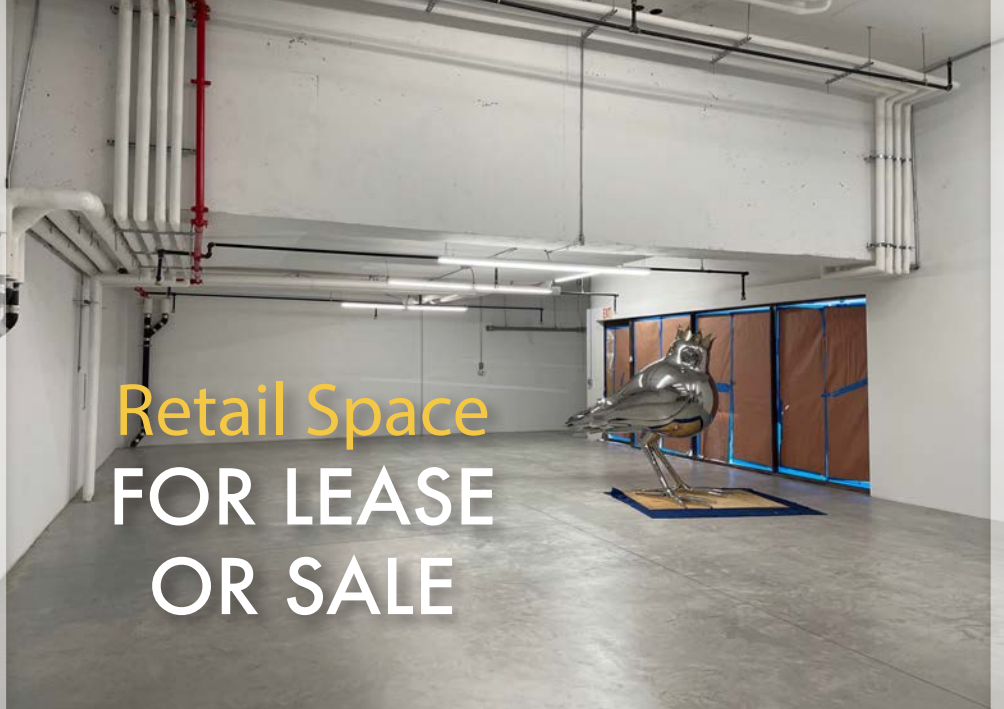
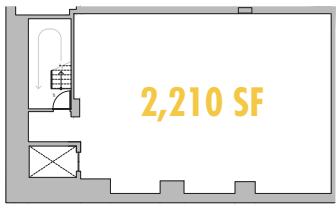
Ground Floor: 2,410 SF
 Usable Lower Level: 2,210 SF
 Frontage: 62'
 Ceiling Ground Floor: 20' & 13'
 Ceiling Lower Level: 12'



GROUND FLOOR



USABLE LOWER LEVEL



532 WEST 28TH STREET

Ground Floor: 3,895 SF | Usable Lower Level: 814 SF

Divisions: 1,300 SF Ground

2,595 SF Ground/814 SF Lower Level

Frontage: 78'

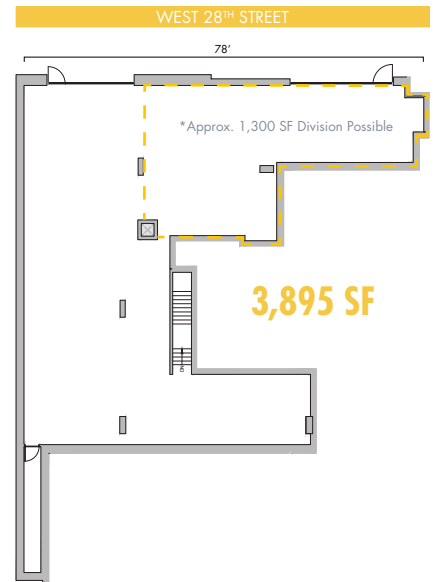
Ceiling Ground Floor: 13' | Ceiling Lower Level: 12'



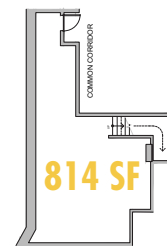
Retail Space
FOR LEASE
OR SALE



GROUND FLOOR



USABLE LOWER LEVEL

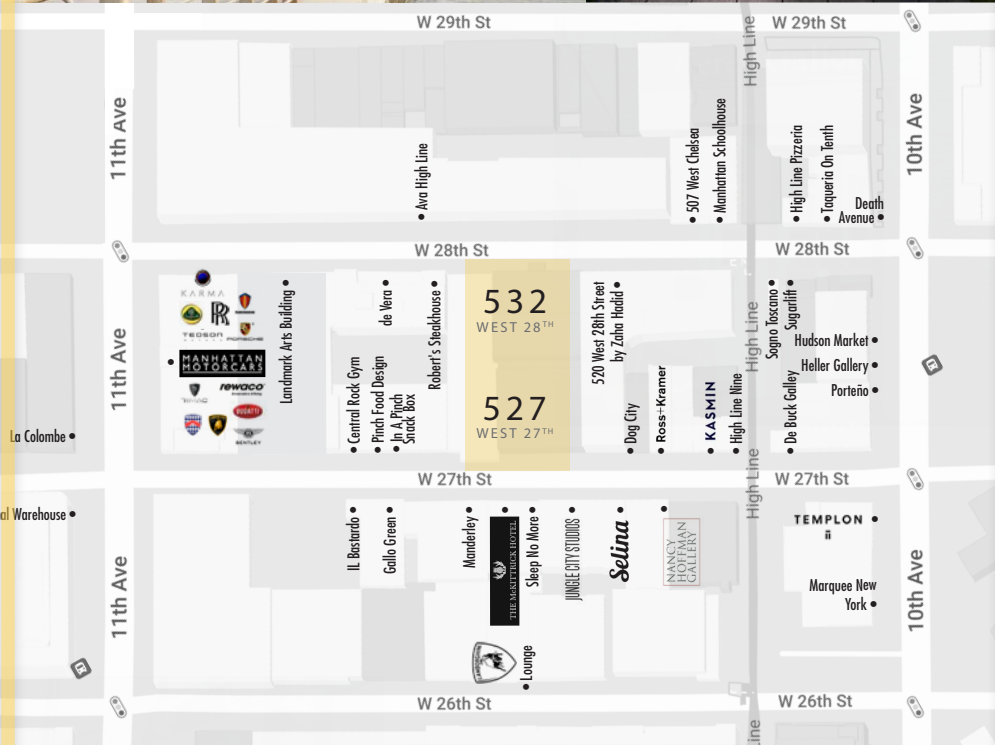




527 + 532
 WEST 27TH STREET WEST 28TH STREET

ADDITIONAL FEATURES:

- Jardim is a luxury condominium building designed by Isay Weinfeld
- No use restrictions
- Parking spots can be made available
- 27th Street unit features a private elevator and a roof where sculptures can be displayed
- Storefront window panels slide open completely on 27th Street



For more information, please contact:

Christopher Owles
 212.604.9002
 chris@sinvin.com

Margie Sarway
 646.673.8742
 margie@sinvin.com

