

5901 Westtown Parkway

West Des Moines, Iowa
www.cbre.com/desmoines

Medical Office

+ Available Space

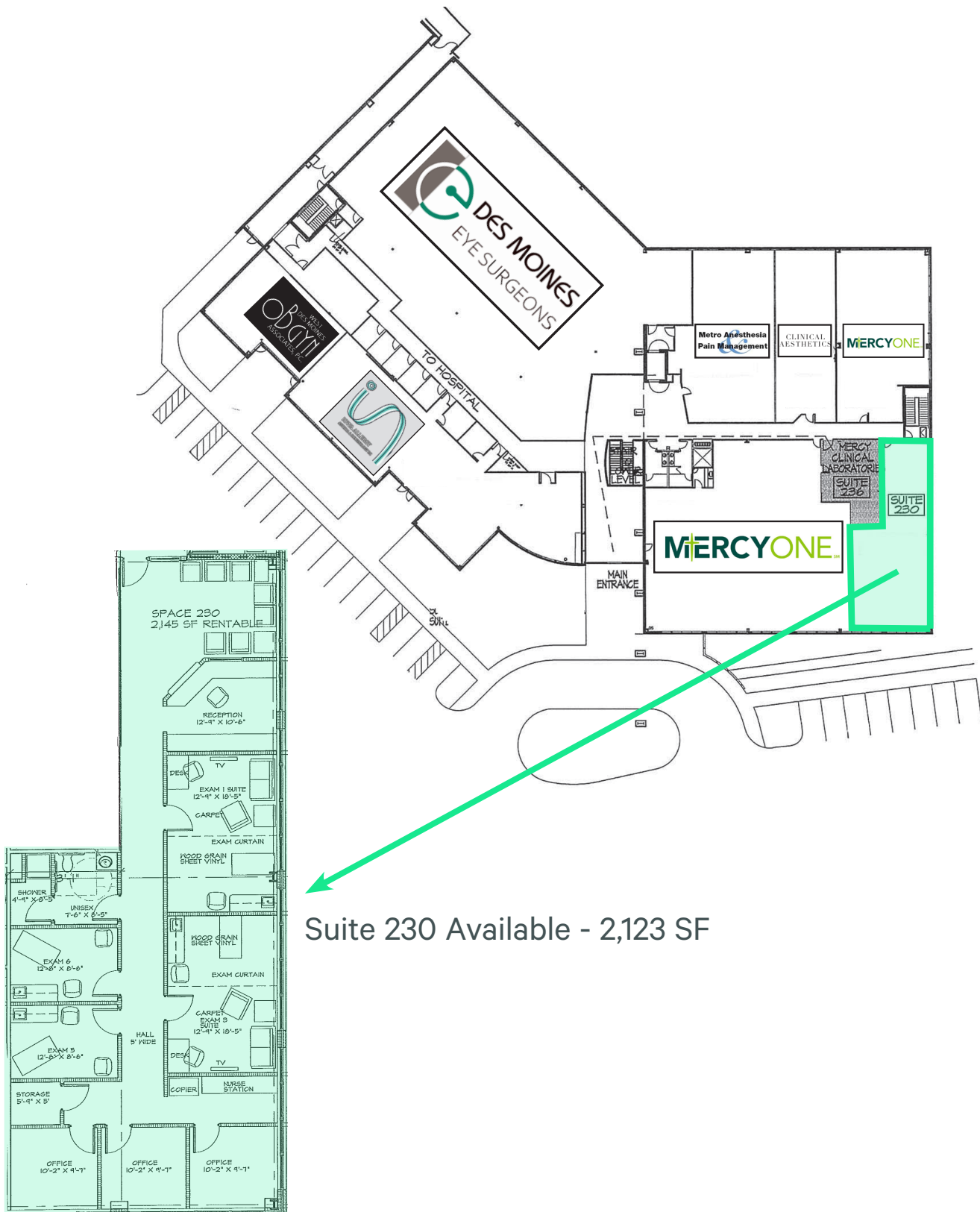
- Suite 230: 2,123 SF - \$ 23.00/SF NNN As-Is Existing Medical Buildout in Place - Main Level
- Suite 115: 1,947 SF - \$16/SF NNN - \$130/SF TI Allowance
10 Year Lease For Qualified Tenants

+ Property Features

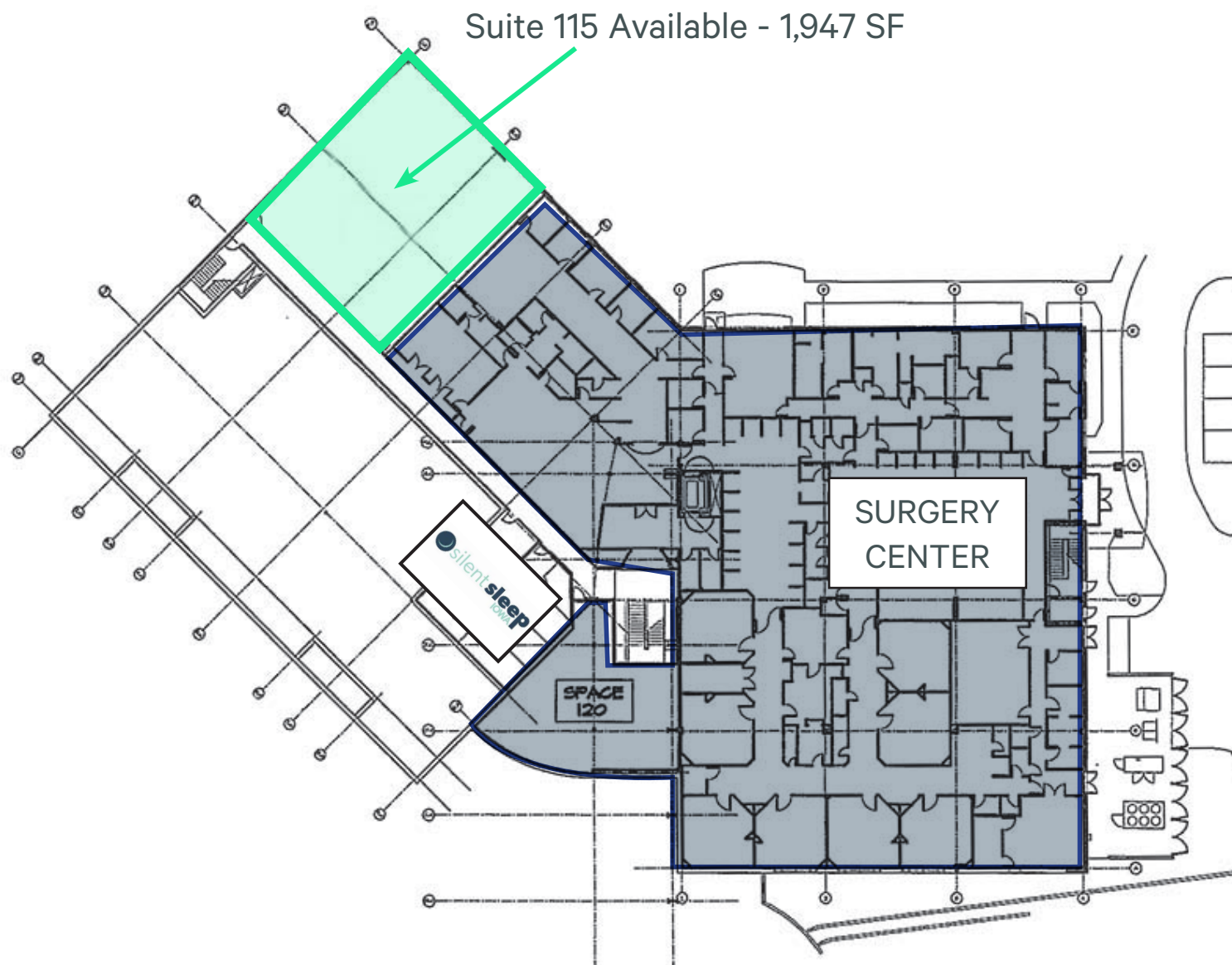
- At the corner of 60th Street & Westtown Parkway
- Premier Class A medical space available
- Visibility and access in the heart of the west side “Medical Mile”
- Attached by internal walkway to Mercy West Hospital



Floor Plan - 2nd Floor



Floor Plan - 1st Floor



5901 Westown Parkway
West Des Moines, Iowa

For Lease

Location



Contact Us

Riley Hogan

Senior Vice President

+1 515 778 0739

riley.hogan@cbre.com

Licensed in the State of Iowa

Ben Probst

Senior Associate

+1 515 326 1985

ben.probst@cbre.com

Licensed in the State of Iowa

© 2025 CBRE, Inc. All rights reserved. This information has been obtained from sources believed reliable, but has not been verified for accuracy or completeness. You should conduct a careful, independent investigation of the property and verify all information. Any reliance on this information is solely at your own risk. CBRE and the CBRE logo are service marks of CBRE, Inc. All other marks displayed on this document are the property of their respective owners, and the use of such logos does not imply any affiliation with or endorsement of CBRE. Photos herein are the property of their respective owners. Use of these images without the express written consent of the owner is prohibited.