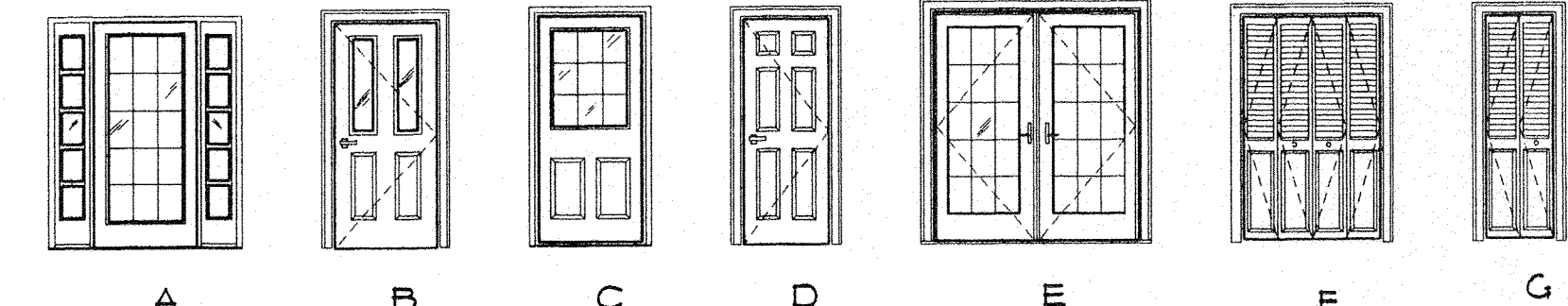


DOOR SCHEDULE

NO.	DOOR TYPE	DOOR SIZE	FRAME	HARDWARE	REMARKS
I-1	A	3'-0" x 4'-8"	WOOD PRE-HUNG	SCHLAGE-105881 LATCH I DEAD BOLT	FIBERGLASS INSULATED DOOR WITH SIDELITES
I-2	B	3'-0" x 4'-8"	WOOD PRE-HUNG	SCHLAGE-105881 LATCH I DEAD BOLT	FIBERGLASS INSULATED DOOR
I-3	G	2'-0" x 4'-8"	WOOD PRE-HUNG	WOOD PULL KNOB	
I-4	D	2'-4" x 4'-8"	WOOD PRE-HUNG	SCHLAGE-115048 W/ PUSH BUTTON LOCK	4 PANEL PINE
I-5	D	2'-4" x 4'-8"	WOOD PRE-HUNG	SCHLAGE-115048 W/ PUSH BUTTON LOCK	4 PANEL PINE
I-5A	D	1'-8" x 4'-8"	WOOD PRE-HUNG	WOOD PULL KNOB	
I-4	D	3'-0" x 4'-8"	WOOD PRE-HUNG	SCHLAGE-114376 PASSAGE	4 PANEL PINE
I-7	D	3'-0" x 4'-8"	WOOD PRE-HUNG	SCHLAGE-115048 W/ PUSH BUTTON LOCK	4 PANEL PINE
I-8	D	3'-0" x 4'-8"	WOOD PRE-HUNG	SCHLAGE-114376 PASSAGE	4 PANEL PINE
I-9	D	2'-8" x 4'-8"	WOOD PRE-HUNG	SCHLAGE-114121 KEYED	4 PANEL PINE
I-10	D	2'-8" x 4'-8"	WOOD PRE-HUNG	SCHLAGE-114121 KEYED	4 PANEL PINE
I-11	F	4'-0" x 4'-8"	WOOD PRE-HUNG	SCHLAGE-114121 KEYED	4 PANEL PINE
I-12	D	3'-0" x 4'-8"	WOOD PRE-HUNG	SCHLAGE-114121 KEYED	4 PANEL PINE
I-13	D	3'-0" x 4'-8"	WOOD PRE-HUNG	SCHLAGE-114121 KEYED	4 PANEL PINE
I-14	D	2'-0" x 4'-8"	WOOD PRE-HUNG	WOOD PULL KNOB	
I-15	D	3'-0" x 4'-8"	WOOD PRE-HUNG	SCHLAGE-114121 KEYED	4 PANEL PINE
I-16	E	2'-3'-0" x 4'-8"	WOOD PRE-HUNG	SCHLAGE-114121 KEYED	4 PANEL PINE
I-17	D	2'-4" x 4'-8"	WOOD PRE-HUNG	SCHLAGE-115048 W/ PUSH BUTTON LOCK	4 PANEL PINE
I-18	D	2'-4" x 4'-8"	WOOD PRE-HUNG	SCHLAGE-114376 PASSAGE	4 PANEL PINE
I-19	E	2'-3'-0" x 4'-8"	WOOD PRE-HUNG	SCHLAGE-114376 PASSAGE	4 PANEL PINE
I-20	D	3'-0" x 4'-8"	WOOD PRE-HUNG	SCHLAGE-114376 PASSAGE	4 PANEL PINE
I-21	G	2'-0" x 4'-8"	WOOD PRE-HUNG	WOOD PULL KNOB	
B-1	D	2'-8" x 4'-8"	WOOD PRE-HUNG	SCHLAGE-114376 PASSAGE	4 PANEL PINE
B-1	D	3'-0" x 4'-8"	HOLLOW METAL	SCHLAGE-105881 LATCH I DEAD BOLT	METAL INSULATED DOOR
B-2	D	3'-0" x 4'-8"	HOLLOW METAL	SCHLAGE-114121 KEYED	4 PANEL PINE
B-3	D	3'-0" x 4'-8"	HOLLOW METAL	SCHLAGE-114121 KEYED	4 PANEL PINE
B-4	D	3'-0" x 4'-8"	WOOD PRE-HUNG	SCHLAGE-114376 PASSAGE	4 PANEL PINE
B-5	D	3'-0" x 4'-8"	WOOD PRE-HUNG	SCHLAGE-114376 PASSAGE	4 PANEL PINE



FINISH SCHEDULE

NO.	NAME	FLOOR	BASE	WALLS	CEILING	REMARKS
1	FOYER	CARPET	VCT	GYP'BD	GYP'BD	
2	CLOSET	VCT	VCT	GYP'BD	GYP'BD	WOOD SHELF AND CLOTHES ROD
3	CLOSET	VCT	VCT	GYP'BD	GYP'BD	WOOD SHELF AND CLOTHES ROD
4	WAITING	CARPET	VCT	GYP'BD	GYP'BD	
5	BATH #1	VCT	VCT	GYP'BD	GYP'BD	MARBLE THRESHOLD DOOR I-4
6	CLOSET	VCT	VCT	GYP'BD	GYP'BD	5 WOOD SHELVES
7	BREAK	VCT	VCT	GYP'BD	GYP'BD	MARBLE THRESHOLD DOOR I-4 - KITCHEN CABINETS
8	HC BATH #1	VCT	VCT	GYP'BD	GYP'BD	
9	STAFF	CARPET	VCT	GYP'BD	GYP'BD	HALF HEIGHT WALL / BUILT-IN CASE WORK
10	STAIRWAY	VCT	VCT	GYP'BD	GYP'BD	PAINTED PINE STAIRS W/ WOOD HANDRAIL
11	SUPPLIES	VCT	VCT	GYP'BD	GYP'BD	5- BUILT-IN SHELVES
12	FILES #1	CARPET	VCT	GYP'BD	GYP'BD	
13	OFFICE #1	CARPET	VCT	GYP'BD	GYP'BD	FIXED INTERIOR CASEMENT
14	HALL	CARPET	VCT	GYP'BD	GYP'BD	
15	CLOSET	VCT	VCT	GYP'BD	GYP'BD	WOOD SHELF AND CLOTHES ROD
16	OFFICE #2	CARPET	VCT	GYP'BD	GYP'BD	FIXED INTERIOR CASEMENT
17	OFFICE #3	CARPET	VCT	GYP'BD	GYP'BD	FIXED INTERIOR CASEMENT
18	OFFICE #4	CARPET	VCT	GYP'BD	GYP'BD	FIXED INTERIOR CASEMENT
19	BATH #2	CERAMIC TILE	CERAMIC	GYP'BD	GYP'BD	
20	BAR	CERAMIC TILE	CERAMIC	GYP'BD	GYP'BD	BUILT-IN CASEWORK
21	CONFERENCE	CARPET	VCT	GYP'BD	GYP'BD	
22	RECEPTION	CARPET	VCT	GYP'BD	GYP'BD	BUILT-IN CASE WORK SLIDING SERVING WINDOWS
23	FILES #2	CARPET	VCT	GYP'BD	GYP'BD	HALF HEIGHT WALL
B-1	BASEMENT	CONC	VCT	GYP'BD	EXPOSED	
B-2	MECHANICAL	CONC	VCT	GYP'BD	GYP'BD	RATED GYPSUM BOARD
B-3	CLOSET	CONC	VCT	GYP'BD	GYP'BD	
B-4	STAIRWAY	VCT	VCT	GYP'BD	GYP'BD	
B-5	STORAGE	VCT	VCT	GYP'BD	GYP'BD	3X4 TREATED RAISED FLOOR W/ 3/4" PLYWOOD

FOUNDATION WATERPROOFING

PROVIDE LIQUID APPLIED POLYMER-MODIFIED ASPHALT MEMBRANE WITH 30 PERFS FOR 40-ML DRY COATING SIMILAR TO OENS/CORNING TUFF-N-DRY.
 PROVIDE 4" PERFORATED PERIMETER DRAIN SET IN GRAVEL BED AROUND PERIMETER OF BASEMENT FOOTING. RUN OUTLET TO DAYLIGHT OR DRYWELL.

WOOD FRAMING

WOOD FRAMING MEMBERS DESIGNED AS SPRUCE-PINE-FIR #2 WITH FEM-DOORS, E-WOODDOORS.
 FIRST FLOOR DESIGN LOAD 40PSF
 SECOND FLOOR DESIGN LOAD 40PSF
 ROOF DESIGN LOAD LIVE LOAD 40PSF
 DEAD LOAD 10PSF

DOUBLE-UP FLOOR JOIST THAT RUN UNDER PARALLEL STUD PARTITIONS.
 ALL BEARING WINDOW AND DOOR HEADERS SHALL BE 2-2X2'S UNLESS OTHERWISE NOTED ON THE DRAWINGS.

JOIST HANGERS-SUPPORT ALL JOISTS BUTTING INTO HEADERS/BEAMS WITH HGA GALVANIZED STEEL JOIST HANGERS-SIMPSON HEAVY DUTY JOIST HANGERS HX/HM SERIES OR EQUAL. PROVIDE ADEQUATE BLOCKING FOR HANGING DRAPERY, TOILET ACCESSORIES, SHELVES, BATH CABINETS, CLOTHES RODS, ETC.

ALL WOOD MEMBERS IN CONTACT WITH CONCRETE MASONRY OR SOIL SHALL BE PRESSURE TREATED AND SHALL CONFORM TO AITC 109-4.9

PROVIDE SIMPSON TENSION METAL BRIDGING AT MIN-SPAN OF JOIST MEMBERS.
 PROVIDE DOUBLE WOOD FRAMING MEMBERS FOR OPENINGS IN WALLS, FLOORS, CEILINGS, RAFTERS, AND TRUSSES.

PROVIDE 1/2" PLYWOOD GUSSET PLATES ON EACH FACE OF FRAMING MEMBER THAT REQUIRE PENETRATION OF MECHANICAL SYSTEMS. MAXIMUM OPENING ALLOWED: AT MID LINE OF MEMBER IS 1" HOLE.

DRYWALL WORK

POSITION ALL ENDS AND EDGES OF ALL GYPSUM PANELS OVER FRAMING MEMBERS EXCEPT WHEN JOINTS ARE AT RIGHT ANGLES TO FRAMING MEMBERS AS IN PERPENDICULAR APPLICATION OR WHEN END JOINTS ARE BACKSLOTTED.

APPLY GYPSUM PANELS FIRST TO THE CEILING AND THEN TO THE WALLS. EXTEND CEILING BOARD INTO CORNERS AND MAKE CONTACT WITH TOP PLATE. TO MINIMIZE END JOINTS, USE PANELS OF MAXIMUM PANEL LENGTHS. FIT ENDS AND EDGES CLOSELY, BUT NOT FORCED TOGETHER. STAGGER END JOINTS IN SUCCESSIVE COURSES WITH JOINTS ON OPPOSITE SIDES OF A PARTITION PLACED DIFFERENT STUDS.

SPACE FASTENERS NOT LESS THAN 1/8" FROM ENDS AND ENDS OF PANELS. DRIVE AS RECOMMENDED FOR SPECIFIED FASTENING METHOD. DRIVE FASTENER HEADS SLIGHTLY BELOW SURFACE OF GYPSUM PANELS IN A UNIFORM Dimple FASTENING METHOD.

INSTALL TRIM AT ALL INTERNAL AND EXTERNAL ANGLES FORMED BY THE INTERSECTION OF EITHER PANEL SURFACES OR OTHER SURFACES. APPLY CORNER BEAD TO ALL VERTICAL OR HORIZONTAL EXTERNAL CORNERS IN ACCORDANCE WITH MANUFACTURER'S DIRECTIONS.

REINFORCE ALL VERTICAL AND HORIZONTAL EXTERIOR CORNERS WITH CORNER BEAD FASTENED WITH 1/4" GALVANIZED STAPLES 4" O.C. OR BOTH FLANGES ALONG ENTIRE LENGTH OF BEAD.

WHERE ASSEMBLY TERMINATES AGAINST MASONRY OR OTHER DISMILAR MATERIAL, APPLY METAL TRIM OVER PANEL EDGE AND FASTEN WITH 1/4" GALVANIZED STAPLES 4" O.C.

PROPERLY TAPE AND SPACKLE ALL JOINTS, OPENINGS, CORNERS, ETC. THREE (3) COATS. DO NOT PAINT UNTIL TAPING AND SPACKLING HAS BEEN ACCEPTED BY THE OWNER.

ALL NEW GYPSUM WALLBOARD WALLS AND CEILINGS, UNLESS OTHERWISE NOTED, TO RECEIVE PRIME COAT PLUS TWO FINISH COATS OF INTERIOR LATEX FLAT PAINT EQUAL TO BENJAMIN MOORE WALL SATIN FINISH PAINT. COLOR AS SELECTED BY OWNER.

IT IS THE INTENT OF THE PROJECT TO PAINT AND/OR STAIN ALL PARTS, WOOD, GYPSUM BOARD, METALS, INTERIOR WALLS, CEILING, TRIM, SONGS, SCOFFS, ETC. INSIDE AND OUT, WHETHER SPECIFICALLY NOTED OR NOT. CONTRACTOR IS TO VERIFY ALL PAINT, STAINS, ETC. WITH THE OWNER BEFORE PROCEEDING.

ENERGY CONSERVATION

CONSTRUCTION ENVELOPE DESIGNED BY ACCEPTABLE PRACTICE FOR 1000 - 8499 DEGREE DAYS WITH THERMIST R VALUES FOR GAS/OL/HEAT AS FOLLOWS

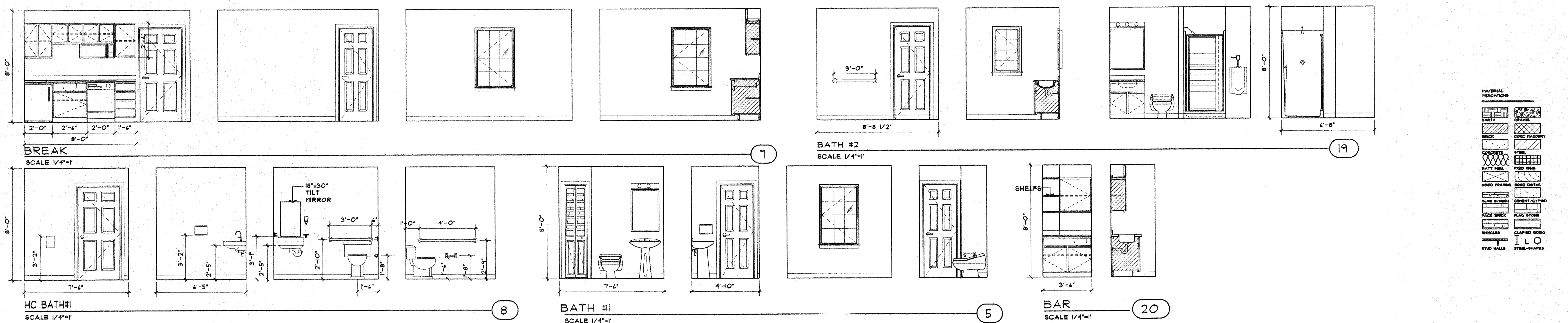
WALLS	R-21
ROOF	R-41
FLOOR	R-21
FOUNDATION	R-10
SLAB EDGE	R-10
GLAZING	R-17
DOOR	R-25

ACTUAL RATING BY BUILDING COMPONENT:

BUILDING ENERGY COMPONENTS VALUES

ROOF-Truss	R	WALL-Vinyl	R	FOUNDATION-basi	R
0.11 AIR FILT.		0.11 1" CONCRETE	2.00		
SHINGLES	0.44	VINYL SIDING	0.02	3 1/2" BATT	5.00
FELT	0.02	BLDG PAPER	0.02		
1/2" PLYWOOD	0.42	1/2" PLYWOOD	0.02		
AIR SPACE	0.42	1 1/2" BATT	2.00		
1" BATT	30.00	1/2" GYPSUM BD	0.46		
1/2" GYPSUM BD	0.46	AIR FILT.	0.24		
AIR FILT.	0.24				
TOTAL R	32.81	TOTAL R	23.10	TOTAL R	11.00

WINDOWS - DOUBLE INSULATING LOW E GLASS R=3.2 U=0.31
 GLASS DOORS - SLIDERS/ATRM WITH INSULATING GLASS R=3.0 U=0.33
 STEEL INSULATING DOORS R=0.8 U=0.92
 FIBERGLASS INSULATING DOORS R=10 U=0.91



CONVENTIONS

- DOOR DESIGNATOR
- WINDOW DESIGNATOR
- STRUCTURAL MEMBER
- HIDDEN LINE
- REMOVE EXISTING
- HAND WRENCH UNKNOB
- SMOKE DETECTORS
- CARBON MONOXIDE DETECTOR
- GRID LINE
- MECHANICAL DESIGNATOR
- MECHANICAL LETTER
- BLDG. SECTION DESIGNATOR
- WALL LEVEL DESIGNATOR
- LEVEL INDICATOR
- INTERIOR ELEV. NO.
- MECHANICAL AREA
- MECHANICAL CONVENTION

THOMAS J. CISEK ARCHITECT
 25 McCLARY AVE
 AMSTERDAM NY

unauthorized additions or deletions to this document, or to related construction are a violation of ARTICLE 17 of the NEW YORK STATE EDUCATION LAW

project: HAYES OFFICE BUILDING MAPLE AVE EXTENSION TOWN OF AMSTERDAM NY
 date: 11-17-03
 scale: NOTED
 sheet title: FIRST FLOOR PLAN SCHEDULES INTERIOR ELEVATIONS GENERAL NOTES
 dwg no: A-2
 sheet: 1 of 5
 COPYRIGHT 2003 T J CISEK ARCHITECT

Monday, November 17, 2003
 C:\net\cisek\DWG\Hayes\ev.Dwg