

RIDGEWOOD CENTER

33650 6TH AVE S | FEDERAL WAY, WA

FOR LEASE

3,590 SF AVAILABLE










THE ANDOVER
COMPANY, INC.
CORFAC INTERNATIONAL

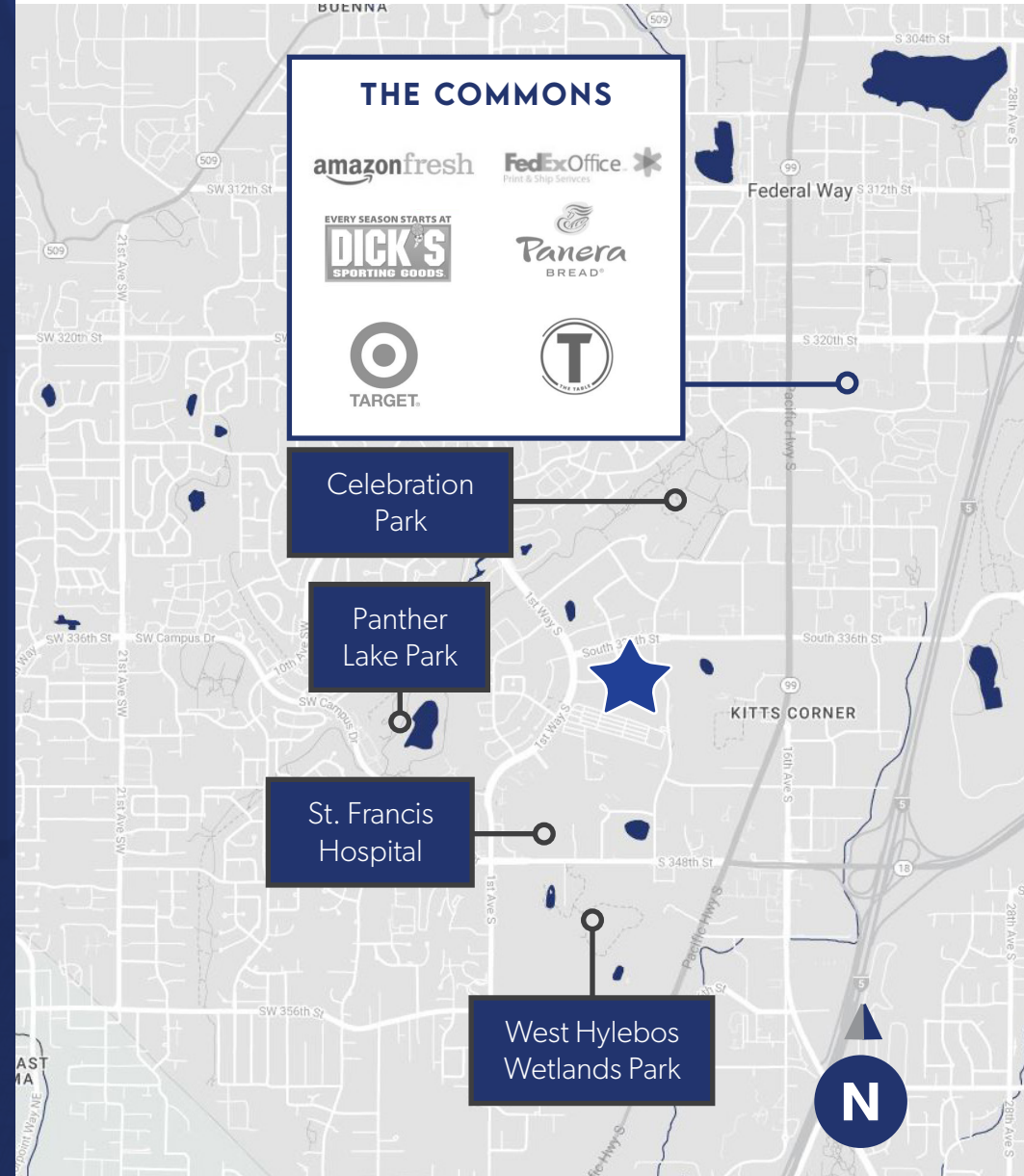
SHANE MAHVI
(206) 336-5338
smahvi@andoverco.com

BRIAN BRUININKS, CCIM
(206) 336-5324
bbruininks@andoverco.com

PROPERTY HIGHLIGHTS

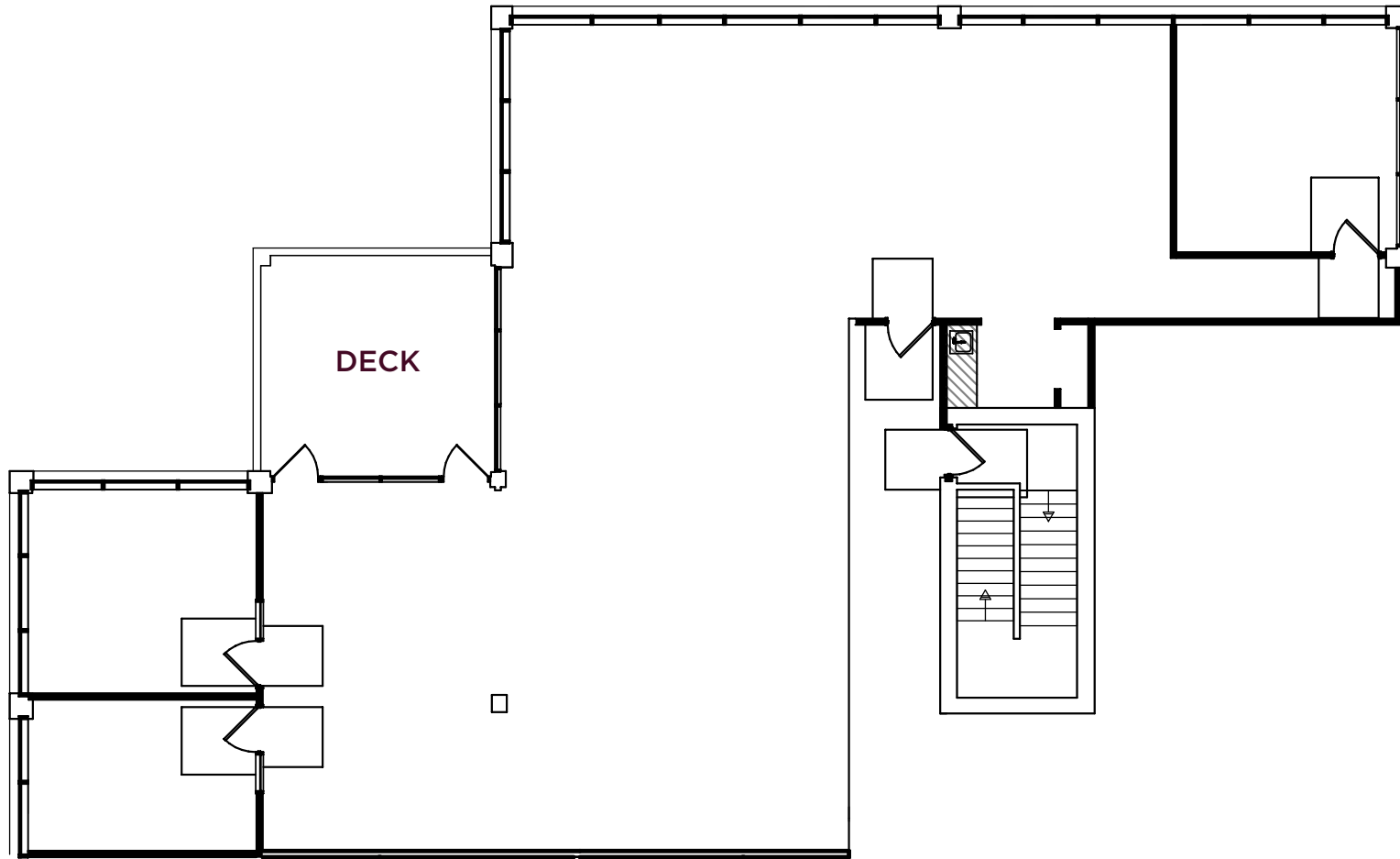
The information contained herein has been obtained from reliable sources, but is not guaranteed. A prospective buyer/tenant should verify each item relating to this property and all information contained herein.

-  AMPLE FREE SURFACE PARKING
-  COVERED PARKING IS FREE AT 1/1,000 RSF
-  CLOSE PROXIMITY TO THE COMMONS SHOPPING MALL & ST. FRANCIS HOSPITAL
-  LOCATED ON MAIN ARTERIAL; I-5 AND S/99
-  PROJECT AMENITIES INCLUDE CONFERENCE ROOM AND FITNESS CENTER
-  STORAGE AVAILABLE
-  INCOMING RENOVATIONS TO LOBBY AND COMMON AREAS



SUITE
210

3,590 SF TOTAL



PROPERTY PHOTOS

