



FOR LEASE

1313 Hewitt Ave, Everett, WA 98201

Retail space available in a prime location with high visibility for lease in charming downtown Everett.

Property Highlights

1,782 sf to 5,484 sf available

Base rent: Upon Request

NNN rate: \$5/SF

Ample Street Parking

Tall Ceilings

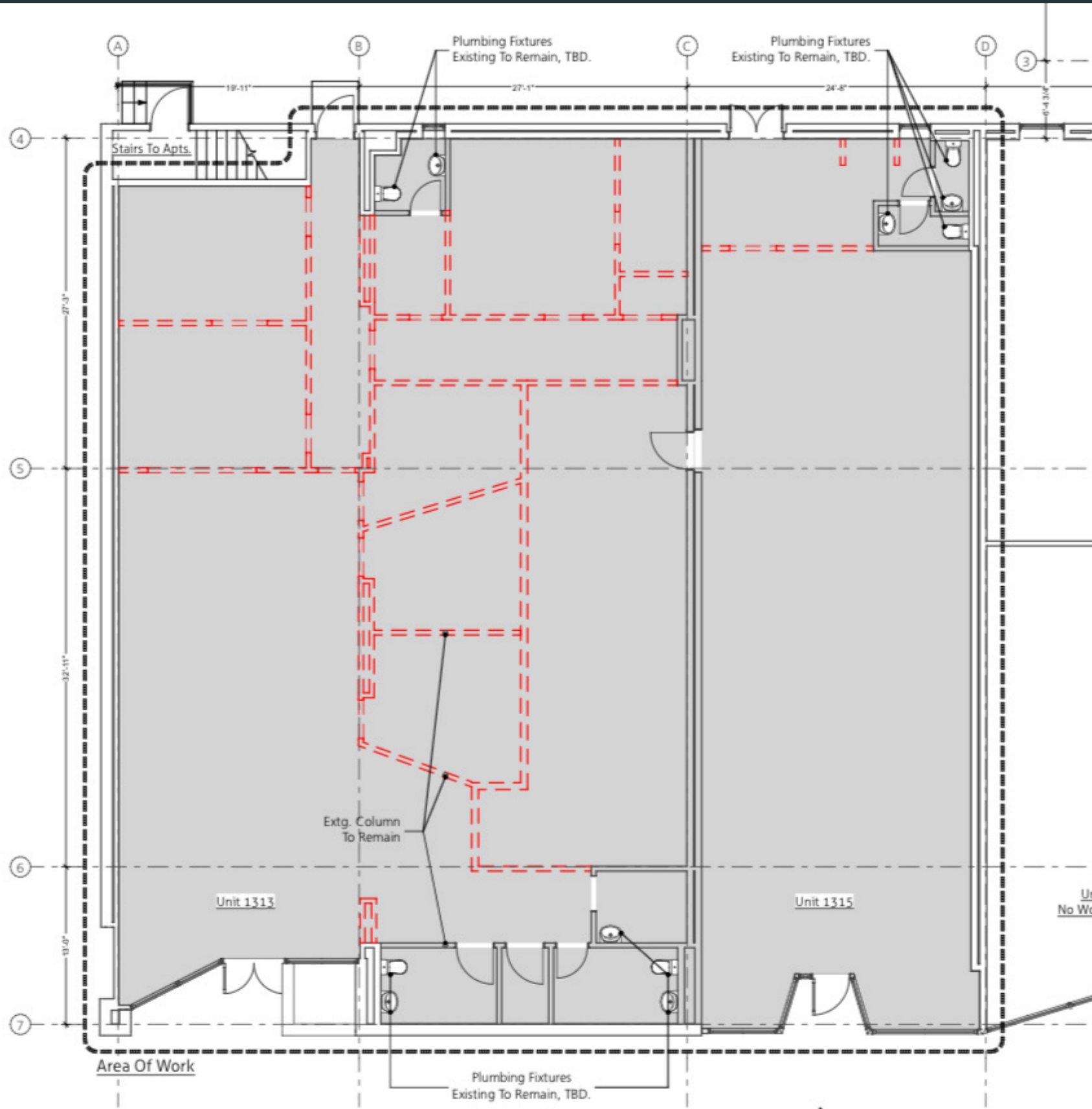
Large Windows

Just Renovated

Located in the heart of downtown
Everett



Floor Plan



3,642 SF

Unit 1313

1,782 SF

Unit 1315

5,424

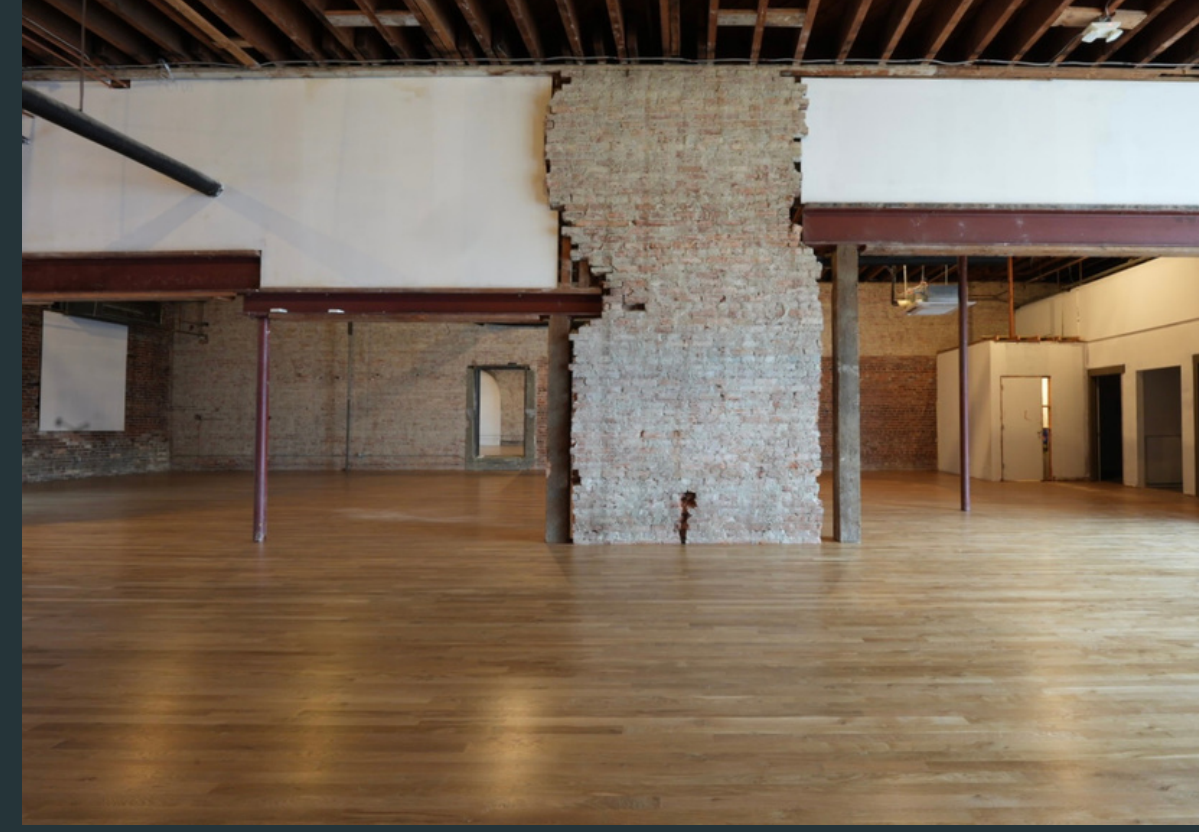
Total Available

Demographics

	Avg. H.H. Income	Population
5 Minutes	\$78,349	35,841
10 Minutes	\$85,454	78,726
15 Minutes	\$91,626	206,557

Everett WA

Everett, Washington, as the largest city in Snohomish County, boasts a diverse community of over 110,000 residents. Nestled 25 miles north of Seattle between Port Gardner Bay and the Snohomish River, Everett offers a city experience without the hustle of larger urban centers.



Please contact us for more information and to schedule a viewing

Todd Sims

310.429.3700

todd@lightspaceshadow.com

Salina Hernandez

951.500.8079

salina@lightspaceshadow.com

Jae Evans

425.890.9754

jae@jaeevans.com

The details provided here come from sources we consider trustworthy. However, this is given without any explicit or implicit assurance, warranty, or guarantee regarding its correctness. We advise prospective buyers or tenants to independently investigate and verify any material matters, which includes, but is not limited to, statements regarding income and expenses. It's recommended to seek advice from your lawyer, accountant, or another qualified professional.