



**COMMERCIAL REAL ESTATE**

OFFICE BUILDING FOR LEASE



**1611 Jaydell Circle**  
Tallahassee, FL 32308

**LEWIS BUFORD**  
Partner/Broker  
850.591.6363  
lewis@tlgproperty.com

**TLG REAL ESTATE SERVICES**  
3520 Thomasville Road, Suite 200  
Tallahassee, FL 32309  
O: 850.385.6363



EXECUTIVE SUMMARY  
**1611 JAYDELL CIRCLE**  
 TALLAHASSEE, FL 32308



### OFFERING SUMMARY

<b>Available SF:</b>	3,000 - 9,000 SF
<b>Lease Rate:</b>	\$16 SF/yr (NNN)
<b>Lot Size:</b>	1.02 Acres
<b>Year Built:</b>	1991
<b>Building Size:</b>	9,000 SF
<b>Zoning:</b>	CP
<b>APN:</b>	1128200760000

### PROPERTY OVERVIEW

Offered for Lease. \$16.00 (NNN)  
 Available Dec. 1, 2026

### LOCATION OVERVIEW

Located off Jaydell Cir, just north of Mahan Dr near the Capital Circle NE intersection, this finished office space is in a well established commercial corridor. Surrounding area includes mostly office, service, or retail users.

[Click Here for Zoning Information](#)

**Lewis Buford**  
 850.591.6363  
 lewis@tlgproperty.com

**TLG REAL ESTATE SERVICES**  
 3520 Thomasville Road, Suite 200, Tallahassee, FL 32309  
 850.385.6363

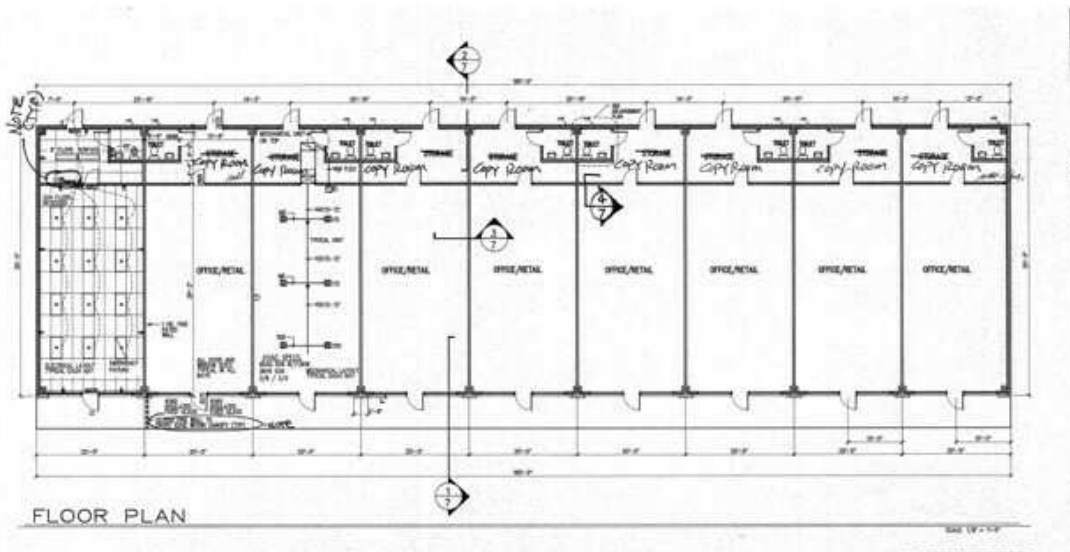
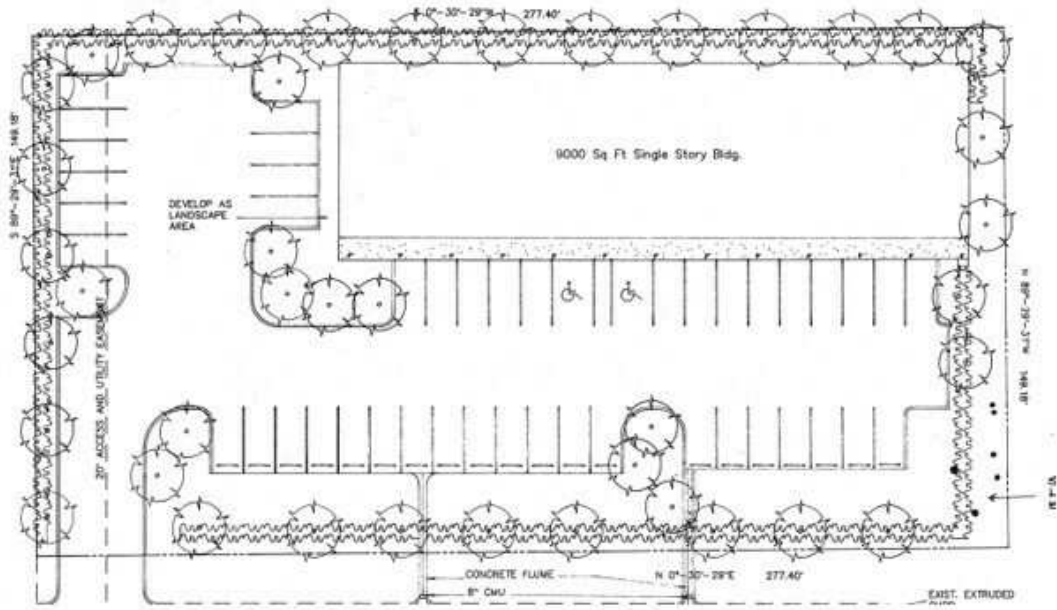




# ADDITIONAL PHOTOS

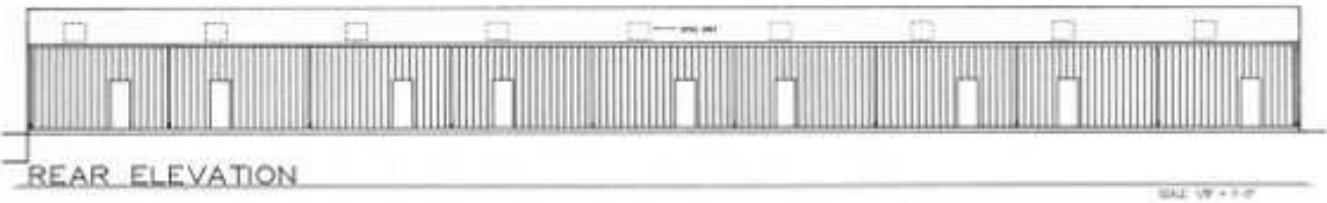
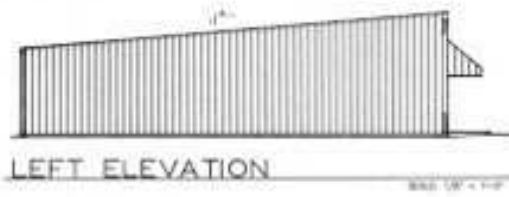
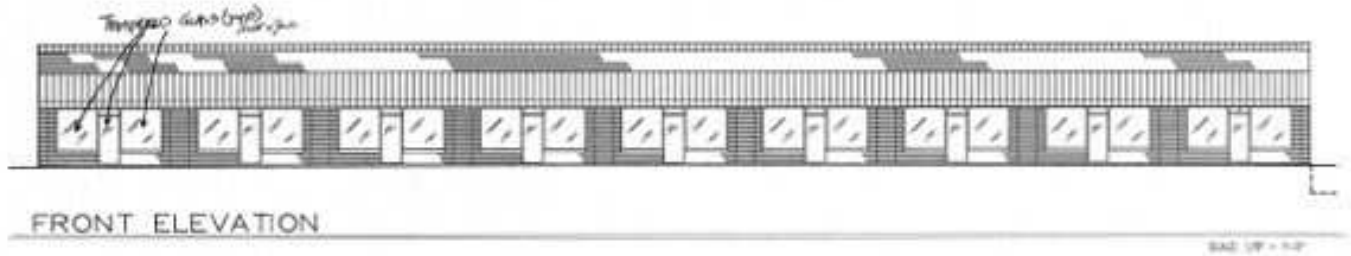
## 1611 JAYDELL CIRCLE

TALLAHASSEE, FL 32308





ADDITIONAL PHOTOS  
**1611 JAYDELL CIRCLE**  
TALLAHASSEE, FL 32308



**Lewis Buford**  
850.591.6363  
lewis@tlgproperty.com

**TLG REAL ESTATE SERVICES**  
3520 Thomasville Road, Suite 200, Tallahassee, FL 32309  
850.385.6363





ADDITIONAL PHOTOS  
**1611 JAYDELL CIRCLE**  
TALLAHASSEE, FL 32308



**Lewis Buford**  
850.591.6363  
lewis@tlgproperty.com

**TLG REAL ESTATE SERVICES**  
3520 Thomasville Road, Suite 200, Tallahassee, FL 32309  
850.385.6363





RETAILER MAP  
1611 JAYDELL CIRCLE  
TALLAHASSEE, FL 32308



Lewis Buford  
850.591.6363  
lewis@tlgproperty.com

TLG REAL ESTATE SERVICES  
3520 Thomasville Road, Suite 200, Tallahassee, FL 32309  
850.385.6363

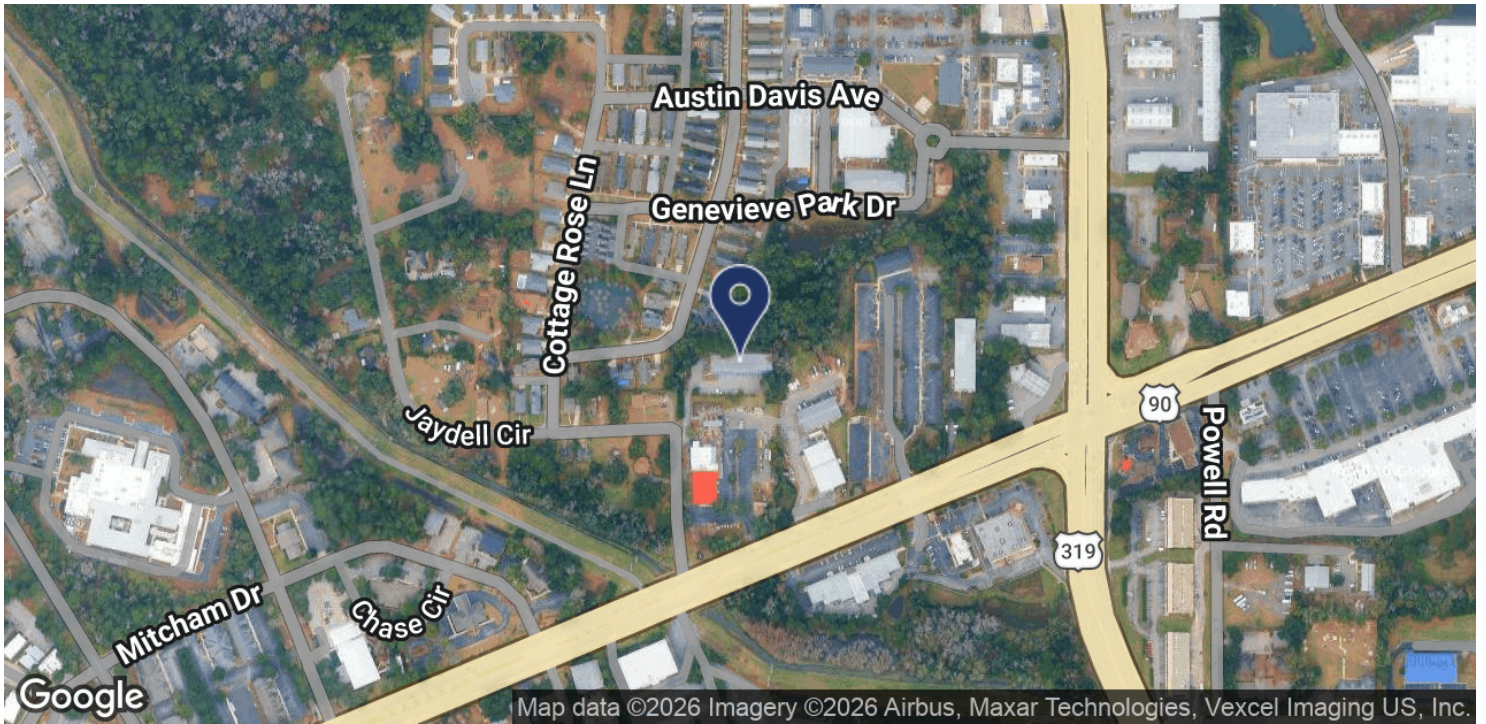




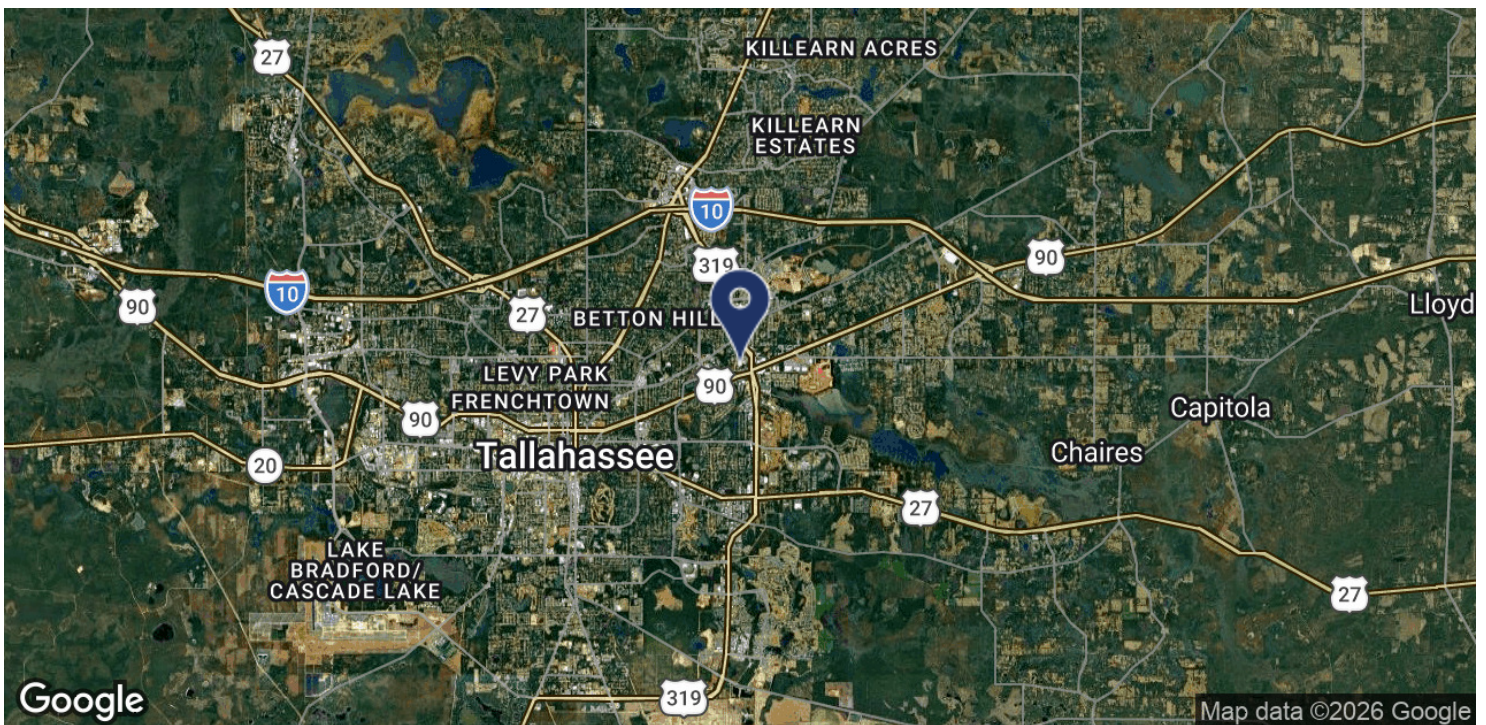
LOCATION MAP

# 1611 JAYDELL CIRCLE

TALLAHASSEE, FL 32308



Map data ©2026 Imagery ©2026 Airbus, Maxar Technologies, Vexcel Imaging US, Inc.



Map data ©2026 Google

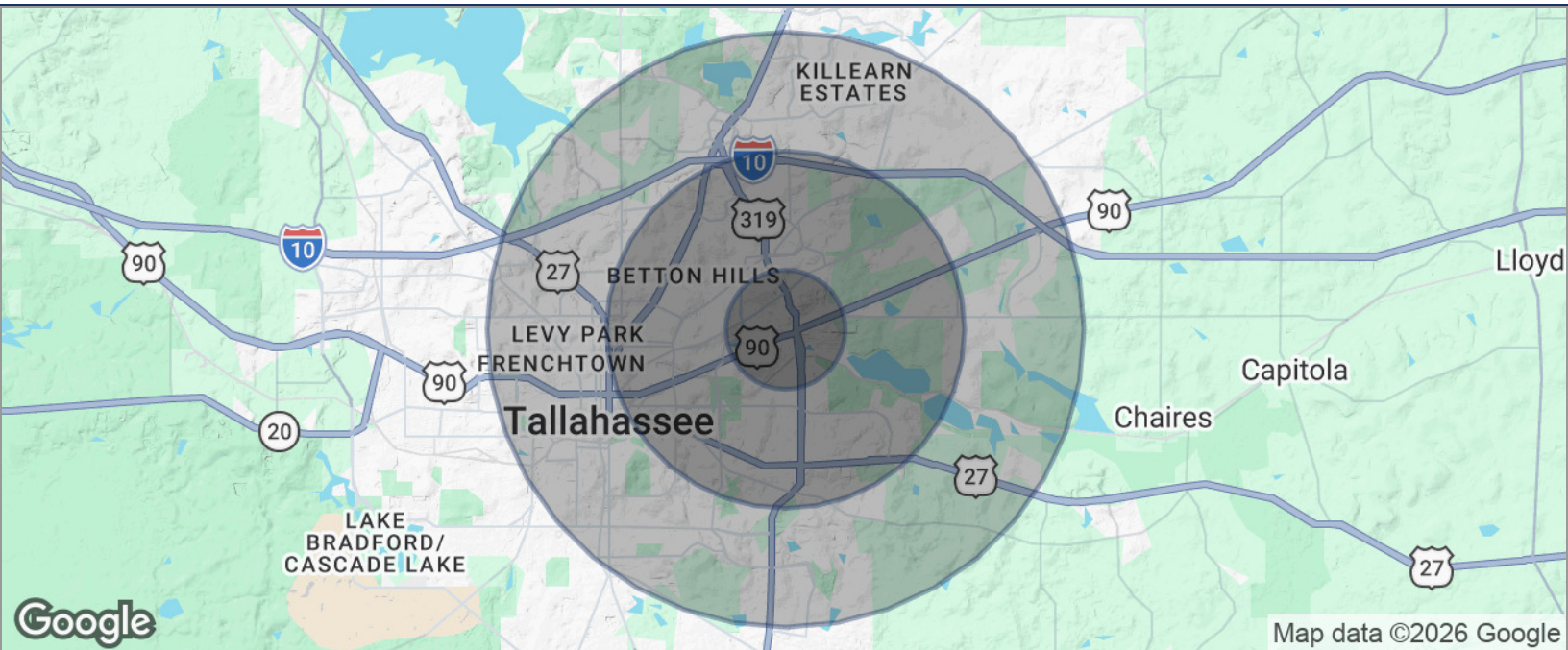
**Lewis Buford**  
850.591.6363  
lewis@tlgproperty.com

**TLG REAL ESTATE SERVICES**  
3520 Thomasville Road, Suite 200, Tallahassee, FL 32309  
850.385.6363





DEMOGRAPHICS MAP  
**1611 JAYDELL CIRCLE**  
 TALLAHASSEE, FL 32308



<b>POPULATION</b>	<b>1 MILE</b>	<b>3 MILES</b>	<b>5 MILES</b>
TOTAL POPULATION	6,682	52,747	147,289
MEDIAN AGE	40.8	39.1	34.5
MEDIAN AGE (MALE)	39.2	37.5	33.0
MEDIAN AGE (FEMALE)	43.2	40.9	36.6
<b>HOUSEHOLDS &amp; INCOME</b>	<b>1 MILE</b>	<b>3 MILES</b>	<b>5 MILES</b>
TOTAL HOUSEHOLDS	3,241	25,268	60,968
# OF PERSONS PER HH	2.1	2.1	2.4
AVERAGE HH INCOME	\$84,088	\$103,637	\$92,615
AVERAGE HOUSE VALUE	\$259,409	\$302,788	\$311,727

\* Demographic data derived from 2020 ACS - US Census

**Lewis Buford**  
 850.591.6363  
 lewis@tlgproperty.com

**TLG REAL ESTATE SERVICES**  
 3520 Thomasville Road, Suite 200, Tallahassee, FL 32309  
 850.385.6363

