

1710

**RHODE
ISLAND**

2,983 SF
FLOOR PLATES

OFFERS A UNIQUE
OPPORTUNITY
FOR SMALL FIRMS
TO HAVE FULL
CONTROL OF
FLOOR



**CUSHMAN &
WAKEFIELD**



24/7 HVAC CAPABILITIES

TENANT CONTROLLED HVAC 24/7 — One Of DC's Only Buildings With No Overtime Hvac Cost



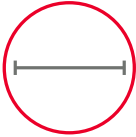
NEW

LOUNGE & CONFERENCE CENTER



NEWLY RENOVATED

LOBBY



FULL FLOOR SPEC SUITES

AVAILABLE



LOCATION

CENTRAL BUSINESS DISTRICT



IDEAL FLOORPLATES

FOR SINGLE TENANT TO HAVE FULL CONTROL OF FLOOR

AVAILABILITIES

LEVEL 2	3,870 RSF	\$46.00 FULL SERVICE	OFFICE
LEVEL 4	2,983 RSF	\$46.00 FULL SERVICE	OFFICE
LEVEL 5 (SPEC)	2,983 RSF	\$46.00 FULL SERVICE	OFFICE
LEVEL 6 (SHELL)	2,983 RSF	\$46.00 FULL SERVICE	OFFICE
LEVEL 8	2,983 RSF	\$46.00 FULL SERVICE	OFFICE
LEVEL 10	2,983 RSF	\$46.00 FULL SERVICE	OFFICE
LEVEL 11	2,983 RSF	\$46.00 FULL SERVICE	OFFICE
LEVEL 12/13	5,966 RSF	\$46.00 FULL SERVICE	OFFICE



VIEW



VIEW



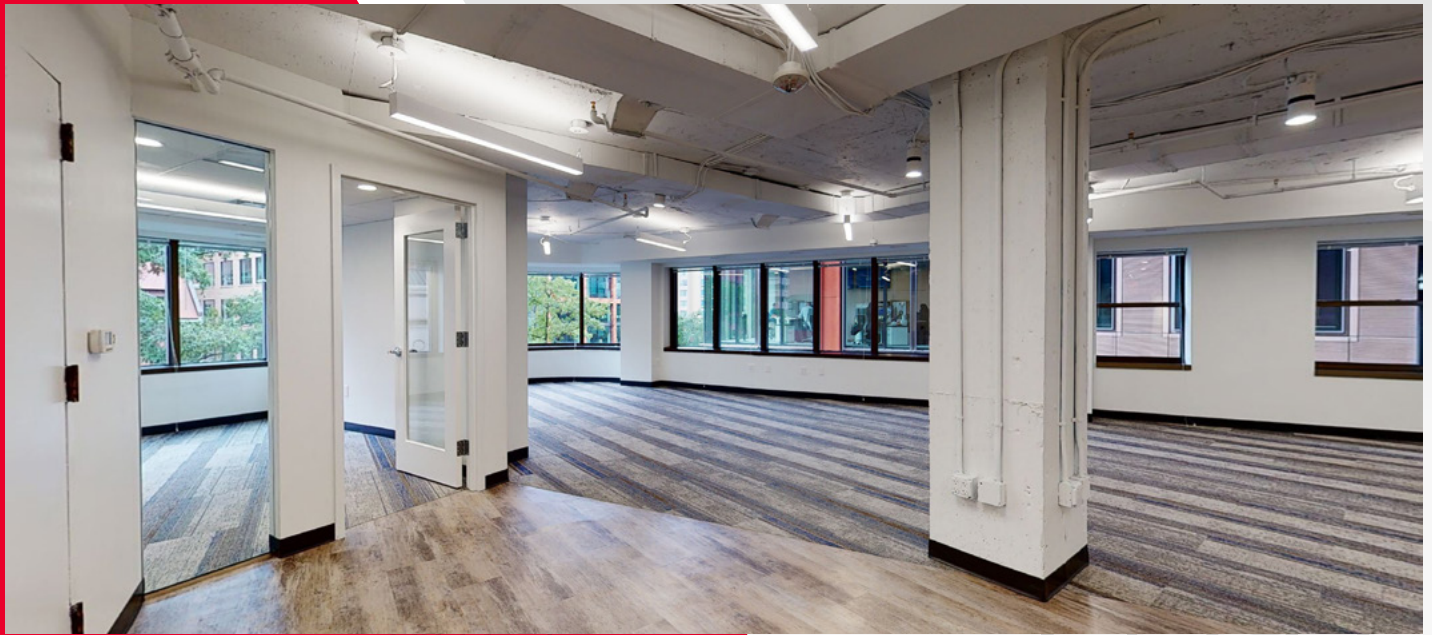
VIEW



LOBBY



CONFERENCE CENTER & LOUNGE

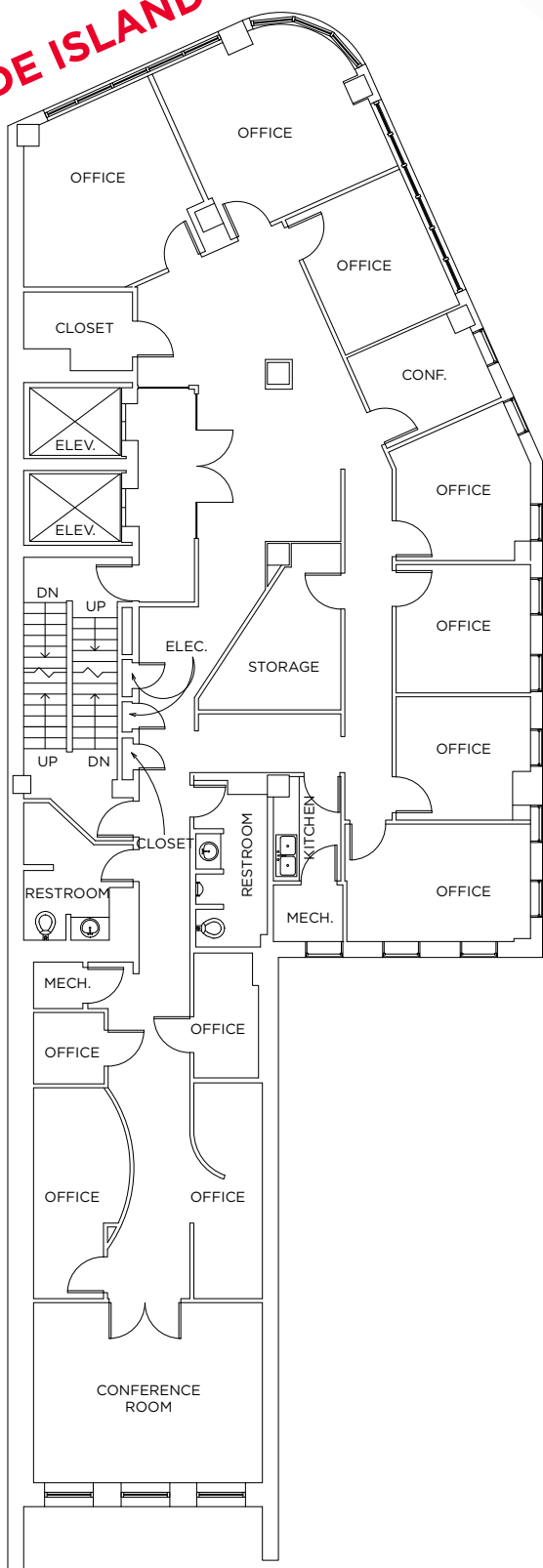


EXAMPLE OF NEW BUILDING STANDARD FINISHES

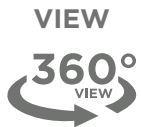
2ND FLOOR

3,870 SF

RHODE ISLAND AVE



\$46.00
FULL SERVICE



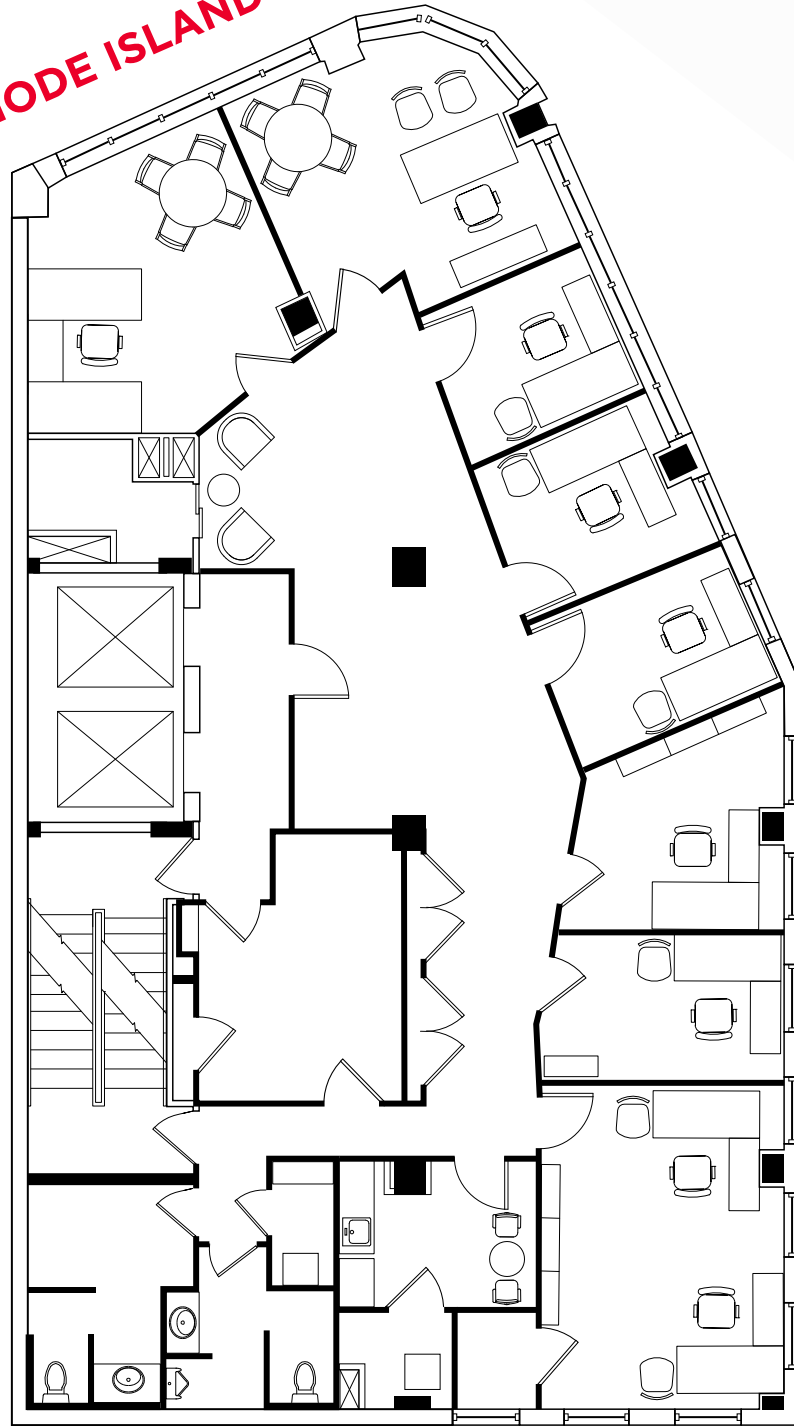
TOUR OF NEW BUILDING
STANDARD SUITE



4TH FLOOR

2,983 SF

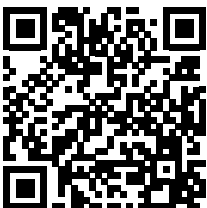
RHODE ISLAND AVE



\$46.00
FULL SERVICE



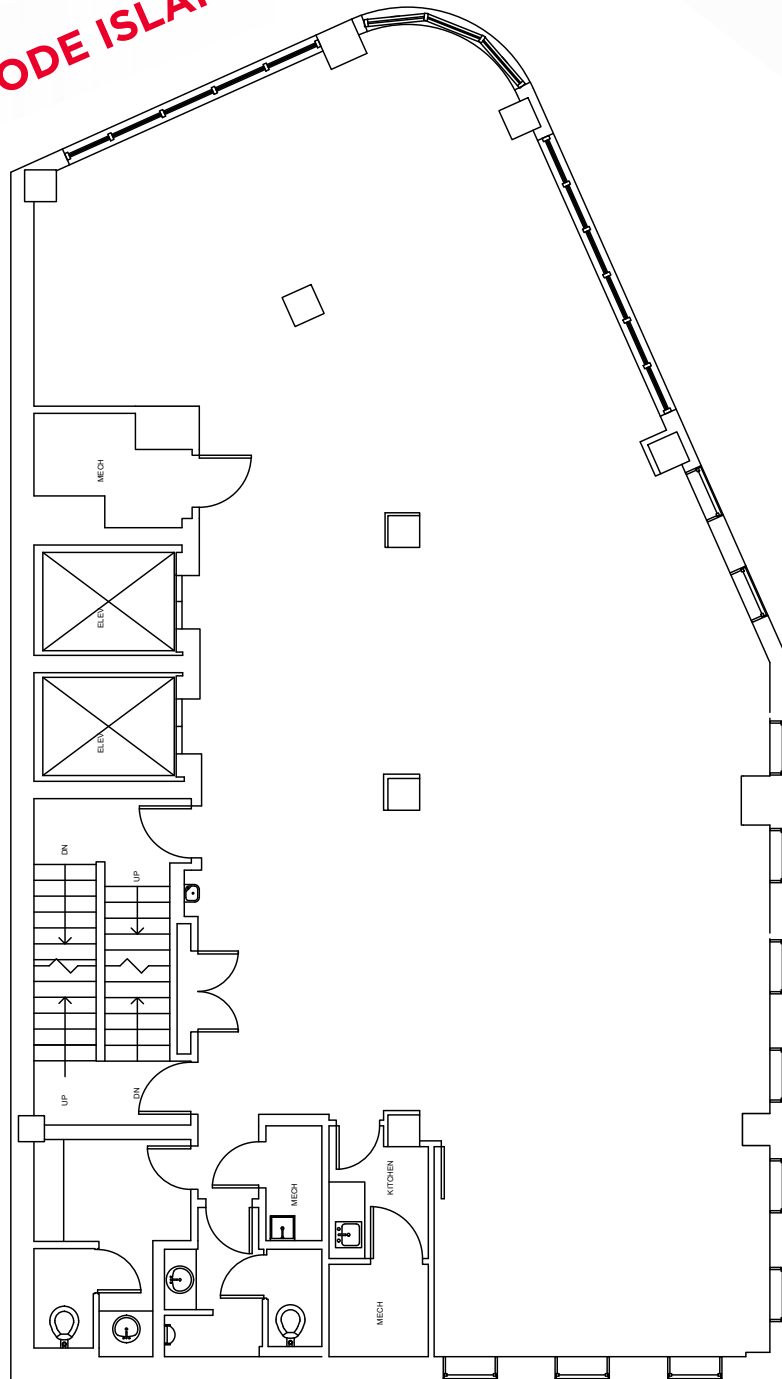
TOUR OF NEW BUILDING
STANDARD SUITE



6TH FLOOR (SHELL)

2,983 SF

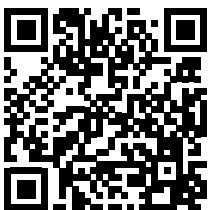
RHODE ISLAND AVE



\$46.00
FULL SERVICE



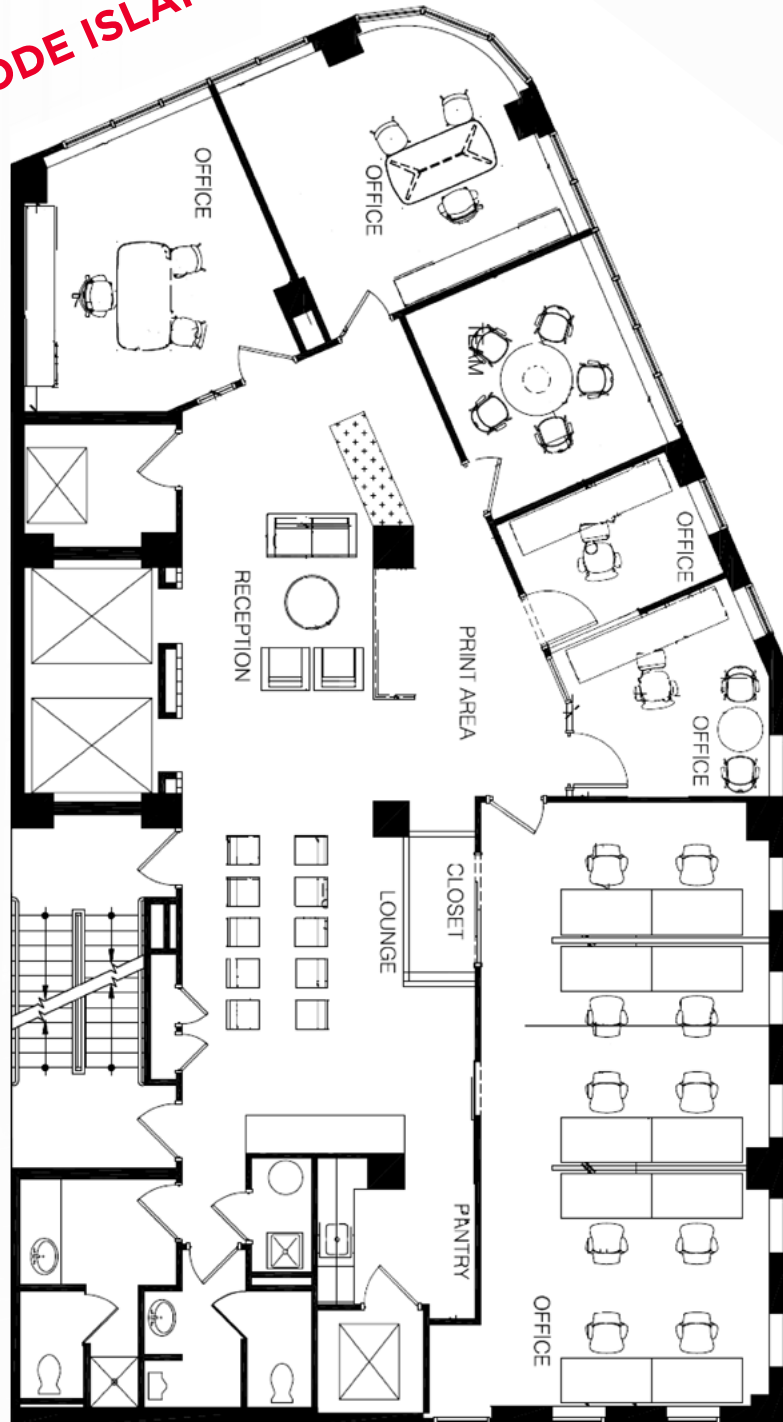
TOUR OF NEW BUILDING
STANDARD SUITE



8TH FLOOR

2,983 SF

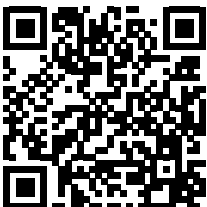
RHODE ISLAND AVE



\$46.00
FULL SERVICE



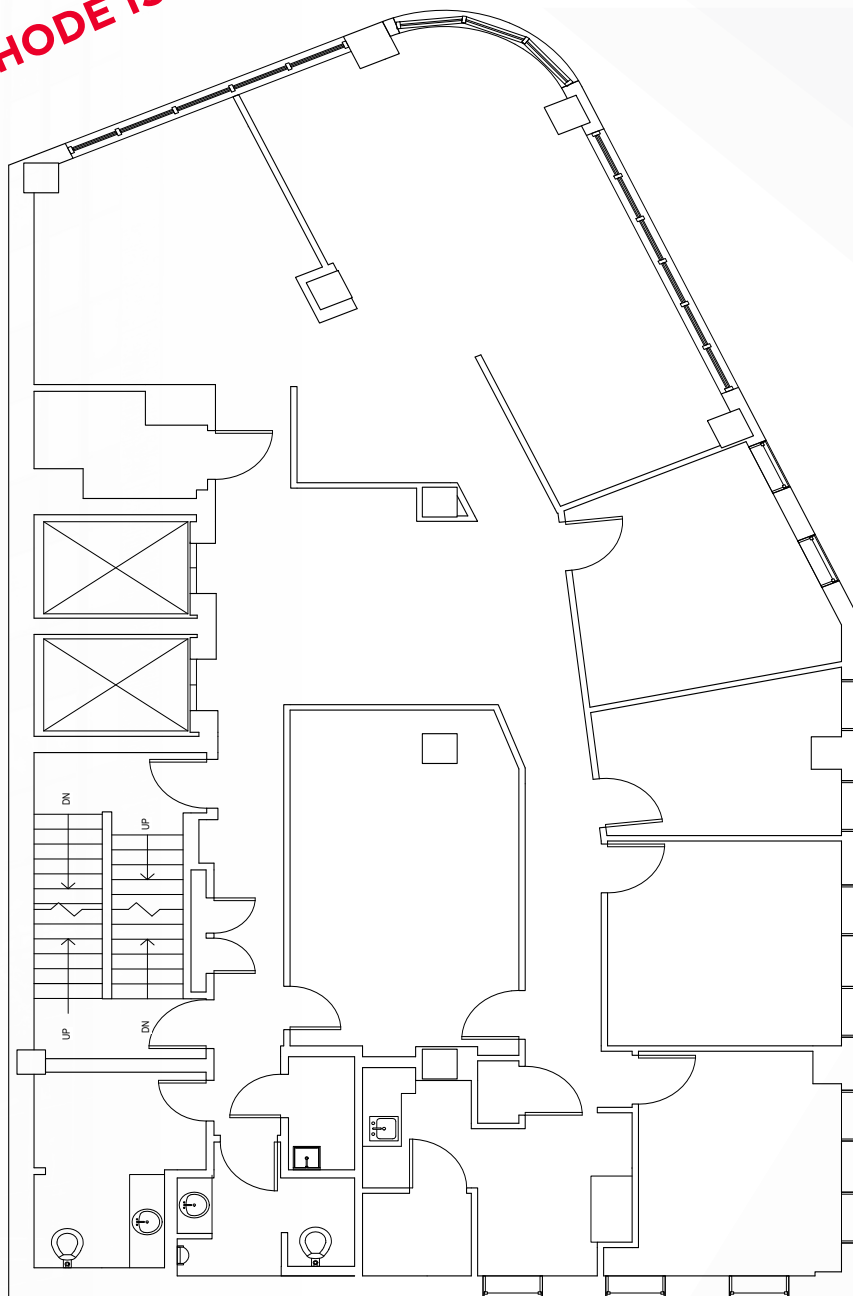
TOUR OF NEW BUILDING
STANDARD SUITE



10TH FLOOR

2,983 SF

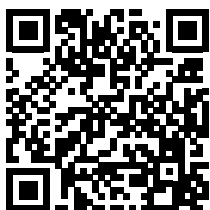
RHODE ISLAND AVE



\$46.00
FULL SERVICE



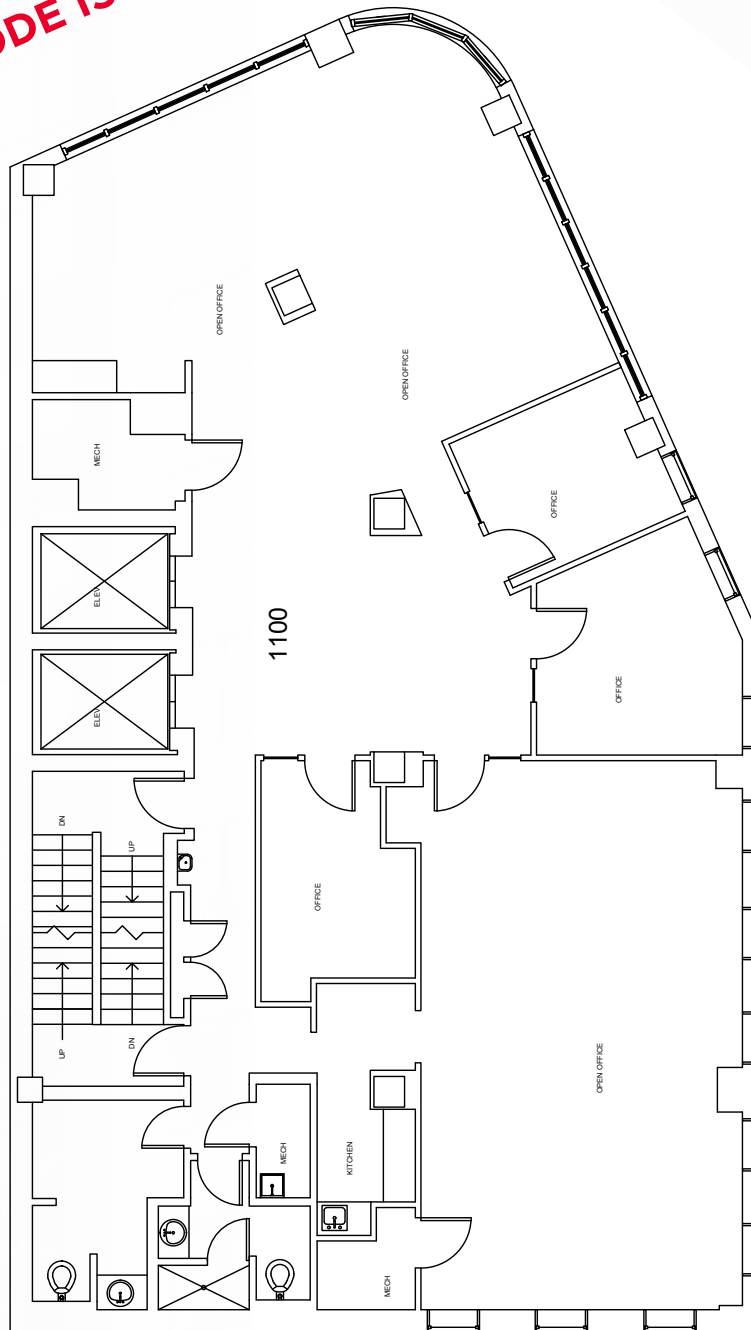
TOUR OF NEW BUILDING
STANDARD SUITE



11TH FLOOR

2,983 SF

RHODE ISLAND AVE



\$46.00
FULL SERVICE



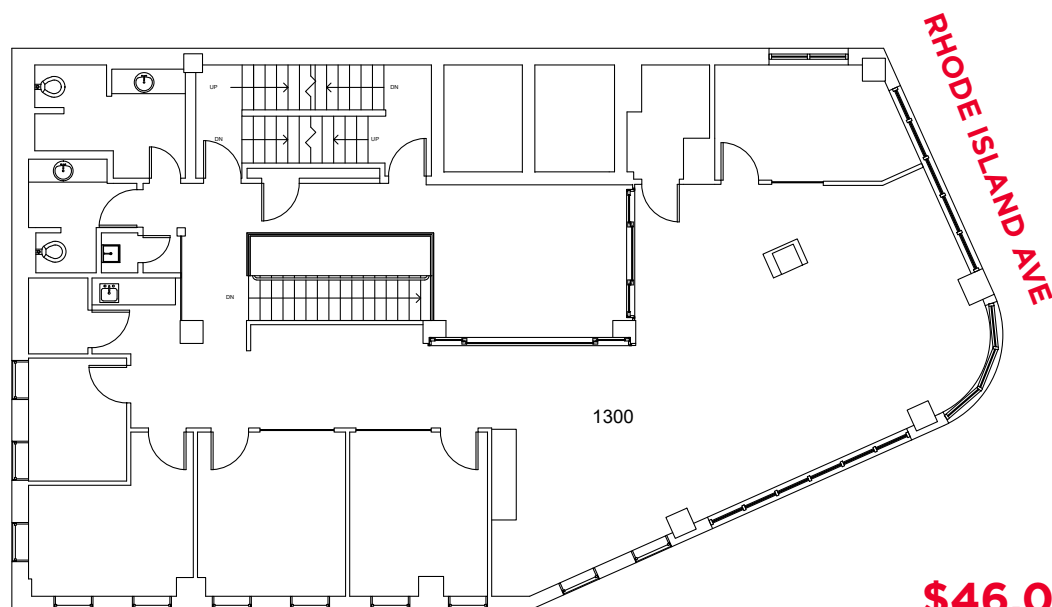
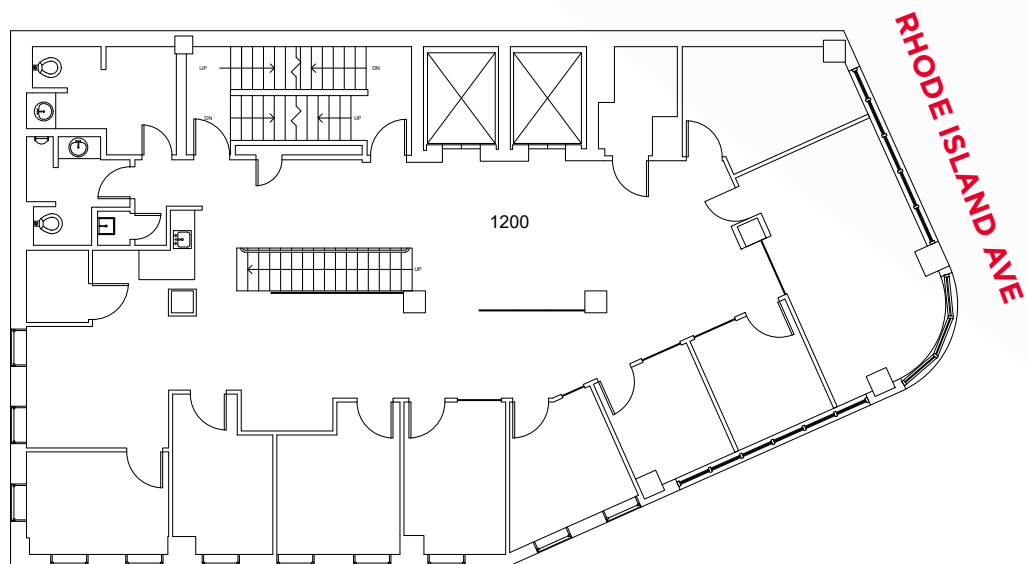
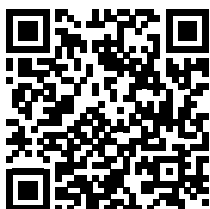
TOUR OF NEW BUILDING
STANDARD SUITE



12TH / 13TH FLOOR

5,966 SF

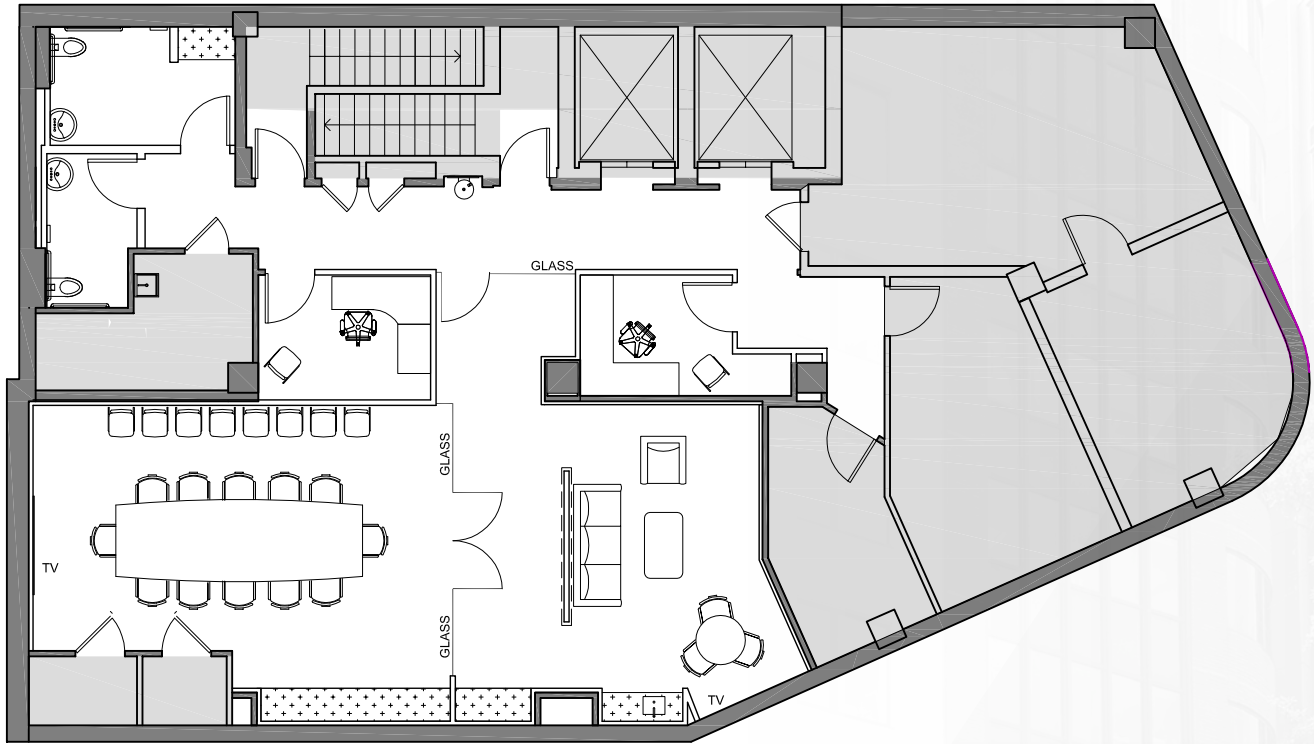
VIEW
360°
VIEW
TOUR



\$46.00
FULL SERVICE



NEWLY RENOVATED LOBBY, CONFERENCE CENTER, AND LOUNGE





**FOR MORE
INFORMATION
PLEASE CONTACT**

BRUCE PASCAL

bruce.pascal@cushwake.com

+1 202 463 1357

KYLE MCFADDEN

kyle.mcfadden@cushwake.com

+1 202 739 0362

1710

**RHODE
ISLAND**