



Colliers

Available
For Lease

John Carpin

Senior Vice President
+1 804 267 7216
john.carpin@colliers.com

Catherine Walker

Associate Vice President
+1 804 968 1978
catherine.walker@colliers.com

2221 Edward Holland Dr
Suite 600 | Richmond, VA
P: +1 804 320 5500
colliers.com/richmond

Center Park I

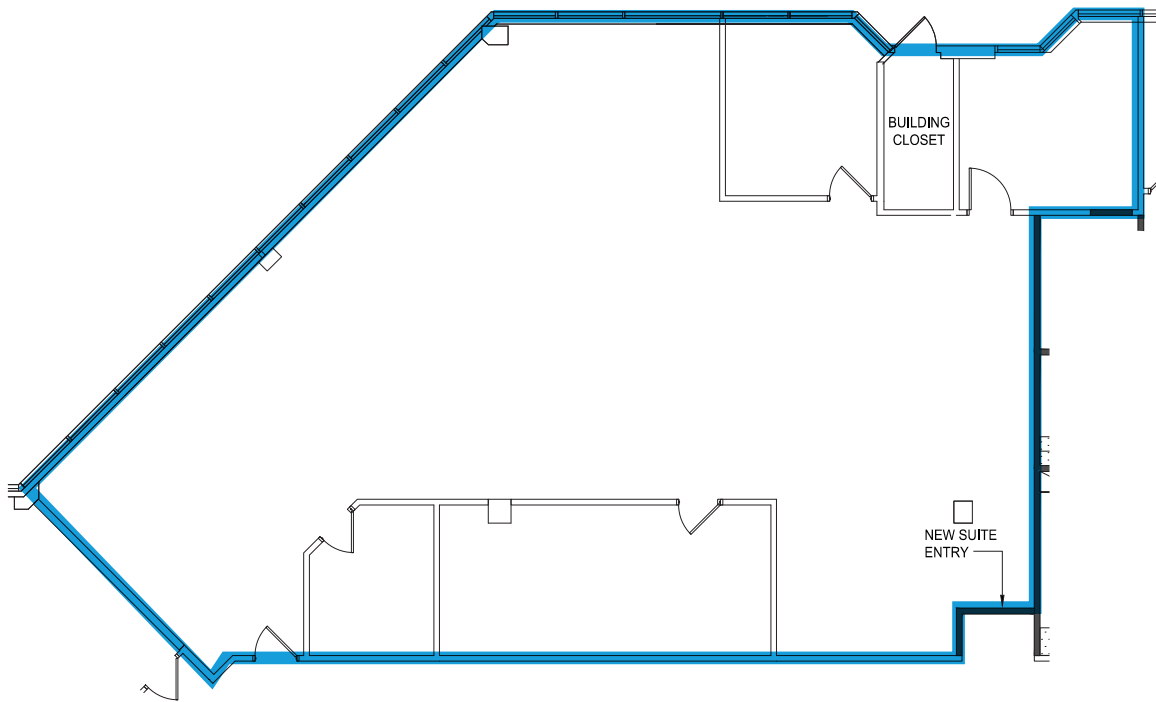
4315-4329 Cox Rd, Glen Allen, VA 23060

- 14,436 SF single-story office building in the heart of Innsbrook Corporate Center
- Available Suites
 - 4323: 2,361 RSF (available 5/1/26)
 - 4327: 2,988 RSF
- Renovated common areas
- 4/1,000 SF parking
- Signalized intersection at Center Park entrance
- Easy access to I-64, I-288 and US 250 as well as numerous retail, lodging, restaurant, and hotel options
- Innsbrook features 850 acres with 5 million square feet of office space with walking/jogging trails and 3 lakes
- Owned by Lingerfelt and professionally managed by Commonwealth Commercial

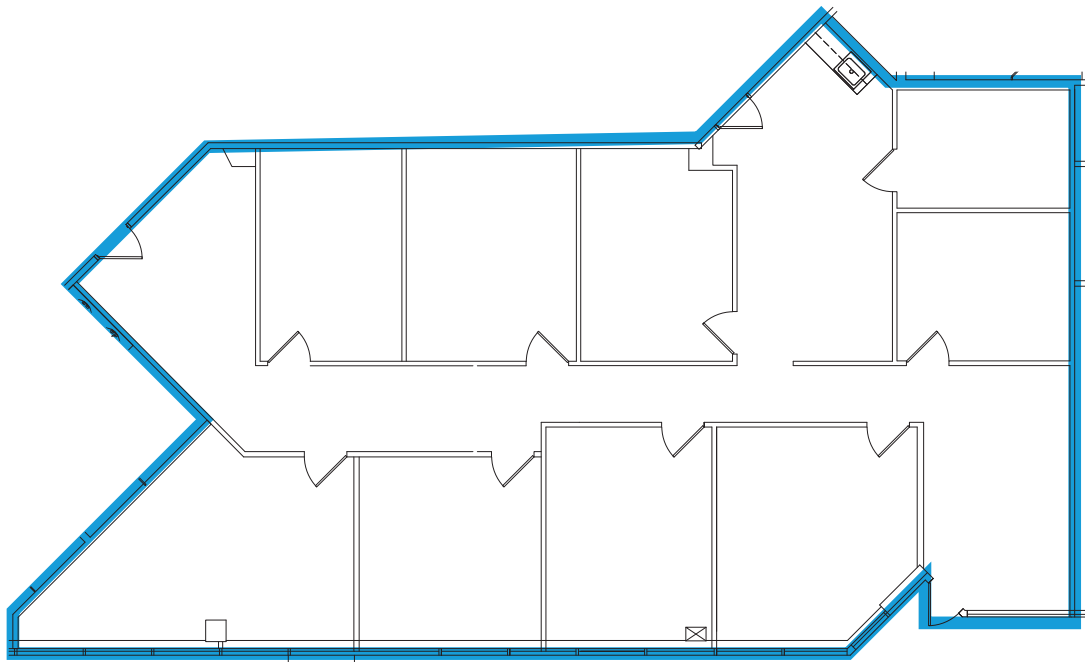
Center Park I

Available Suites

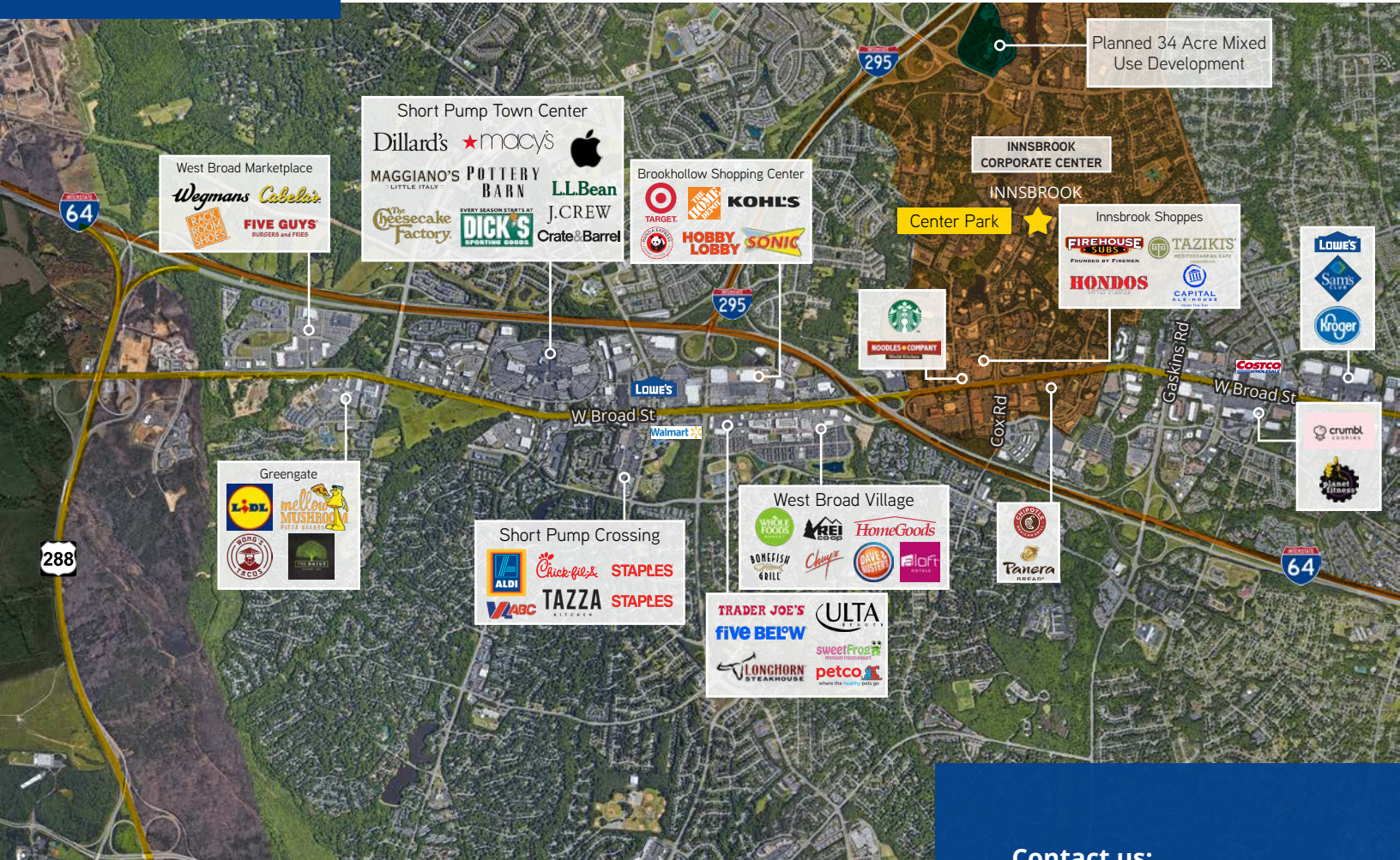
Suite 4327: 2,988 RSF



Suite 4323: 2,361 RSF



Center Park I



Contact us:

John Carpin

Senior Vice President
+1 804 267 7216
john.carpin@colliers.com

Catherine Walker

Associate Vice President
+1 804 968 1978
catherine.walker@colliers.com

Colliers

2221 Edward Holland Dr
Suite 600 | Richmond, VA
P: +1 804 320 5500