

158 APEX DR

JEFFERSON, GA
30549

For Lease
8,000+/- SF
Truck Service Facility
on 2.9+/- Acres

ANDREW JOHNSON

Vice President

404.942.2029

ajohnson@kingindustrial.com

BRYAN MARSHBURN, SIOR, CCIM

Senior Vice President

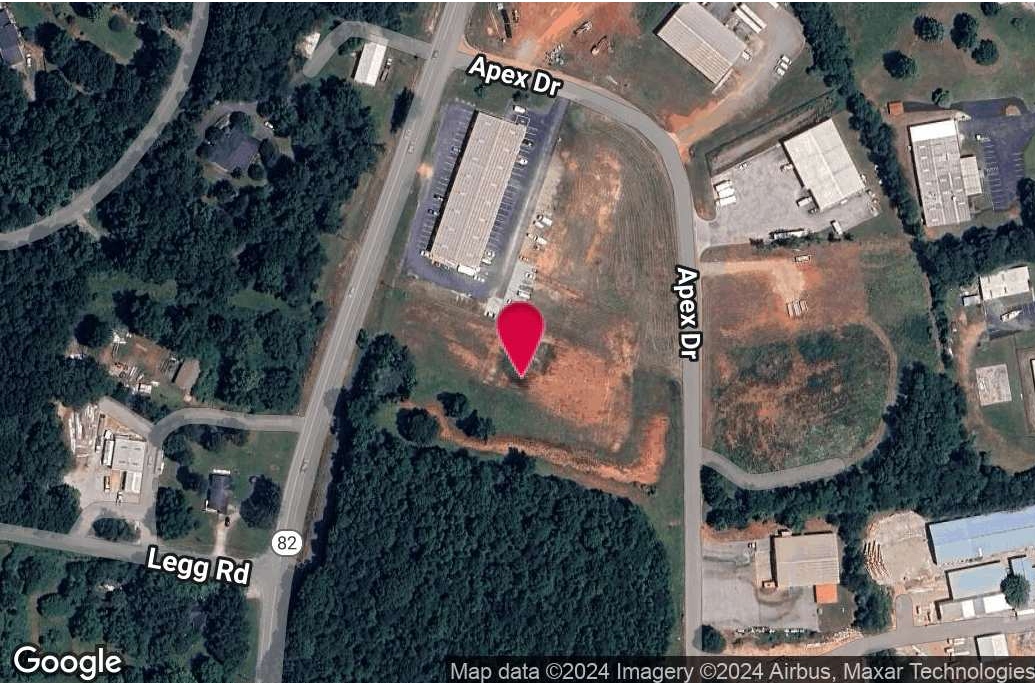
404.942.2044

bmarshburn@kingindustrial.com

King Industrial
Realty, Inc.

Industrial • Commercial • Investment
404.942.2000 | kingindustrial.com

8,000+/-SF TRUCK SERVICE FACILITY



PROPERTY HIGHLIGHTS

- 5-16' High Roll-Up Doors
- Loading Dock
- 1,300+/-SF Fully Air Conditioned Office
- 3 Miles from Exit 140, I-85
- Detention Pond
- Estimated Delivery - October, 2024

OFFERING SUMMARY

Lot Size:	2.91 Acres
Building Size:	8,000 SF
Zoning:	LI

ANDREW JOHNSON

Vice President

404.942.2029

ajohnson@kingindustrial.com

Every effort has been made to provide accurate information, but no liability is assumed for errors or omissions.

BRYAN MARSHBURN, SIOR, CCIM

Senior Vice President

404.942.2044

bmarshburn@kingindustrial.com



Industrial • Commercial • Investment
404.942.2000 | kingindustrial.com

ADDITIONAL PHOTOS



ANDREW JOHNSON

Vice President

404.942.2029

ajohnson@kingindustrial.com

BRYAN MARSHBURN, SIOR, CCIM

Senior Vice President

404.942.2044

bmarshburn@kingindustrial.com

Every effort has been made to provide accurate information, but no liability is assumed for errors or omissions.

King Industrial
Realty, Inc. **CORFAC**
INTERNATIONAL

Industrial • Commercial • Investment
404.942.2000 | kingindustrial.com

ADDITIONAL PHOTOS



ANDREW JOHNSON

Vice President

404.942.2029

ajohnson@kingindustrial.com

Every effort has been made to provide accurate information, but no liability is assumed for errors or omissions.

BRYAN MARSHBURN, SIOR, CCIM

Senior Vice President

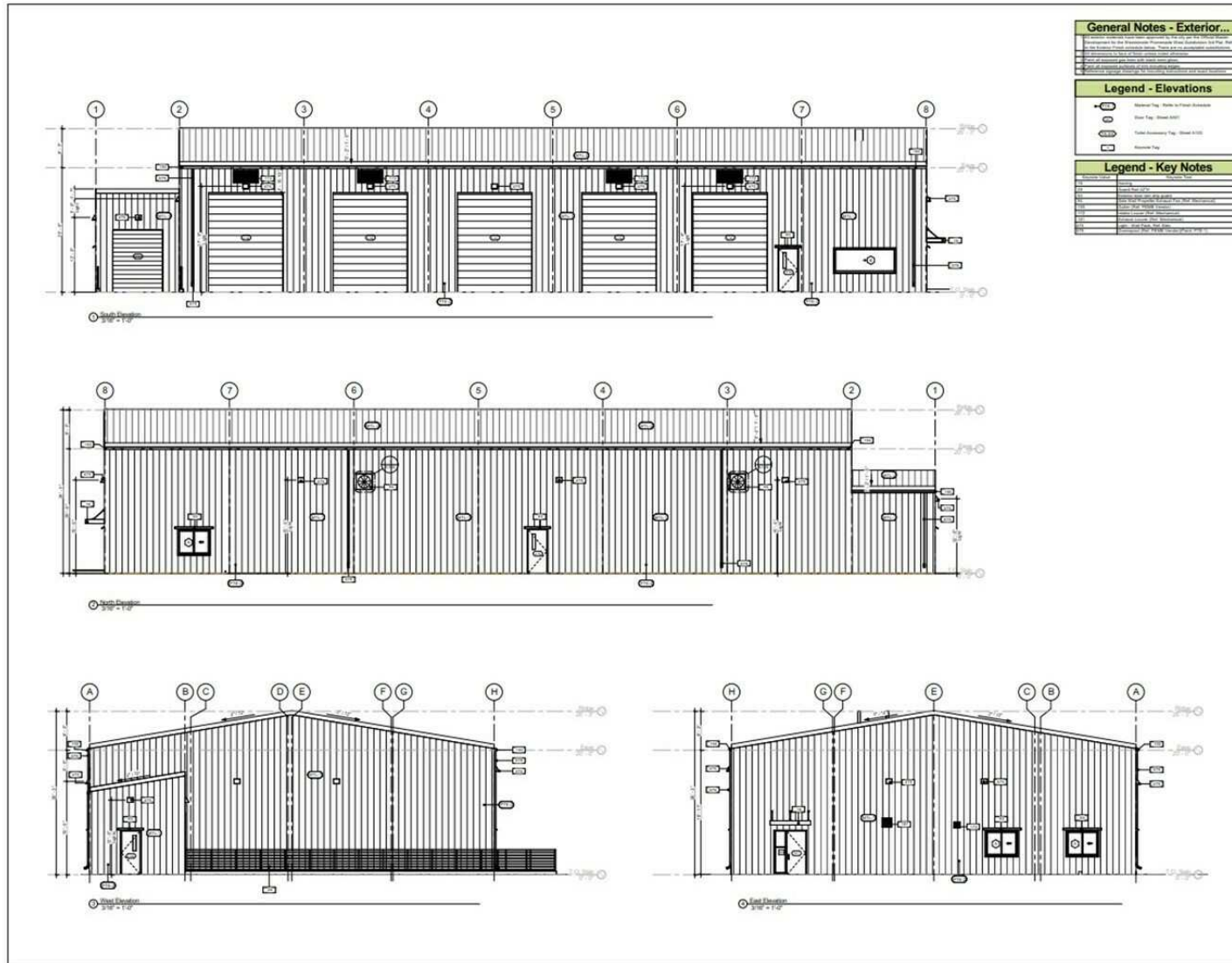
404.942.2044

bmarshburn@kingindustrial.com

King Industrial
Realty, Inc. **CORFAC**
INTERNATIONAL

Industrial • Commercial • Investment
404.942.2000 | kingindustrial.com

BUILDING ELEVATION



PIRILL CONSULTING
 PIRILL CONSULTING (SAS) LLC
 1000 Peachtree St. NE
 Atlanta, GA 30309
 www.pirillconsulting.com

Truck Steel Garage
 138 Apple Dr.
 Jefferson, GA 30548

Client:
 SIOB LLC
 1000 Peachtree St.
 Peachtree, GA 30309
 404.942.2000
 www.sioblob.com

Architect:
 PIRILL CONSULTING LLC
 1000 Peachtree St.
 Peachtree, GA 30309
 404.942.2000
 www.pirillconsulting.com

Structural Engineer:
 SIOB LLC
 1000 Peachtree St.
 Peachtree, GA 30309
 404.942.2000
 www.sioblob.com

General Notes:
 1. See General Notes to Plans.
 2. See General Notes to Plans.
 3. See General Notes to Plans.
 4. See General Notes to Plans.
 5. See General Notes to Plans.
 6. See General Notes to Plans.
 7. See General Notes to Plans.
 8. See General Notes to Plans.
 9. See General Notes to Plans.
 10. See General Notes to Plans.

End Notes:
 1. See General Notes to Plans.
 2. See General Notes to Plans.
 3. See General Notes to Plans.
 4. See General Notes to Plans.
 5. See General Notes to Plans.
 6. See General Notes to Plans.
 7. See General Notes to Plans.
 8. See General Notes to Plans.
 9. See General Notes to Plans.
 10. See General Notes to Plans.



No.	Description	Date
1	Issue for Review	08/14/2018
2	Issue for Construction	08/14/2018
3	Issue for Construction	08/14/2018
4	Issue for Construction	08/14/2018
5	Issue for Construction	08/14/2018
6	Issue for Construction	08/14/2018
7	Issue for Construction	08/14/2018
8	Issue for Construction	08/14/2018
9	Issue for Construction	08/14/2018
10	Issue for Construction	08/14/2018

Exterior Elevations

A201

ANDREW JOHNSON

Vice President

404.942.2029

ajohnson@kingindustrial.com

BRYAN MARSHBURN, SIOR, CCIM

Senior Vice President

404.942.2044

bmarshburn@kingindustrial.com

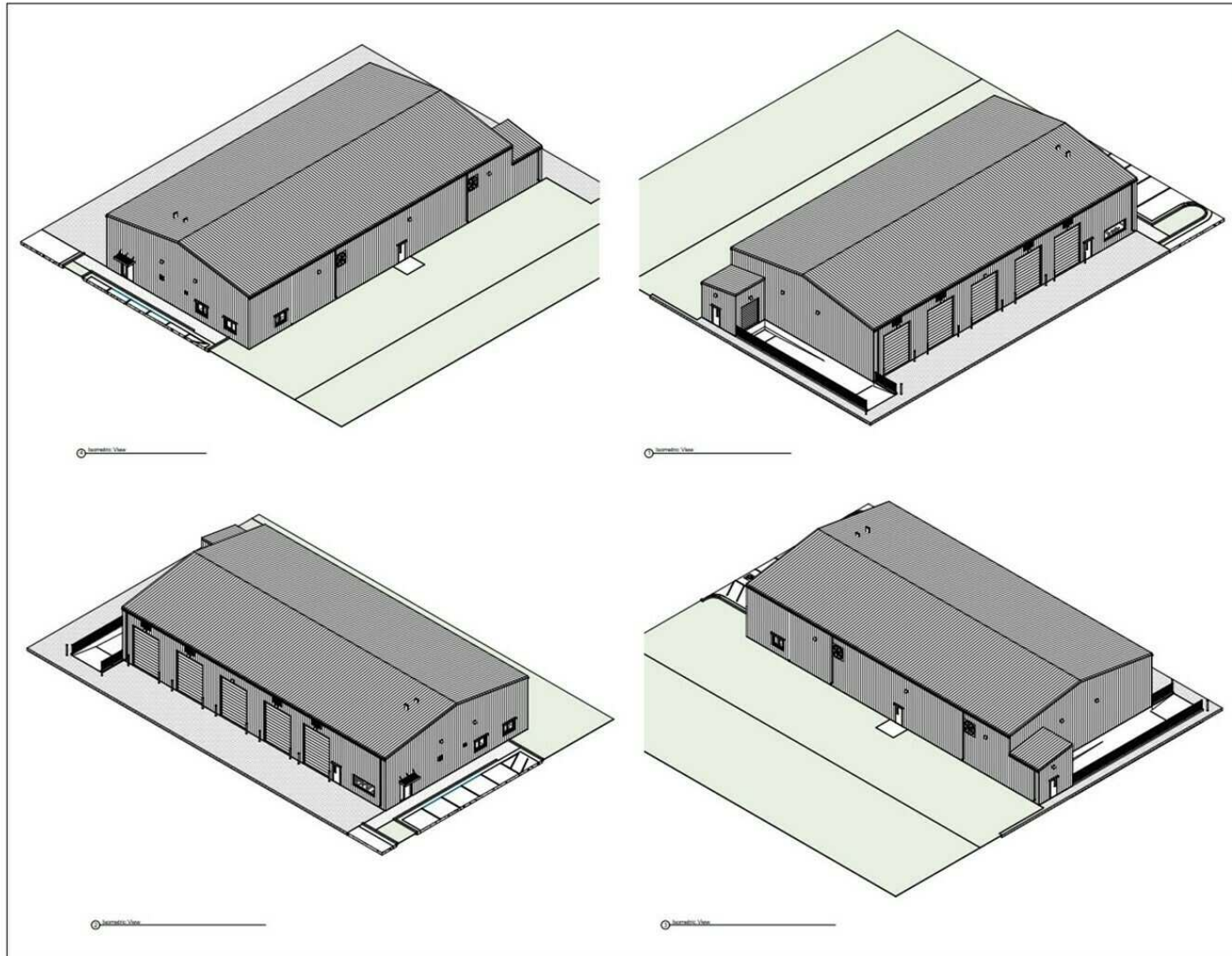
Every effort has been made to provide accurate information, but no liability is assumed for errors or omissions.

King Industrial Realty, Inc.

CORFAC INTERNATIONAL

Industrial • Commercial • Investment
 404.942.2000 | kingindustrial.com

BUILDING ELEVATION



Truck Steel Garage
 118 Ames St.
 Jefferson, GA 30549

Owner:
 CBK Super Ltd.
 1000 Riverchase
 Marietta, GA 30067
 770.428.8000
 www.cbksuper.com

Architect:
 King Industrial
 400 Peach Street SE
 Marietta, GA 30067
 770.428.2000
 www.kingindustrial.com

General Contractor:
 Kingsley Steel Building
 2100 North Road
 Columbus, GA 31908
 Phone: 706.333.1000

Specialty Contractor:
 MKC Structural Engineers
 1000 Northside Dr. Suite 100
 Marietta, GA 30067
 Phone: 770.333.2000
 www.mkc.com

Contractor:

Contractor:
 King Industrial
 400 Peach Street SE
 Marietta, GA 30067
 Phone: 770.428.2000



Date	Description	Drawn By	Checked By	Scale

Isometric Views

A202

ANDREW JOHNSON

Vice President
 404.942.2029

ajohnson@kingindustrial.com

BRYAN MARSHBURN, SIOR, CCIM

Senior Vice President
 404.942.2044

bmarshburn@kingindustrial.com

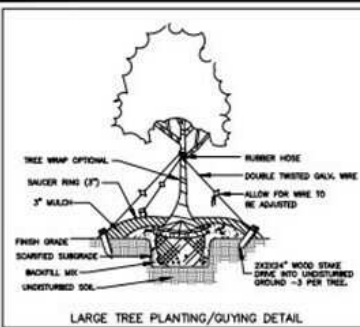
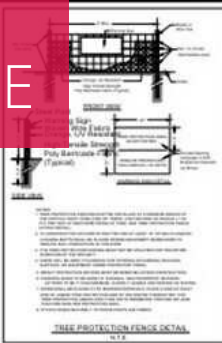
Every effort has been made to provide accurate information, but no liability is assumed for errors or omissions.

King Industrial
 Realty, Inc.

CORFAC
 INTERNATIONAL

Industrial • Commercial • Investment
 404.942.2000 | kingindustrial.com

LANDSCAPE

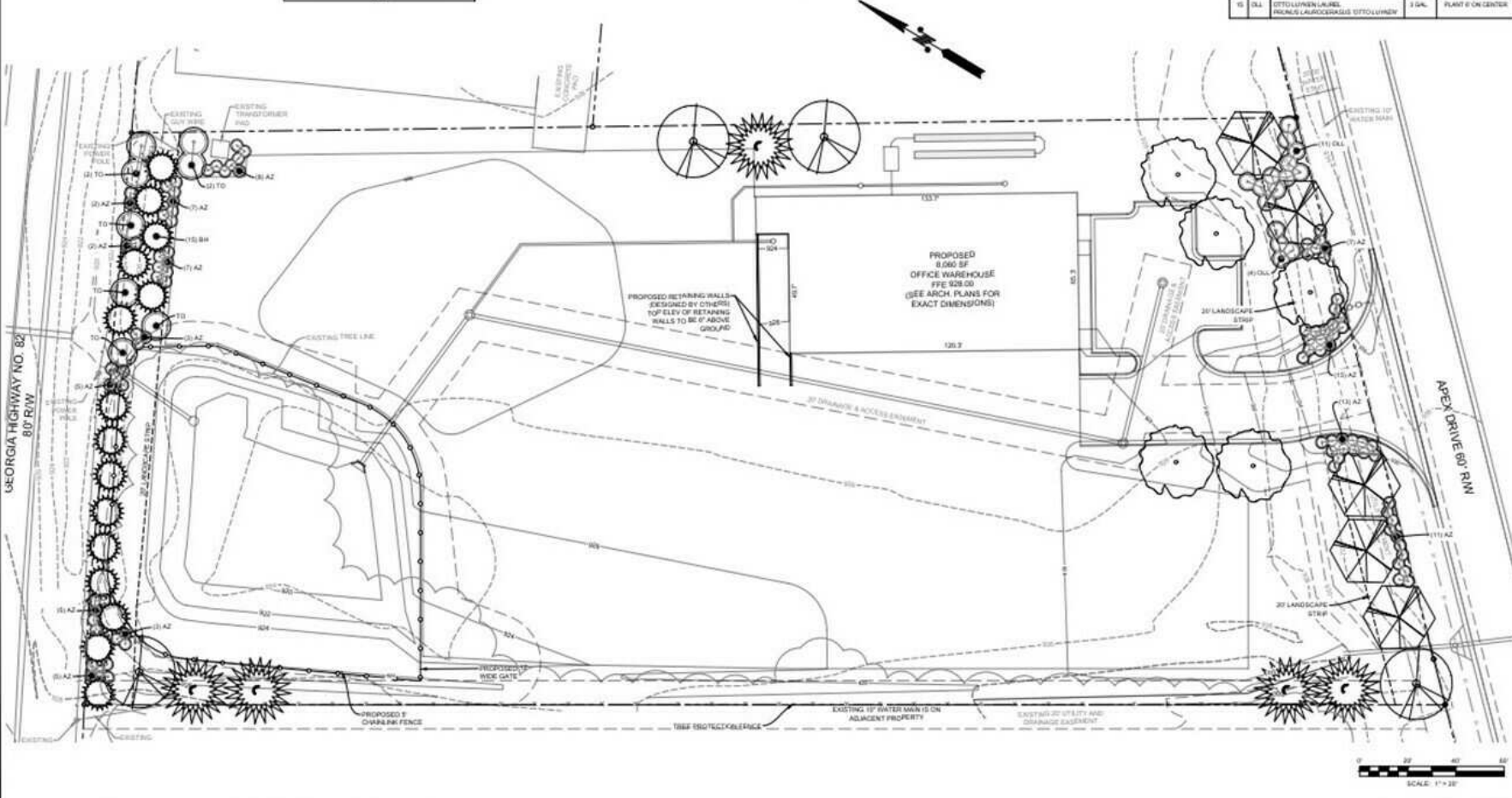


SYMBOL	COMMON NAME	BOTANICAL NAME	SIZE	QTY	SF OF TREE*	TOTAL
	WALLOW OAK	QUERCUS PHellos	2\"/>			

- GENERAL NOTES:**
- TOTAL SQUARE FOOTAGE OF SITE: 104,700 SF. 20% REQUIRED CANOPY COVERAGE = 20,940 SF. TOTAL CANOPY COVERAGE SHOULD BE 10% OF SITE.
 - LANDSCAPE STRIP REQUIREMENTS: 10' WIDE STRIP (MIN) TREE AND 10' BUFFER PER 10' - 4\"/>

QTY BY LIST

QTY	CODE	COMMON AND BOTANICAL NAME	SIZE	NOTES
15	SH	BURFORD HEMLOCK	3 GAL.	PLANT 15 ON CENTER
8	TD	TEA OLIVE	3 GAL.	PLANT 12 ON CENTER
66	AZ	AZALEA	3 GAL.	PLANT 6 ON CENTER
15	DL	OTTO LINDEN	3 GAL.	PLANT 6 ON CENTER



158 APEX LLC
158 APEX DRIVE
JACKSONVILLE, FL 32218
WWW.158APEX.COM

158 APEX DRIVE WAREHOUSE
GMD NO. 257
158 APEX DR. JEFFERSON
JACKSON COUNTY, GA

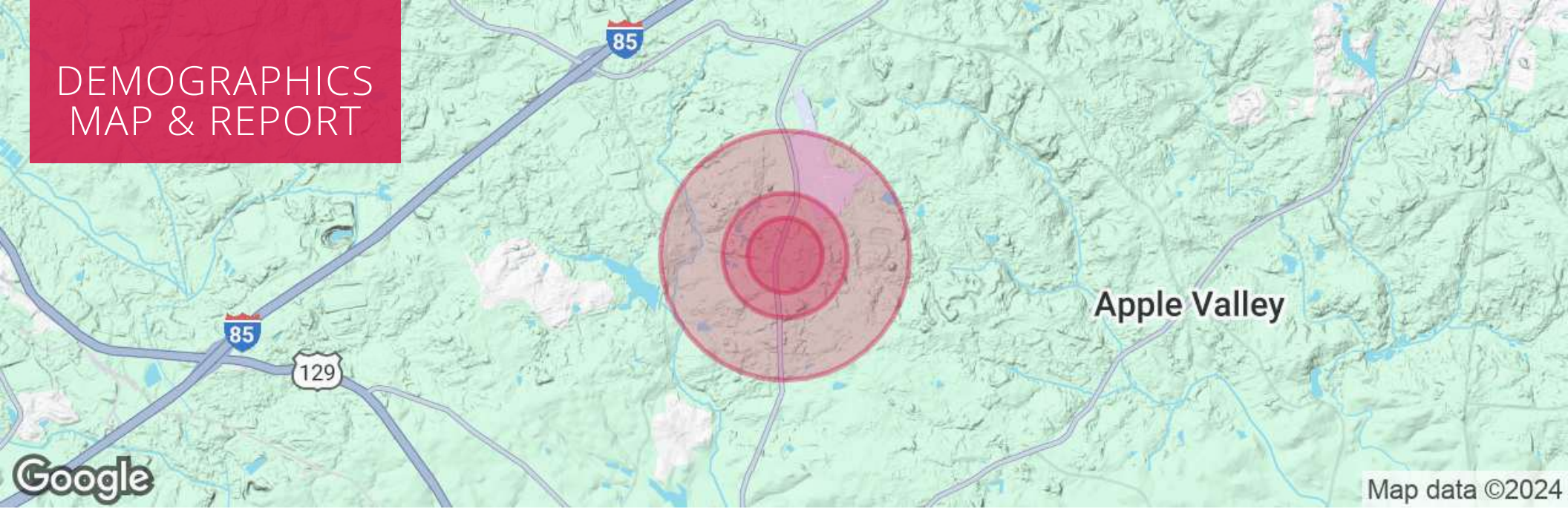
DATE: 11/18/2023
SCALE: 1" = 20'
SHEET: 11
JOB: 230348

ANDREW JOHNSON
Vice President
404.942.2029
ajohnson@kingindustrial.com

BRYAN MARSHBURN, SIOR, CCIM
Senior Vice President
404.942.2044
bmarshburn@kingindustrial.com

Every effort has been made to provide accurate information, but no liability is assumed for errors or omissions.

DEMOGRAPHICS MAP & REPORT



POPULATION

	0.3 MILES	0.5 MILES	1 MILE
Total Population	74	210	614
Average Age	39	39	39
Average Age (Male)	38	38	38
Average Age (Female)	40	40	40

HOUSEHOLDS & INCOME

	0.3 MILES	0.5 MILES	1 MILE
Total Households	24	67	194
# of Persons per HH	3.1	3.1	3.2
Average HH Income	\$123,812	\$121,926	\$116,364
Average House Value	\$436,786	\$438,991	\$445,887

ANDREW JOHNSON

Vice President

404.942.2029

ajohnson@kingindustrial.com

BRYAN MARSHBURN, SIOR, CCIM

Senior Vice President

404.942.2044

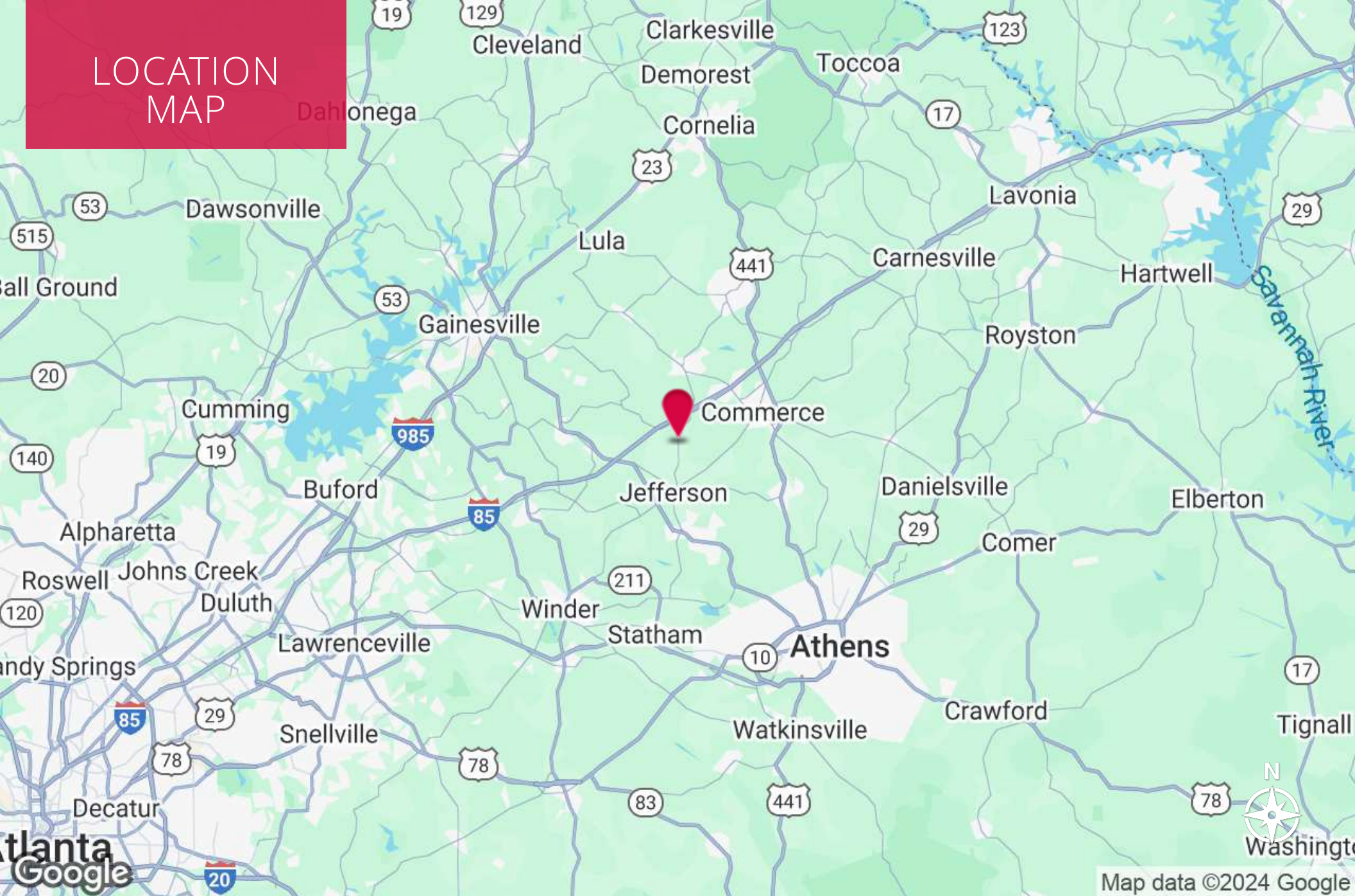
bmarshburn@kingindustrial.com

Every effort has been made to provide accurate information, but no liability is assumed for errors or omissions.



Industrial • Commercial • Investment
404.942.2000 | kingindustrial.com

LOCATION MAP



ANDREW JOHNSON

Vice President

404.942.2029

ajohnson@kingindustrial.com

Every effort has been made to provide accurate information, but no liability is assumed for errors or omissions.

BRYAN MARSHBURN, SIOR, CCIM

Senior Vice President

404.942.2044

bmarshburn@kingindustrial.com



EXCLUSIVELY LISTED BY:

ANDREW JOHNSON

Vice President

ajohnson@kingindustrial.com

404.942.2029

BRYAN MARSHBURN, SIOR, CCIM

Senior Vice President

bmarshburn@kingindustrial.com

404.942.2044

King *Industrial
Realty, Inc.*

Industrial • Commercial • Investment

404.942.2000 | kingindustrial.com