

Executive Office Suites @ Trail Creek Re-imagined



Fully Furnished | Secure | Move-In Ready

Riverside's Most Advanced Flex Office Experience

- **4097 Trail Creek Rd, Riverside, CA 92505**
- **Fully Furnished • Secure • Modern Flex Office Suites**

Welcome to a new standard in professional office space. This isn't your typical office rental; it's a meticulously designed workspace that speaks volumes about your business before you say a word. From the moment you arrive, every detail has been crafted to inspire confidence, professionalism, and success.

A First Impression That Speaks for You



Walk into a professionally curated environment designed to impress clients, partners, and employees alike.

From the moment guests arrive, the experience reflects credibility, success, and modern professionalism.

Our lobby creates an immediate sense of trust and sophistication; the kind of space that makes clients feel they're working with a company that has arrived.

The contemporary design features high-end finishes, thoughtful lighting, and comfortable seating areas that invite conversation while maintaining a polished, professional atmosphere.

Every element has been selected to create an environment that elevates your brand and sets the tone for successful business relationships.

1

Guest-Ready Lobby

Professionally designed reception area that welcomes visitors with style.

2

Modern Finishes

High-quality materials and contemporary design throughout.

3

Comfortable Seating

Inviting areas for clients and guests to relax.

4

Professional Atmosphere

Quiet, focused environment perfect for business.

Your Office. Ready on Day One.

No build-outs. No furniture shopping. No delays. Each private office is fully furnished and professionally designed, allowing your team to focus on work; not logistics. Imagine signing a lease on Monday and conducting business on Tuesday. That's the reality we offer.

Our suites come equipped with everything you need to hit the ground running. Ergonomic furniture, professional aesthetics, and thoughtful layouts create spaces where productivity flourishes naturally. You bring your laptop and your ambition; we provide everything else.



Move-In Ready Features:

- ☐ Ergonomic desks and premium seating
- ☐ Clean, modern aesthetic that impresses clients
- ☐ Secure access with 24/7 monitoring
- ☐ Professional atmosphere conducive to focus
- ☐ Polished finishes and quality materials
- ☐ Flexible configurations for teams of any size
- ☐ Premium Amenities included

Flexible Space Without Corporate Red Tape



Whether you need a single executive office or room to scale, our suites are designed to adapt—without the restrictions, inflexible contracts, or impersonality of corporate office chains. We understand that businesses evolve, and your workspace should evolve with you.

From intimate 120-square-foot executive offices perfect for solo practitioners to expansive 2,500-square-foot suites that accommodate growing teams, we offer configurations that match your current needs with the flexibility to expand as you grow. No rigid corporate policies. No cookie-cutter spaces. Just professional office solutions tailored to how you actually work.

01

Choose Your Size

Select from suites ranging 120 to 2,500 square feet.

02

Select Your Term

12 month flexibility option or long-term stability.

03

Move In Immediately

Fully furnished and ready for business operations.

04

Scale As Needed

Expand or adjust without unnecessary overhead.

Why Choose Flexibility?

Traditional office leases lock you into rigid terms that rarely match business reality. Markets shift, teams grow, needs change. Our flexible approach recognizes that your workspace should support your goals, not constrain them.

Unlike corporate chains that prioritize standardization over service, we work with you to find solutions that make sense for your specific situation. No unnecessary overhead. No inflexible requirements. Just professional space that works the way you need it to.



Where Decisions Are Made



A state-of-the-art conference environment engineered for high-stakes meetings, presentations, and collaboration; whether your team is in the room or across the globe. This isn't just a meeting space; it's where strategies crystallize, deals close, and visions align.

Our signature conference room represents a substantial investment in your success. While many office spaces offer basic meeting rooms as an afterthought, we've created a technology-forward environment specifically designed for the demands of modern business communication. From local team strategy sessions to international client presentations, this room handles it all with sophistication and reliability.

24+ Foot Custom Glass Write Board

Expansive whiteboard surface for brainstorming, planning, and visual collaboration that keeps everyone engaged

Laser Projector System

Crystal-clear presentations in any lighting condition with maintenance-free projection technology

Logitech Rally Bar with Built-In AI

Enterprise-grade video conferencing with intelligent speaker tracking and automatic framing

All-in-One Video Conferencing

Seamless connectivity to Zoom, Teams, Google Meet, and all major platforms; just walk in and start

The technology integration goes beyond just having good equipment; it's about creating a seamless experience where the tools disappear and the conversation takes center stage. No fumbling with cables, no technical delays, no embarrassing moments when clients are watching. Everything works, every time, so you can focus on what matters: making the right impression and driving your business forward.

This is the kind of room that makes people want to see it in person. Schedule a tour and experience firsthand why tenants consistently cite our conference facilities as a key differentiator in their decision to locate here.

Security You Can See - And Security You Can't



This is not just access control; it's layered protection. AI-assisted monitoring combined with live security oversight ensures peace of mind 24/7. In an era where security concerns are paramount for businesses handling sensitive client information, intellectual property, or valuable assets, we've implemented a comprehensive approach that goes far beyond basic building access.

Our security infrastructure provides multiple layers of protection, from perimeter monitoring to internal access controls, all coordinated through advanced technology and human oversight. Whether you're working late, arriving early, or simply want confidence that your office and assets are protected around the clock, our system delivers.



Access-Controlled Building

Electronic keypad system restricts entry to authorized personnel only



24/7 AI-Assisted Monitoring

Advanced cameras with intelligent detection alert security to unusual activity



Remote Security Guards

Live monitoring by trained professionals who can respond to incidents immediately



Physical Patrols

Regular night and weekend patrols provide visible deterrence and rapid response

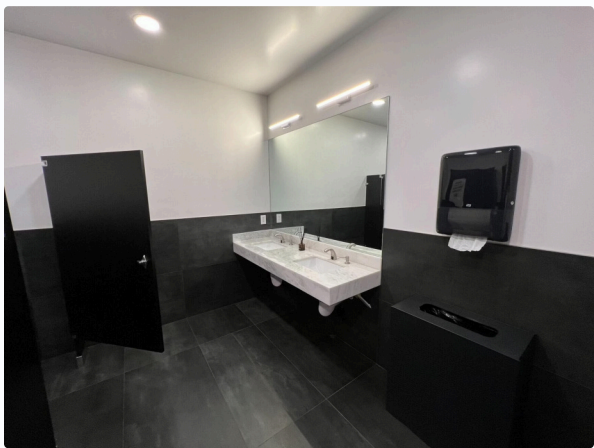
This comprehensive security approach appeals especially to legal firms handling confidential cases, financial services companies managing sensitive client data, medical practices protecting patient information, and technology companies safeguarding intellectual property. When you're responsible for information that can't be compromised, security isn't a luxury; it's a fundamental requirement.

The integration of AI-assisted cameras with live security monitoring creates a system that's both intelligent and responsive. Automated systems detect unusual activity patterns, while human judgment determines appropriate responses. It's the best of both worlds: technology that never sleeps and professionals who know how to react.

"The security infrastructure at Trail Creek gives our clients confidence that their sensitive information is protected. It's one of the main reasons we chose this location."

Premium Amenities Included

Every detail has been considered to support comfort, professionalism, and employee satisfaction. While some landlords see amenities as optional extras, we view them as essential elements of a workplace that people actually want to come to every day. These aren't afterthoughts; they're intentional investments in creating an environment where your team thrives.



Modern Restrooms

Fully remodeled facilities featuring marble countertops and contemporary fixtures. Professionally maintained daily to ensure a consistently premium experience.



Professional Common Areas

Thoughtfully designed spaces that balance functionality with aesthetic appeal, perfect for informal meetings or breaks.



Quality Finishes

High-end materials and attention to detail throughout the property reflect the caliber of businesses we serve.



Managed Filtered Water

Premium water filtration system with convenient access throughout the building.



Coffee & Tea Service

Complimentary refreshments to keep your team energized and focused.



Cleaning Services Included

Professional maintenance of common areas and restrooms, with office cleaning available.

These amenities might seem like small details, but they add up to a significant impact on daily experience. When employees don't have to think about whether the coffee is fresh, whether the restrooms are clean, or whether they need to bring water from home, they can focus entirely on their work. When clients visit, they notice the difference between a well-maintained professional environment and a neglected one.

The marble countertops, contemporary fixtures, and professional maintenance aren't extravagances; they're signals that this is a property managed by people who care about details. That same attention to quality extends to how we handle tenant relationships, maintenance requests, and facility management. A well-run property isn't an accident; it's the result of consistent effort and commitment to excellence.

Technology Without the Headaches

Optional technology services allow your team to stay productive without managing infrastructure or vendors. In today's business environment, technology isn't optional; but dealing with multiple vendors, managing installations, and troubleshooting connectivity issues shouldn't consume your time or distract from your core business.

We've streamlined technology deployment so you can operate at full capability from day one. Whether you're a tech-savvy startup that wants to bring your own solutions or a professional services firm that prefers turnkey systems, we have options that work for your situation.



VoIP Phone Systems

Professional-grade voice communication with advanced features including auto-attendant, voicemail-to-email, call forwarding, and extension dialing. Scale extensions up or down as your team changes.



Desktop & Laptop Options

Hardware procurement and setup available for teams that need standardized equipment without capital expenditure. Focus on your business while we handle procurement logistics.



High-Speed Internet Ready

Building infrastructure supports enterprise-grade connectivity. Bring your existing provider or choose from our recommended partners for seamless installation.



Secure Networking Support

Professional network configuration available to ensure your data remains protected. From basic setup to complex VPN configurations, we connect you with trusted technology partners.

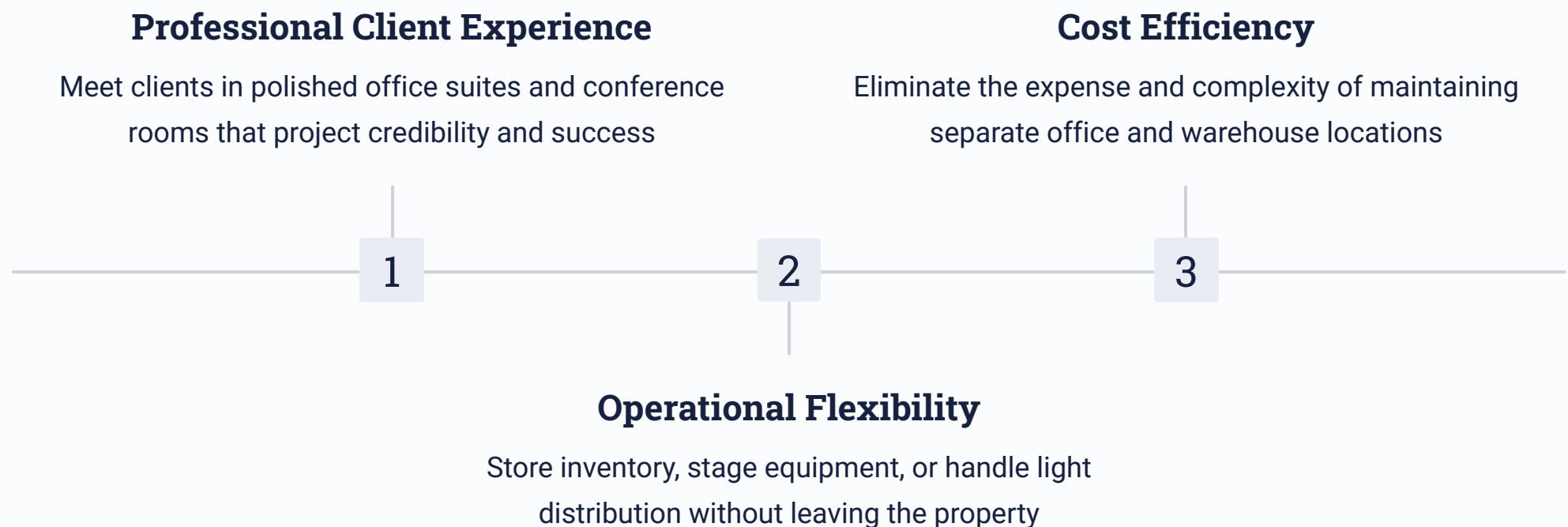
The flexibility of optional technology services means you're never paying for capabilities you don't need, but everything you require is readily available. New startup that wants minimal overhead? Bring your laptops and connect to our guest network while you get established. Established firm that needs a complete technology infrastructure on day one? We can coordinate full deployment with your existing IT team or recommend trusted technology partners.

This approach is particularly valuable for distributed teams, satellite offices, or companies experiencing rapid growth. Technology that scales with your needs, without forcing you into rigid service contracts or proprietary systems you can't control. The building's modern infrastructure provides the foundation; your specific requirements determine the configuration.

Office Space With Optional Warehouse Capability

Need light storage, staging, or operational flexibility? Limited warehouse availability offers a rare hybrid solution within a professional office environment. This unique combination addresses a persistent challenge for many businesses: maintaining a professional client-facing presence while having practical space for inventory, equipment, or operational needs.

Most businesses face a difficult choice; rent expensive office space that lacks storage capability, or lease warehouse space that's inappropriate for meeting clients. We've eliminated that compromise with a hybrid solution that few properties can offer: professional office suites with optional warehouse access in the same building.



This configuration is ideal for businesses in e-commerce, manufacturing sales, professional services with equipment needs, medical device companies, technology firms with hardware components, or any operation that benefits from having professional office space and practical storage under one roof.

Imagine conducting a client meeting in your executive suite, then walking them through your inventory or demonstrating equipment in a clean, organized warehouse space; all without leaving the building. It's the operational efficiency of a warehouse combined with the professional polish of a business office park.

❏ **Limited Availability:** Warehouse combinations are in high demand and not available with all office suites. Contact us to discuss current availability and configuration options that match your specific needs.

Designed for Teams, Clients, and Growth



Shared amenities create a professional yet welcoming environment that supports collaboration, hospitality, and productivity. The physical workspace profoundly influences how teams interact, how clients perceive your business, and how effectively work gets done. We've designed these spaces to facilitate all three.

The lobby serves as more than an entrance—it's a hospitality space where clients can wait comfortably, where informal meetings can happen naturally, and where the visual language immediately communicates professionalism and success. Common areas provide natural gathering points for team collaboration without the formality of a conference room. Every element has been selected to create an environment that feels both polished and genuinely welcoming.



Client Confidence

First impressions matter. Our professional environment helps clients feel they're working with an established, credible organization; even if your company is just getting started.



Team Collaboration

Thoughtfully designed common spaces provide natural gathering points where teams can connect, brainstorm, and build the relationships that drive organizational success.



Room to Grow

As your business expands, scale your footprint within the same building community. Maintain continuity while accommodating growth—without relocating.

Culture doesn't exist in a vacuum; it's shaped by environment. A thoughtfully designed workspace signals to employees that you invest in their experience, that you value quality, and that you're building something that lasts. It attracts better talent, supports retention, and creates the kind of workplace where people do their best work.

For clients, the environment tells a story before you say a word. Walking into a professional, well-maintained space creates confidence. It suggests organization, attention to detail, and commitment to quality—exactly the attributes clients want in their business partners.

Work Where Business Meets Balance



Located in the prestigious Turner Riverwalk Development, enjoy scenic walking trails, water features, and convenient access just north of the 91 Freeway at the Riverwalk Parkway exit. Location matters; not just for commute times and client convenience, but for quality of life and the daily experience of coming to work.

Turner Riverwalk represents a different approach to business parks: one that recognizes people work better when their environment offers more than just parking and concrete. The development integrates professional office space with thoughtful amenities that make the workday more pleasant and the work-life balance more achievable.

Scenic Walking Trails:

Take walking meetings, clear your head between calls, or enjoy lunch outdoors on beautifully maintained trails throughout the development

Water Features & Landscaping:

Professional landscaping and water features create a park-like environment that's both calming and inspiring

Strategic Freeway Access:

Located just north of the 91 Freeway at Riverwalk Parkway exit —easy for employees, clients, and deliveries

The Turner Riverwalk location provides the rare combination of professional credibility, natural amenity, and logistical convenience. Your address reflects well on your business, your team enjoys an environment that's more than just an office building, and clients find you easily accessible from major transportation routes.

This isn't a generic office park where every building looks identical and the parking lot is the primary feature. It's a thoughtfully planned development that recognizes modern businesses value quality of environment alongside practical functionality. The result is a location that attracts and retains both clients and employees; a meaningful competitive advantage in today's market for both business development and talent acquisition.

The walkability of the development also means teams can take working lunches outside, conduct walking meetings that spark creativity, or simply step away from their desks for a mental refresh without getting in a car. These small quality-of-life improvements add up to significant impacts on productivity, satisfaction, and retention.

See It Once - You'll Understand



Schedule a private tour and experience a workspace designed to reflect where your business is going. We can describe the quality of our finishes, detail our security infrastructure, and list our amenities—but nothing replaces walking through the space and experiencing firsthand what makes this property exceptional.

During your tour, you'll see the attention to detail in our lobby, the sophistication of our conference technology, the quality of our office buildouts, and the professionalism of the entire environment. You'll understand why tenants consistently choose Trail Creek over corporate chains and generic office parks. Most importantly, you'll be able to envision your team working here, your clients meeting here, and your business growing here.

01

Contact Us

Call, email, or visit our website to schedule your private tour at a time that works for your schedule

02

Tour the Facility

Experience the lobby, conference room, sample offices, amenities, and ask all your questions

03

Discuss Your Needs

Share your specific requirements and timeline; we'll work with you to find the right configuration

04

Move In and Thrive

Simple paperwork, quick occupancy, and ongoing support to ensure your success

Visit Us

4097 Trail Creek Rd
Riverside, CA 92505

Call Us

951-444-5027
Monday - Friday
9:00 AM - 5:00 PM

Email Us

info@4097trailcreek.com
We respond within 24 hours

Ready to see the difference?

The best way to understand what makes Trail Creek exceptional is to experience it yourself. Schedule your private tour today and discover the office space that will take your business to the next level.

[Schedule Your Tour](#)

[Call Now](#)

Welcome to Trail Creek



4097 Trail Creek Road | Riverside | CA | 92505



Your next office is waiting. Professional, secure, and designed for success.

Contact us today: 951-444-5027 | info@4097trailcreek.com