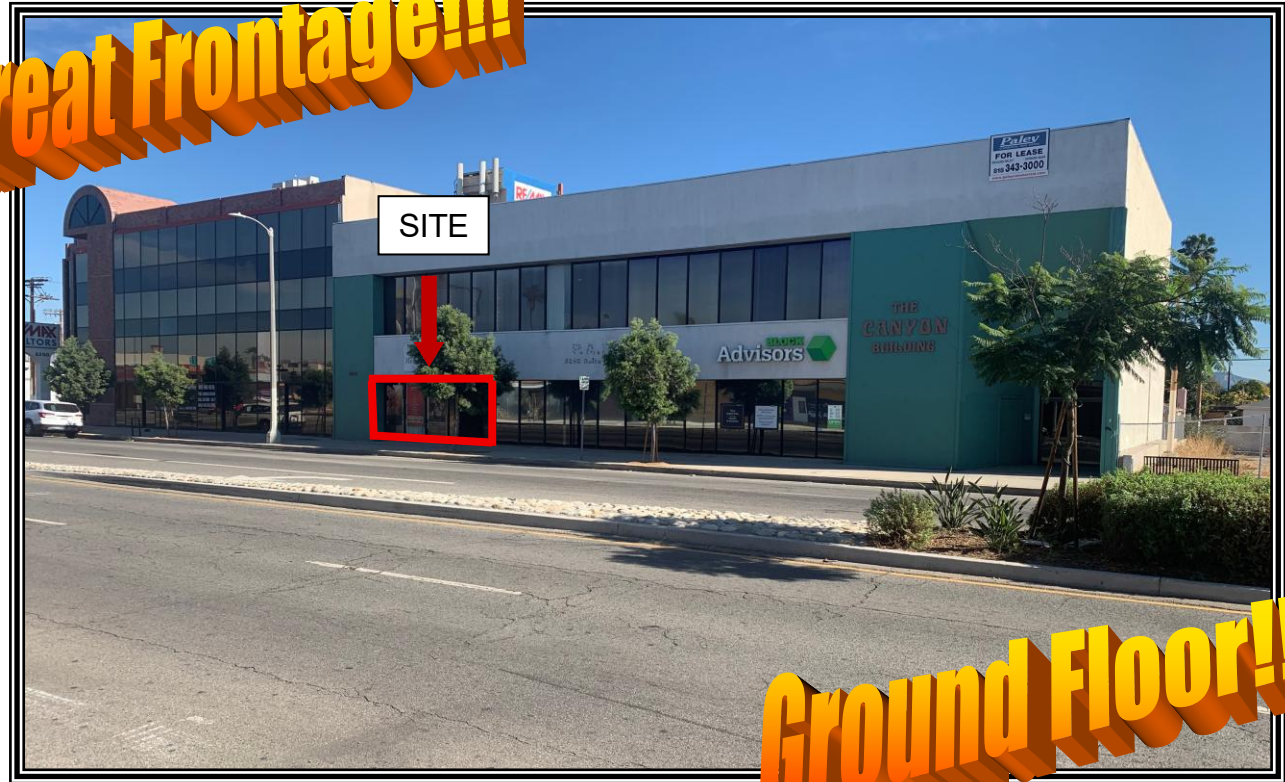


Prime "Office/Commercial Space" for Lease  
6240 LAUREL CANYON BOULEVARD

**Great Frontage!!!**



**Ground Floor!!!**

- LOCATION:** 6240 Laurel Canyon Boulevard  
North Hollywood, Ca 91606
- SIZE/RENTAL RATE:** **Unit 6244** - 1,150 +/- Rentable Sq. Ft.\* @ \$3,400.00 per month, GROSS  
**Unit 201** - 910 +/- Rentable Sq. Ft.\* @ \$2,050.00 per month, GROSS
- AVAILABLE:** Immediate
- PARKING:** Excellent parking in rear lot and street parking
- COMMENTS:**
- \* **Great Frontage with Front Access on Laurel Canyon Boulevard**
  - \* Close to 170 Freeway access
  - \* Many major tenants and amenities close by
  - \* Heart of North Hollywood
  - \* Ideal floor plan

**FOR MORE INFORMATION OR A TOUR, PLEASE CONTACT:**

**Richard L. Paley**

[richard@paleycommercial.com](mailto:richard@paleycommercial.com)

DRE: 00966353

**\*Lessee to Verify**

**Howard Bass**

[howard@paleycommercial.com](mailto:howard@paleycommercial.com)

DRE: 00940993

19507 Ventura Boulevard, Tarzana, Ca 91356 ~ Phone (818) 343-3000 ~ Fax (818) 343-3311  
[www.paleycommercial.com](http://www.paleycommercial.com)