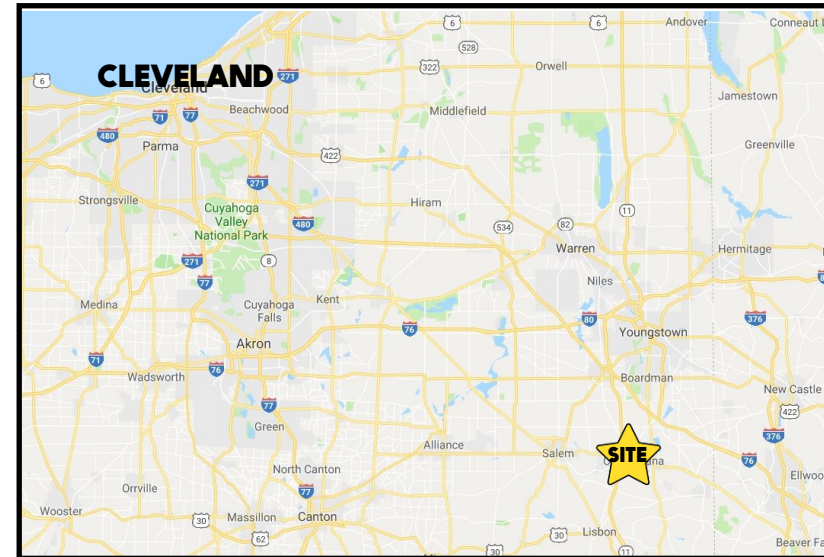


## LOCATION

919 Columbiana Canfield Rd, Columbiana, OH 44408



## HIGHLIGHTS

- Inline retail space (Former Family Video)
- 1,500 SF available
- Lots of front door parking
- Great location by restaurants, medical, and lodging
- Access from SR 14 and SR 46

## TRAFFIC

SR 46 = 6,872 VPD  
SR 14 = 9,009 VPD

## CONTACT

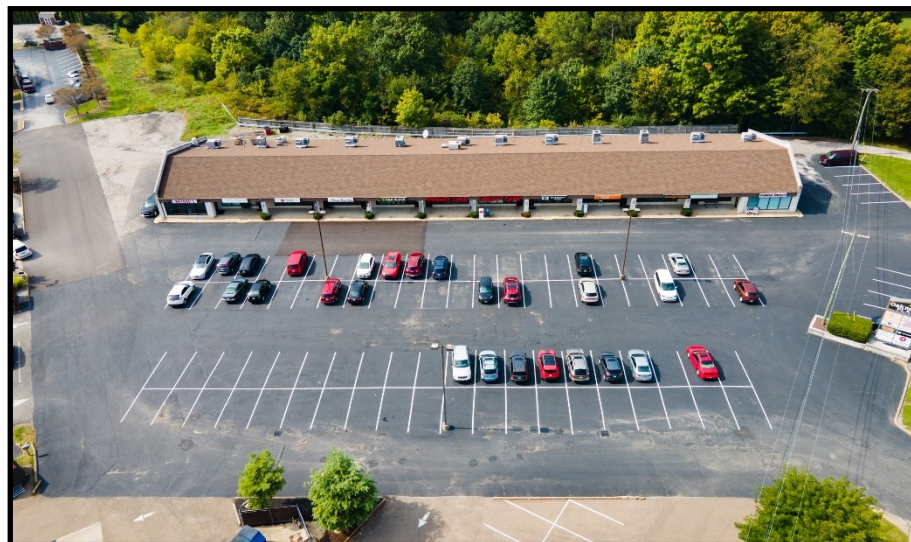
**BILL KUTLICK**

330.565.5701

bkutlick@platzrealtygroup.com

Office: 330.757.4889 | Fax: 330.294.5622 | 3768 Boardman Canfield Rd, Canfield, OH 44406

[www.PLATZREALTYGROUP.com](http://www.PLATZREALTYGROUP.com)



Office: 330.757.4889 | Fax: 330.294.5622 | 3768 Boardman Canfield Rd, Canfield, OH 44406

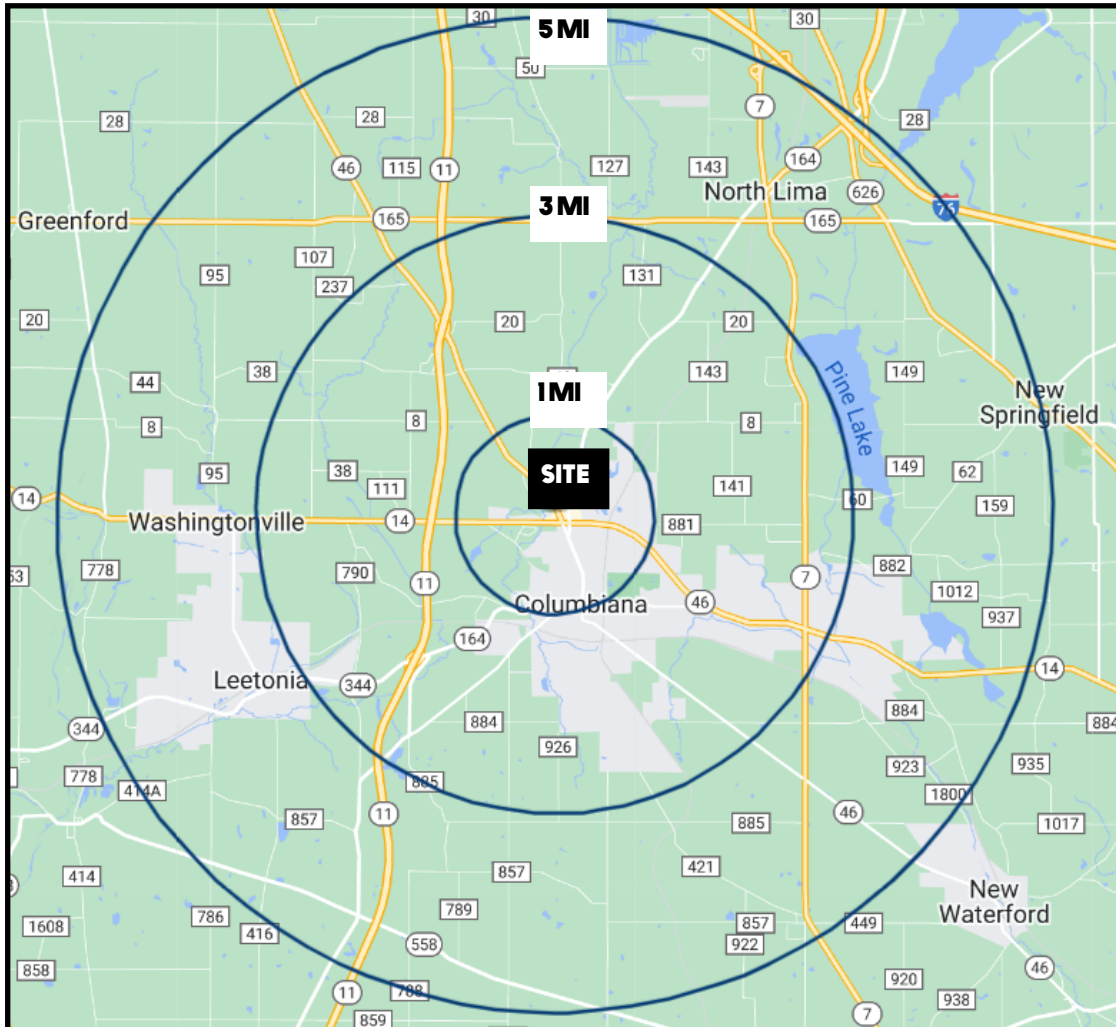
**[www.PLATZREALTYGROUP.com](http://www.PLATZREALTYGROUP.com)**

The information presented was obtained from sources believed to be true and reliable. The Platz Realty Group makes no warranties or guarantees to the accuracy of the information.



Office: 330.757.4889 | Fax: 330.294.5622 | 3768 Boardman Canfield Rd, Canfield, OH 44406

**[www.PLATZREALTYGROUP.com](http://www.PLATZREALTYGROUP.com)**



DEMOGRAPHICS	1 MI	3 MI	5 MI
<b>POPULATION</b>	3,286	9,169	17,557
<b>HOUSEHOLDS</b>	1,435	3,792	6,999
<b>MEDIAN AGE</b>	47	46	46
<b>AVERAGE HH INCOME</b>	\$72,294	\$72,550	\$74,886

**SITE INFORMATION**

<b>LOCATION</b>	Fairfield Township Mahoning County
<b>PROPERTY TYPE</b>	Retail plaza
<b>SIGNAGE</b>	Street & building signage
<b>SIZE</b>	Unit 919: 1,500-3,000 SF
<b>DIMENSIONS</b>	25' x 60'
<b>UTILITIES</b>	All utilities separately metered
<b>RENT</b>	Sublease: \$11.66-\$14.06/SF Gross

Office: 330.757.4889 | Fax: 330.294.5622 | 3768 Boardman Canfield Rd, Canfield, OH 44406

[www.PLATZREALTYGROUP.com](http://www.PLATZREALTYGROUP.com)