

FOR LEASE

9,243 SF

4567 Winters Chapel Road, Atlanta, GA
30360



PROPERTY OVERVIEW

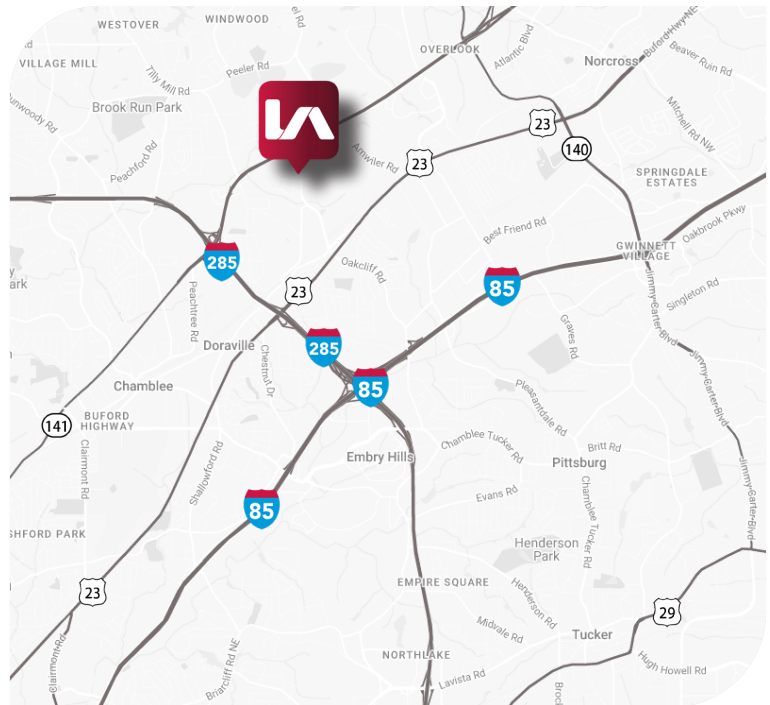
| | |
|-----------------|----------------------------|
| AVAILABLE SF: | 9,243 SF |
| OFFICE SF: | 752 SF |
| WAREHOUSE SF: | 8,491 SF |
| LOADING DOORS: | 2 dock high doors |
| CLEAR HEIGHT: | 24' |
| COLUMN SPACING: | 31'9" x 38' column spacing |
| SPRINKLER: | Wet System |
| POWER: | 120/208V, 200A (estimated) |

IREM Certified Sustainable Property

CRAIG VIERGEVER, SIOR
cviergever@lee-associates.com
O 404.442.2843
C 404.281.4481

TYLER FLEMMING
tflemming@lee-associates.com
O 404.442.2855
C 404.694.5661

CORT VOLANDT
cvolandt@lee-associates.com
O 404.442.2801
C 404.803.6138



GID
INDUSTRIAL

All information furnished regarding property for sale, rental, or financing is from sources deemed reliable, but not warranty or representation is made to the accuracy thereof and same is submitted to errors, omissions, change of price, rental or other conditions prior to sale, lease, or financing or withdrawal without notice. No liability of any kind is to be imposed on the broker herein.



**LEE &
ASSOCIATES**

COMMERCIAL REAL ESTATE SERVICES

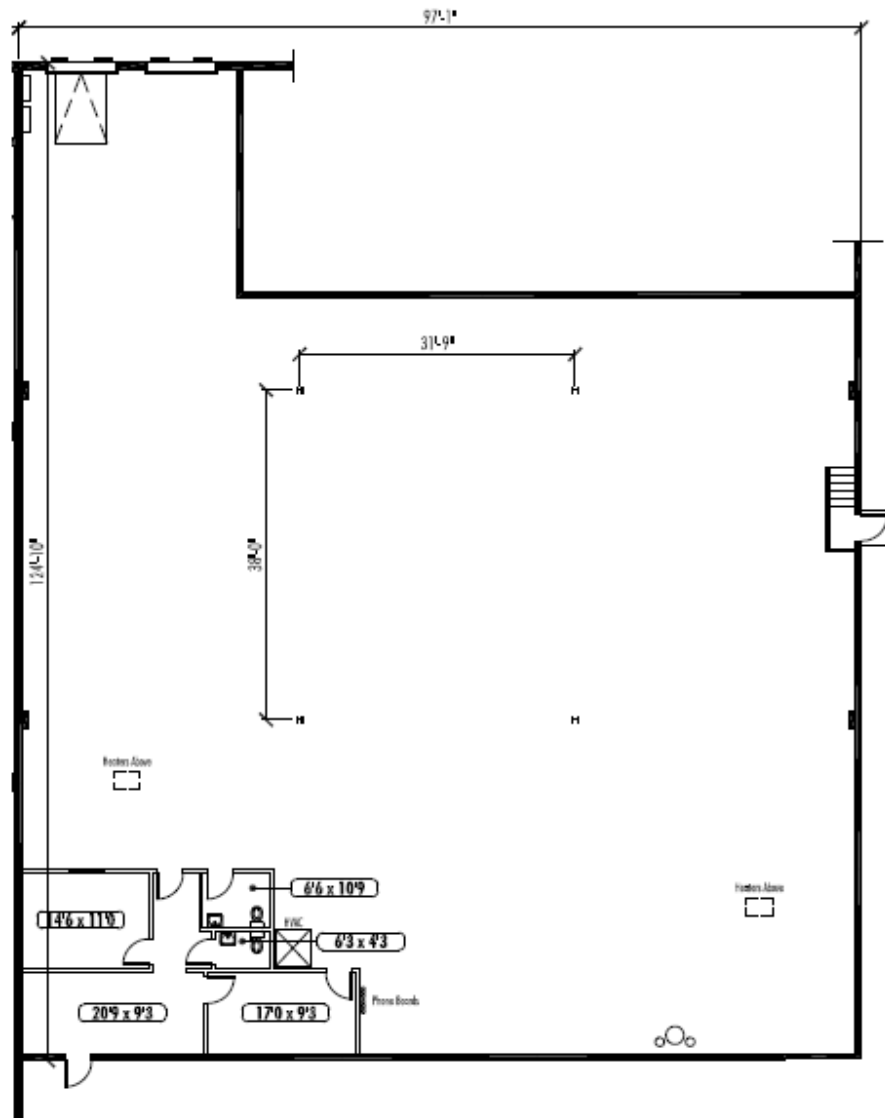
FOR LEASE

9,243 SF

4567 Winters Chapel Road, Atlanta, GA
30360



KEY PLAN



CRAIG VIERGEVER, SIOR
cviergever@lee-associates.com
O 404.442.2843
C 404.281.4481

TYLER FLEMMING
tflemming@lee-associates.com
O 404.442.2855
C 404.694.5661

CORT VOLANDT
cvolandt@lee-associates.com
O 404.442.2801
C 404.803.6138

G|I|D
INDUSTRIAL

All information furnished regarding property for sale, rental, or financing is from sources deemed reliable, but not warranty or representation is made to the accuracy thereof and same is submitted to errors, omissions, change of price, rental or other conditions prior to sale, lease, or financing or withdrawal without notice. No liability of any kind is to be imposed on the broker herein.