

**FOR LEASE**



**PROFESSIONAL  
RETAIL SPACE**

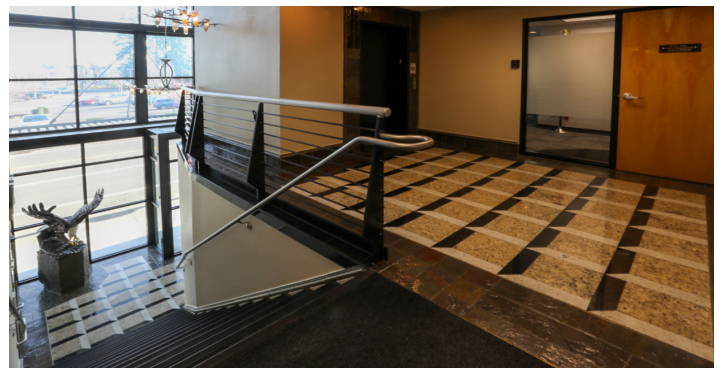
# **SENECA PLAZA**

**18861 SW MARTINAZZI AVENUE | TUALATIN | OR 97062**

# THE SPACE **B**



- ✓ Located in the historic downtown Tualatin district
- ✓ Well maintained building with modern finishes
- ✓ Contemporary professional offices
- ✓ Spaces ranging from 600 - 1,600 Sq.Ft
- ✓ High parking ratio
- ✓ Across the street from New Seasons, Cabellas, and nearby to many banks, restaurants, and local businesses
- ✓ Offices include private kitchenette/break areas with sink and storage cabinets
- ✓ Available Now!



## LOCATION

18861 SW Martinazzi Ave.

## USES

Retail Space

## SF

600 - 1,700 Sq. Ft.

## AVAILABLE

Now!

## PRICING

Call For More Info

## SHOWINGS

By Appointment



## CONTACT INFO

**David Emami**

+1 503 557 3350

david@barringtonpdx.com

**Austin Emami**

+1 503 887 6477

Austin@barringtonpdx.com

**Barrington Management, LLC.**  
18840 SW Boones Ferry Rd, Suite 216  
Tualatin, OR 97062



**BARRINGTON  
MANAGEMENT**

No warranty or representation, expressed or implied, is made as to the accuracy of the information contained herein, and same is submitted subject to errors, omissions, change of terms, rental or other conditions, withdrawal without notice, and to any special listing conditions imposed by principals.

1/20

