



**LEE & ASSOCIATES**  
GREENVILLE/SPARTANBURG

**Micah Williams**  
Senior Associate  
864.477.0455  
mwilliams@lee-associates.com

**Randall Bentley, SIOR, CCIM**  
President/Managing Principal  
864.444.2842  
rbentley@lee-associates.com

**864.704.1040**  
LeeUpstate.com

# BUILD TO SUIT OPPORTUNITY FOR SALE OR LEASE

Midway Industrial Park  
Buildings 1 & 2

## Call for Pricing

- 22,500 - 58,500 SF of Industrial Space
- ±0.5 Miles from I-85
- Can Deliver in Less Than 12 Months



**LOCATION**  
±0.5 MILES TO I-85



**OFFICE**  
BUILD TO SUIT



**UTILITIES**  
ALL AVAILABLE



**LIGHTING**  
LED THROUGHOUT



# PROPERTY OVERVIEW & PHOTOS

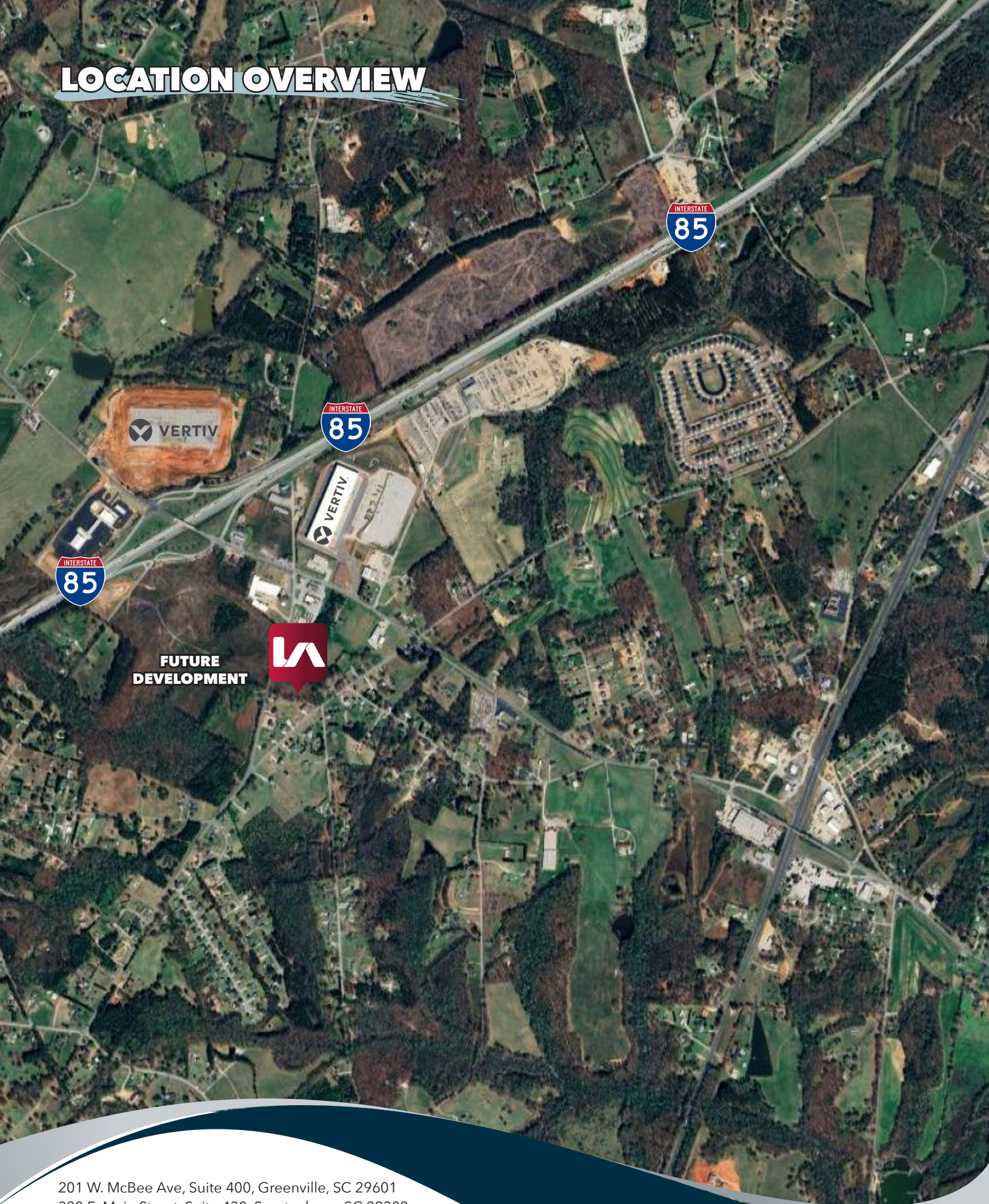
PROPERTY NAME	Midway Industrial Park
TYPE	Industrial
TOTAL AVAILABLE SF	BUILDING 1: ±36,000 SF BUILDING 2: ±22,500 SF
TAX MAP #	1930015022
COUNTY	Anderson
CITY LIMITS	No
ZONING	None

YEAR BUILT	Build To Suit
OFFICE SF	Build To Suit
CEILING HEIGHT	Minimum 24'
DOCK DOORS	BUILDING 1: 4 (Four) BUILDING 2: 2 (Two)
DRIVE-IN DOORS	BUILDING 1: 2 (Two) BUILDING 2: 1 (One)
LIGHTING	LED
PARKING	30 Spaces





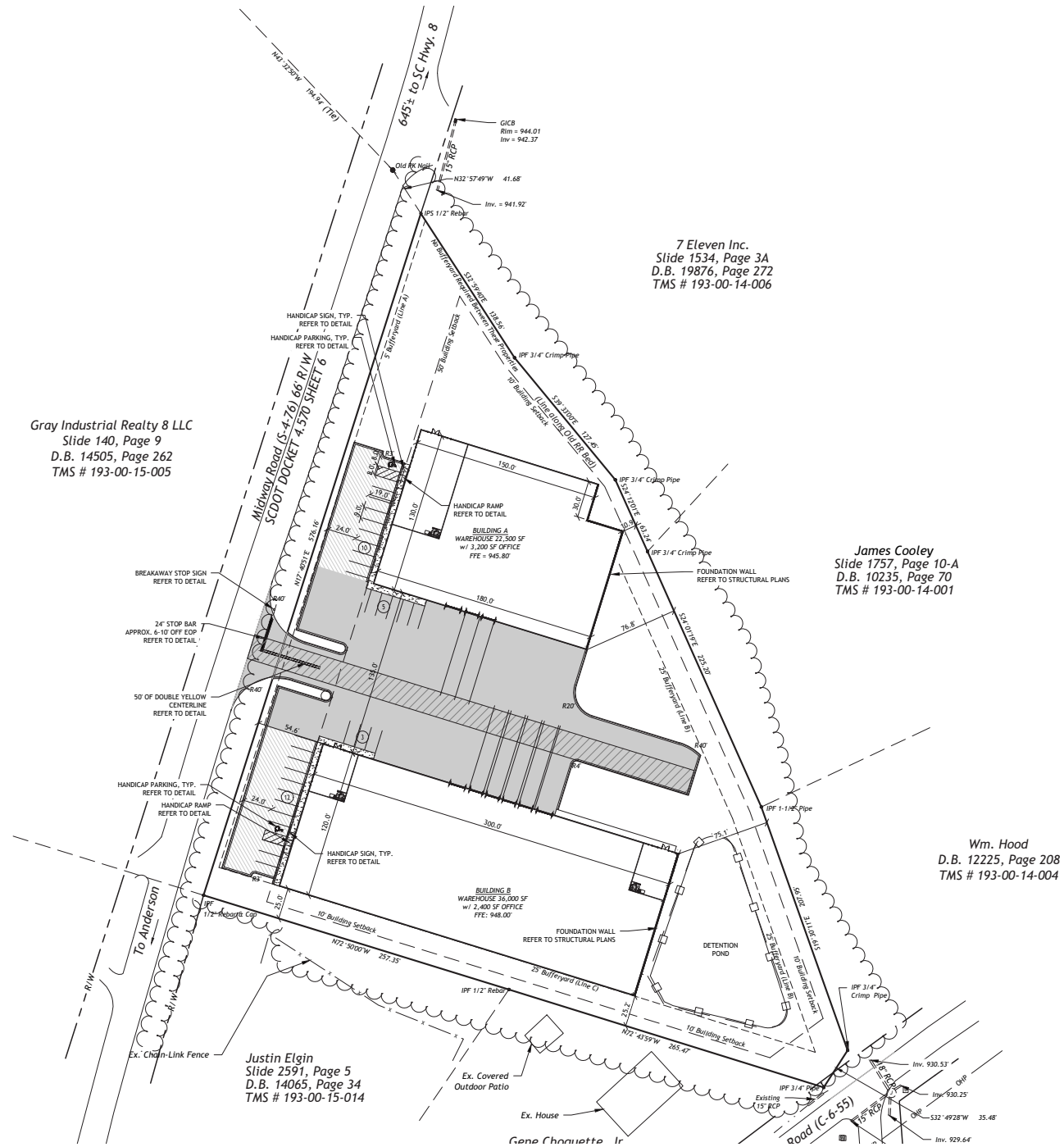
# LOCATION OVERVIEW



201 W. McBee Ave, Suite 400, Greenville, SC 29601  
320 E. Main Street, Suite 430, Spartanburg, SC 29302  
**LeeUpstate.com | 864.704.1040**



# SITE PLAN







## LEARN MORE GIVE US A CALL



LEE & ASSOCIATES  
GREENVILLE/SPARTANBURG

**864.704.1040**  
**LeeUpstate.com**

### GREENVILLE OFFICE

201 W. McBee Ave, Suite 400  
Greenville, SC 29601

### SPARTANBURG OFFICE

320 E. Main Street, Suite 430  
Spartanburg, SC 29302

All information furnished regarding the properties and information in this packet is from sources deemed reliable, but no warranty or representation is made to the accuracy thereof and same is submitted to errors, omissions, change of price, rental or other conditions prior to sale, lease or financing or withdrawal without notice. No liability of any kind is to be imposed on the broker herein.



### Micah Williams

Senior Associate

864.477.0455

mwilliams@lee-associates.com



### Randall Bentley, SIOR, CCIM

President/ Managing Principal

864.444.2842

rbentley@lee-associates.com