

T.O. Campbell, attorney for conducting this suit the sum of \$15.00, and that the defendant pay to said attorney the sum of \$15.00, for like services.

It appearing to the Court that the object of this suit has been accomplished, it is ordered that this cause be stricken from the argument docket of this Court and the papers herein filed and preserved among the ended chancery causes of this Court.

I respectfully ask for this decree:

T.O. Campbell, of counsel for all parties.

Truly recorded this 7th day of October, 1936.

Teste: *W.F. Brimmer*, Clerk.

This plat represent to a division into two parts of the Hardenburgh Farm, near Partlow, in Spotsylvania County, Va.

By a survey made in 1881 by John M. Smith the farm originally contained 436 1/2 acres, but various parcels have been sold off leaving the present area of 380.8 acres.

The old corners which are still corners to the present tract are described on the old plat as follows:

- "A" is a cedar West of the main road leading from Partlow to Davenport's Bridge, corner to Dr. J. W. Davis.
- "E" is a stake in a marsh, corner to Jonathan J. Durrett.
- "F" is a wild cherry tree East and willowst of a gate, corner to J. J. Young.
- "H" is a white oak as pointers, corner to do.
- "I" is a planted stone post oak E. of a road, corner to Dr. J. W. Davis and L. G. Maddox.
- "C" is two holly bushes and a post oak E. of a road, corner to L. G. Maddox.
- The new corner "B" which divides the tract is a point in the road over the center of a pipe culvert.

Plotted Aug. 18, 1936
L. R. R. Curtis,
Certified Surveyor.

Scale: 1" = 500'

Note: Old bearings corrected for variation to date.

Truly recorded this 7th day of October, 1936.

Teste: *W.F. Brimmer*, Clerk.

Anderson 1914

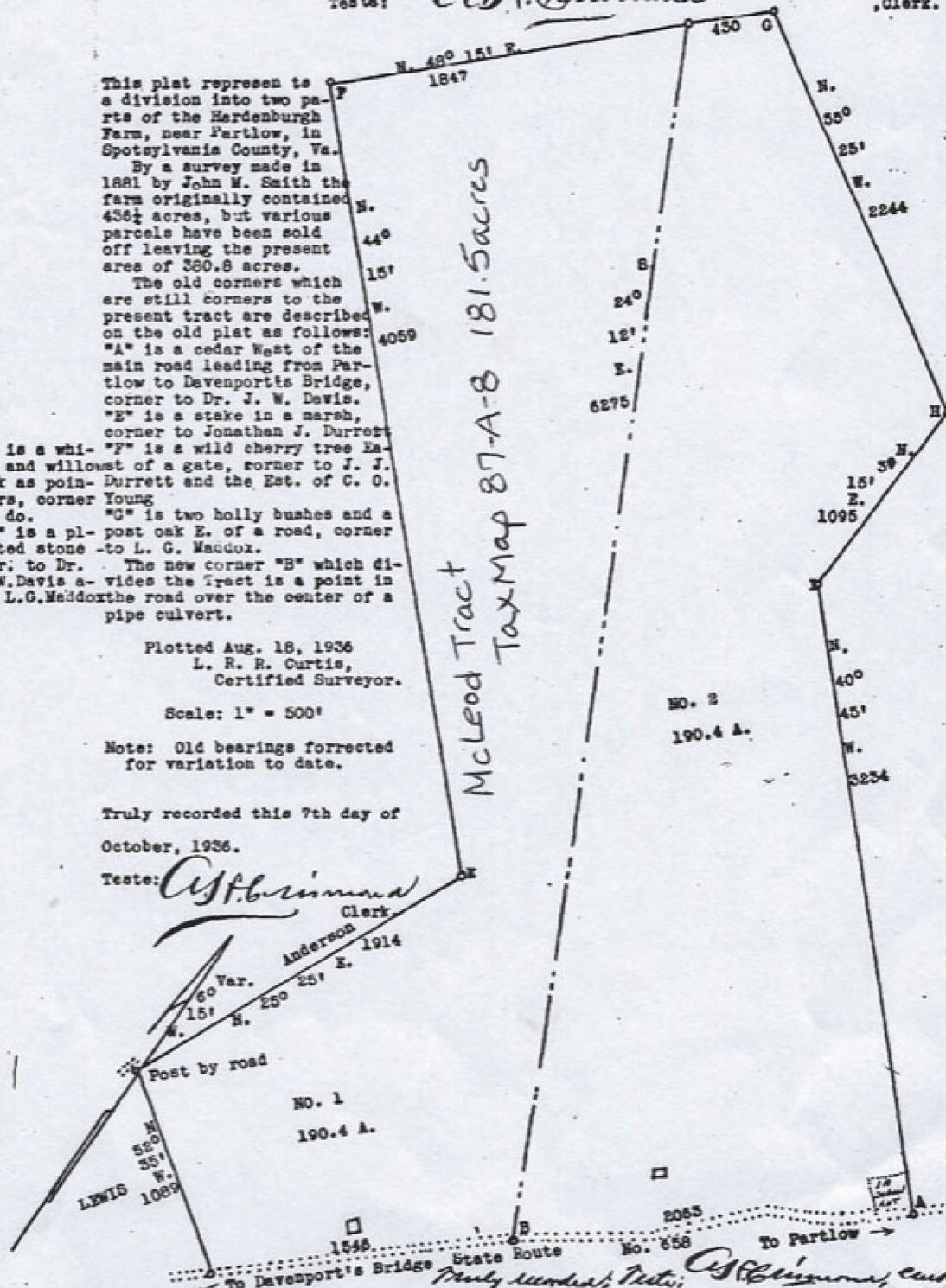
60 Var.
15' N. 55° 25' E.

Post by road

NO. 1
190.4 A.

LEWIS
52° 35' N.
1089 W.

McLeod Tract
Tax Map 87-A-8 181.5 acres



To Davenport's Bridge State Route No. 658 To Partlow →
Truly recorded, Teste: *W.F. Brimmer*, Clerk.