



66 SOUTH PEARL STREET

ALBANY, NY 12207



**Pyramid Brokerage
Company**

Independently Owned and Operated / A Member of the Cushman & Wakefield Alliance

Cushman & Wakefield Copyright 2019. No warranty or representation, express or implied, is made to the accuracy or completeness of the information contained herein, and same is submitted subject to errors, omissions, change of price, rental or other conditions, withdrawal without notice, and to any special listing conditions imposed by the property owner(s). As applicable, we make no representation as to the condition of the property (or properties) in question.

PROPERTY HIGHLIGHTS:

Class A office space available ranging from 1,000± SF to 20,325± SF (full floor) with contiguous floors that can be combined to accommodate larger tenants up to 40,431± SF. One parking space per 1,000± SF available in attached building garage. Very attractive tenant improvement packages are available for credit tenants.

[Click To View Property Video](#)

FEATURES:

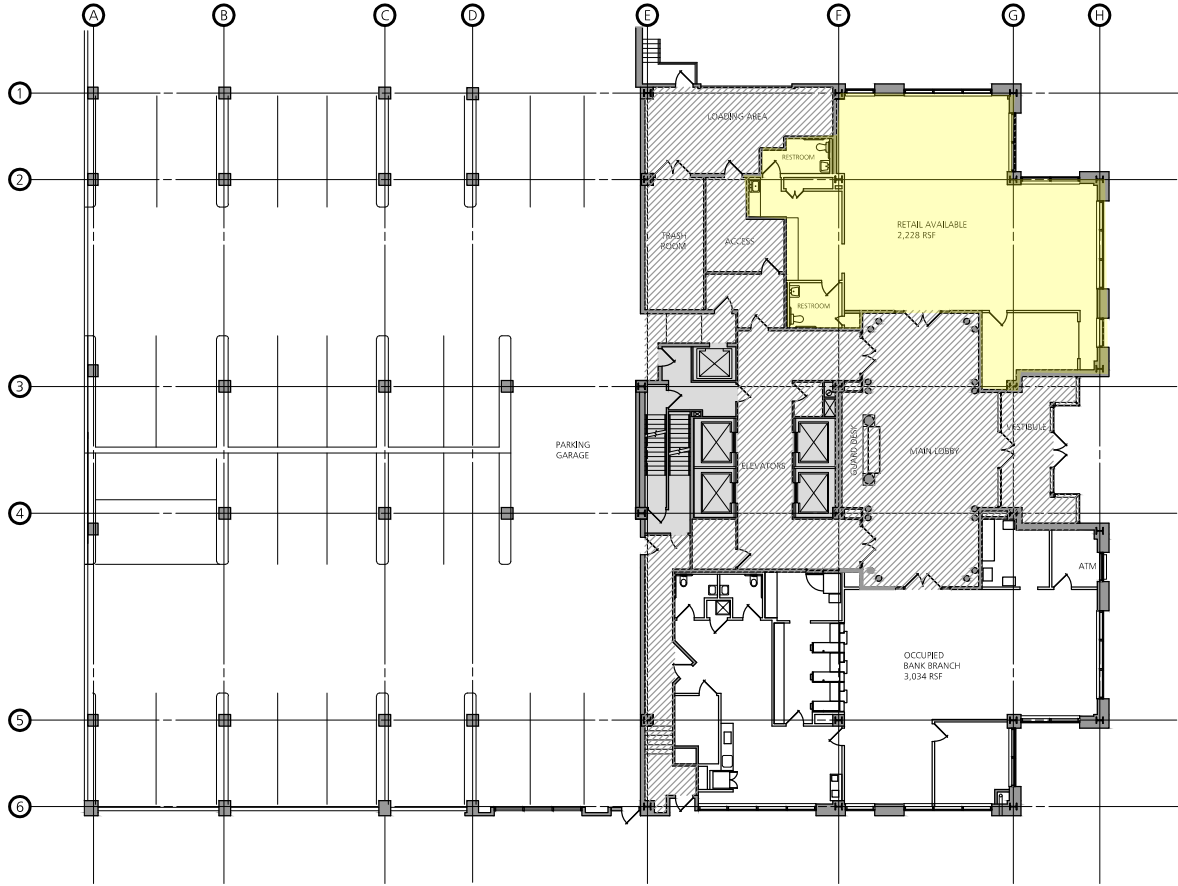
- Panoramic views of the Catskill Mountains, Empire State Plaza, Downtown, & the Hudson River
- Located in the heart of Albany's Central Business District and across from the Times Union Center
- Recent upgrades to lobby and common areas
- 12 Stories
- 4 Elevators
- 1 Loading Dock
- 165± private parking garage with surface parking and public lots also available



PHOTOS



FLOOR PLANS



1 1ST FLOOR PLAN
 SCALE: NONE 5,262 RSF

66 SOUTH PEARL STREET
 ALBANY, NY

1st Floor Plan
 2,228± SF Available
 (Office or Retail)

FLOOR PLANS



3RD FLOOR PLAN
SCALE: NONE DATE: 05/17/19

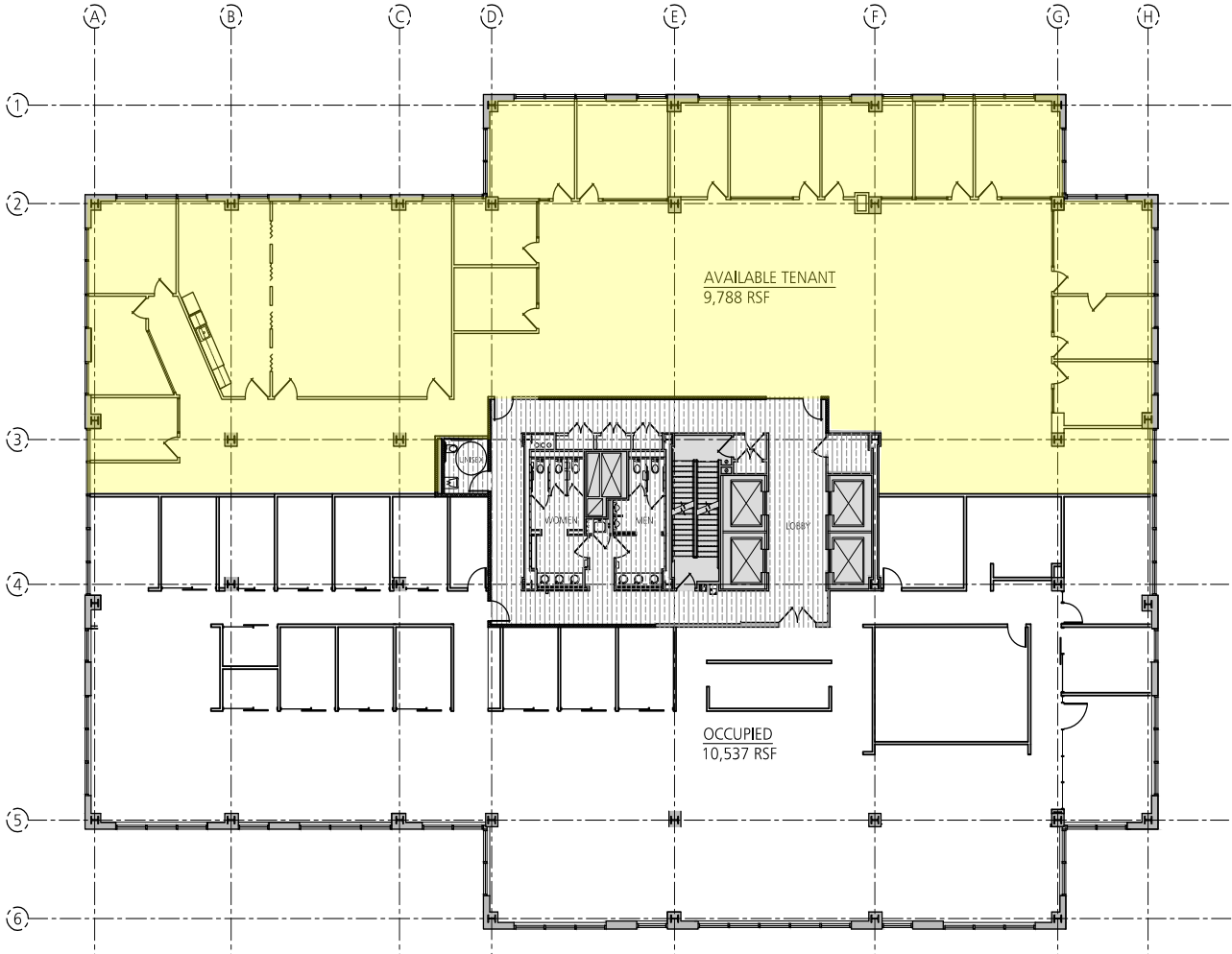
66 SOUTH PEARL STREET
ALBANY, NY

3rd Floor Plan
7,506± SF Available
(Full Floor – can be subdivided)



View Virtual Tour:
<https://kuula.co/share/collection/7qj7Y?logo=1&info=1&fs=1&vr=0&sd=1&thumbs=1>

FLOOR PLANS



4TH FLOOR PLAN - MULTI-TENANT PROPOSED TENANT
SCALE: NONE

DATE: 01/18/18

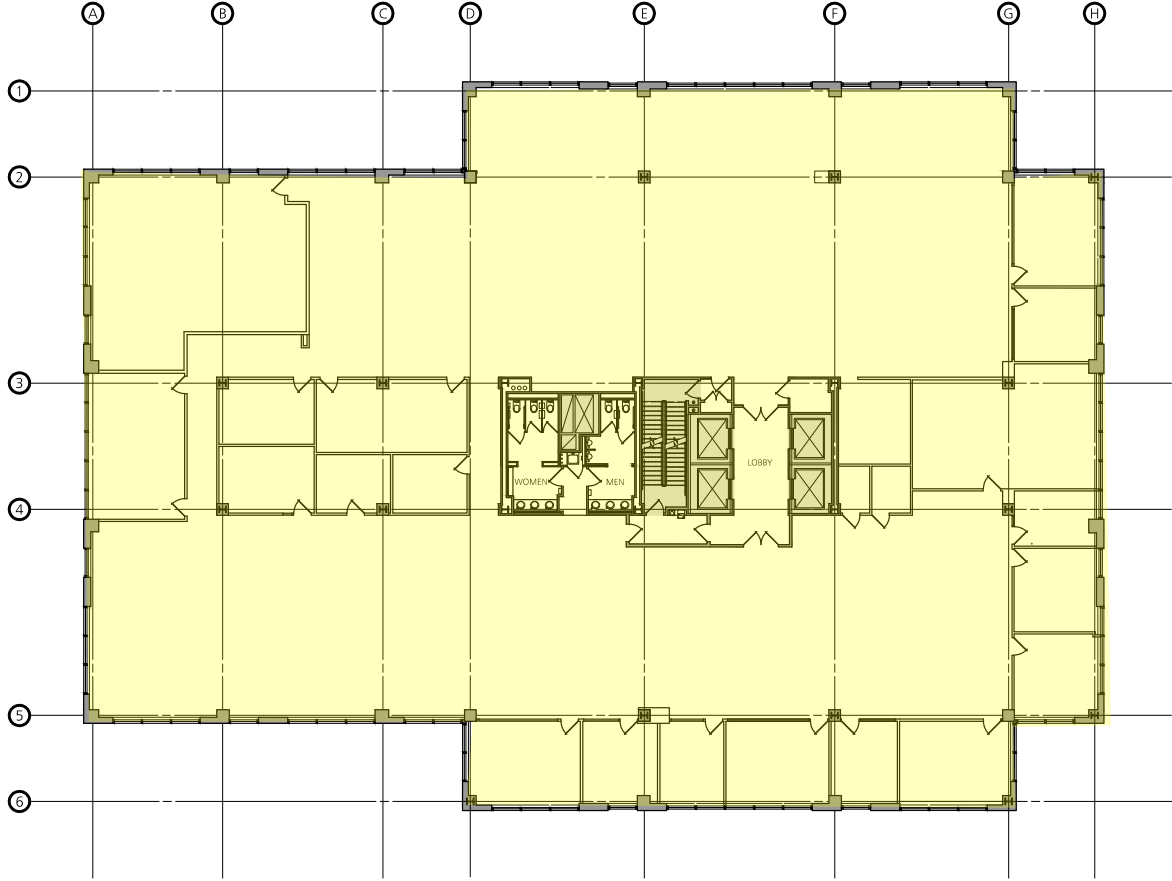
66 SOUTH PEARL STREET
ALBANY, NY

4th Floor Plan
9,788± SF Available
(Can be subdivided)



View Virtual Tour:
<https://kuula.co/share/collection/7qj77?logo=1&info=1&fs=1&vr=0&sd=1&thumbs=1>

FLOOR PLANS



8TH FLOOR PLAN
SCALE: NONE 20,325 RSF

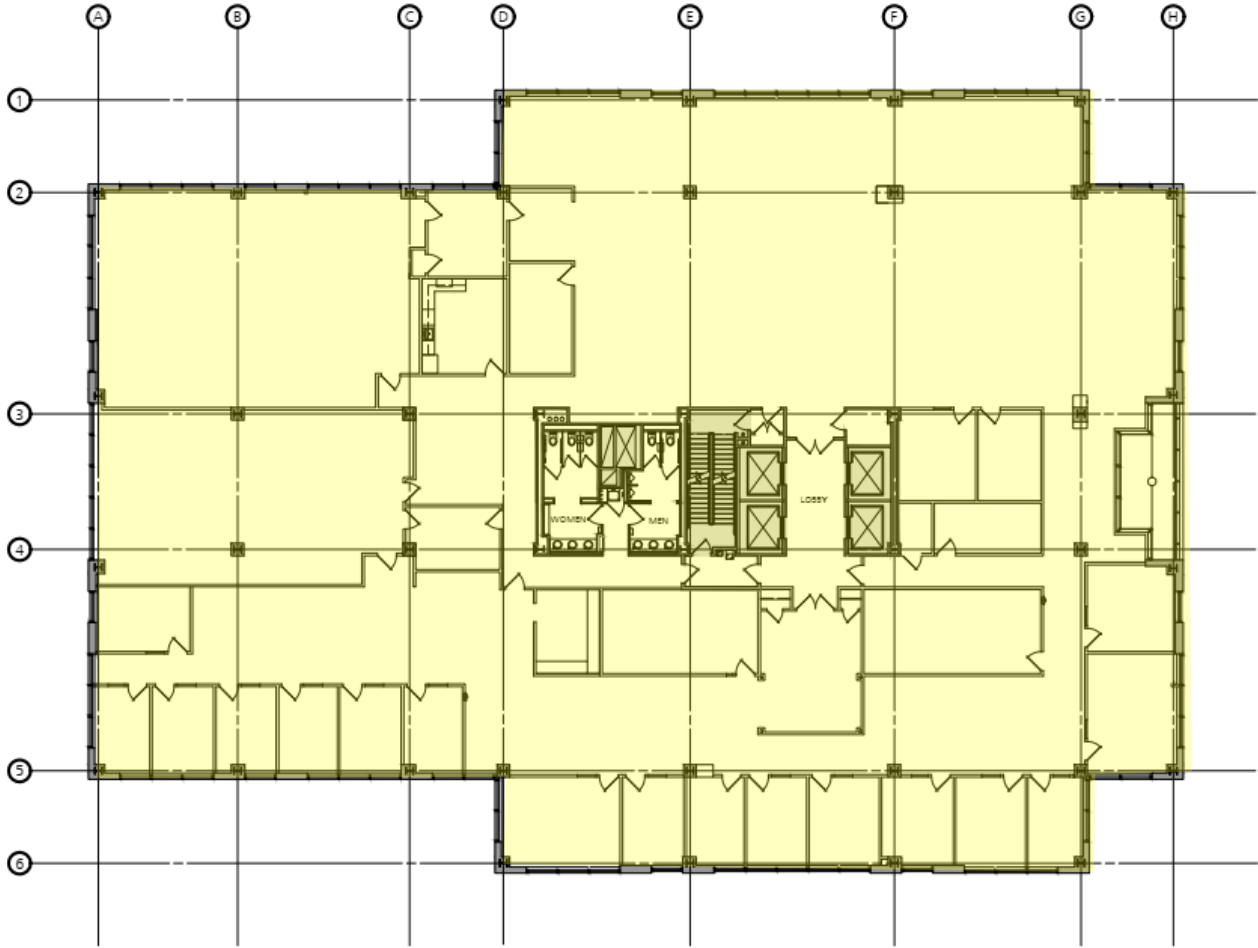
66 SOUTH PEARL STREET
ALBANY, NY

8th Floor Plan
20,325± SF Available
(Full Floor)



View Virtual Tour:
<https://kuula.co/share/collection/7qV1r?logo=1&info=1&fs=1&vr=0&sd=1&thumbs=1>

FLOOR PLANS



9TH FLOOR PLAN
SCALE: NONE 20,106 RSF

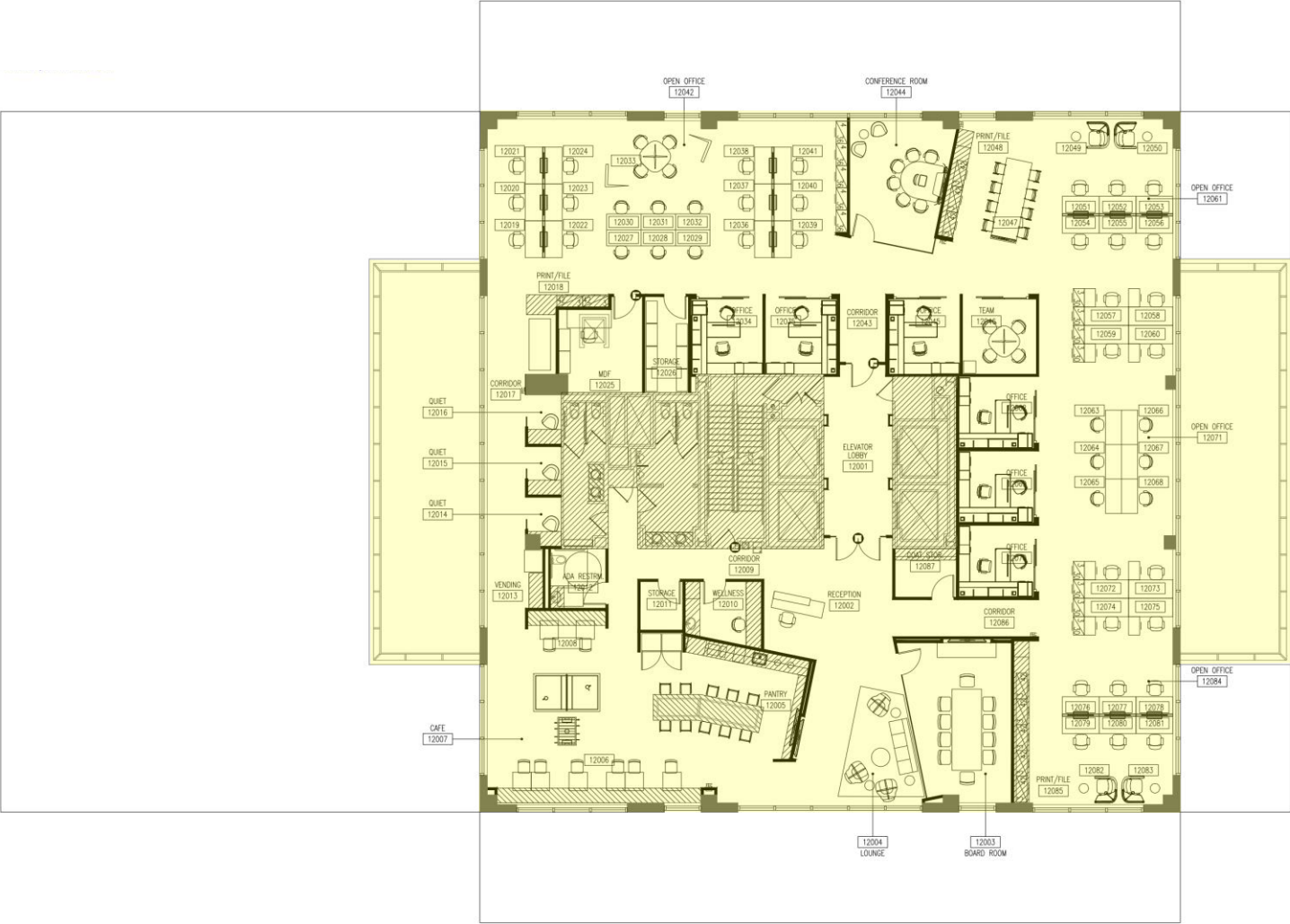
66 SOUTH PEARL STREET
ALBANY, NY

9th Floor Plan
20,106± SF Available
(Full Floor)



View Virtual Tour:
<https://kuula.co/share/collection/7qxXB?logo=1&info=1&fs=1&vr=0&sd=1&thumbs=1>

FLOOR PLANS



12th Floor Plan
9,040± SF Available
(Full Floor)



View Virtual Tour:
<https://kuula.co/share/collection/7qxXY?logo=1&info=1&fs=1&vr=0&sd=1&thumbs=1>

Property Location



Independently Owned and Operated / A Member of the Cushman & Wakefield Alliance

Cushman & Wakefield Copyright 2019. No warranty or representation, express or implied, is made to the accuracy or completeness of the information contained herein, and same is submitted subject to errors, omissions, change of price, rental or other conditions, withdrawal without notice, and to any special listing conditions imposed by the property owner(s). As applicable, we make no representation as to the condition of the property (or properties) in question.



FOR MORE INFORMATION, CONTACT:

JEFFREY D'AMORE, SIOR
EXECUTIVE DIRECTOR
REAL ESTATE BROKER
+1 518 954 9160 (MOBILE)
JDAMORE@PYRAMIDBROKERAGE.COM

PYRAMID BROKERAGE COMPANY
40 BRITISH AMERICAN BOULEVARD
LATHAM, NY 12210
PHONE: +1 518 489 9199
FAX: +1 518 489 3492
PYRAMIDBROKERAGE.COM



Independently Owned and Operated / A Member of the Cushman & Wakefield Alliance

Cushman & Wakefield Copyright 2019. No warranty or representation, express or implied, is made to the accuracy or completeness of the information contained herein, and same is submitted subject to errors, omissions, change of price, rental or other conditions, withdrawal without notice, and to any special listing conditions imposed by the property owner(s). As applicable, we make no representation as to the condition of the property (or properties) in question.