

FOR SUBLEASE

212 E Ohio St / Chicago, IL

@properties[®]
COMMERCIAL



FOR SUBLEASE - FULL FLOOR

PROPERTY HIGHLIGHTS

- 5300 sf. (cannot be divided)
- Price: negotiable
- Available: Immediately
- Sublease Expiration : 3/31/2028
- Fully Furnished
- One block from Michigan Ave
- 32 workstations
- 5 private offices
- 2 conference rooms
- Full service Kitchen
- LED lighting throughout
- 3 bathrooms

MIKE ROURKE

312.505.1610

mrourke@atproperties.com

 atpropertiescommercial.com

All information furnished is from sources deemed reliable. No representation is made as to the accuracy thereof and it is submitted subject to errors, omissions, changes, or withdrawal without notice.

VIRTUAL TOUR



atpropertiescommercial.com

All information furnished is from sources deemed reliable. No representation is made as to the accuracy thereof and it is submitted subject to errors, omissions, changes, or withdrawal without notice.

@properties
COMMERCIAL







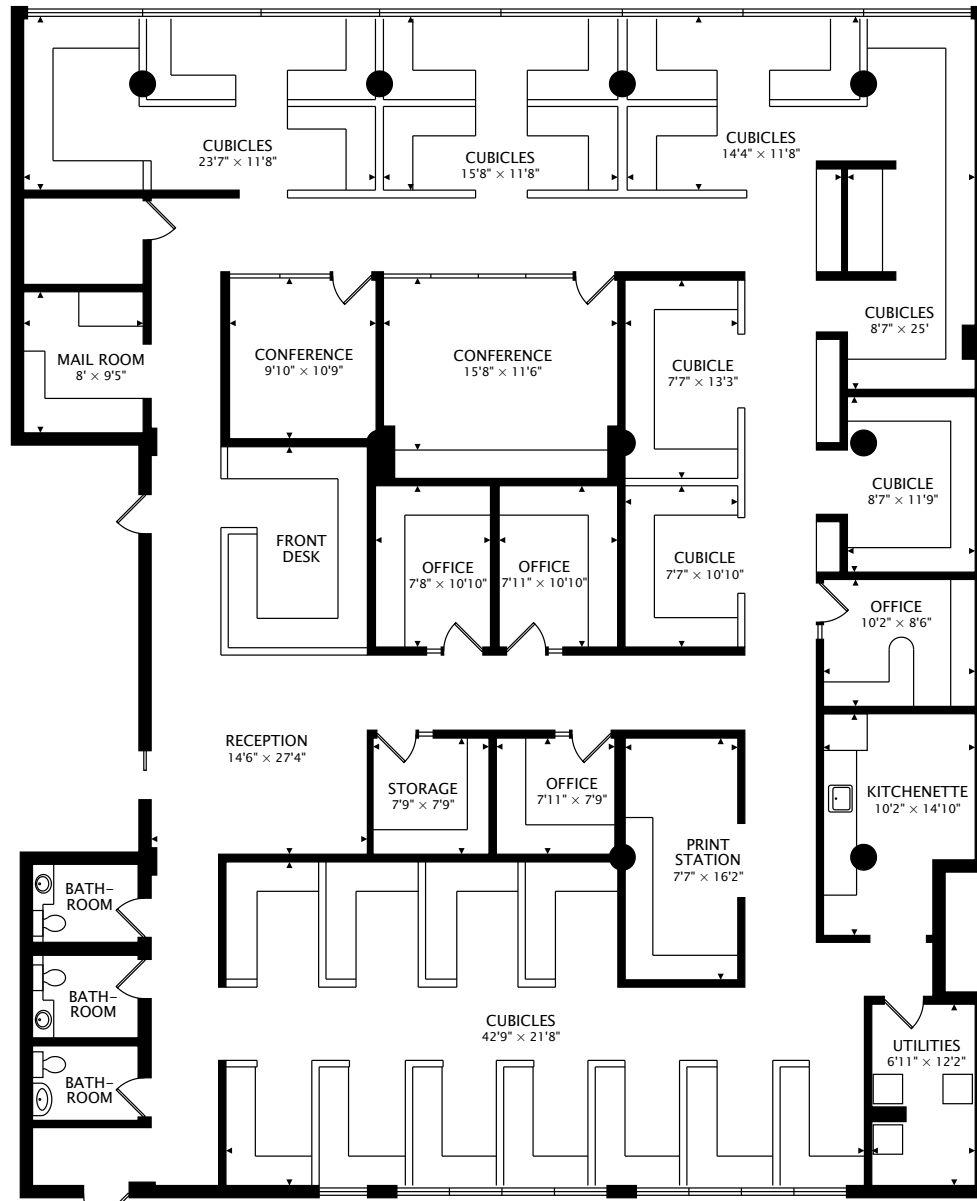


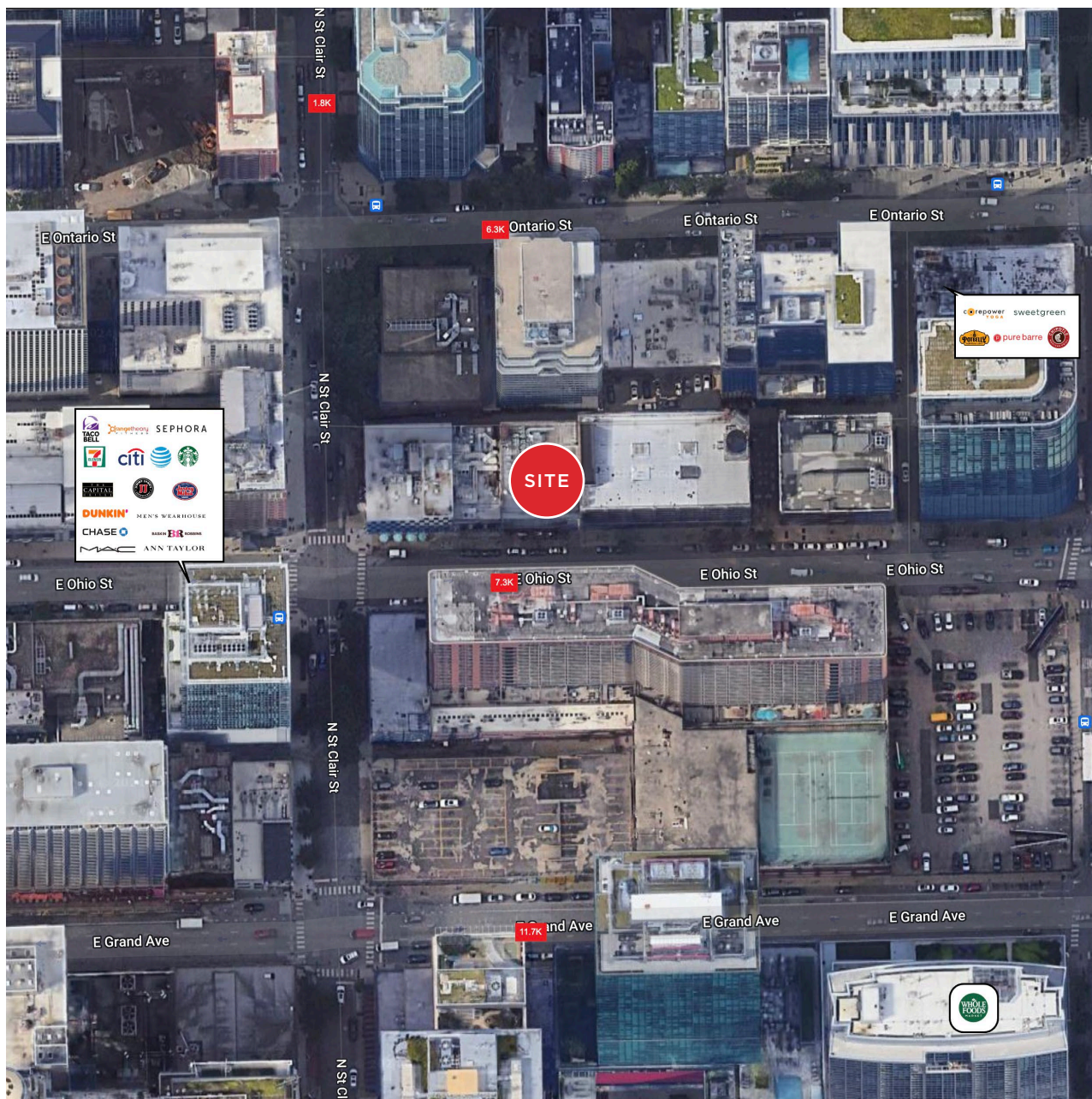
atpropertiescommercial.com

All information furnished is from sources deemed reliable. No representation is made as to the accuracy thereof and it is submitted subject to errors, omissions, changes, or withdrawal without notice.

@properties
COMMERCIAL

floor plans





retail and traffic information

Major development in recent years has put Streeterville on the map. In the past two decades alone, dozens of new buildings, high-rises, hotels, stores, and institutions have sprung up, bringing with them a flock of residents to the high-energy community. While the neighborhood offers a number of smaller “pocket” parks and playgrounds, the lakefront is the center of attention, and it’s never more than a couple of blocks away. While dining out is easy, deciding where go with so many great restaurant options is not.



demographics

	1 mile	3 mile	5 mile
2023 Estimated Population	99,873	341,181	746,648
2023 Estimated Households	69,469	205,834	401,052
2023 Estimated Average Household Income	\$191,231	\$182,561	\$162,305

atpropertiescommercial.com

All information furnished is from sources deemed reliable. No representation is made as to the accuracy thereof and it is submitted subject to errors, omissions, changes, or withdrawal without notice.

@properties
COMMERCIAL



MIKE ROURKE

312.505.1610

mrourke@atproperties.com