



## RÊVE Boulder

3000 Pearl Street, Boulder, CO

### Outstanding Restaurant or Retail Space For Lease at 30th & Pearl

**Angela Topel**

angela@gibbonswhite.com  
(303) 586-5921

**Michael-Ryan McCarty**

mccarty@gibbonswhite.com  
(303) 586-5939

**Patrick Weeks**

patrick@gibbonswhite.com  
(303) 586-5935

www.gibbonswhite.com

[Property Info & Gallery](#)

[View Map](#)

|                      |                       |
|----------------------|-----------------------|
| Available Space      | 2,456 - 2,575 sq. ft. |
| Lease Rate / sq. ft. | \$34.00 NNN           |
| Expenses / sq. ft.   | \$15.00*              |

*\*Not Including Utilities*

- Brand New Prestigious Retail, Restaurant, or Services Space Available Now with Spectacular Visibility & Significant Improvement Allowance Available
- RÊVE is a Mixed-Use Project in the Heart of Boulder Junction Featuring 242 Luxury Apartments & 118,000 sq. ft. Google Office
- Featuring Well-Manicured Pedestrian Plazas & Public Spaces to Encourage Community Gathering
- Adjacent to Google, RTD Park & Ride, Hyatt Place Hotel, Whole Foods, 29th Street Mall & Boulder Bike Trail System
- Unbeatable Signage & Exposure along Pearl & 30th
- On-Site Shared Parking with 549 Spaces

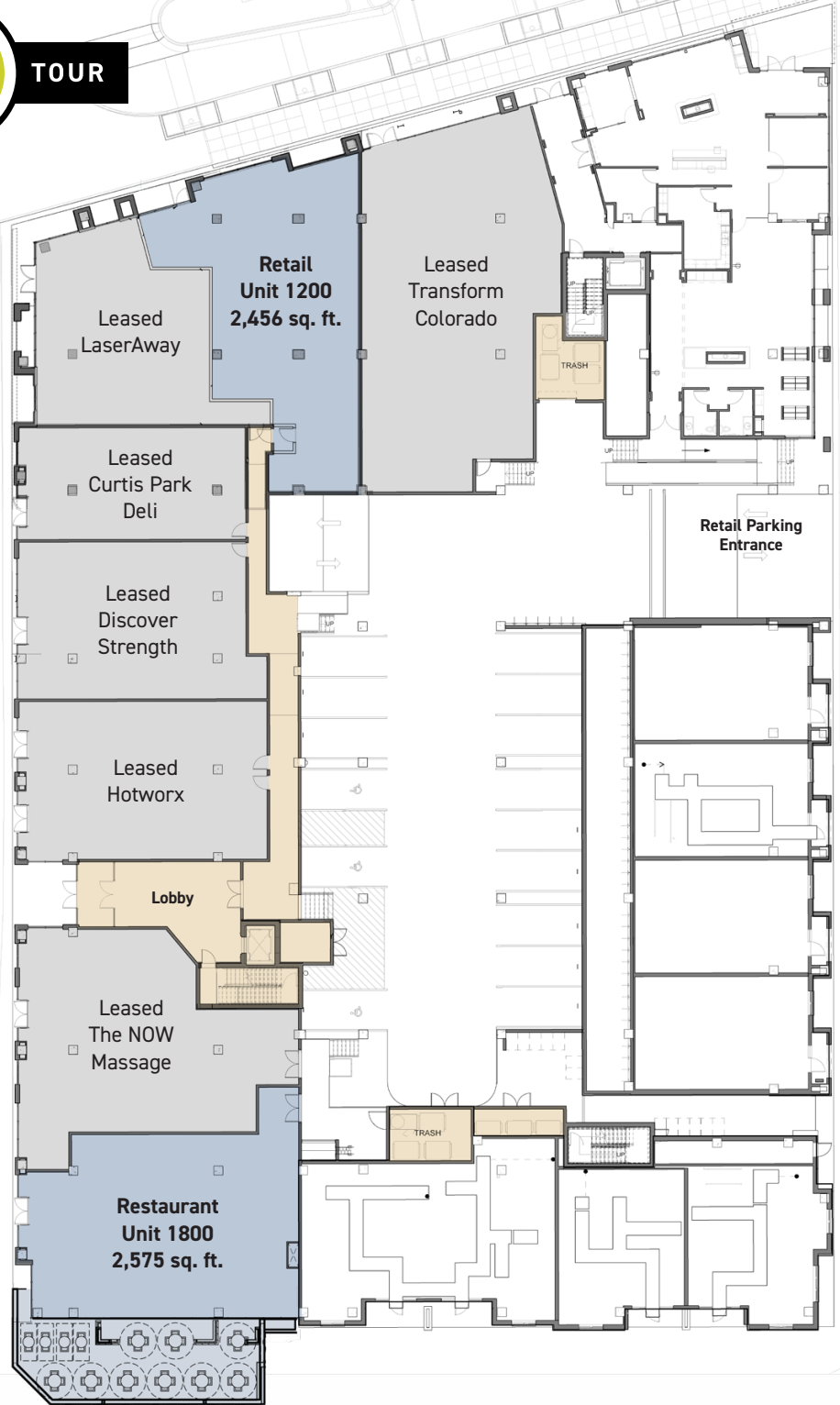
© 2025 Gibbons-White, Inc.

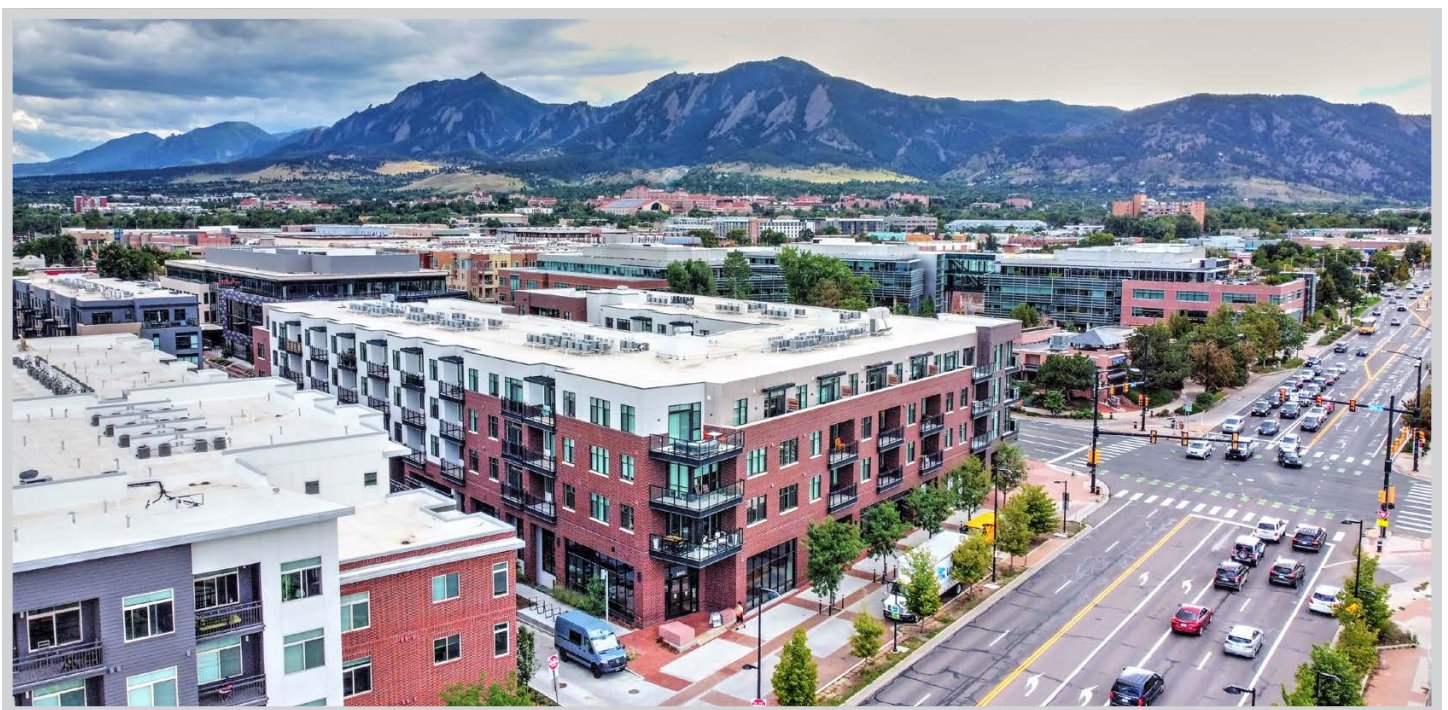
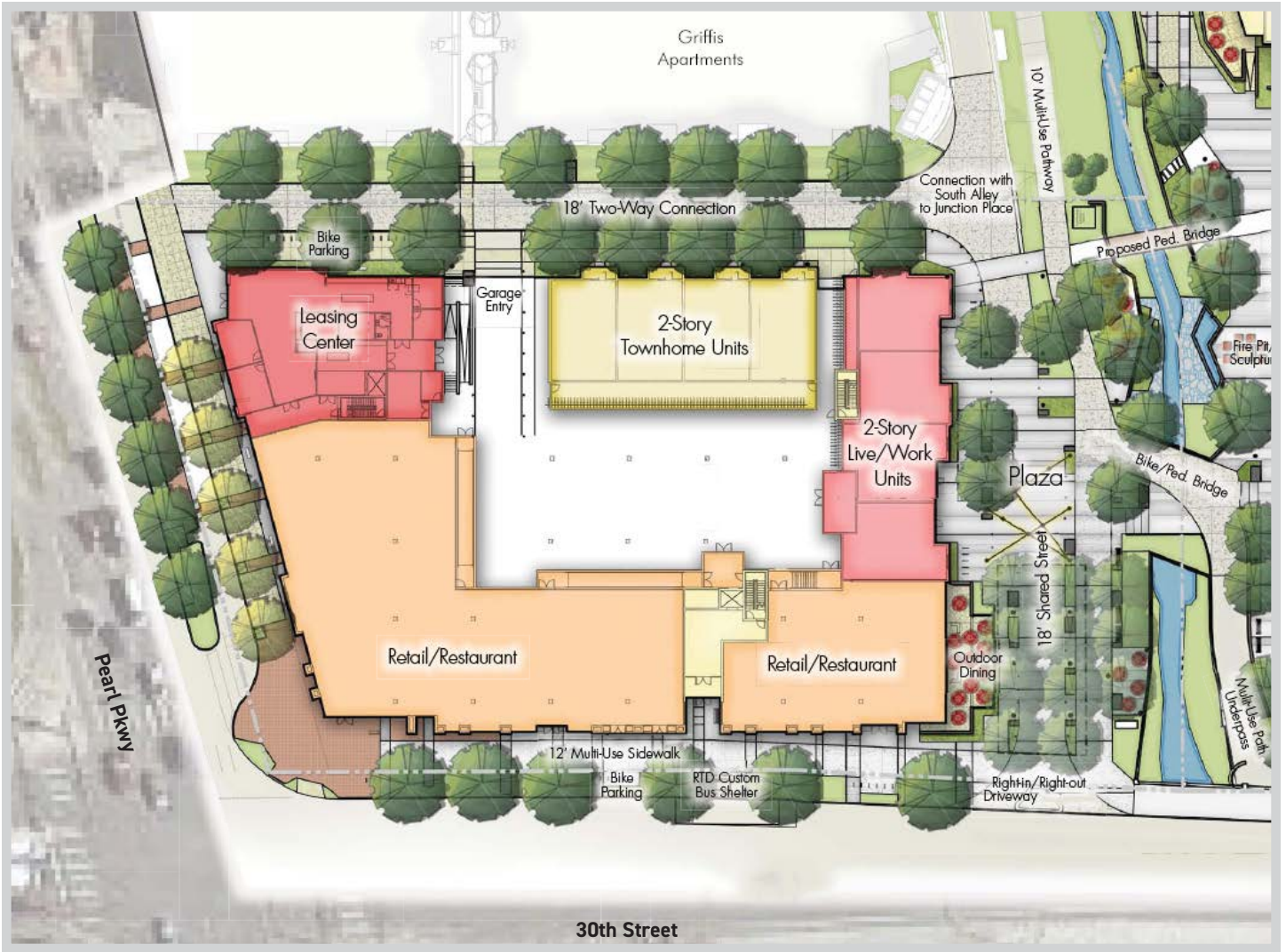
Ground Level Plan

PEARL STREET



30TH STREET

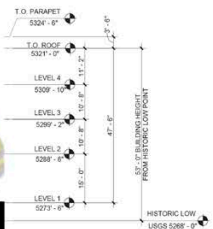




© 2025 Gibbons-White, Inc.



ELEVATION PLAN



2 BUILDING 1 - WEST - 30TH ST.  
1" = 5/16"