

# For Sale/Lease

## 25,500 SF Industrial Building

## 5500 McDermott Dr

Berkeley, Illinois 60163

### PROPERTY HIGHLIGHTS

5500 McDermott Dr. is a 25,500 SF building that features 1 interior dock, 1 drive-in door and 15'8" clear height. This hard-to-find sized building in the market for sale has 20 surface parking spaces, and close proximity to I-290, I-294.



25,500 SF  
BUILDING



15'8"  
CLEAR HEIGHT



1  
DRIVE-IN DOOR



1  
EXTERIOR DOCK



20  
SURFACE PARKING  
SPACES



400  
AMPS  
240  
VOLTS

### Contact

Joe Bronson  
+1 630 317 0725  
jbronson@hiffman.com

Paddy Dwyer  
+1 630 317 0794  
pdwyer@hiffman.com

Pat Clifford  
+1 630 317 0753  
pclifford@hiffman.com

One Oakbrook Terrace  
Suite 400  
Oakbrook Terrace, Illinois 60181  
+1 630 932 1234

NO WARRANTY OR REPRESENTATION, EXPRESS OR IMPLIED, IS MADE AS TO THE ACCURACY OF THE INFORMATION CONTAINED HEREIN, AND THE SAME IS SUBMITTED SUBJECT TO ERRORS, OMISSIONS, CHANGE OF PRICE, RENTAL OR OTHER CONDITIONS, PRIOR SALE, LEASE OR FINANCING, OR WITHDRAWAL WITHOUT NOTICE, AND OF ANY SPECIAL LISTING CONDITIONS IMPOSED BY OUR PRINCIPALS NO WARRANTIES OR REPRESENTATIONS ARE MADE AS TO THE CONDITION OF THE PROPERTY OR ANY HAZARDS CONTAINED THEREIN ARE ANY TO BE IMPLIED.



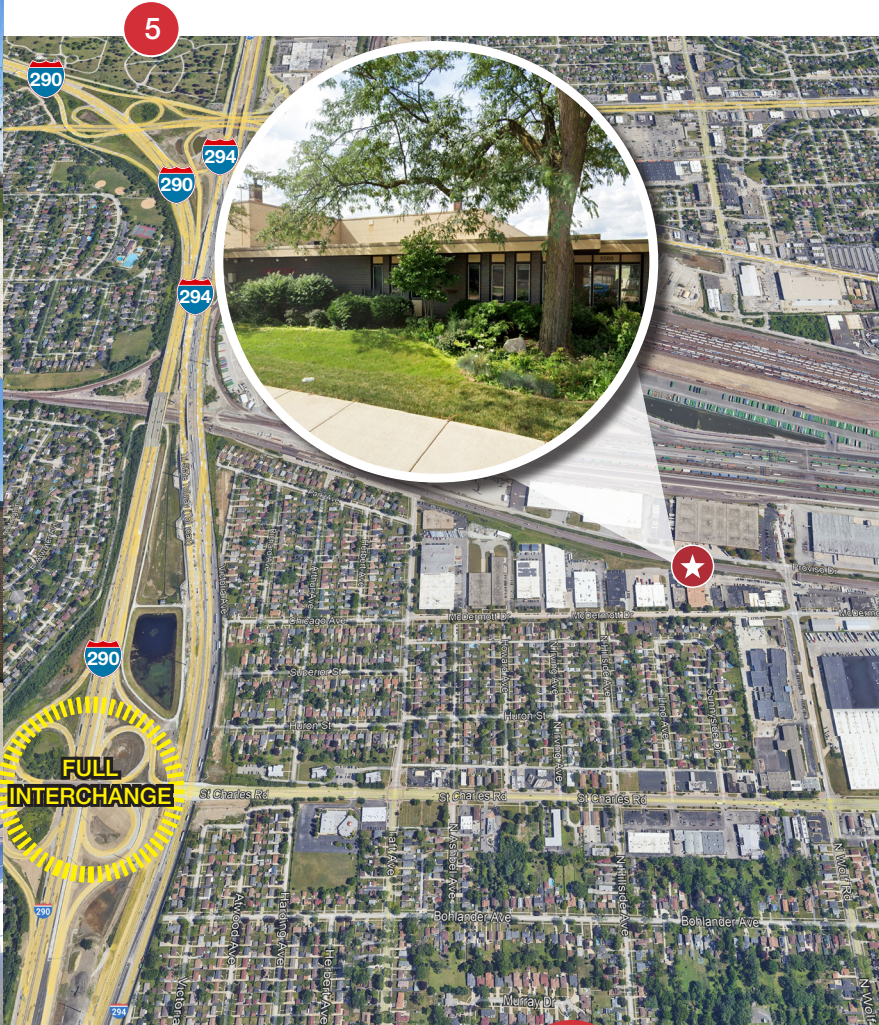


PHOTO GALLERY

- 1. Front of Building
- 2. Drive-in Door
- 3. Parking
- 4. Warehouse
- 5. Aerial Overview



CALL TO SCHEDULE A TOUR