

Nursery / Garden Center | For Sale

NURSERY / GARDEN CENTER

170 N 400 W Richfield,, UT 84701

850,000

Reduced!!
\$700,000



Outstanding Opportunity:

Located in Richfield, Utah, Anderson Garden Center & Greenhouse is a longstanding, beloved local business offering a vibrant selection of plants, flowers, and gardening supplies. With a reputation for “helpful and knowledgeable staff” and “excellent customer service,” this nursery has established itself as a trusted destination for both seasoned gardeners and beginners alike

Greenhouses

- Main Building, 3371 sqft foot. Built in 1938. Retail area, 2 walk in coolers, Lots of storage, and workspace areas.
- Main Greenhouse approx. 12,000 sqft.
- 3 Greenhouses approx. 2800 sqft each
- 1 Greenhouse approx 2500 sqft.
- 2 greenhouses approx. 1600 sqft each
- Shed 484 sqft with overhead door
- Open patio area for product displays
- Small greenhouse approx. 300 sqft
- Includes 2 delivery vans and trailer



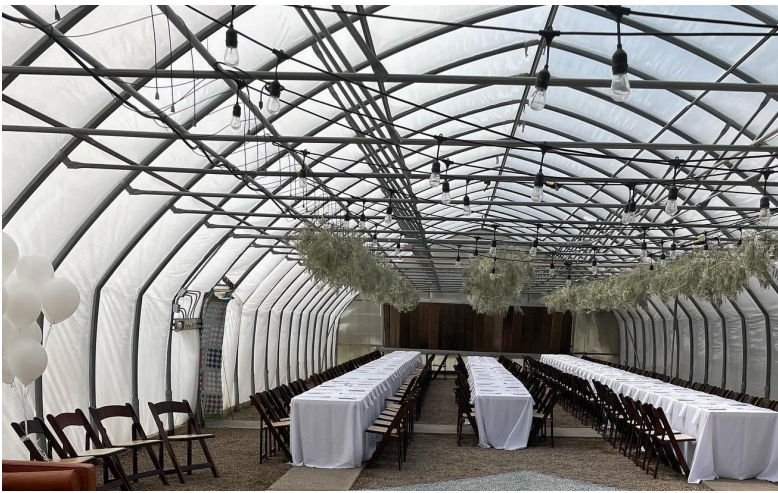
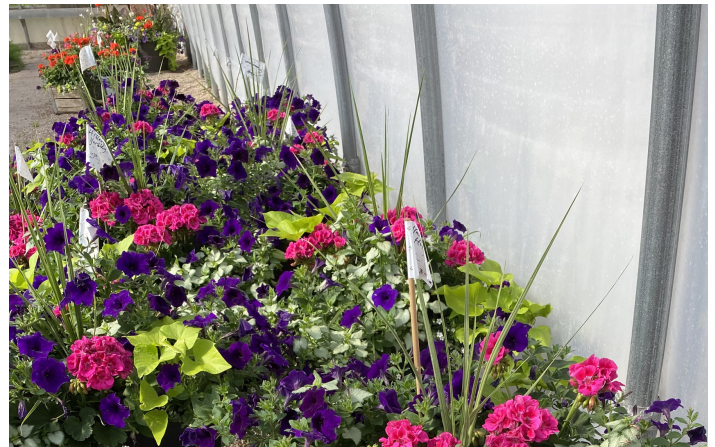
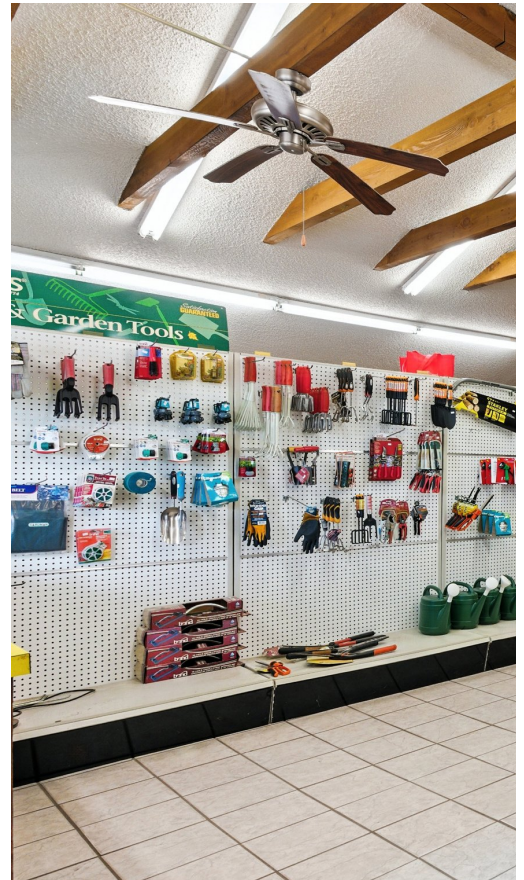


Birdseye Viewpoint



Additional Information

- Auto-misters
- Air Conditioning
- Fans
- Outdoor retail area
- 2 indoor retail areas
- 2 of the greenhouses the sides roll up for extra ventilation
- Beautifully maintained property.



Photos



Business and Community Information

70 proven years of business

This well-established nursery and garden center is being offered as a turnkey opportunity, including both business operations and prime real estate. Known throughout the community for its “great selection,” “best pricing,” and overall five-star satisfaction, it has built a loyal customer base that spans novice gardeners to seasoned green thumbs.

The center showcases vibrant seasonal displays—from marigolds and petunias to zinnias and alyssum—often spotlighted on social media for its colorful and comprehensive offerings. Customers consistently praise the “helpful and knowledgeable staff” committed to exceptional service and quality gardening products.

This is a rare chance to acquire a beloved local business backed by community goodwill, flourishing product variety, and a full operating site—an ideal investment for anyone eager to grow roots in Richfield’s horticultural market.

Supportive Business Ecosystem

Richfield is about selling and sustaining the community. The city serves as a regional trade center for smaller rural towns, which means business owners benefit from built-in demand. Equipment suppliers, feed stores, and service providers are close at hand. Snow College’s Richfield campus and Utah State University Extension programs provide resources and research to strengthen the community. With Sevier Valley Hospital, robust retail offerings, and financial institutions like Zions Bank nearby, the community infrastructure is strong and reliable for business owners and employees alike

Location & Logistics

Conveniently located along Interstate-70, Richfield connects easily to both the Wasatch Front markets and surrounding western states. This strategic location reduces transportation costs for moving products, nursery goods, and supplies.

Whether serving Utah’s growing population or exporting regionally, Richfield provides excellent highway access and is positioned for business expansion.

Surrounding Area Information

Surrounding Attractions that Strengthen Tourism Potential

Richfield's proximity to Fishlake National Forest, Fremont Indian State Park, and the popular Paiute ATV Trail draws steady tourism traffic, creating natural synergy for business owners interested in adding retail, tourism, or direct-to-consumer sales. From farm-to-table experiences and garden centers to seasonal events and festivals, the opportunities for diversification are abundant. Community & workforce Richfield boasts a loyal, hardworking population where local business is part of the community identity. Generational farming families, supportive civic leadership, and a strong small-business culture create an environment where businesses can thrive. Annual events such as the Sevier County Fair highlight the area's farming roots and foster continued appreciation for agricultural ventures.

