



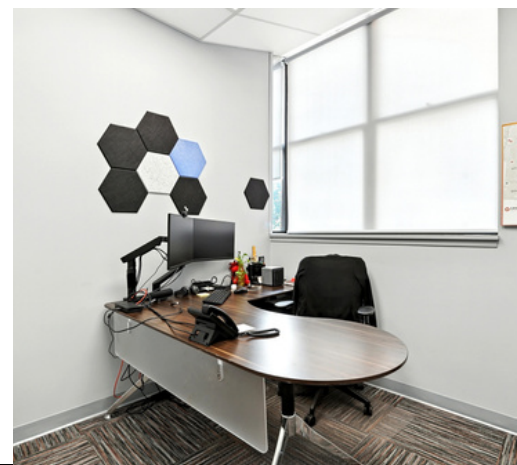
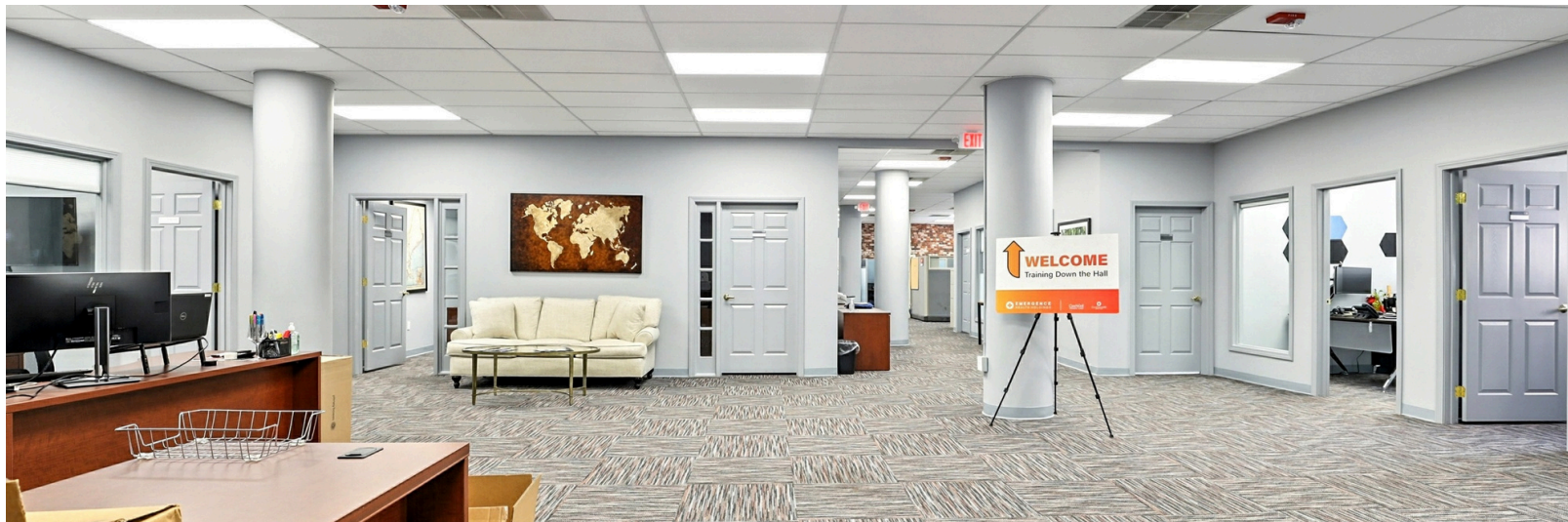
PRIME OFFICE
SPACE CLOSE TO
DOWNTOWN
CONCORD

FOR LEASE

**10 FERRY STREET,
CONCORD, NH 03301**

8,563 +/- SF FIRST CLASS OFFICE SPACE AVAILABLE

PROPERTY INFORMATION



FOR LEASE

SUITES 302A & 302B, 10 FERRY STREET, CONCORD, NH 03301
8563 ± \$16.00 PSF MODIFIED GROSS

DESCRIPTION:

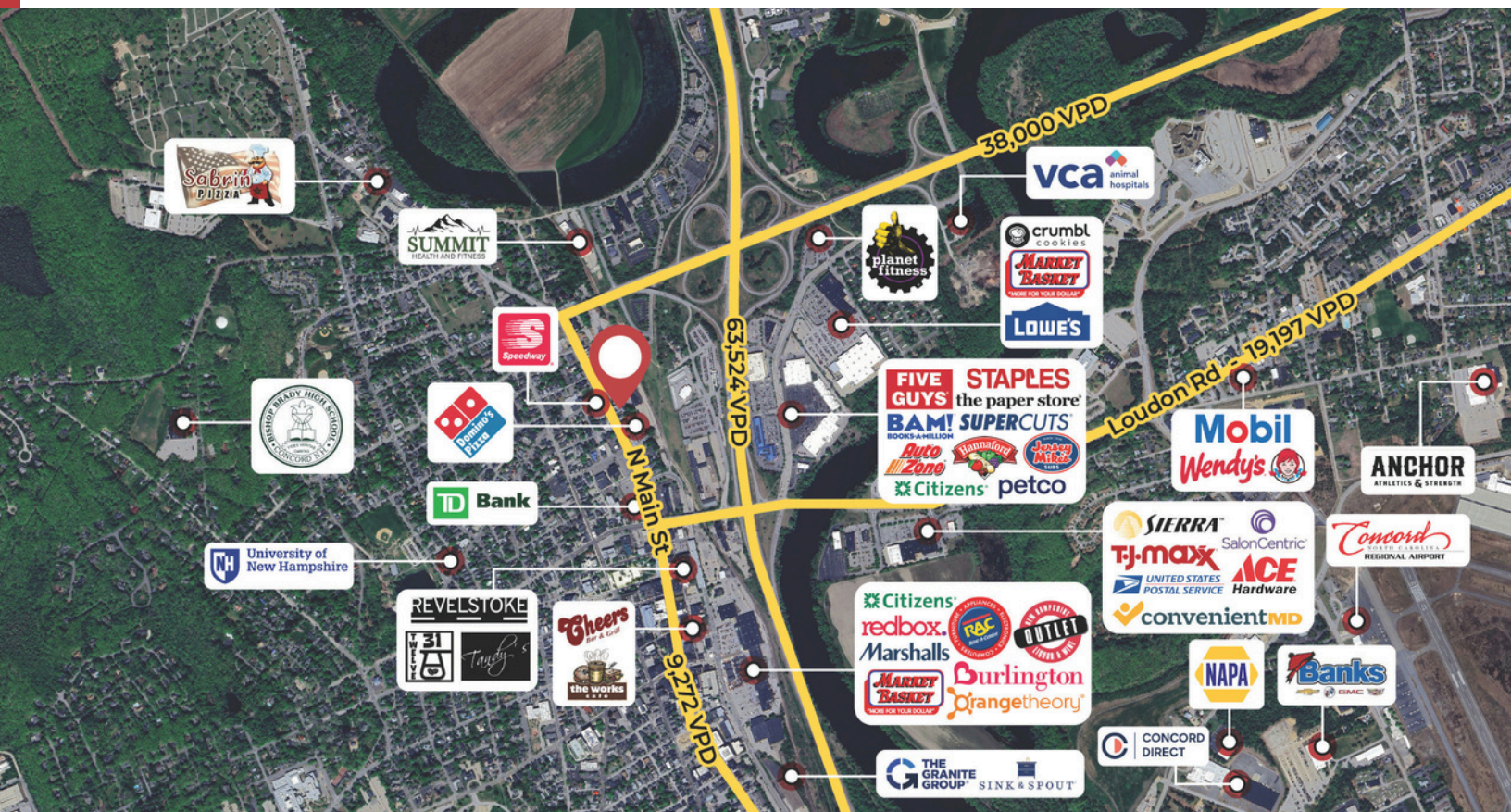
Sublease opportunity of prime office space close to downtown Concord. The space can come fully-furnished or emptied upon possession.

PROPERTY FEATURES:

- Ample Parking
- Class A space
- Central Air
- Close to Downtown Concord

[VIRTUAL TOUR LINK 1](#)
[VIRTUAL TOUR LINK 2](#)

DEMOGRAPHICS



2025 SUMMARY

2025 SUMMARY	2 MILE	5 MILE	10 MILE
Population	22,106	45,183	90,098
Households	9,559	19,187	37,591
Families	4,815	10,992	23,846
Avg HH Size	2.08	2.18	2.30
Median Age	42.6	43.6	43.9
Median HH Income	\$73,540	\$86,376	\$96,373
Avg HH Income	\$95,544	\$111,182	\$121,033

BUSINESSES (10 MILE)



5,248

TOTAL BUSINESSES



67,818

TOTAL EMPLOYEES

INCOME (10 MILE)



\$96,373

MEDIAN HH INCOME



\$50,514

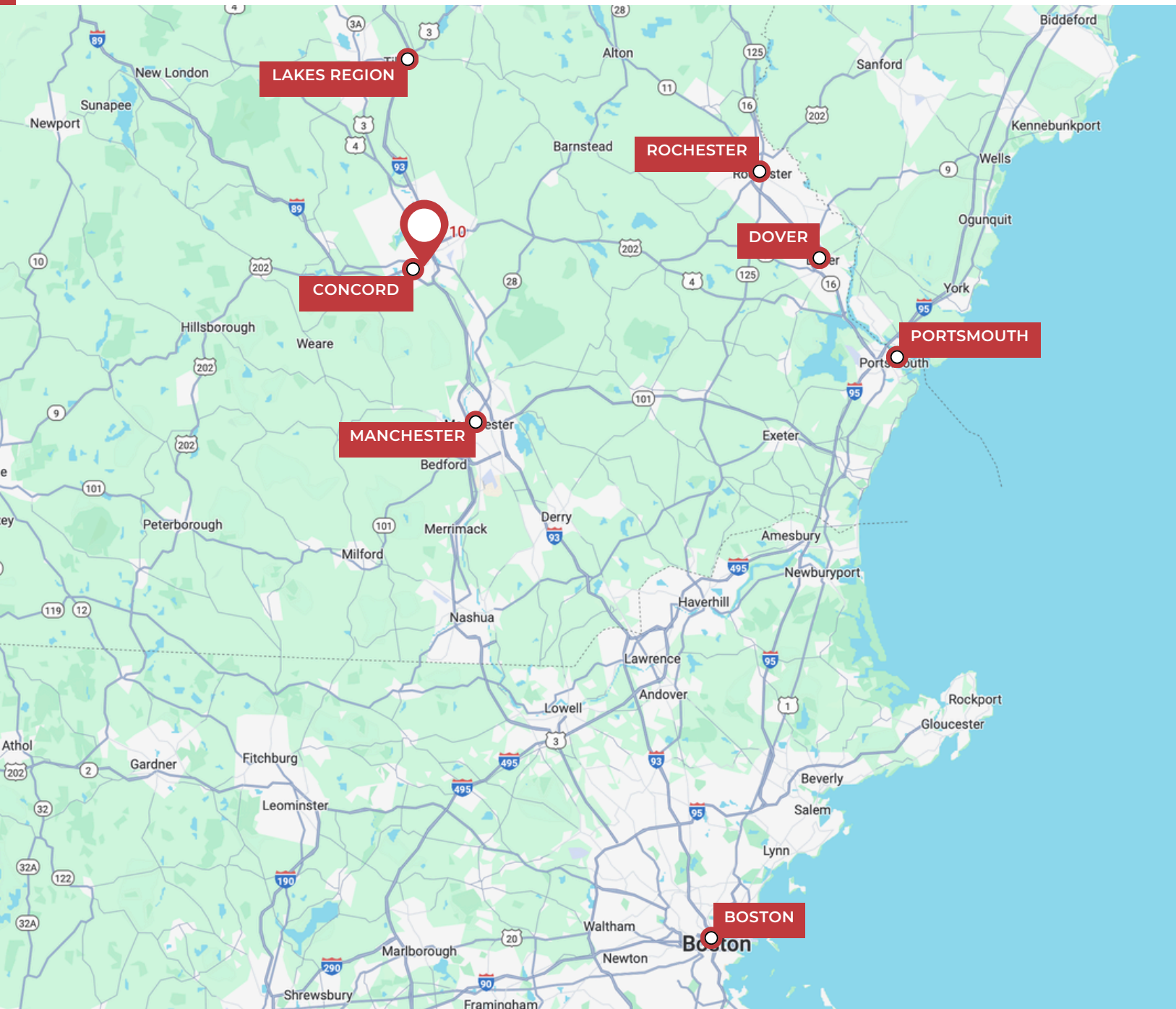
PER CAPITA INCOME



\$321,148

MEDIAN NET WORTH

MAP LOCATOR



DRIVE TIMES TO:

Manchester, NH 23 mins

Concord, NH 10 mins

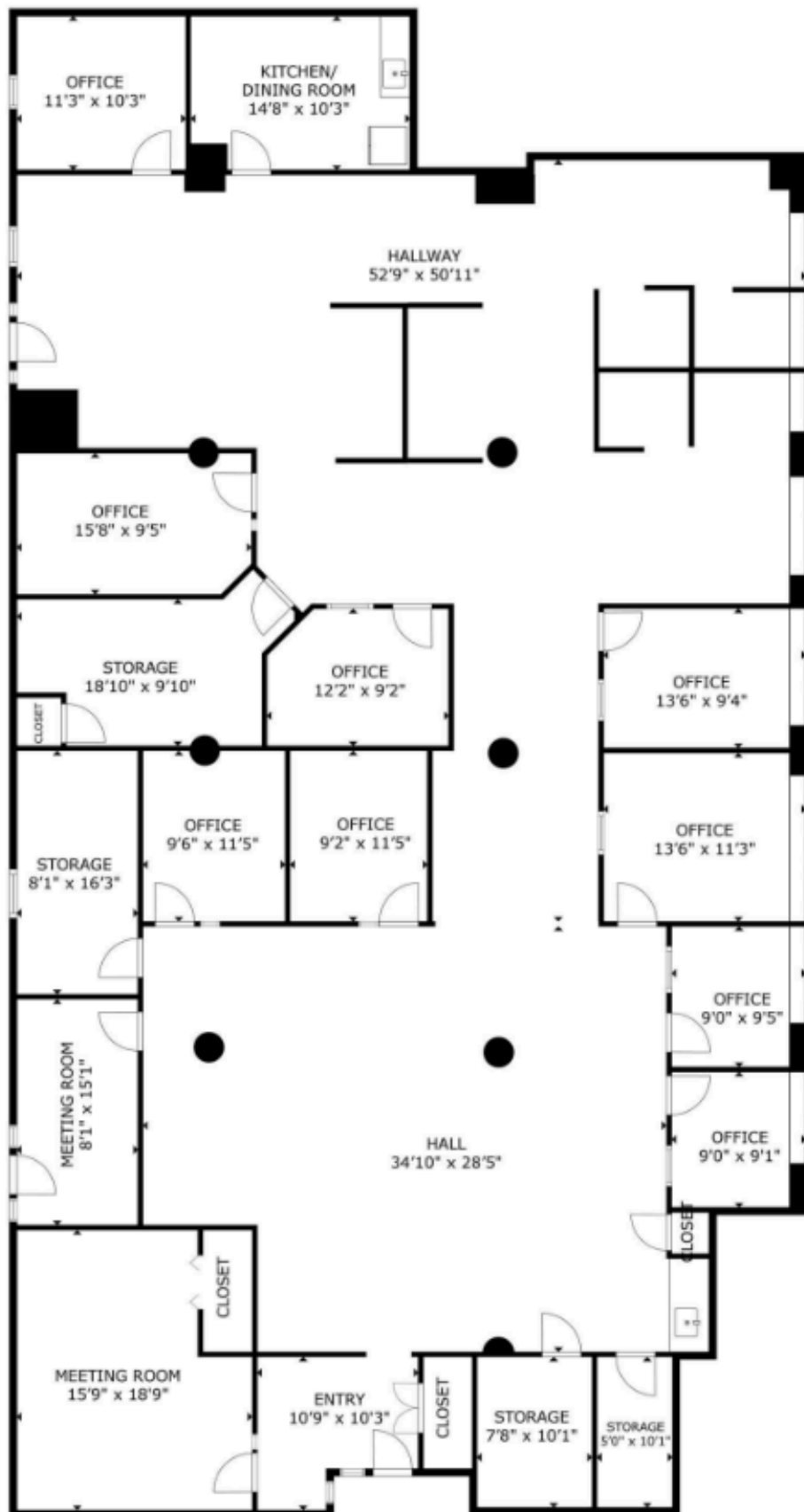
Boston, MA 1 h 8 mins

Lakes Region, NH 21 mins

Dover, NH 57 mins

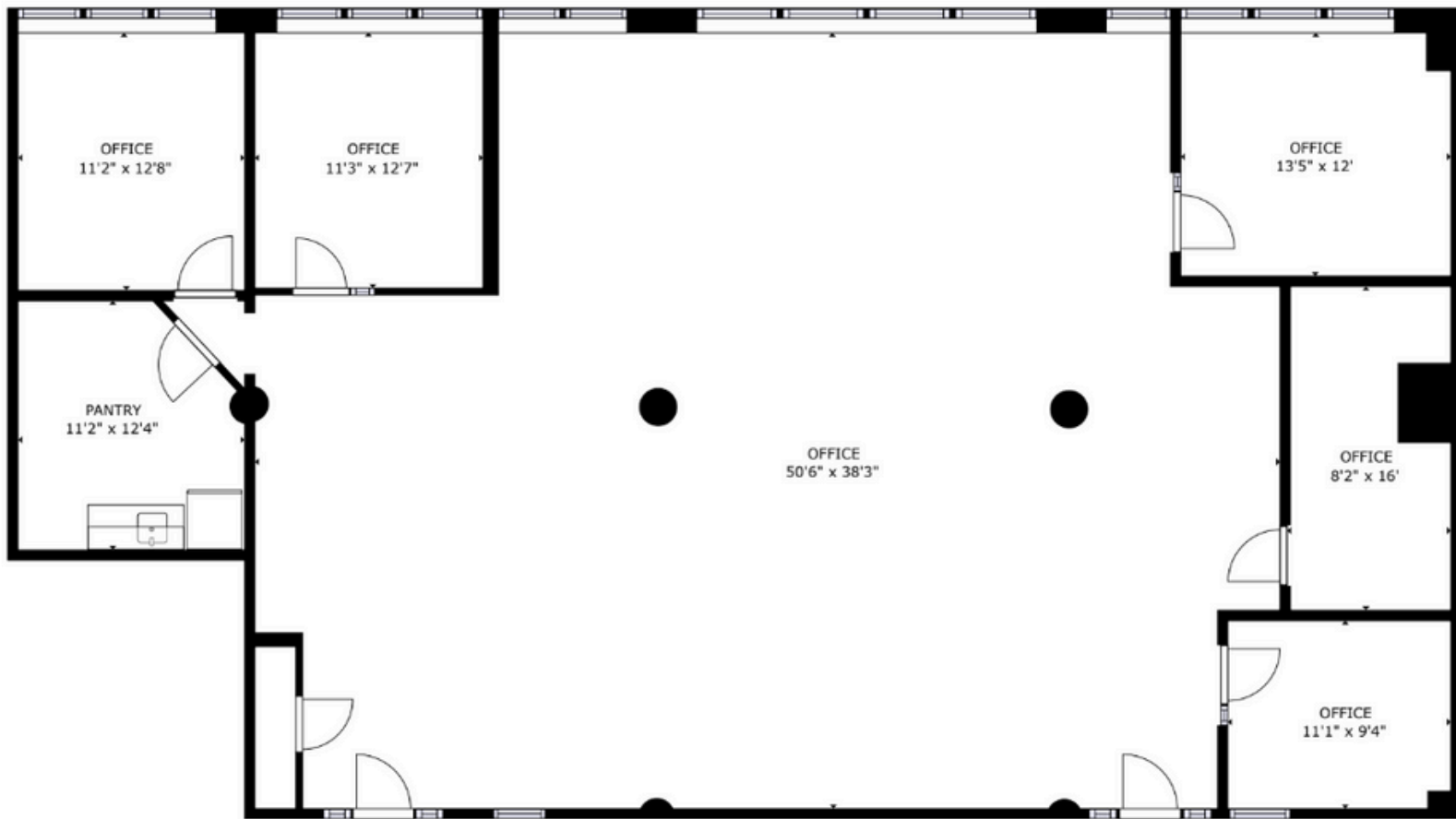
Portsmouth, NH 1 h 1 min

FLOOR PLAN Suite 302A



FLOOR PLAN

FLOOR PLAN Suite 302B



CONFIDENTIALITY & DISCLAIMER

THIS OFFERING IS SUBJECT TO THE FOLLOWING ASSUMPTIONS AND LIMITING CONDITIONS:

NAI Norwood Group assumes no responsibility for matter legal in character, nor do we render any opinion as to the title which is assumed to be good.

We believe the information furnished to us by the owners and others is reliable, but we assume no responsibility for its accuracy.

Buyers should not rely on this information, and Buyers should make their own investigation of any and all aspects.

PRESENTED BY:

MATT ROBINSON

ADVISOR

tel (603) 637-2237

mobile (603) 714-3426

mrobinson@nainorwoodgroup.com

NAI Norwood Group
Commercial Real Estate Services, Worldwide

NAI Norwood Group
116 South River Road
Bedford, NH 03110
www.nainorwoodgroup.com