



Office headquarters opportunity available in ideal NE Tampa corporate campus

- Suites from 4,465 to 24,615 RSF available
- \$28.50/sf full service
- 4.5/1,000 parking ratio
- Great northeast Tampa location in Highwoods Preserve - join corporate neighbors like Depository Trust & Clearing Corporation, The Coca-Cola Corporation and MetLife
- Numerous retail, restaurant and convenience options in close proximity: Glory Days, Chili's, Chipolte, Subway, Chick Fil A, Panera Bread, Circle K, 7-11, CVS, Walgreens and more

Get more information

Anne-Marie Ayers

Principal

+1 813 444 0620

annemarie.ayers@avisonyoung.com

Laurie Hynes

Sr. Client Services Coordinator

+1 813 444 0621

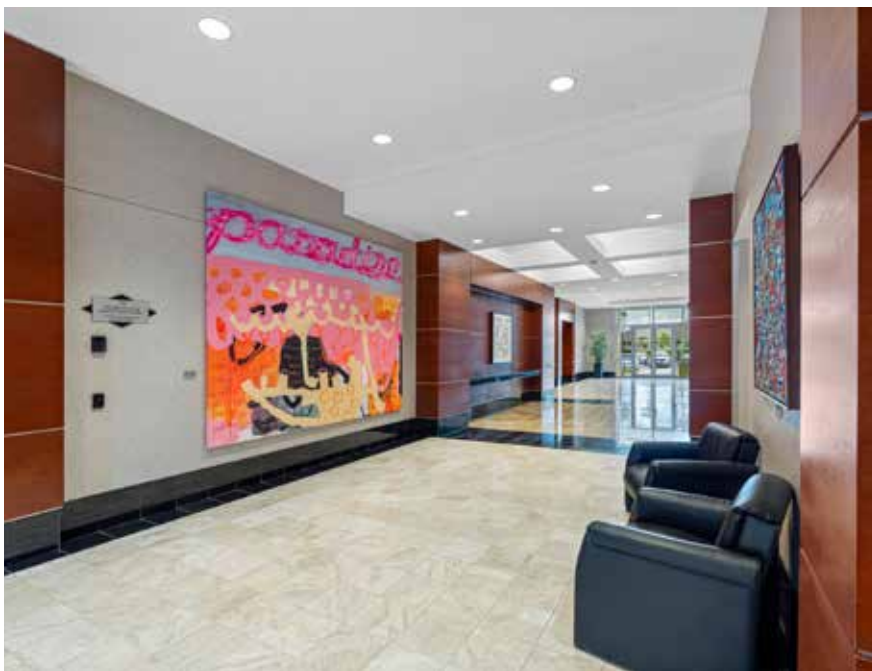
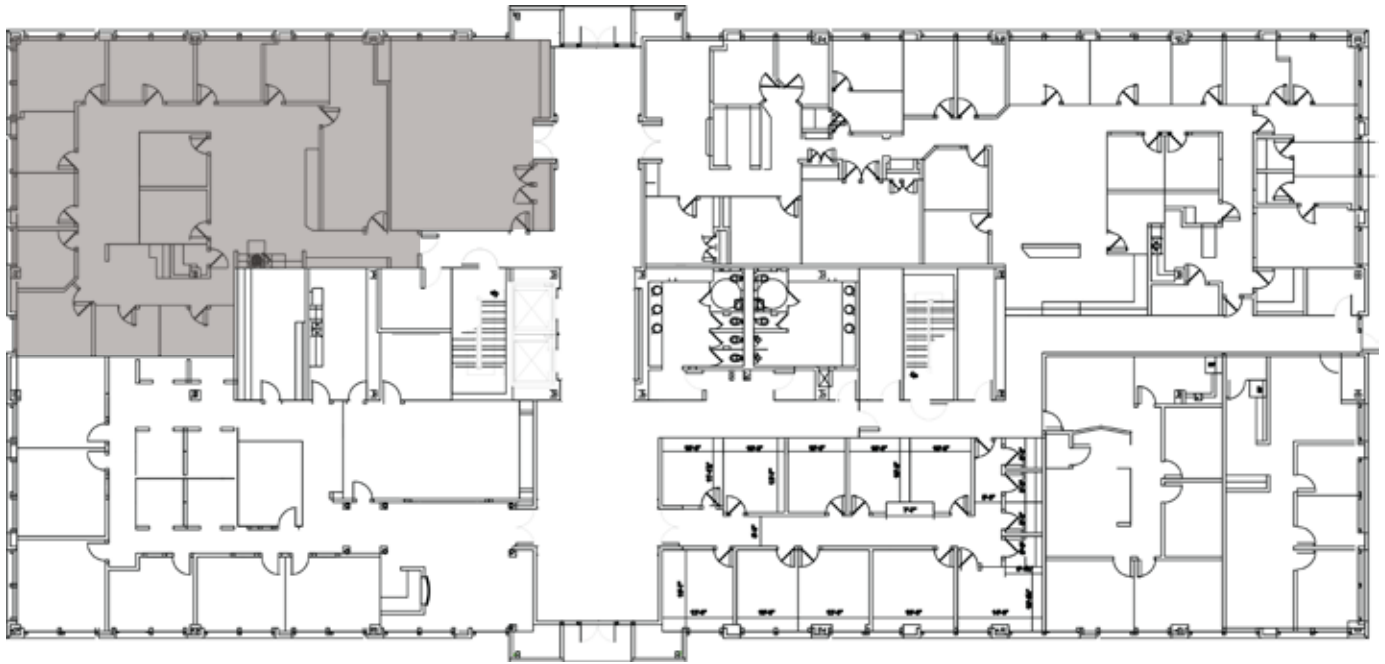
laurie.hynes@avisonyoung.com

avisonyoung.com

Burns & Wilcox Center
18302 Highwoods Preserve Parkway
Tampa, FL 33647

FirstFloor

Suite 101
4,465 rsf



Burns & Wilcox Center
18302 Highwoods Preserve Parkway
Tampa, FL 33647

Second Floor

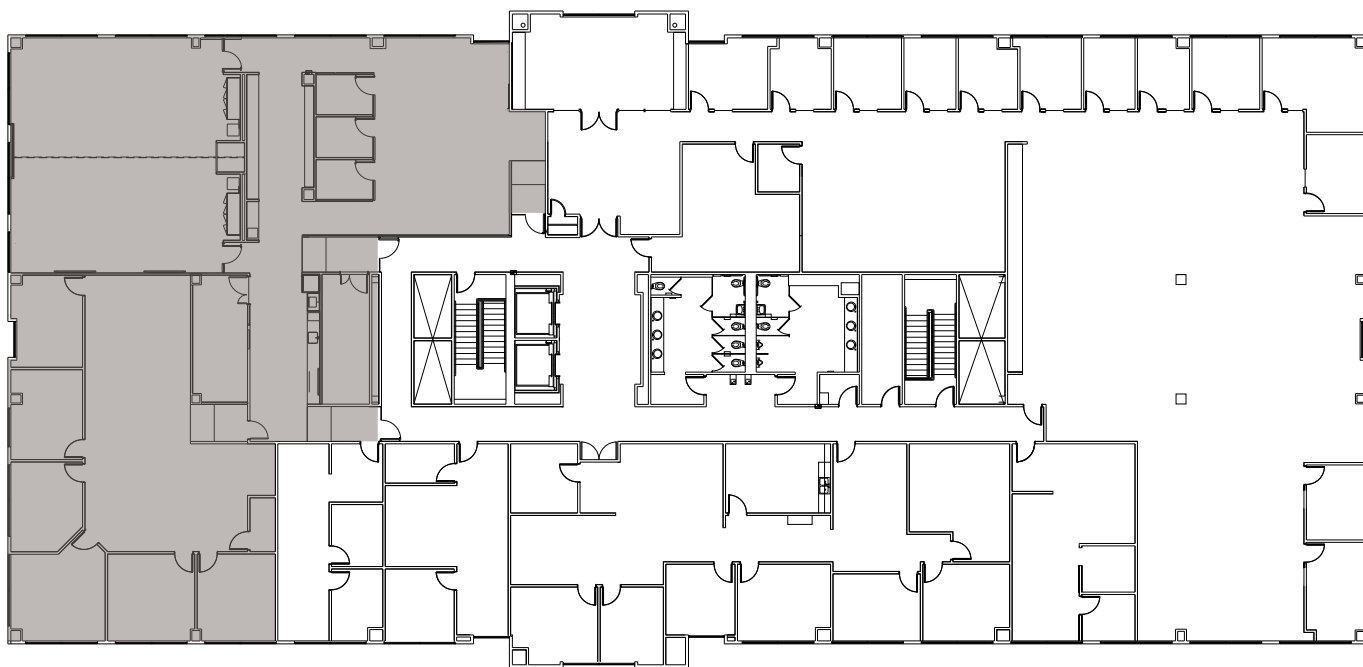
Suite 200
24,615 rsf



Burns & Wilcox Center
18302 Highwoods Preserve Parkway
Tampa, FL 33647

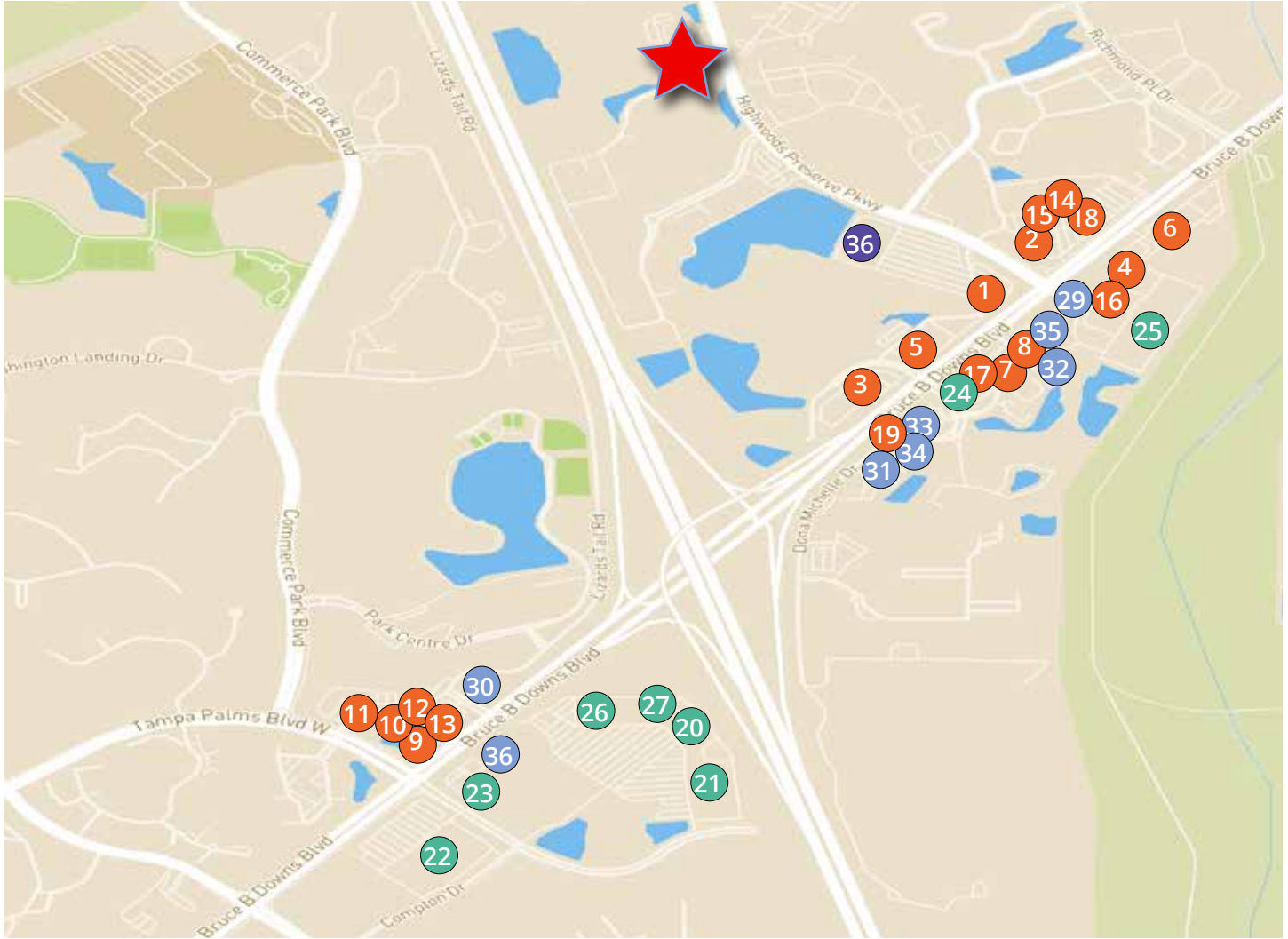
Third Floor

Suites 320-326
7,588 rsf



Amenities Map

Burns & Wilcox Center
18302 Highwoods Preserve Parkway
Tampa, FL 33647



RESTAURANTS

1. Aldi
2. Chipotle
3. Glory Days
4. KFC
5. Tijuana Flats
6. Chili's
7. Liang's Bistro
8. Steak n' Shake
9. Red Lobster
10. Olive Garden
11. Ciccio Cali
12. Stonewood Grill & Tavern
13. McDonalds
14. Westshore Pizza

15. Dunkin Donuts

16. Quiznos
17. Chick-fil-A
18. Panera Bread
19. Taco Bell

SHOPPING

20. PetSmart
21. BJ's Wholesale Club
22. Lowe's
23. CVS Pharmacy
24. Walgreens
25. The Home Depot
26. Ross Dress for Less
27. Joann

BANKS AND GAS

29. 7-Eleven
30. 7-Eleven
31. Grow Financial Federal CU
32. Suncoast Credit Union
33. Shell
34. Circle K
35. Speedway

ENTERTAINMENT

36. AMC Highwoods 20

**Get more
information**

Anne-Marie Ayers
Principal
+1 813 444 0620

Laurie Hynes
Sr. Client Services Coordinator
+1 813 444 0621

**AVISON
YOUNG**