

FOR SALE:

MANUFACTURING/OFFICE COMPLEX



Manufacturing/office complex available for sale. The site is located in an industrial pocket within the Broadway District. The Broadway District is a highly desirable, vibrant area comprised of a mix of industrial, office, restaurants, entertainment venues, as well as many local and national businesses..

There are 4 facilities included, with a total of 1.713 acres.

- 3 manufacturing buildings
- a warehouse
- a duplex/office building
- 2 parking lots

The total complex is available for \$2,700,000.

COMPLEX INCLUDES

<u>Address</u>	<u>Building Size</u>
327 S Broadway	9,268 sf
301 Bridge Street	32,583 sf
306 & 310 S Pearl Street	15,277 sf
309 & 315 S Broadway	2,924 sf



RE Commercial LLC
677 Baeten Rd, Green Bay, WI
920-997-3334
www.recommercialwi.com

Todd DeVillers, CCIM, SIOR
Managing Partner
920-470-7573
todd.devillers@recwi.com

Individual Property Details

327 S BROADWAY



Building Size	9,268 sf
Total Lot Size	0.39 acres
Overhead Doors	3
Ceiling Height	13'
Year Built	1966
Construction	Block and brick; metal roof
Parcel #	3-563
Zoning	Downtown One
Taxes	\$3,200.53

Located just off the northeast corner of South Broadway and Arndt Street in Green Bay, WI. This 9,268 sf warehouse offers 12'-13' sidewalls, 3 overhead doors, and an adjacent parking lot.

301 S BRIDGE STREET



Building Size	32,583 sf (divisible)
Total Lot Size	0.78 acres
# of floors	2, plus basement
Overhead Doors	2
Loading Docks	4
Ceiling Height	12' -28'
Year Built	1900, addition 1990
Parcel #s	3-559 and 3-562
Zoning	Light Industrial
Taxes	\$9,1787.11

Located on the northwest corner of Arndt and Pearl Streets. The total size of this manufacturing/warehouse building is ±32,583 sf. Building offers 2 overhead doors, and 4 loading docks .



Individual Property Details

306 & 310 S PEARL STREET



Total Building Size	15,277sf
Total Lot Size	0.44 acres
Overhead Doors	3
Loading Dock	1
Year Built	1950, addition 1980
Parcel #s	3-640 and 3-640-A
Zoning	Light Industrial
Taxes	\$6,787.81

Located on the northwest corner of South Pearl and Bridge Streets in Green Bay, WI. This manufacturing facility was originally constructed as 2 separate buildings and was later connected. Building has a storage mezzanine, a loading dock, and 3 overhead doors.

309 & 315 S BROADWAY



Building Size	2,924 sf
Total Lot Size	0.206 acres
Year Built	100+
Parcel #s	3-644 and 3-645
Zoning	Downtown One
Taxes	\$3,666.18

Located on the northeast corner of South Broadway and Bridge Street. This 2-story building was formally a single-family dwelling, and is currently set up as a duplex/office. Property includes several , a full basement, a 620 sf attached garage, and an adjacent parking lot.

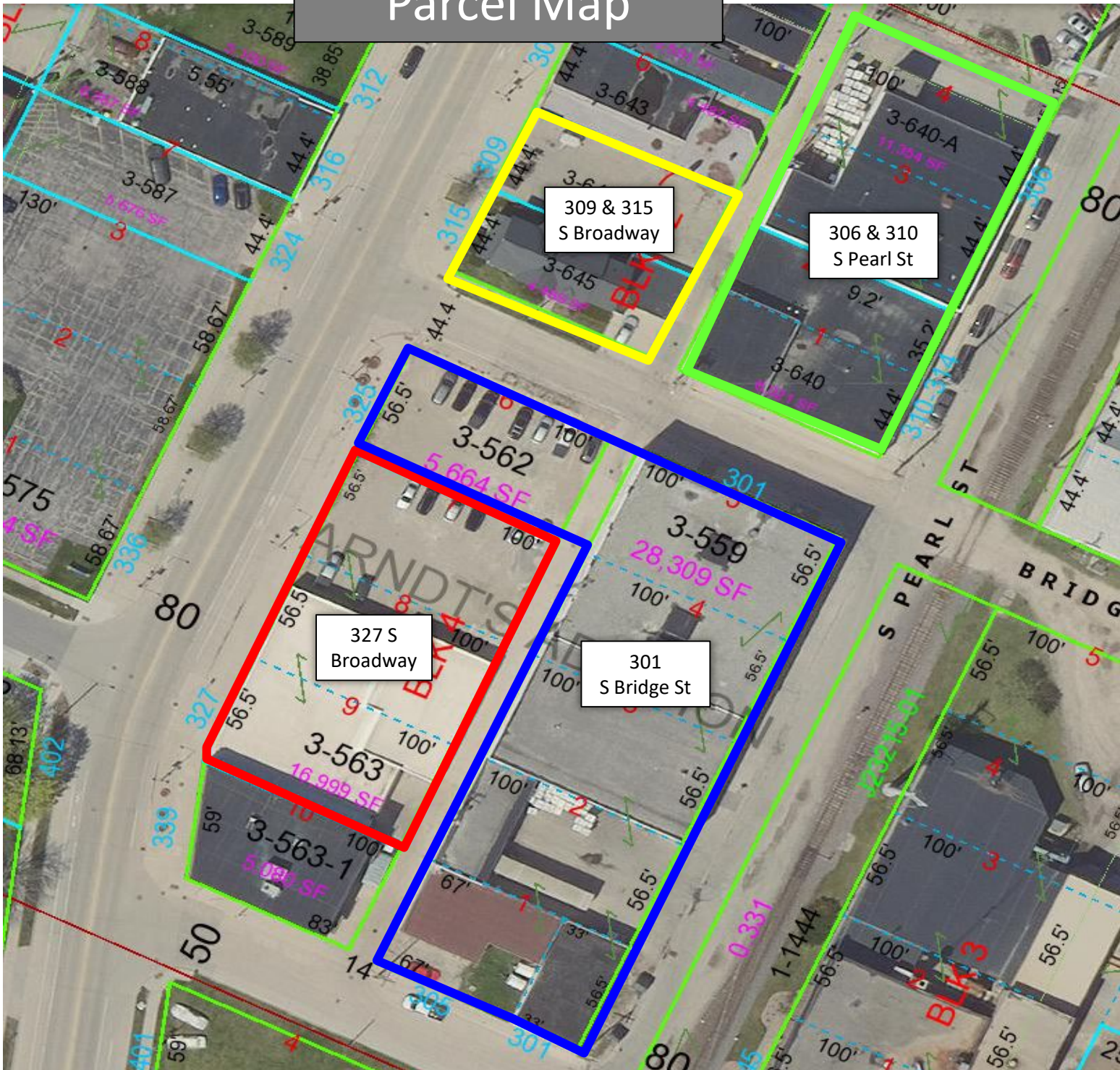
Todd DeVillers, CCIM, SIOR
Managing Partner
920-470-7573
todd.devillers@recwi.com

RE Commercial LLC
677 Baeten Rd, Green Bay, WI
920.997.3334
www.recommercialwi.com



FOR SALE: MANUFACTURING/OFFICE COMPLEX

Parcel Map



All of the information furnished in this brochure is believed to be accurate in all rational respects and was obtained from source(s) reasonably believed to be reliable. However, RE Commercial LLC has not verified the accuracy of such information and makes no guarantees, warranties or representations about the accuracy and validity of such information or its source(s). The information provided herein is subject to the possibility of errors, omissions and/or changes relating to the price, condition and/or any other circumstance without notice. RE Commercial LLC shall not be liable for any losses or damages, including, without limitation, any indirect or consequential losses or damages, whatsoever, arising from or out of the reliance on the accuracy and validity of the information provided for herein.

Todd DeVillers, CCIM, SIOR
Managing Partner
920-470-7573
todd.devillers@recwi.com

RE Commercial LLC
677 Baeten Rd, Green Bay, WI
920.997.3334
www.recommercialwi.com



DISCLOSURE TO NON-RESIDENTIAL CUSTOMERS

1 Prior to negotiating on your behalf the brokerage firm, or an agent associated with the firm, must provide you the
2 following disclosure statement:

3 **DISCLOSURE TO CUSTOMERS** You are a customer of the brokerage firm (hereinafter Firm). The Firm is either an agent
4 of another party in the transaction or a subagent of another firm that is the agent of another party in the transaction. A
5 broker or a salesperson acting on behalf of the Firm may provide brokerage services to you. Whenever the Firm is
6 providing brokerage services to you, the Firm and its brokers and salespersons (hereinafter Agents) owe you, the
7 customer, the following duties:

- 8 (a) The duty to provide brokerage services to you fairly and honestly.
- 9 (b) The duty to exercise reasonable skill and care in providing brokerage services to you.
- 10 (c) The duty to provide you with accurate information about market conditions within a reasonable time if you request
11 it, unless disclosure of the information is prohibited by law.
- 12 (d) The duty to disclose to you in writing certain Material Adverse Facts about a property, unless disclosure of the
13 information is prohibited by law (see lines 42-51).
- 14 (e) The duty to protect your confidentiality. Unless the law requires it, the Firm and its Agents will not disclose your
15 confidential information or the confidential information of other parties (see lines 23-41).
- 16 (f) The duty to safeguard trust funds and other property held by the Firm or its Agents.
- 17 (g) The duty, when negotiating, to present contract proposals in an objective and unbiased manner and disclose the
18 advantages and disadvantages of the proposals.

19 Please review this information carefully. An Agent of the Firm can answer your questions about brokerage services,
20 but if you need legal advice, tax advice, or a professional home inspection, contact an attorney, tax advisor, or home
21 inspector. This disclosure is required by section 452.135 of the Wisconsin statutes and is for information only. It is a
22 plain-language summary of the duties owed to a customer under section 452.133(1) of the Wisconsin statutes.

23 **CONFIDENTIALITY NOTICE TO CUSTOMERS** The Firm and its Agents will keep confidential any information given to the
24 Firm or its Agents in confidence, or any information obtained by the Firm and its Agents that a reasonable person
25 would want to be kept confidential, unless the information must be disclosed by law or you authorize the Firm to
26 disclose particular information. The Firm and its Agents shall continue to keep the information confidential after the
27 Firm is no longer providing brokerage services to you.

- 28 The following information is required to be disclosed by law:
- 29 1. Material Adverse Facts, as defined in Wis. Stat. § 452.01(5g) (see lines 42-51).
 - 30 2. Any facts known by the Firm or its Agents that contradict any information included in a written inspection
31 report on the property or real estate that is the subject of the transaction.

32 To ensure that the Firm and its Agents are aware of what specific information you consider confidential, you may
33 list that information below (see lines 35-41) or provide that information to the Firm or its Agents by other means. At a
34 later time, you may also provide the Firm or its Agents with other Information you consider to be confidential.

35 **CONFIDENTIAL INFORMATION:** _____
36 _____
37 _____

38 **NON-CONFIDENTIAL INFORMATION** (the following information may be disclosed by the Firm and its Agents): _____
39 _____
40 _____
41 _____ (Insert information you authorize to be disclosed, such as financial qualification information.)

42 **DEFINITION OF MATERIAL ADVERSE FACTS**
43 A "Material Adverse Fact" is defined in Wis. Stat. § 452.01(5g) as an Adverse Fact that a party indicates is of such
44 significance, or that is generally recognized by a competent licensee as being of such significance to a reasonable
45 party, that it affects or would affect the party's decision to enter into a contract or agreement concerning a transaction
46 or affects or would affect the party's decision about the terms of such a contract or agreement.

47 An "Adverse Fact" is defined in Wis. Stat. § 452.01(1e) as a condition or occurrence that a competent licensee
48 generally recognizes will significantly and adversely affect the value of the property, significantly reduce the structural
49 integrity of improvements to real estate, or present a significant health risk to occupants of the property; or information
50 that indicates that a party to a transaction is not able to or does not intend to meet his or her obligations under a
51 contract or agreement made concerning the transaction.

52 **NOTICE ABOUT SEX OFFENDER REGISTRY** You may obtain information about the sex offender registry and persons
53 registered with the registry by contacting the Wisconsin Department of Corrections on the Internet at
54 <http://www.doc.wi.gov> or by telephone at 608-240-5830.

No representation is made as to the legal validity of any provision or the adequacy of any provision in any specific transaction.
Copyright © 2016 by Wisconsin REALTORS® Association Drafted by Attorney Debra Peterson Conrad