

SALE

11316 WEST WADSWORTH ROAD IN BEACH PARK IL 60099

RE-DEVELOPMENT SITE



OFFERING SUMMARY

Sale Price	\$665,000
Building Size	18,000 SF
Lot Size 1.83+ Acre	80,075 SF
Additional 5-Acres	\$300,000
Taxes 2022 / Pin 042940112	\$16,685

PROPERTY OVERVIEW

Wonderful 1.83+ Acres With Terrific 2-Story Medical Office Building With Plenty of Parking To Convert or Redevelop, That Has Primary School Across The Street & City Hall of Beach Park Just Next Door. Beach Park Will Support Future Site Development Through PUD Process. Note: Additional 5-Acres Available To Build @ \$300,000.

POSSIBLE USES ARE MEDICAL OFFICES / EDUCATIONAL SERVICES / RETAIL SPACES

Sheryl Fisher

Commercial Broker

312 988 9070

sherylfisher@cbcncr.com



**COLDWELL BANKER
COMMERCIAL
REALTY**

SALE

11316 WEST WADSWORTH ROAD IN BEACH PARK IL 60099

PHOTO GALLERY



Front Building Facade + Parking



Rear Garage



Rear Building Facade + Parking



Building Interior First Floor Lobby



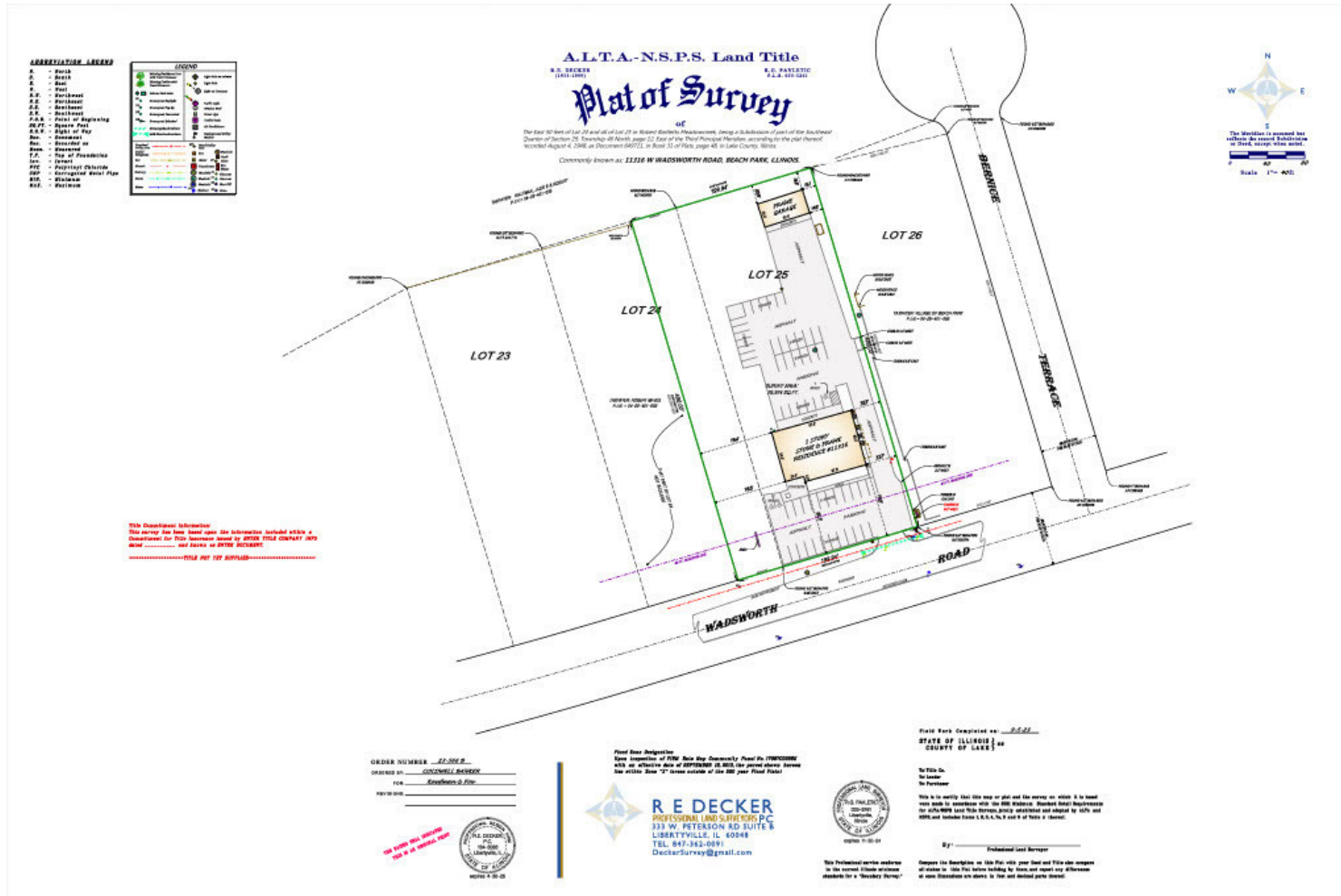
Building Interior First Floor Office

Sheryl Fisher
Commercial Broker
312 988 9070
sherylfisher@cbcncr.com



SALE

11316 WEST WADSWORTH ROAD SURVEY



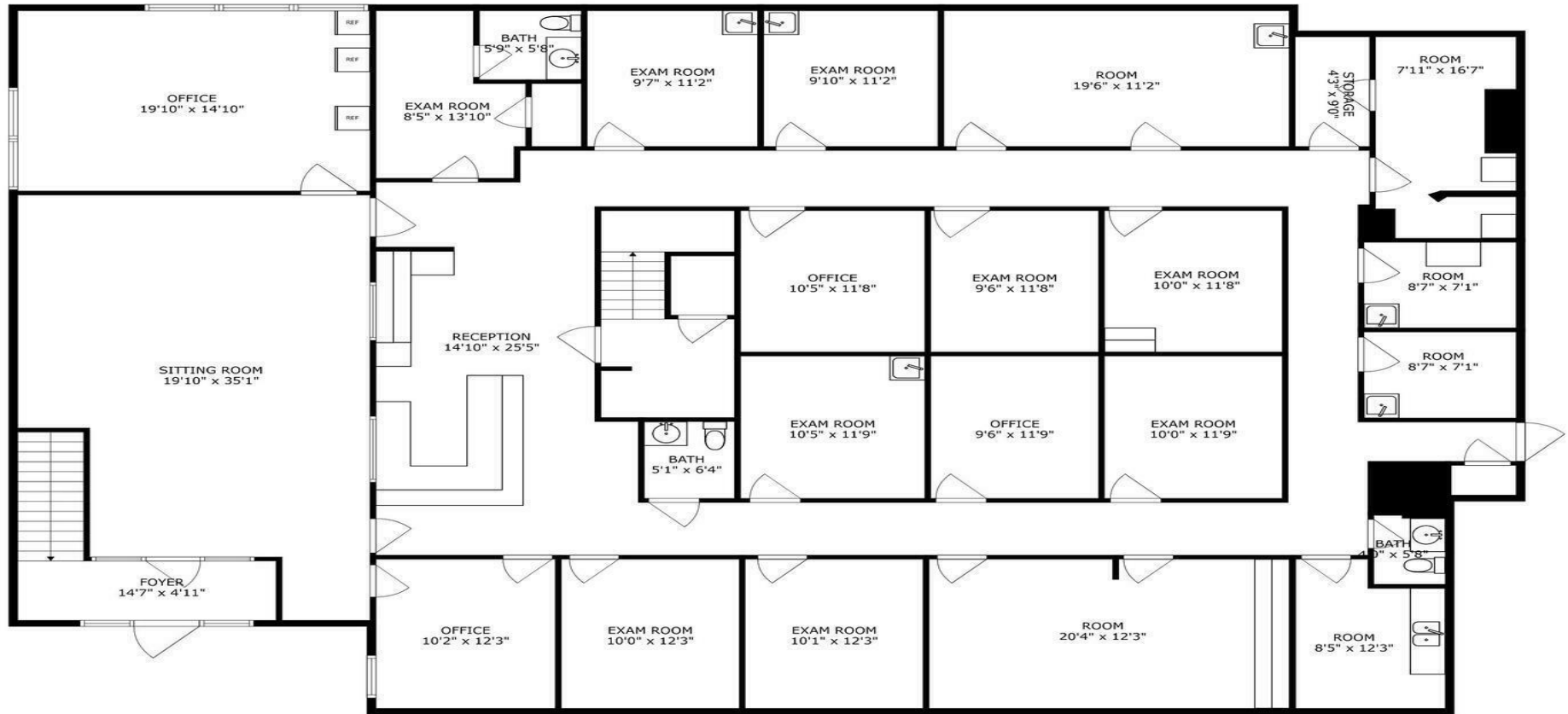
Sheryl Fisher
Commercial Broker
312 988 9070
sherylfisher@cbcnrt.com



SALE

11316 WEST WADSWORTH ROAD

FLOORPLAN / MAIN FLOOR



SIZES AND DIMENSIONS ARE APPROXIMATE, ACTUAL MAY VARY.

Sheryl Fisher
Commercial Broker
312 988 9070
sherylfisher@cbcncr.com



COLDWELL BANKER
COMMERCIAL
REALTY