



NEIGHBORHOOD

MILWAUKEE JUNCTION

LOCATION

SW CORNER OF E GRAND BLVD
AND MILWAUKEE

SPACE TYPE

OFFICE

Chroma is a visionary new development celebrating creativity, collaboration, and community in historic Milwaukee Junction. With its mix of traditional office, coworking, and event spaces, the nine-story building featuring the “Girl with the D Earring” is making an impact in a neighborhood where scores of new restaurants, businesses, and residential developments are emerging.

ASKING RENT

\$27/SF Modified Gross

NEIGHBORS

Oak & Reel, Freya, Kiesling, Milwaukee Cafe, UnPaint, CityYear, TruFit, Vault of Midnight, I.M. Weiss Gallery, Boro, Someday Gallery, From the Field, Tangent Gallery, The Gathering Coffee Co, Full Lotus Yoga, Lake Trust Credit, Tech Town, Time Will Tell, Baobab Fare, Huntington Bank, The Fisher Building, Wayne State, The Ten, Time Will Tell, Supino’s Pizza, Shinola Headquarters, CCS, Yum Village, Bucharest Grill, Z’s Villa Grill.

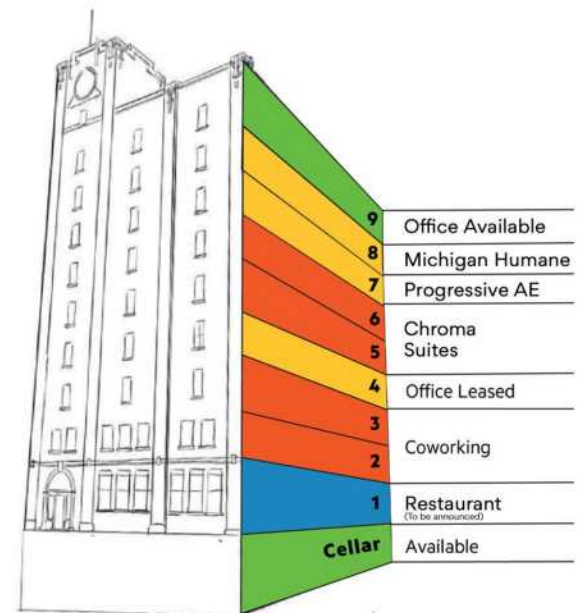
SIZE

6,000 - 8,058 RSF

PARKING

190 Spaces

STACKING PLAN



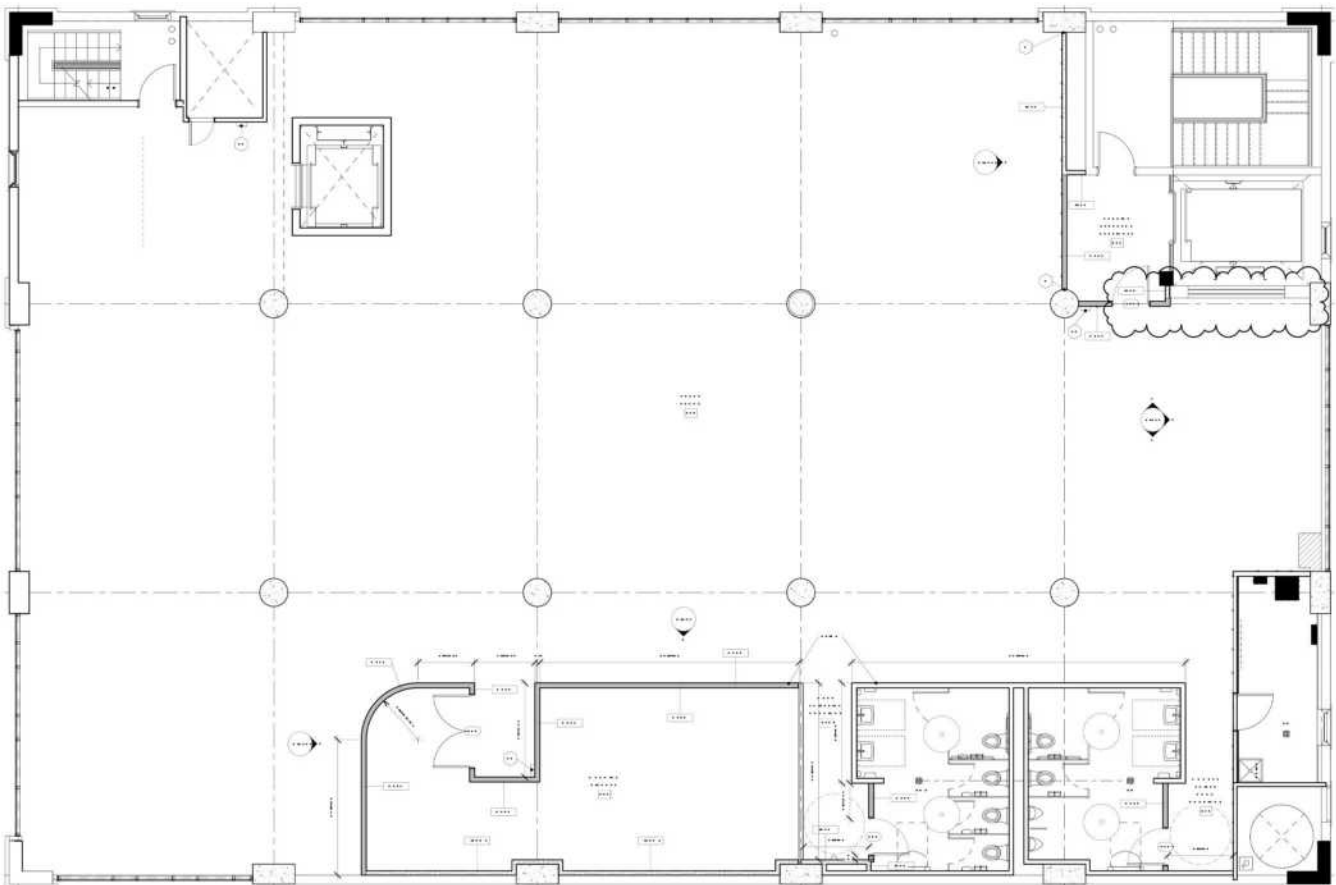
2937

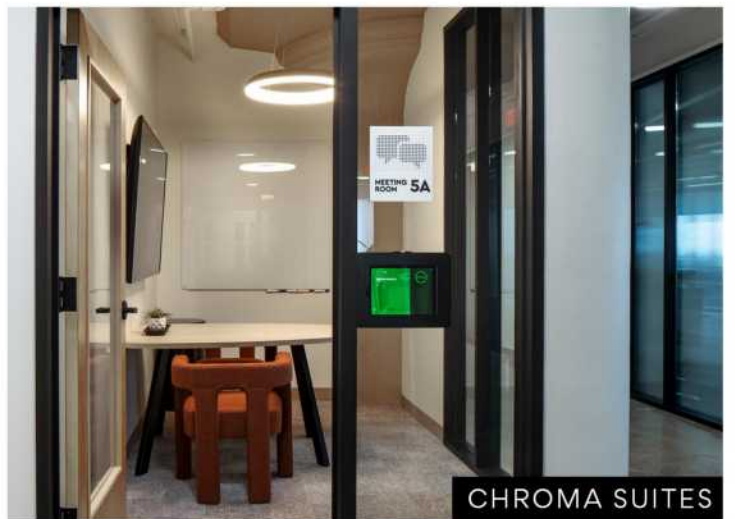
E GRAND BLVD

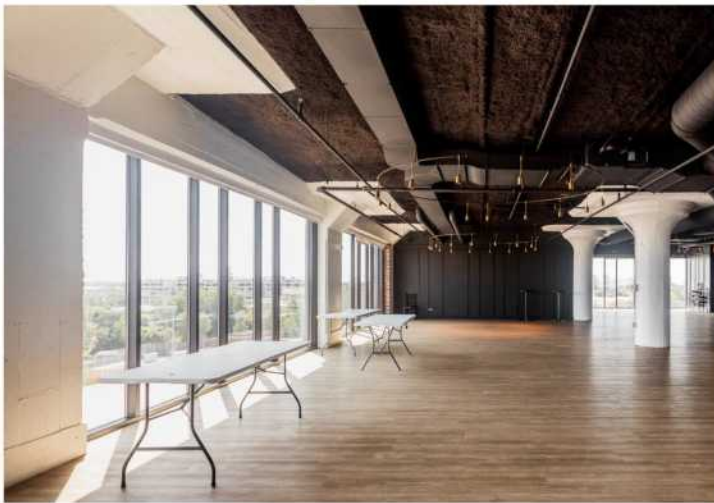
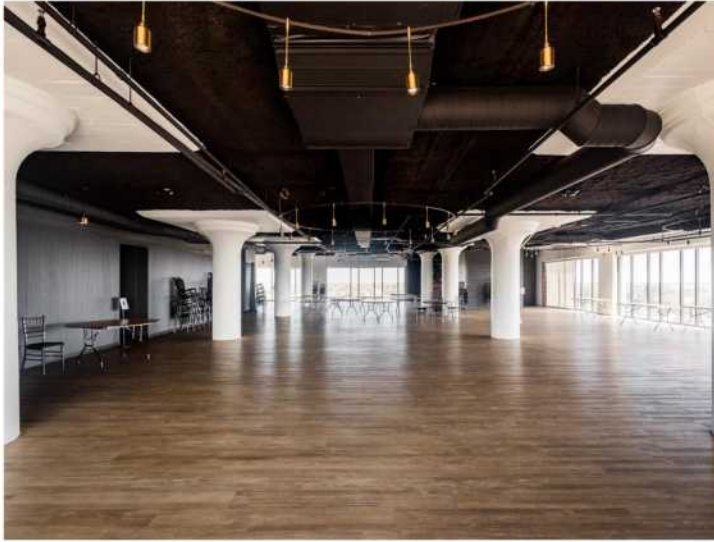
Ninth Floor

FEATURES

- Historic Architectural Details
- Onsite Parking
- Open light-filled floor plates
- Incredible Views
- Finished Restrooms
- 12' Ceilings









Fisher Building →

← Tech Town

Shinola HQ, CCS →

Time Will Tell
Huntington Bank →

← Supino Pizza
Baobab Fare,
YumVillage,
Lake Trust
Joe Louis
Southern Kitchen

← Kiesling,
Milwaukee Cafe

← **Chroma**
2937 E Grand
8,058
RSF Available

← Oak & Reel,
Freya

Jam Handy →

← Vault of Midnight,
Boro, Someday
I.M. Weiss Gallery,
From the Field

A TRUSTED AND RESPECTED MEMBER
OF THE COMMUNITY, O'CONNOR REAL
ESTATE BRINGS 20 YEARS OF
EXPERIENCE AND EXPERTISE
TO THE COMMERCIAL OFFICE
AND RETAIL MARKET.

For more information about the office space
available at Chroma,
please contact O'Connor Real Estate

Vincent Mazzola
+ 313 704 2678
vincent@oconnordetroit.com

Myles Hamby
+ 714 697 7642
myles@oconnordetroit.com