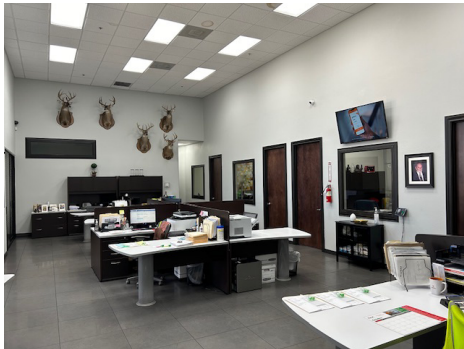


821 Union Pacific Blvd. Laredo TX, 78045



AVAILABLE FOR LEASE

OVERVIEW



ABOUT THE PROPERTY

Prime industrial warehouse with office space built in 2013. Features a separate-entrance conference room, four offices, open workstation area, break room, and restrooms. Warehouse includes a shipping office, sprinkler system, and 20-24 ft. ceiling height. Ideal for diverse business needs.

PROPERTY FEATURES

- Warehouse - 26,400 S.F.
- Office 3,354 S.F.
- Lot 1.84 acres
- 12 Doors
- 1 ramp
- 12-15 trailer spaces
- Sprinkler System
- 10 car parking spaces



Anilu Rocha



anilurocha@yahoo.com



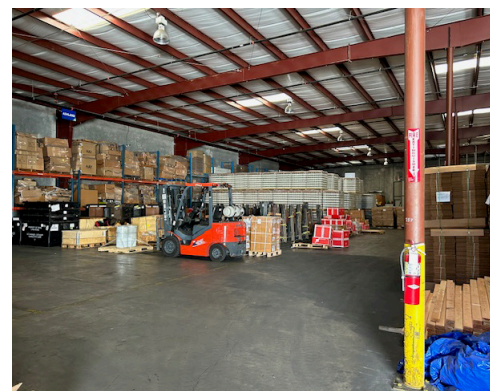
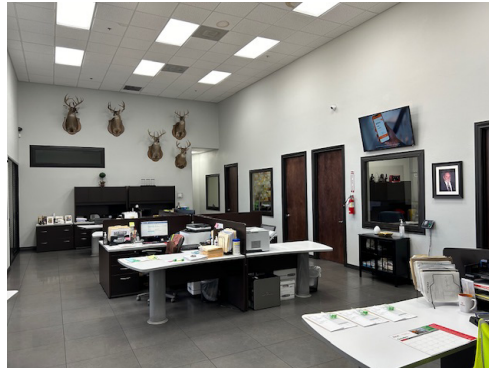
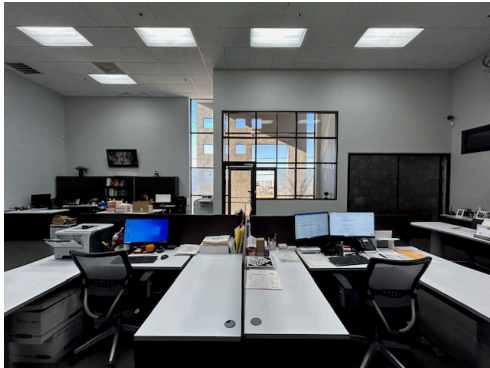
956-.693.0890



5615 San Dario Ave. #101.
Laredo, TX 78041

821 Union Pacific Blvd. Laredo TX, 78045

AVAILABLE FOR LEASE



Anilu Rocha



anilurocha@yahoo.com



956-.693.0890



5615 San Dario
Ave. #101.
Laredo, TX 78041

821 Union Pacific Blvd. Laredo TX, 78045

AVAILABLE FOR LEASE



Anilu Rocha



anilurocha@yahoo.com



956-.693.0890



5615 San Dario
Ave. #101.
Laredo, TX 78041