

*+/- 3,200 SF Medical Office For Lease*



**NAI Piedmont Triad**  
Commercial Real Estate Services, World Wide

**5409 W. FRIENDLY AVE**  
GREENSBORO, NC



# PROPERTY *overview*

## PROPERTY SUMMARY

Total Building Size	+/- 3,200 SF
Year Built	1985
Parking	16 Parking Spaces with room for expansion
Space	6 Exam Rooms Waiting Room and Reception Lab Room Imaging Room Breakrooms 4 Offices Nurses Station 3 Bathrooms



## LOCATION & ADVANTAGES

Prime Positioning: Located along Friendly Avenue near Guilford College in Greensboro

Property Condition: Very well-maintained

The building has additional land that is included.

## ASKING PRICE

\$22/SF NNN



# PROPERTY *photos*

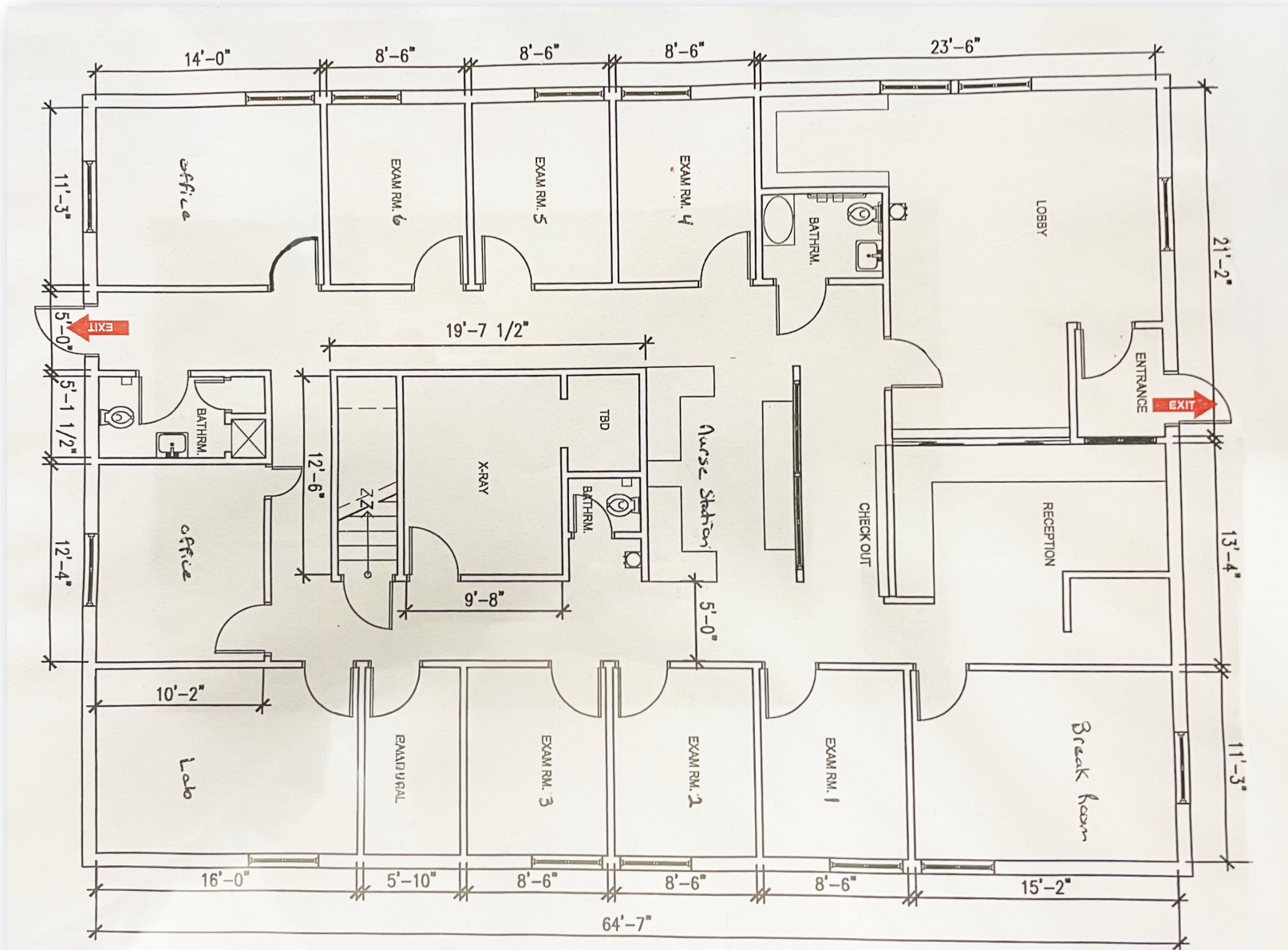
**NAI** Piedmont Triad  
Commercial Real Estate Services, World Wide





# FLOOR plan

**NAI** Piedmont Triad  
Commercial Real Estate Services, World Wide





# REGIONAL map

**NAI** Piedmont Triad  
Commercial Real Estate Services, World Wide





# BROKERAGE DEVELOPMENT INVESTMENTS

FOR MORE INFORMATION, CONTACT:

**JOHN PURDIE  
BROKER**

(O) 336.358.3226

(C) 336.207.2175

JPURDIE@NAIPT.COM

348 N. Elm Street • Greensboro, NC 27401 • [naipt.com](http://naipt.com)

The information contained herein is deemed reliable but is not guaranteed. NAI Piedmont Triad makes no warranties or representations regarding the accuracy, completeness, or reliability of the information. All parties are encouraged to independently verify all details, including but not limited to property condition, terms, and financial projections. Prices, terms, and availability are subject to change without notice.

