

# 1999 W. 75th Street - Unit 203

Woodridge, IL 60517



# 1999 W. 75th Street - Unit 203 | Woodridge, IL 60517

john greene Commercial | 1311 S Route 59, Naperville, IL 60564 | 630.229.2290

OFFICE/MEDICAL SUITE FOR LEASE



## OFFERING SUMMARY

Lease Rate:	\$13.30 psf NNN
CAM:	\$3.10 psf
Taxes:	\$3.25 psf
Lot Size:	2.58± Acres
Year Built:	1987
Building Size:	12,000± SF
Zoning:	B-1S
Traffic Count:	32,300VPD (2016)

## PROPERTY HIGHLIGHTS

- Prominent location near IL-355 and 75th Street
- Rent includes: heat, A/C, water, sewer and scavenger service
- Professionally managed
- Elevator
- Ample Parking

Jon Waldron

jonwaldron@johngreenecommercial.com

815.693.0544

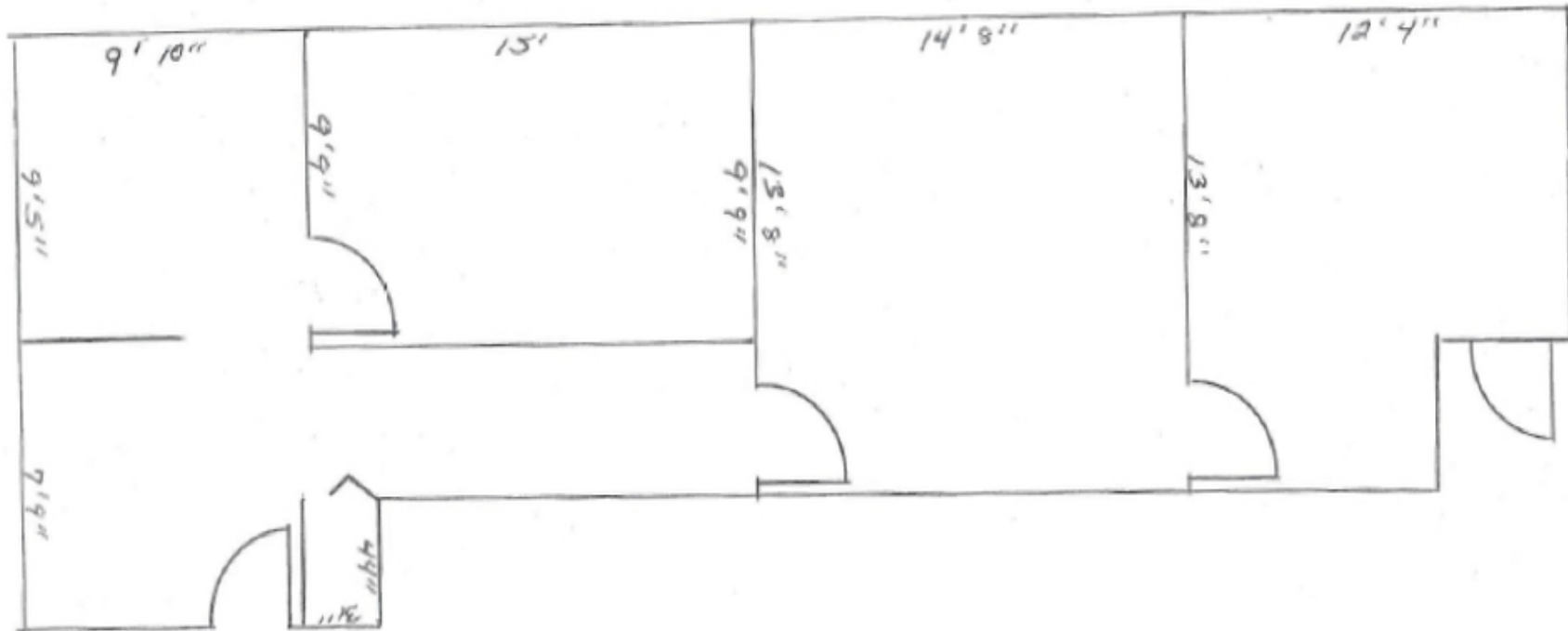
The information contained herein is from sources john greene Real Estate deems reliable, but is not guaranteed. This offer may be withdrawn from the market or be subject to a change in price or terms without advance notice. Seller reserves the right to reject any and all offers. Duplication is expressly prohibited. 2019

john  
greene  
COMMERCIAL

# 1999 W. 75th Street - Unit 203 | Woodridge, IL 60517

john greene Commercial | 1311 S Route 59, Naperville, IL 60564 | 630.229.2290

OFFICE/MEDICAL SUITE FOR LEASE



Unit 203 Floor Plan

**Jon Waldron**

jonwaldron@johngreenecommercial.com

815.693.0544

The information contained herein is from sources john greene Real Estate deems reliable, but is not guaranteed. This offer may be withdrawn from the market or be subject to a change in price or terms without advance notice. Seller reserves the right to reject any and all offers. Duplication is expressly prohibited. 2019

john  
greene  
COMMERCIAL



# 1999 W. 75th Street - Unit 203 | Woodridge, IL 60517

john greene Commercial | 1311 S Route 59, Naperville, IL 60564 | 630.229.2290

OFFICE BUILDING FOR LEASE



**Jon Waldron**

jonwaldron@johngreenecommercial.com

815.693.0544

The information contained herein is from sources john greene Real Estate deems reliable, but is not guaranteed. This offer may be withdrawn from the market or be subject to a change in price or terms without advance notice. Seller reserves the right to reject any and all offers. Duplication is expressly prohibited. 2019

john  
greene  
COMMERCIAL



# 1999 W. 75th Street - Unit 203 | Woodridge, IL 60517

john greene Commercial | 1311 S Route 59, Naperville, IL 60564 | 630.229.2290

OFFICE/MEDICAL SUITE FOR LEASE



Jon Waldron

jonwaldron@johngreenecommercial.com

815.693.0544

The information contained herein is from sources john greene Real Estate deems reliable, but is not guaranteed. This offer may be withdrawn from the market or be subject to a change in price or terms without advance notice. Seller reserves the right to reject any and all offers. Duplication is expressly prohibited. 2019

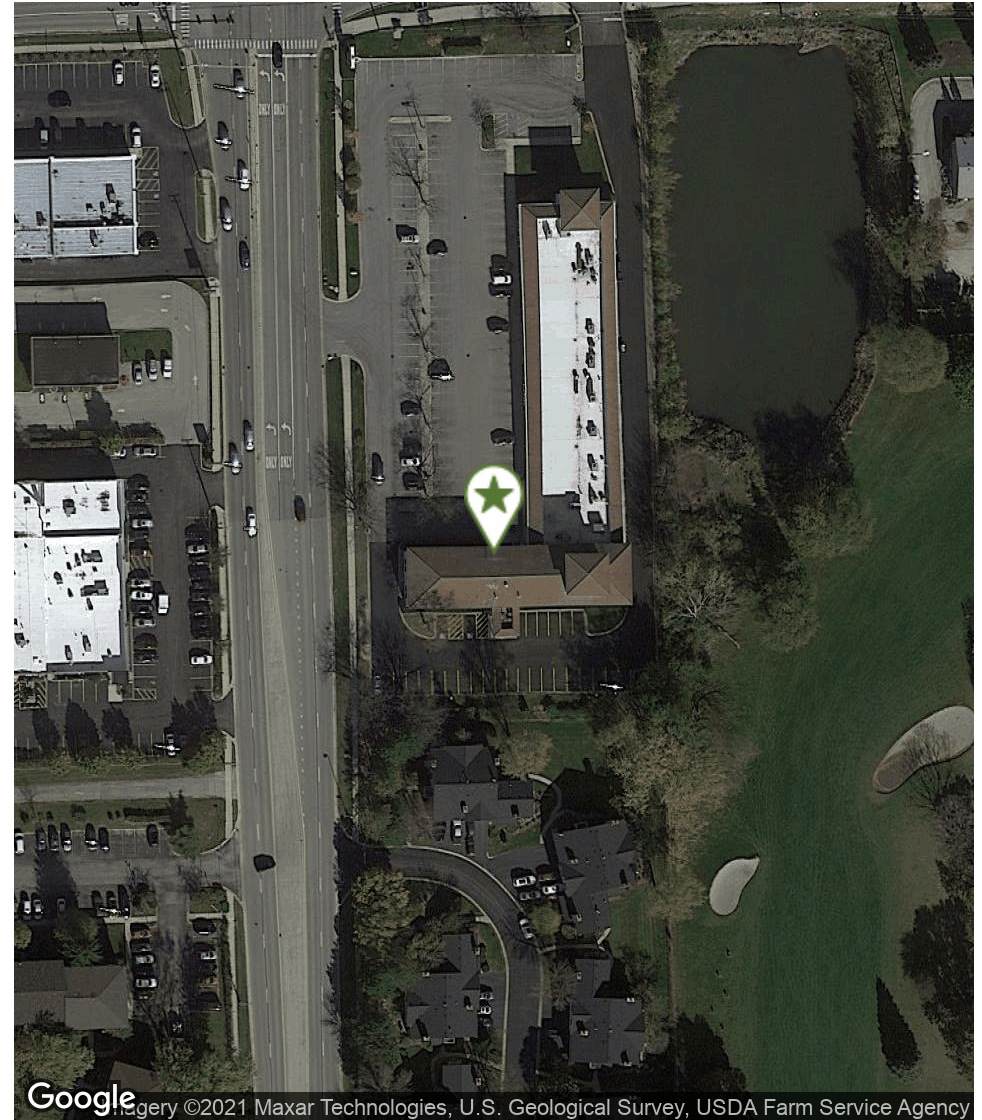
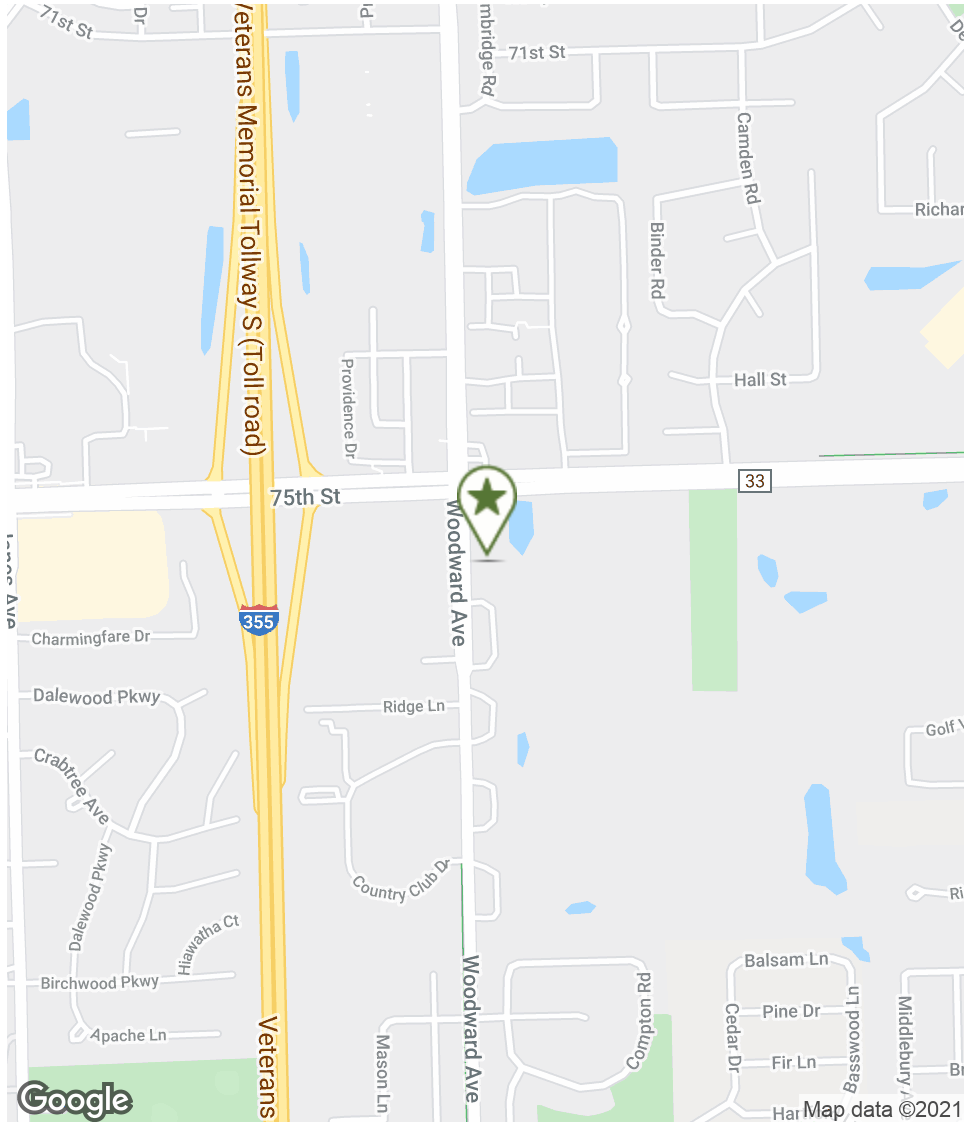
john  
greene  
COMMERCIAL



# 1999 W. 75th Street - Unit 203 | Woodridge, IL 60517

john greene Commercial | 1311 S Route 59, Naperville, IL 60564 | 630.229.2290

OFFICE/MEDICAL SUITE FOR LEASE



**Jon Waldron**

jonwaldron@johngreenecommercial.com

815.693.0544

The information contained herein is from sources john greene Real Estate deems reliable, but is not guaranteed. This offer may be withdrawn from the market or be subject to a change in price or terms without advance notice. Seller reserves the right to reject any and all offers. Duplication is expressly prohibited. 2019

**john  
greene**  
COMMERCIAL