



FOR LEASE

# 5040 SADLER PLACE GLEN ALLEN VA

LISTED BY:

PATRICK SANDERSON  
REAL ESTATE BROKER/ATTORNEY  
(804) 651 6825



**PATRICK SANDERSON**  
BROKER/ATTORNEY  
(804) 651 6825

**5040 SADLER PL | RICHMOND VA**



## PROPERTY FEATURES

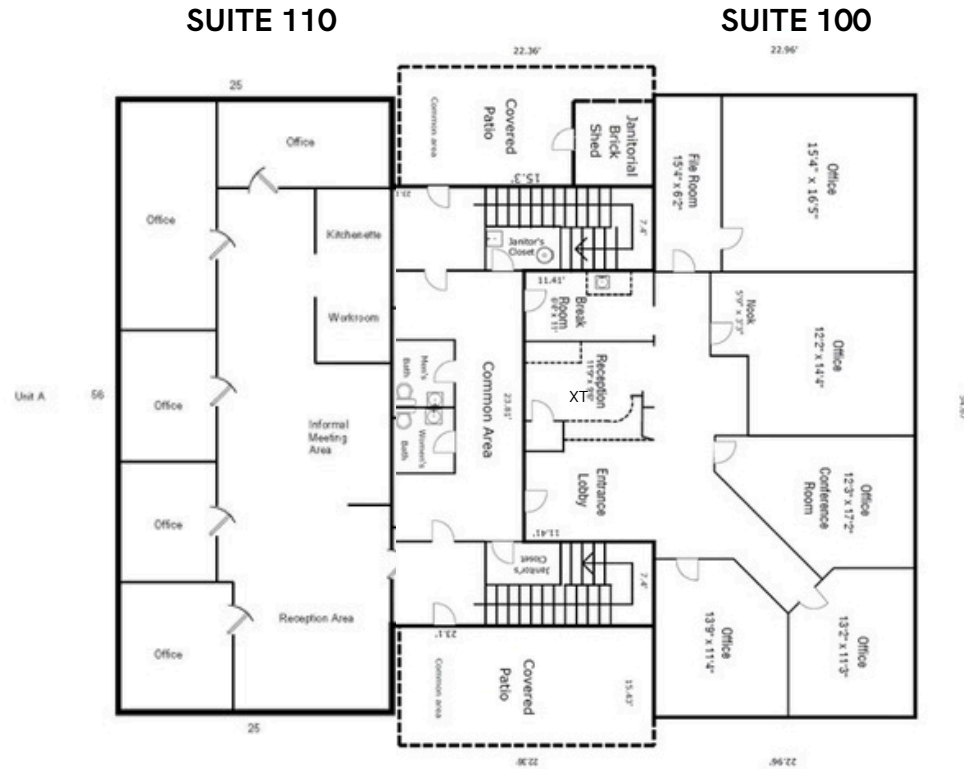
- 2 STORY, BRICK OFFICE BUILDING
- AMPLE PARKING; 24 HOUR ACCESS
- CLOSE ACCESS TO 64, 295 & BROAD
- ENTIRE 7,593 SQ FT AVAILABLE  
( SMALLER SUITES FROM 1,400- 3,662 SF)
- MONUMENT SIGNAGE AVAILABLE
- \$22 PSF, FULL SERVICE
- GREAT VISIBILITY & PRIME LOCATION
- NEAR INNSBROK SHOPS & RESTAURANTS



**PATRICK SANDERSON**  
BROKER/ATTORNEY  
(804) 651 6825

**5040 SADLER PL | RICHMOND VA**

# 1ST FLOOR LAYOUT



**PATRICK SANDERSON**  
BROKER/ATTORNEY  
(804) 651 6825

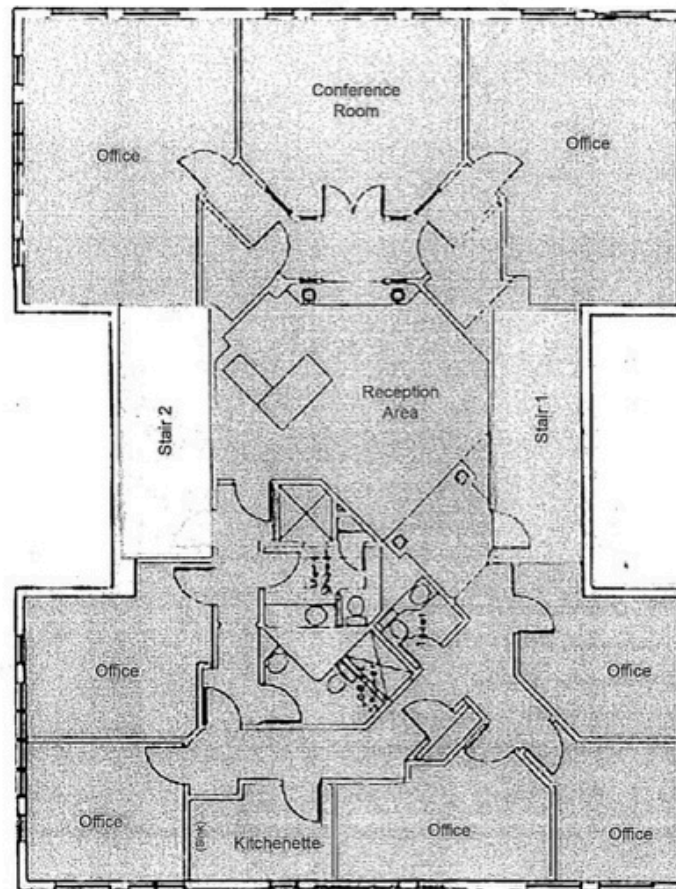
5040 SADLER PL | RICHMOND VA

# 2ND FLOOR LAYOUT

Glen Allen, Virginia 23060

Suite 200 - Can be divided!

North Court 1



Harrison & Bates Incorporated 6606 West Broad St., Suite 400, Richmond, VA 23230-1027 804.788.1000 804.782.1145 fax www.harrison-bates.com  
Independently Owned and Operated File Name: SudleyPlace\_5040-lease-Sale.rvt All Listings are found on our website through Loopnet®  
The information contained herein was obtained from sources believed reliable, however, Grubb & Ellis/Harrison & Bates makes no guarantees, warranties or representations as to the completeness or accuracy thereof. The presentation of this property is submitted subject to errors, omissions, change of price or conditions prior to sale or lease, or withdrawal without notice.