



Old Town Square For Lease

1 Chisholm Trail, Round Rock, TX 78681

**DON
QUICK**
& Associates, Inc.

Caitlin Morales
(512) 814-1813
caitlin@donquick.com



Features and Amenities



+/- 107,469 RSF across 5 buildings,
campus-style environment



Quick access to major
thoroughfares



Access card security system



Hike and bike trails



Parking: 4.1 : 1,000



Pylon signage



Shaded courtyard and picnic area



Several daycare and preschool
options within minutes of property



Ample retail, shopping, and hotel
options within minutes of property

LEASE RATE

\$19.00 - \$21.50 PSF + NNN

***SCROLL TO FLOORPLANS FOR AVAILABILITY**

Building 4:

- Suite 4200/4250 - 3,233 SF

Building 5:

- Suite 5100/5150* - 5,500 SF

Building 1:

- Suite 205 - 1,317 SF
- Suite 210* - 3,349 SF
- Suite 250 - 2,636 SF
- Suite G-100 - 3,477 SF

Building 2:

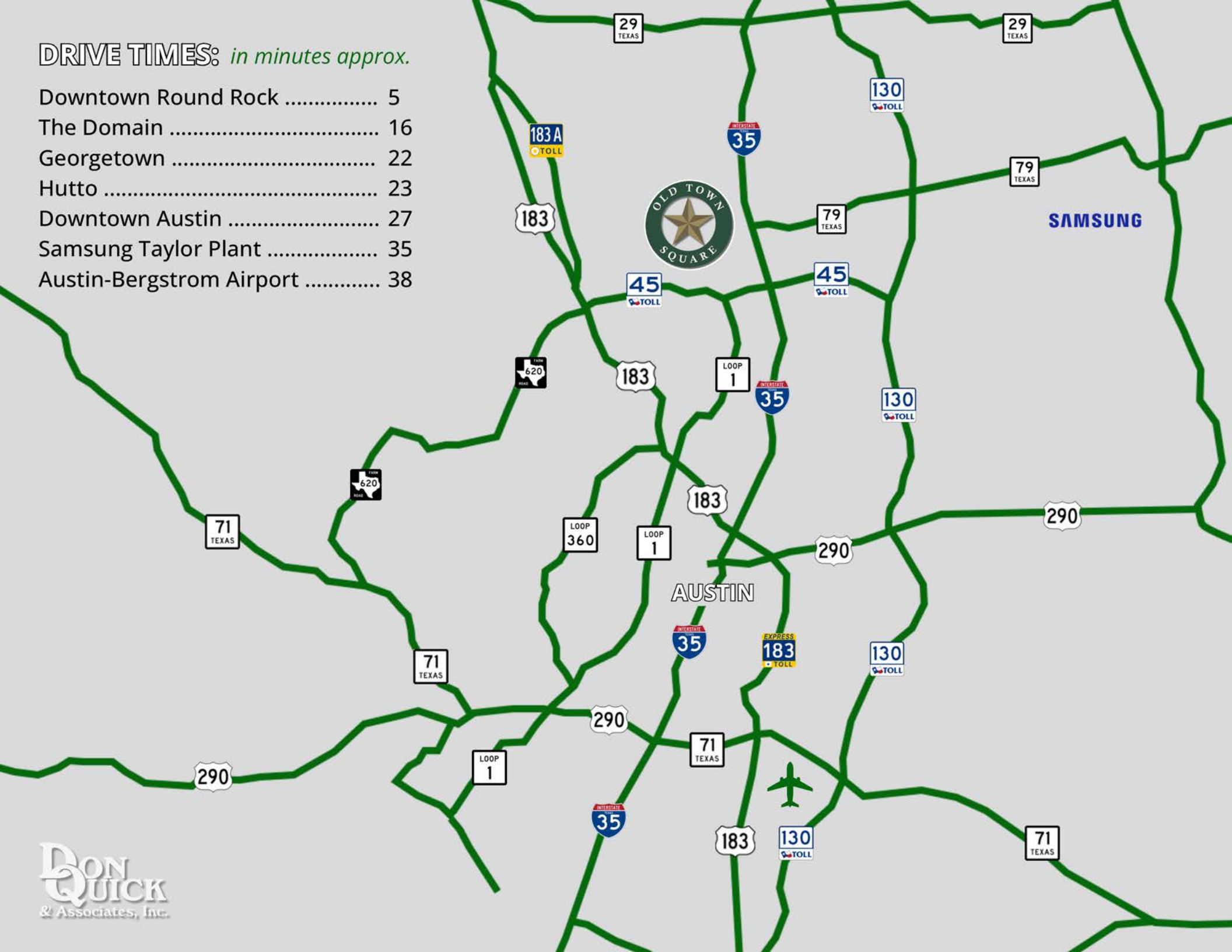
- Suite 2100* - 1,697 SF
- Suite 2200 - 1,390 SF

Building 3:

- Suite 3100 - 2,281 SF
- Suite 3200 - 2,936 SF

DRIVE TIMES: *in minutes approx.*

Downtown Round Rock	5
The Domain	16
Georgetown	22
Hutto	23
Downtown Austin	27
Samsung Taylor Plant	35
Austin-Bergstrom Airport	38



Downtown
Round Rock



The
Round Rock

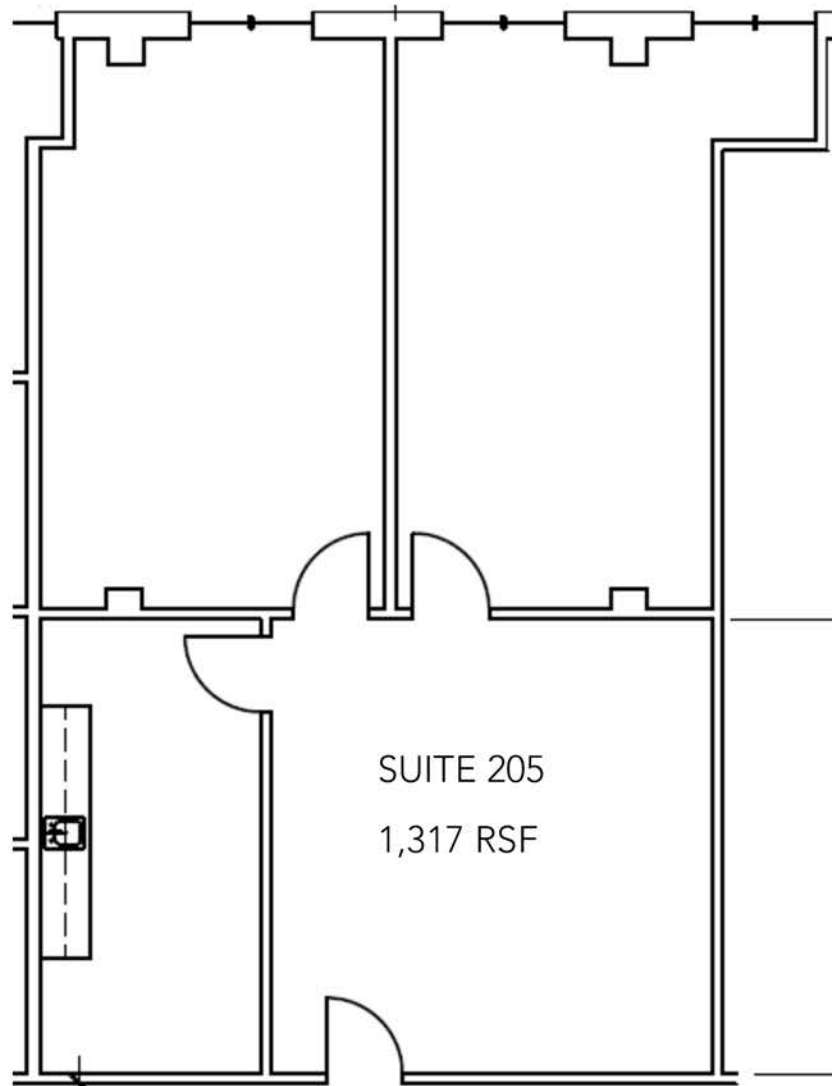


Heritage Trail

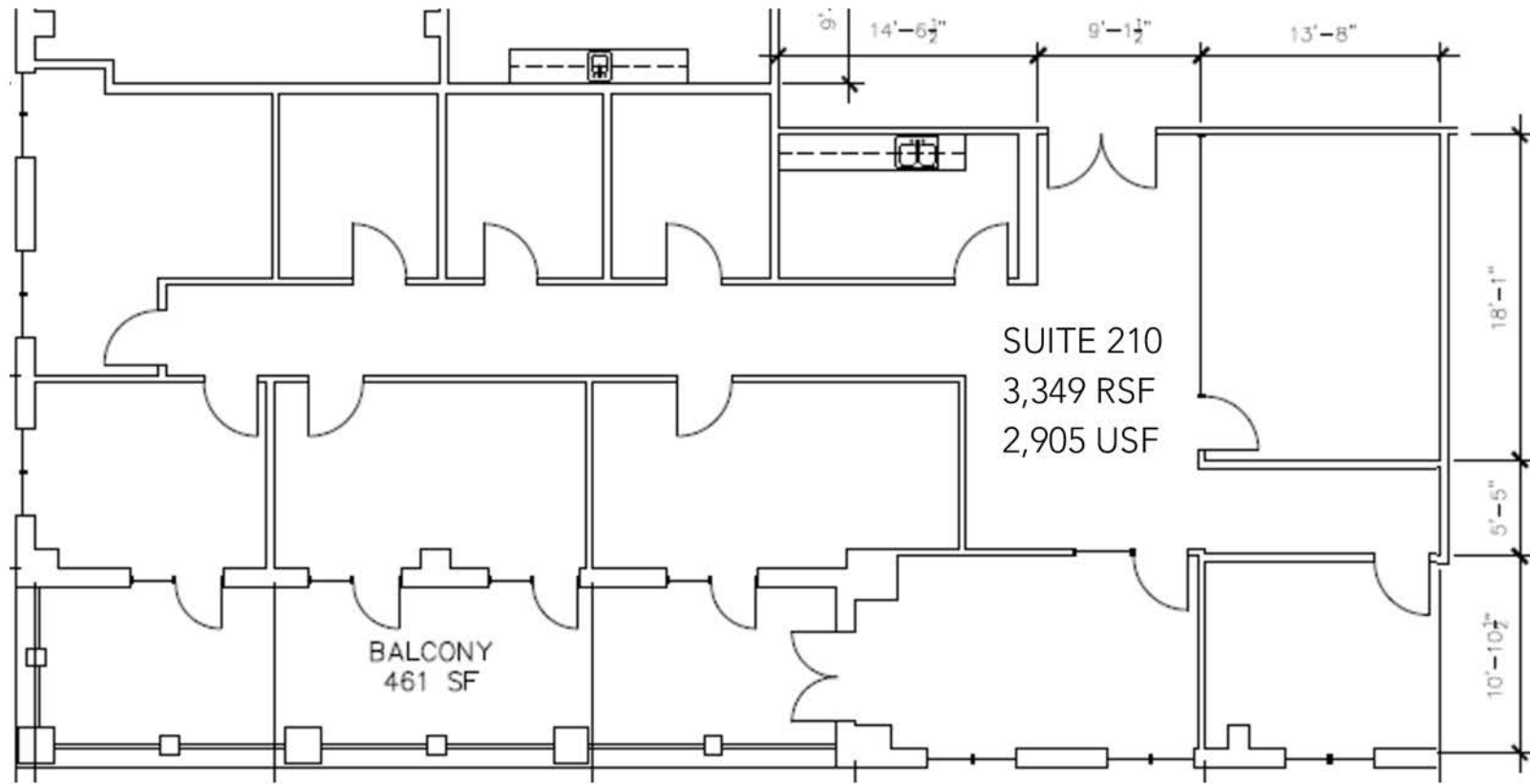
Chisholm Trail Road

DON
QUICK
& Associates, Inc.

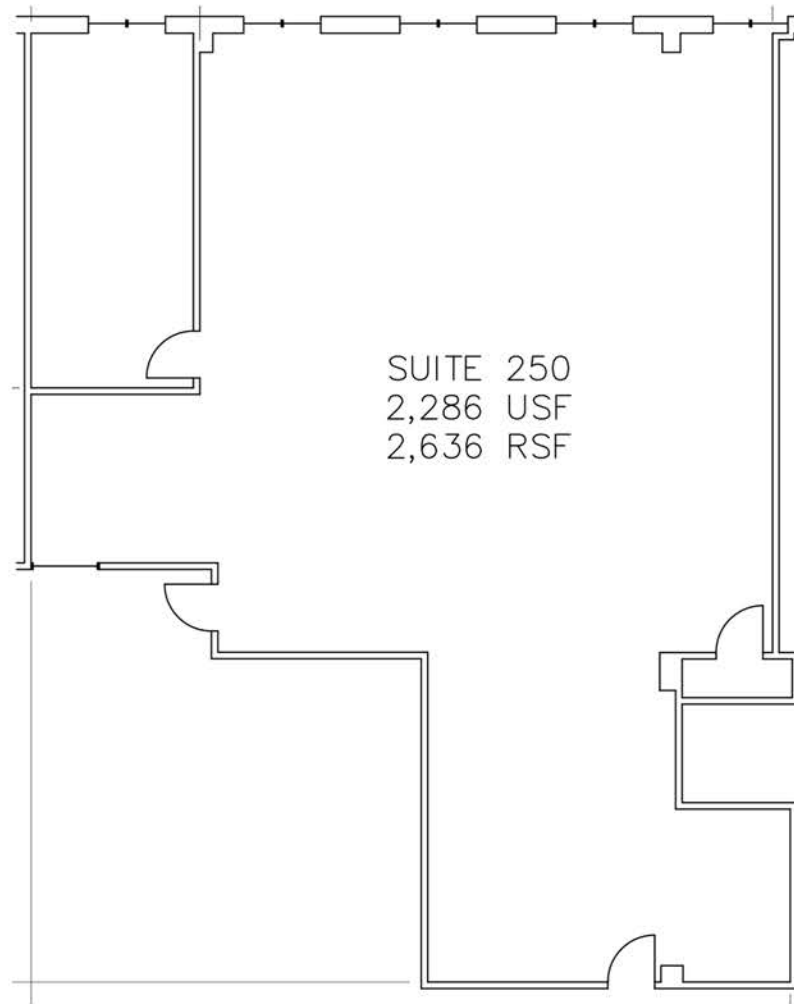




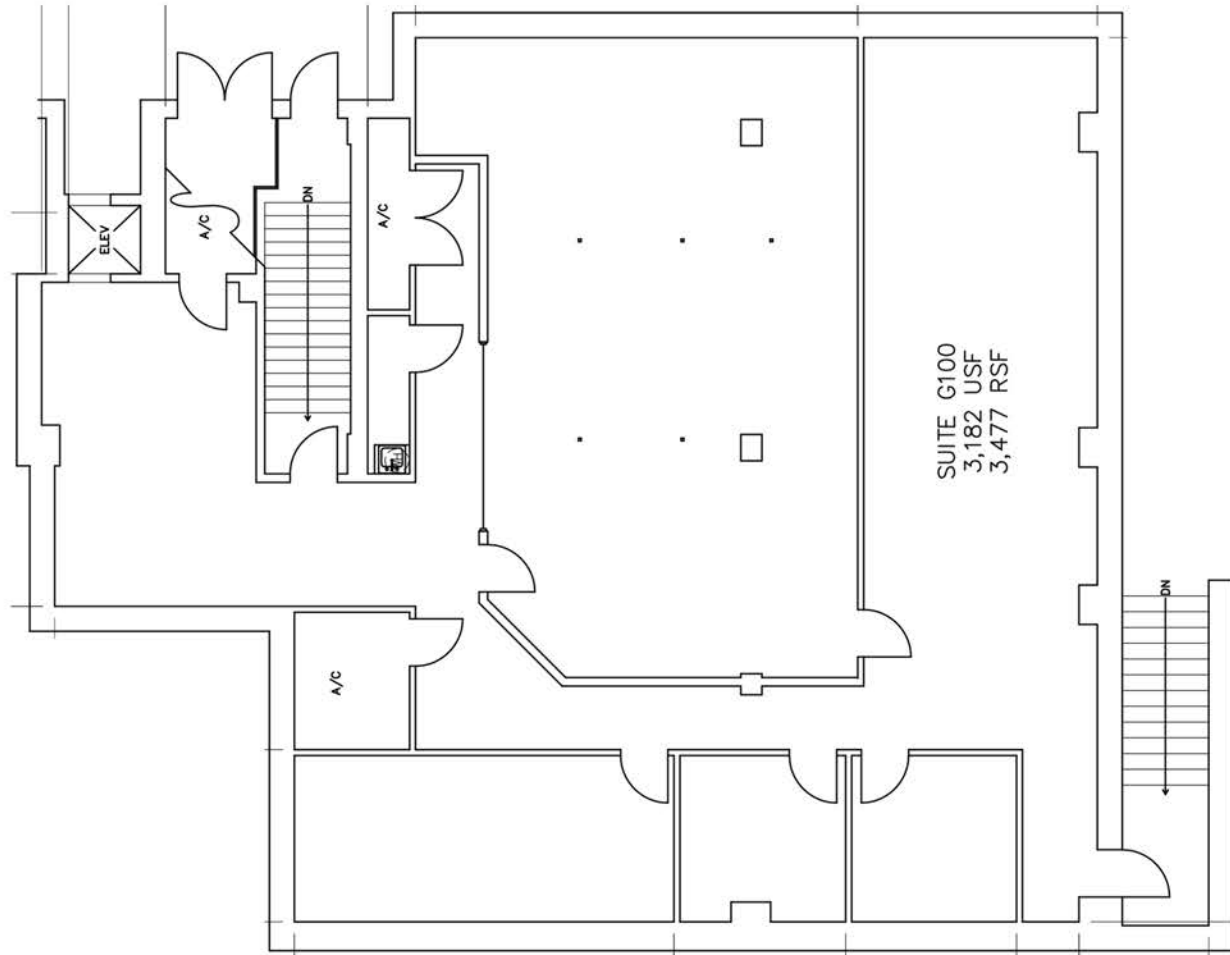
Suite 205 | 1,317 RSF
Available Now



Suite 210 | 3,349 RSF
Available Q4 2025



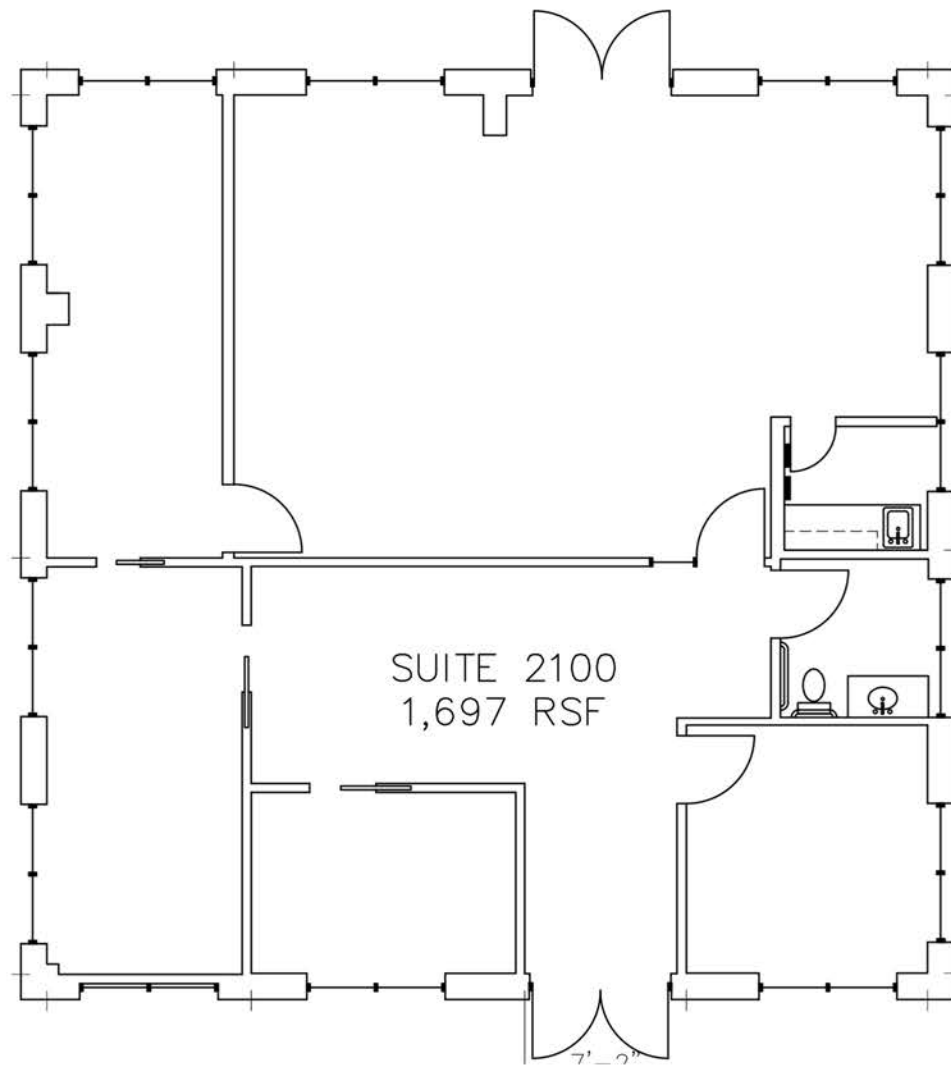
Suite 250 | 2,636 RSF
Available Now



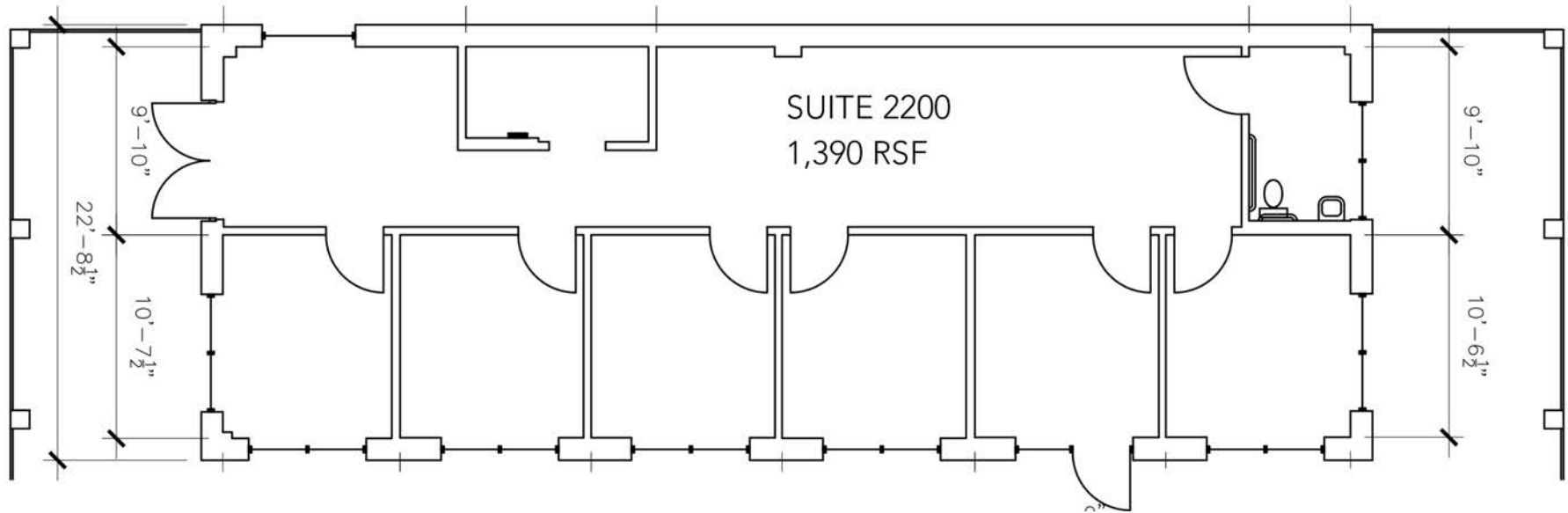
**Special
Pricing!**

Inquire for details

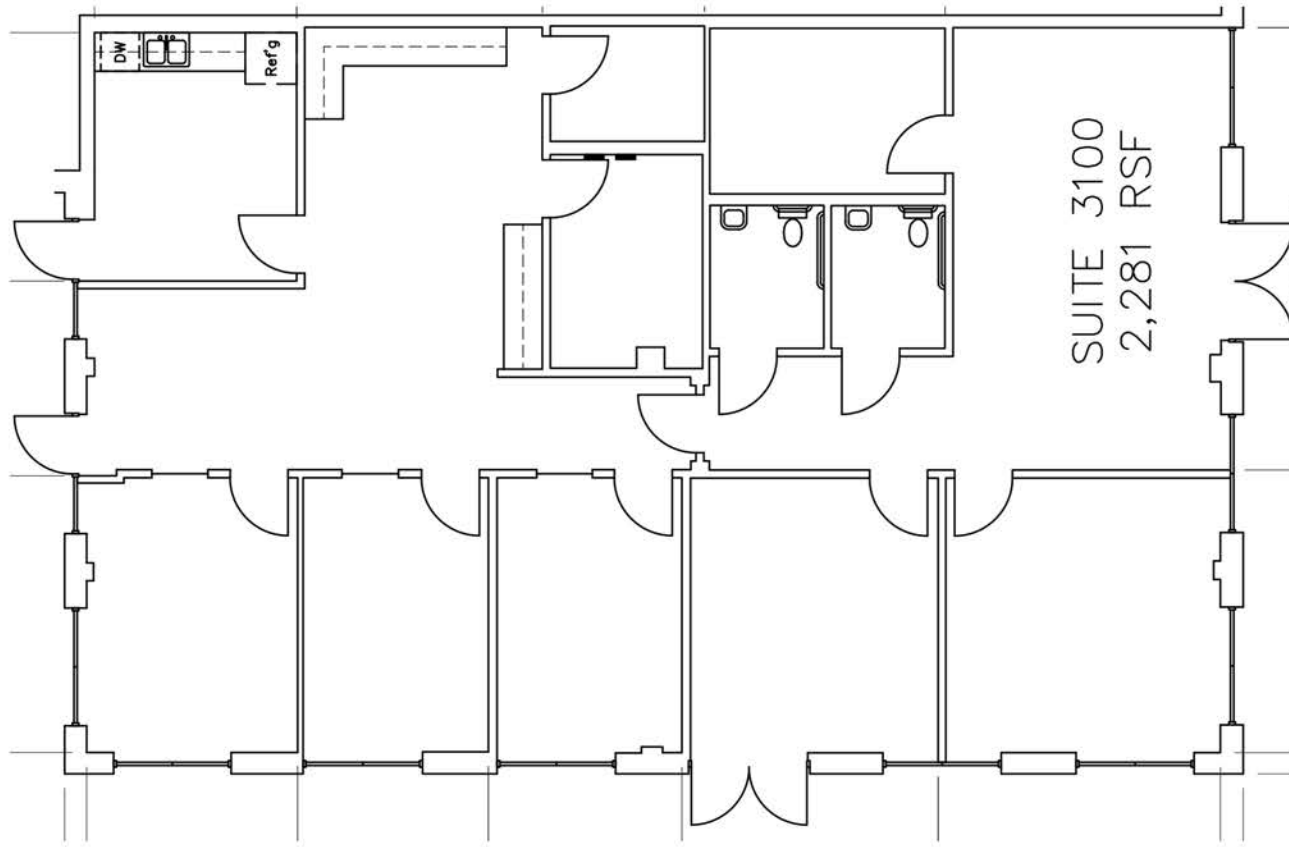
**Suite G-100 | 3,477 RSF
Available Now**



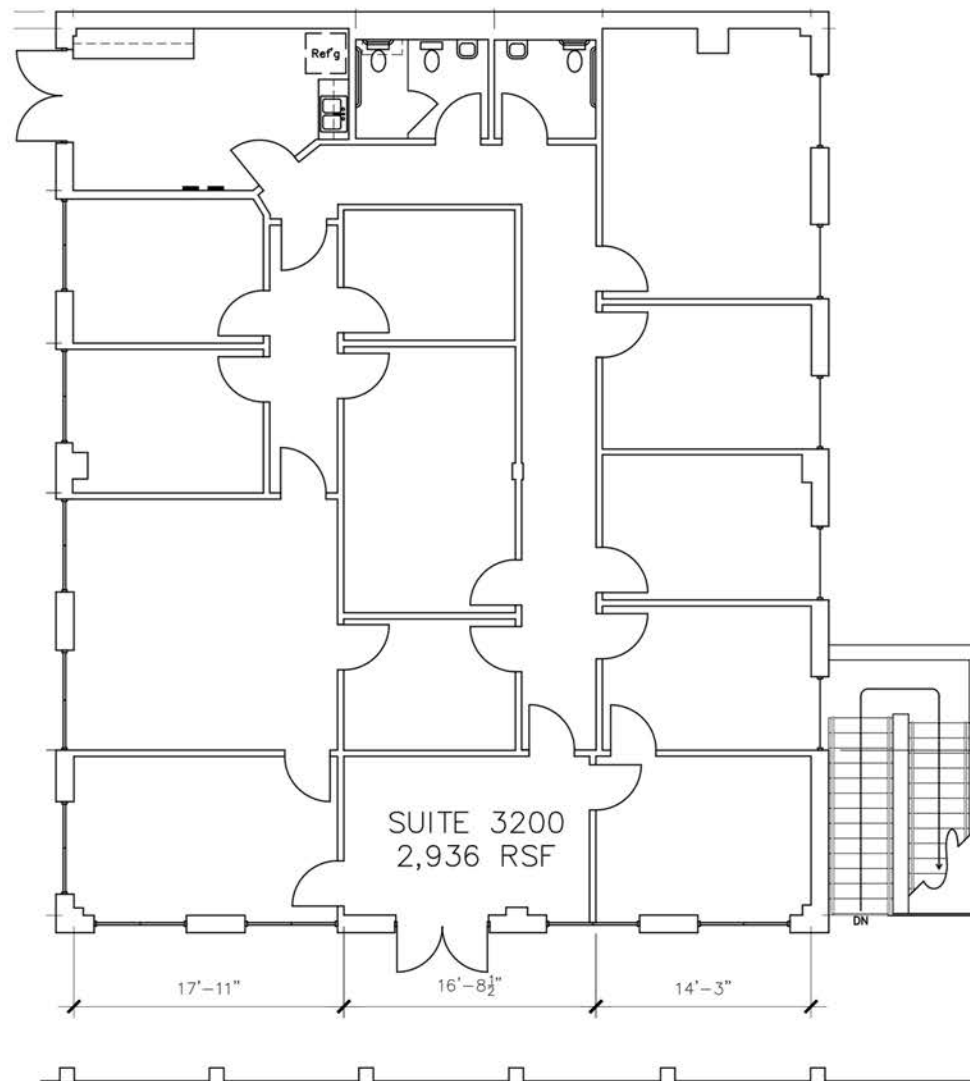
Suite 2100 | 1,697 RSF
Available with 30-60 day notice



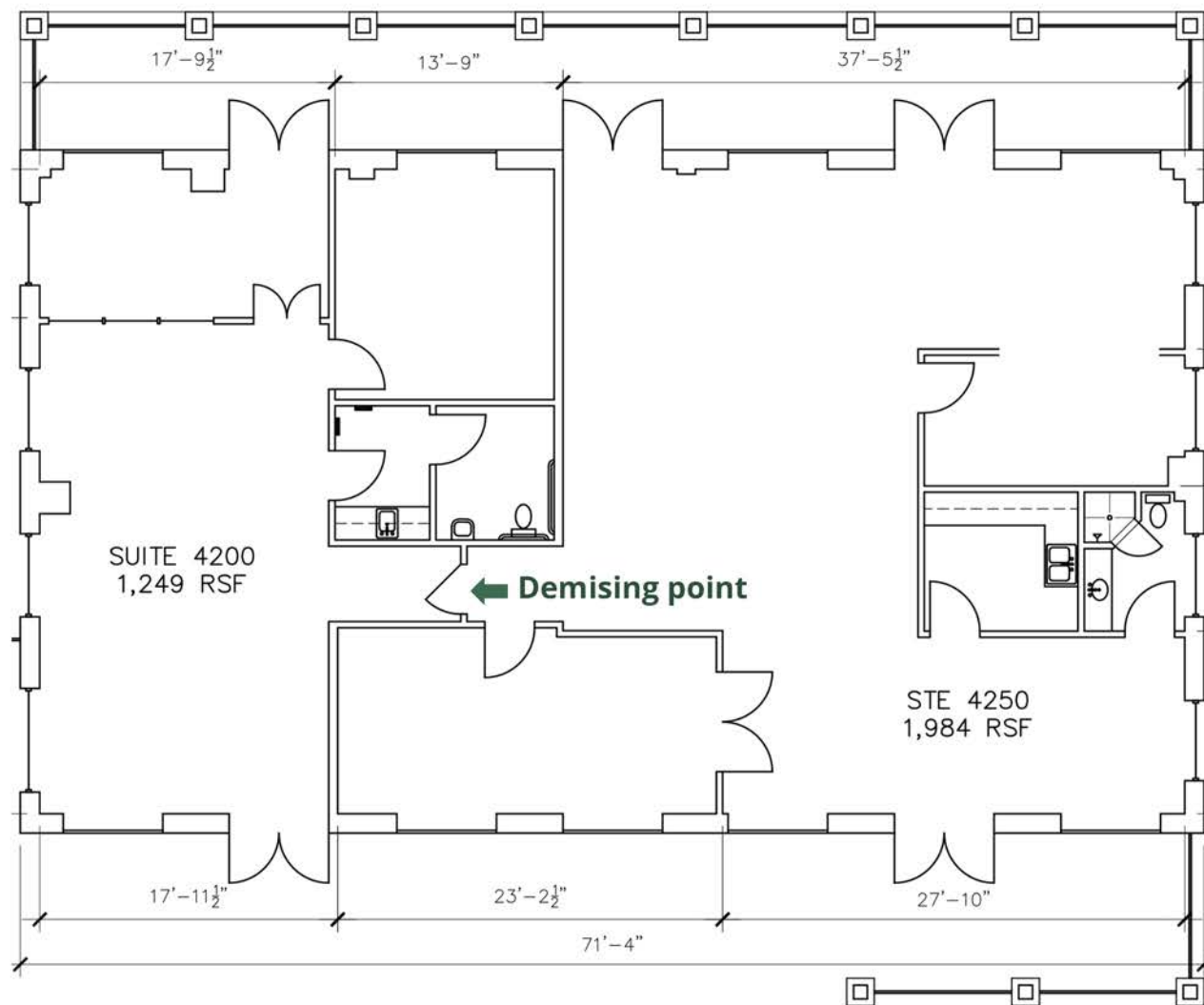
Suite 2200 | 1,390 RSF
Available Now



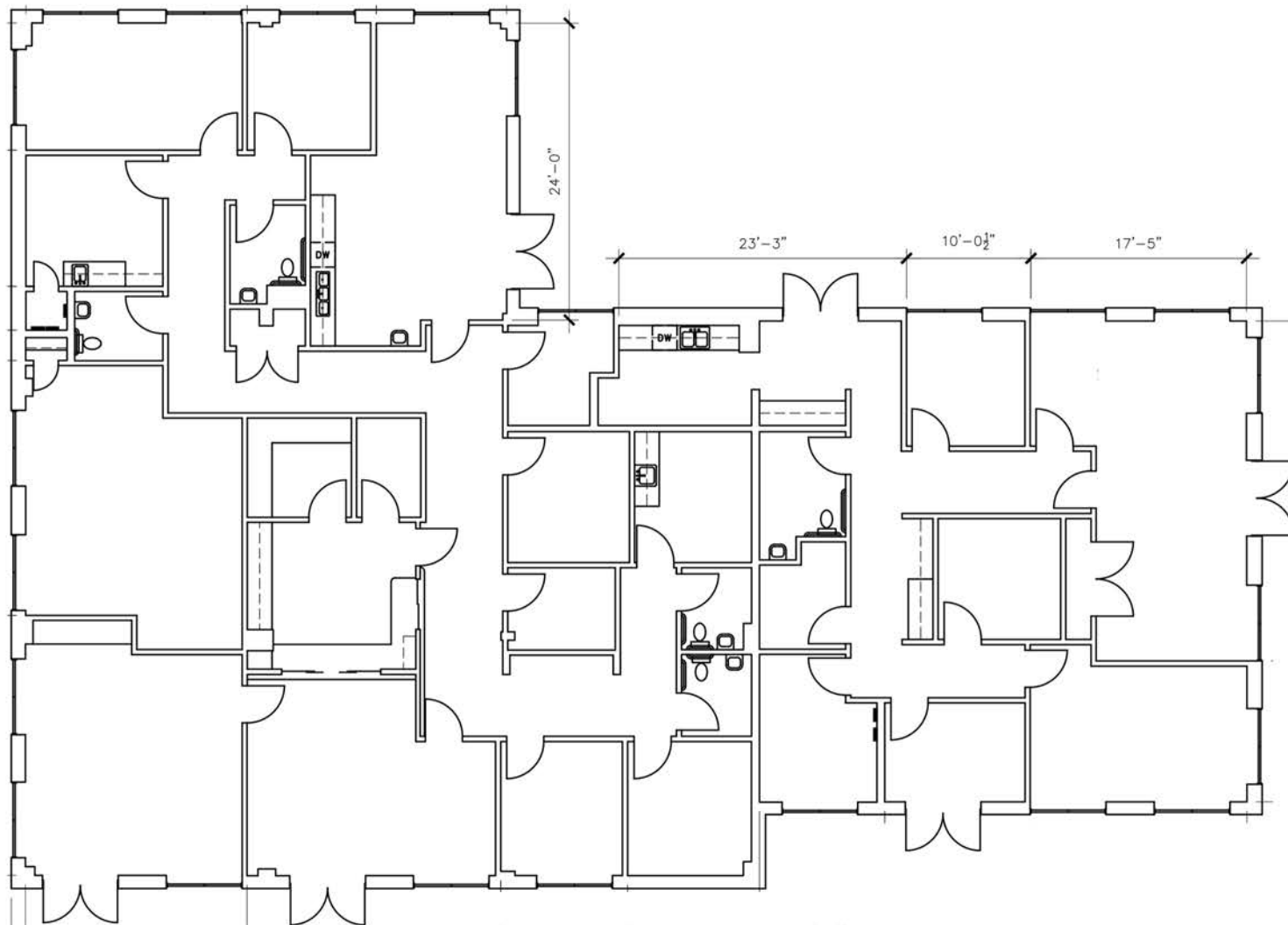
Suite 3100 | 2,281 RSF
Available Now



Suite 3200 | 2,936 RSF
Available Now



Suite 4200/4250 | 3,233 RSF
***Minimum Divisible: 1,249 RSF**
Available Now



Suite 5100/5150 | 5,500 SF

**Space is divisible - inquire for details*
Available with 30-60 day notice







For Leasing Information:



Caitlin Morales
(512) 814-1813
caitlin@donquick.com

1000 N Interstate 35, Round Rock, Texas 78681 | 512.255.3000 | www.donquick.com

The material contained in this memorandum is based in part upon information furnished to Don Quick & Associates, Inc. by sources deemed to be reliable. The information is believed to be accurate in all material respects, but no representation or warranty, expressed or implied, as to list accuracy or completeness is made by any party. Nothing contained herein should be relied upon as a promise or representation as to the future. Recipients should conduct their own investigation and analysis of the information described herein.