

HISTORICAL DOWNTOWN COMMERCIAL /OFFICE BUILDING - FOR SALE

PRIVATE/ON-SITE PARKING

15 & 17 W 8TH STREET | TRACY | CA



LISTING DATA:

BUILDING SIZE: 5,500± SF
LAND SIZE: 0.28± Acres (2 parcels)
APNs: 235-067-040 & 050
ZONING: CBD - Central Business District

COMMENTS:

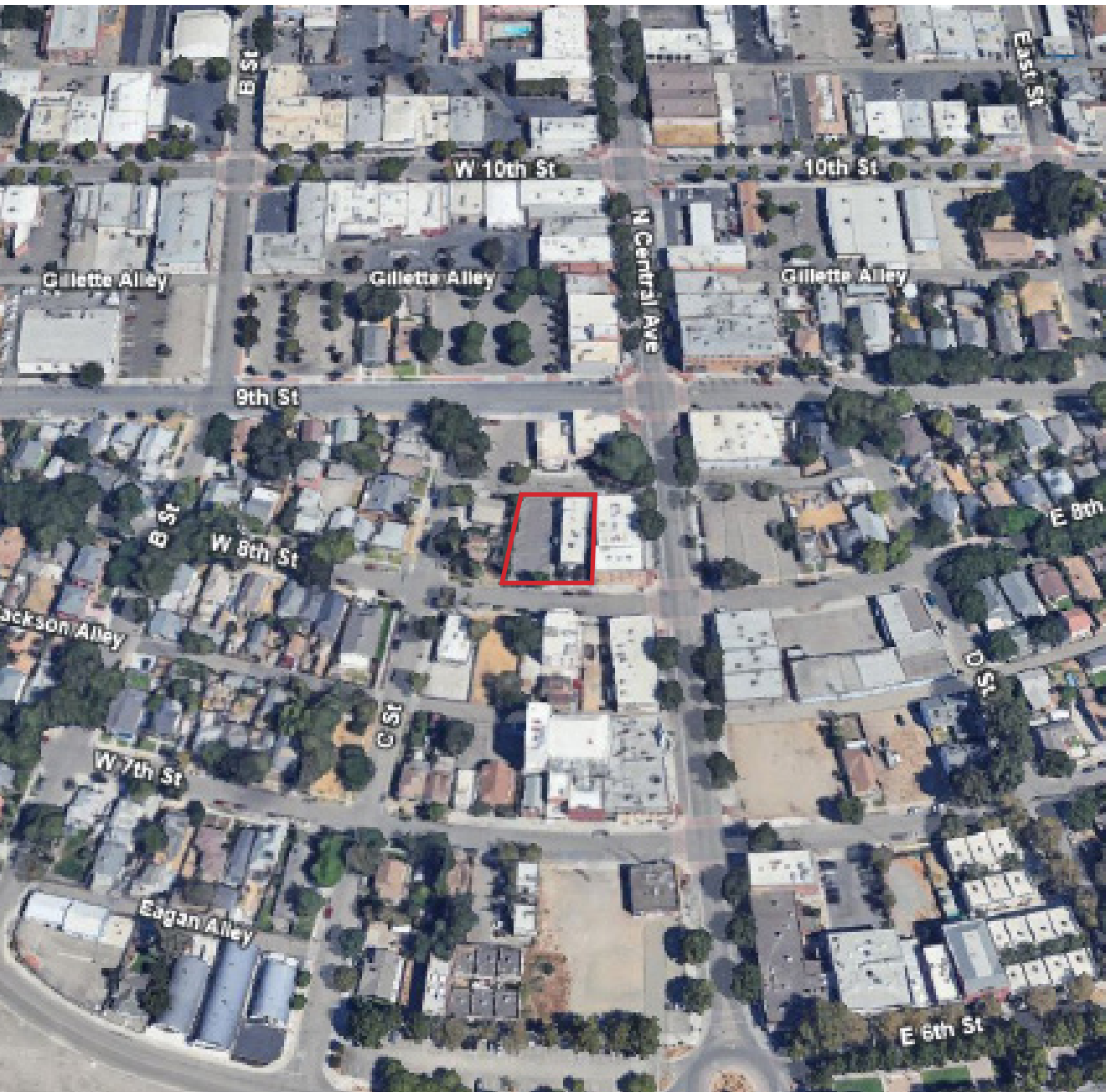
- Located in the heart of Downtown Tracy within walking distance of dining, shopping and banking amenities
- High profile Historical landmark property known as the Tracy Hall of Justice
- Completely remodeled interior and exterior, including roof, heating/air, paint and flooring
- Currently leased month to month to five (5) tenants, generating \$8,400 per month making this both an income or owner/user opportunity
- Private paved/stripped on-site parking (16) stalls
- The City of Tracy is conveniently situated an hour from Sacramento, San Francisco and San Jose and just a few hours from Los Angeles. Tracy is also convenient to the Bay Delta, Yosemite, Tahoe, and the San Francisco Bay

FOR MORE INFORMATION CONTACT:

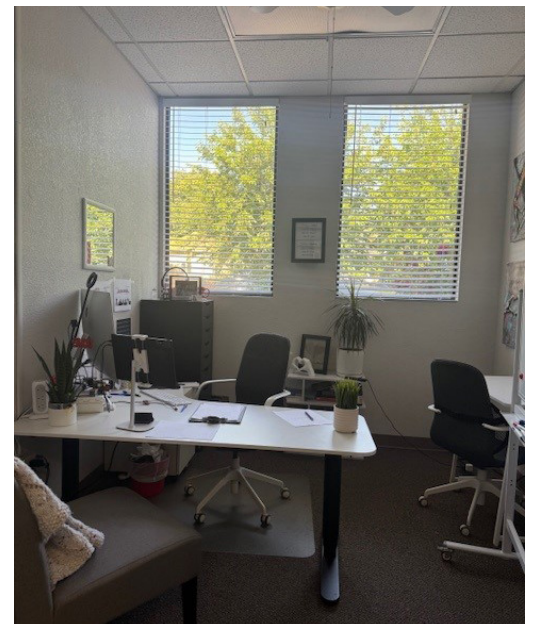
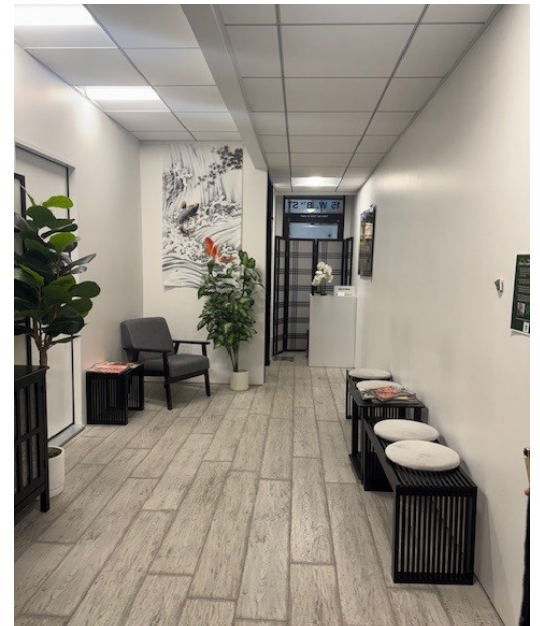
Jim Martin, SIOR
BRE # 01214270
jmartin@lee-associates.com
D 209.983.4088

ECONOMIC DATA:

SALE PRICE: \$1,995,000.00

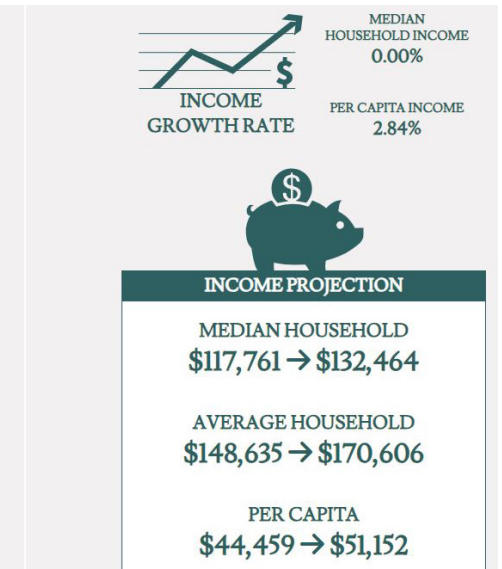
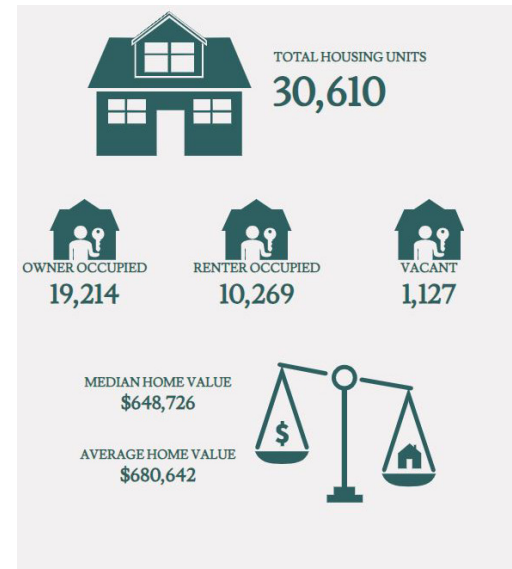
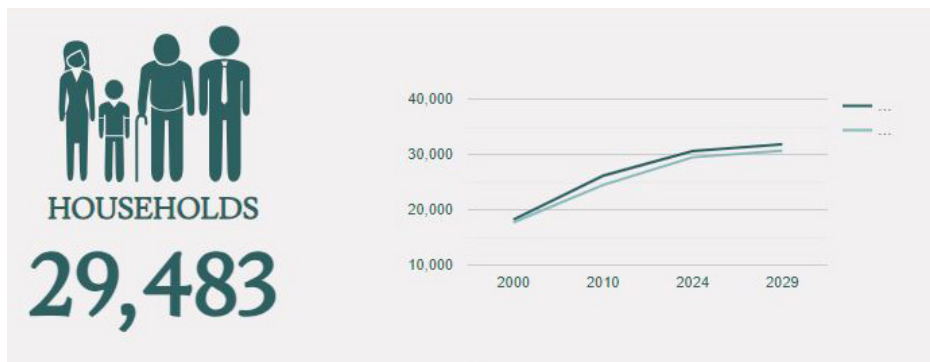
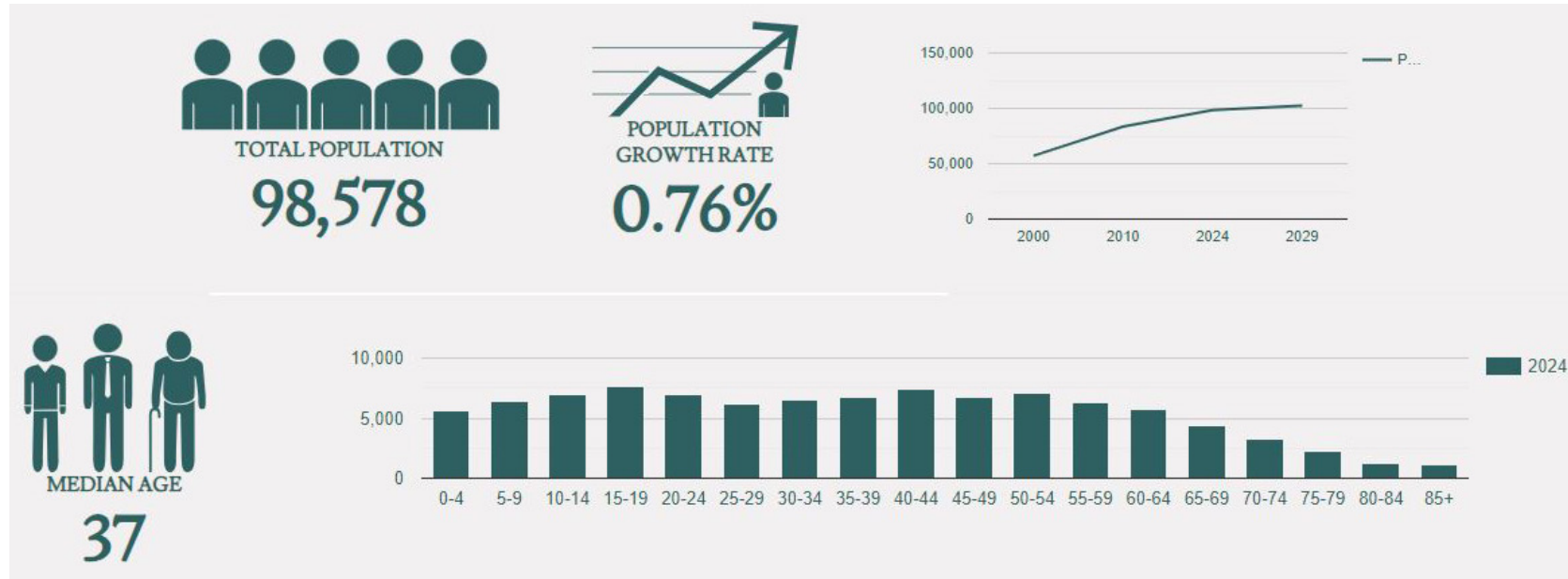


PROPERTY PHOTOS



DEMOGRAPHICS

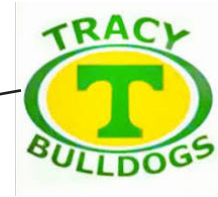
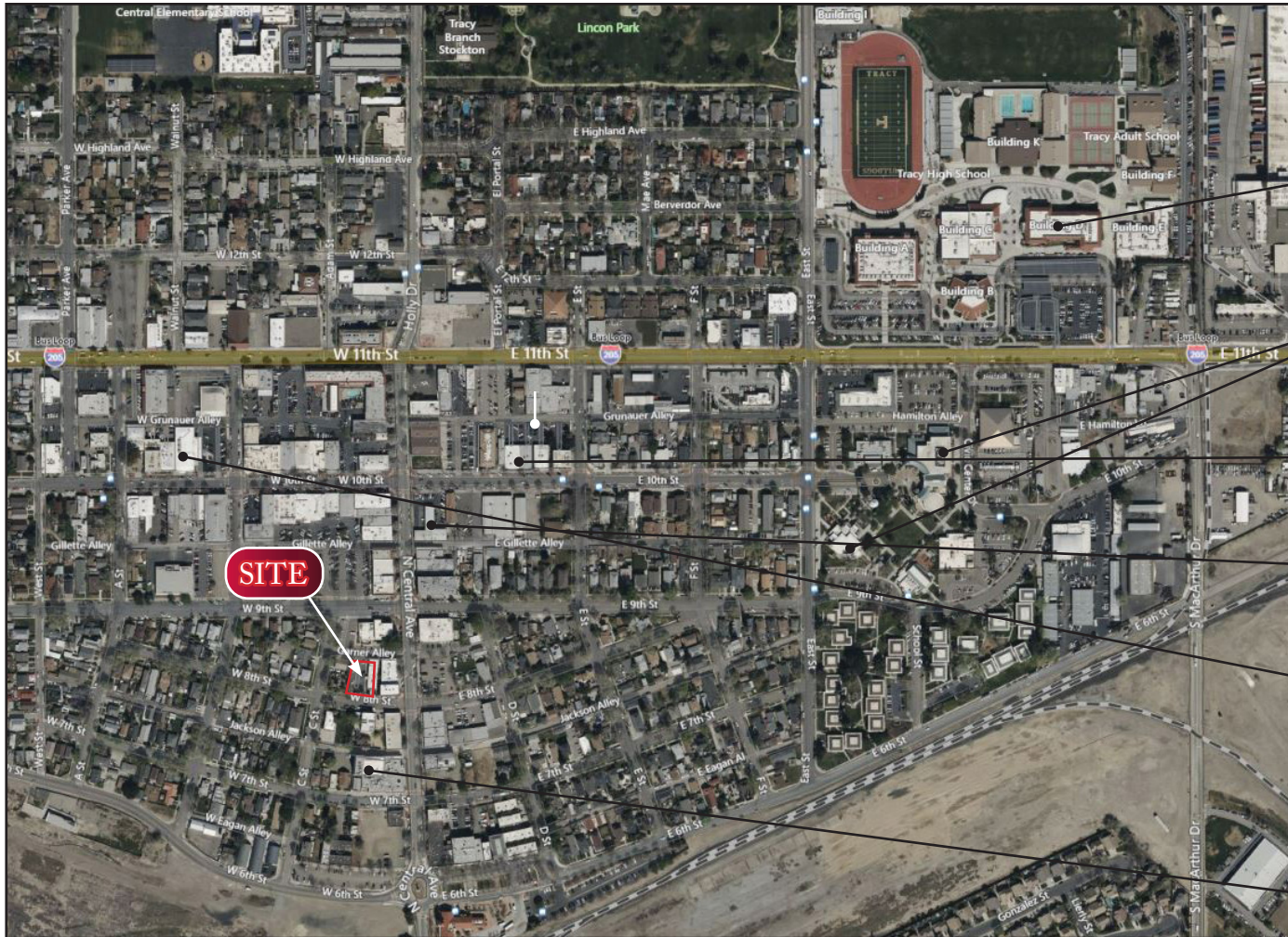
DEMOGRAPHICS



*SOURCE: ESRI, 09-26-2024

<https://www.cityoftracy.org>

NEARBY BUSINESSES



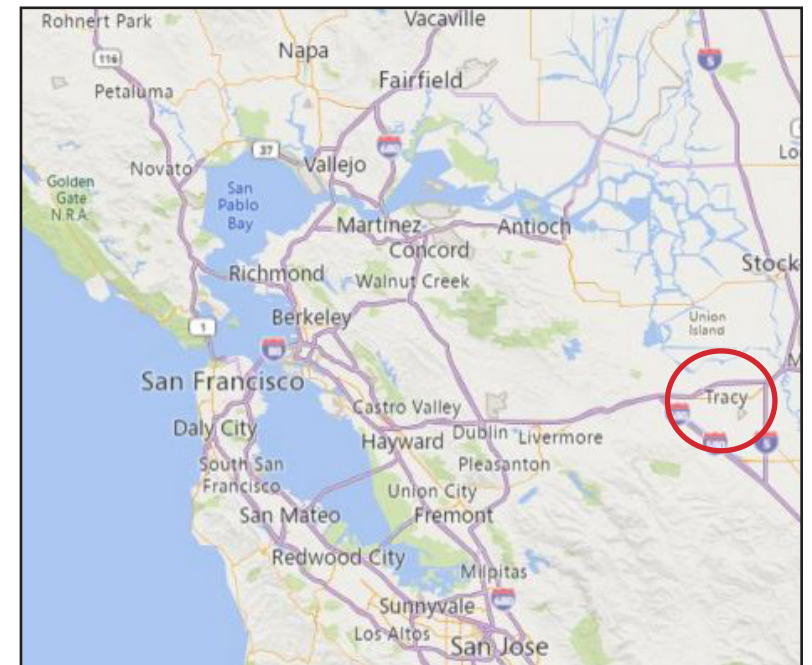
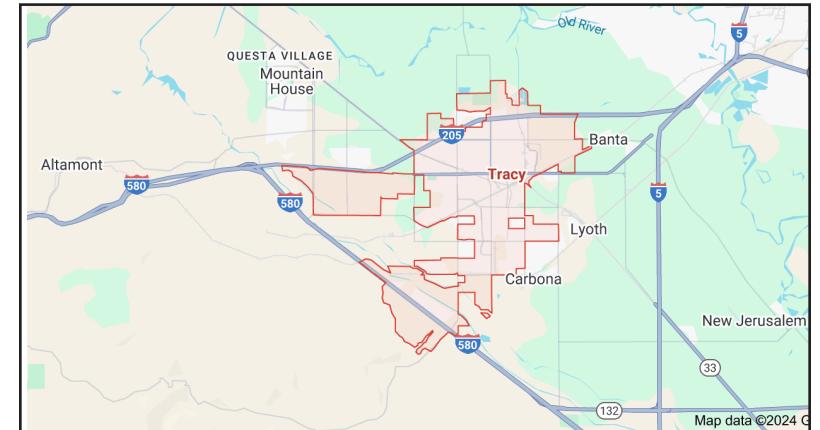
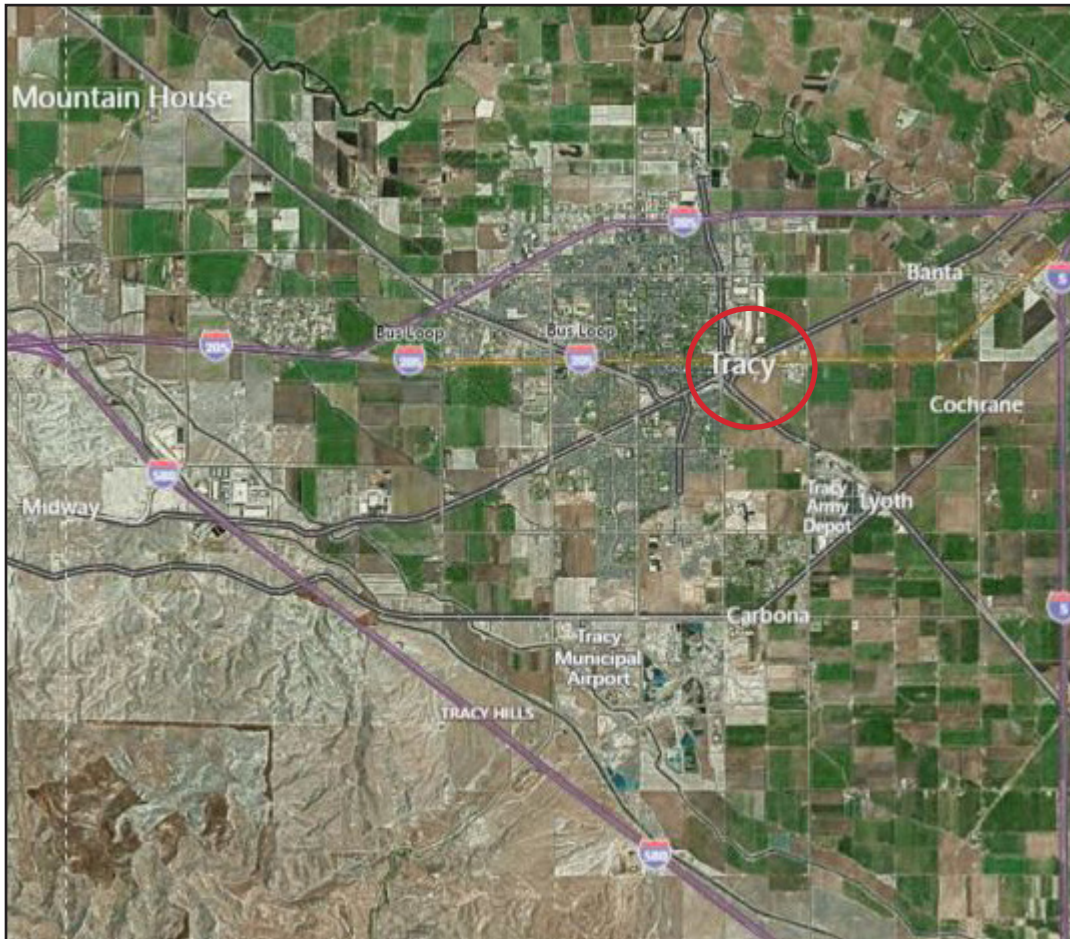
Downtown Tracy

This is a growing, vibrant city center with new and expanding possibilities at every corner.

It's a unique and authentic downtown, built upon strong community ties. Downtown Tracy combines historic charm with contemporary interest, showcasing a pleasing variety of restaurants, shops, services, and entertainment. It has once again become the center of local activity for residents, businesses, and visitors. Downtown Tracy has a rich history stretching from the 19th Century to the present.

Today it has an evolving mix of retail and service businesses — and a future filled with the prospects of expanded business activity. The downtown's commercial development is promoted and encouraged by the Tracy City Center Association, supported since its founding in 2010 by both property and business owners.

VICINITY & REGIONAL MAPS



FOR MORE INFORMATION CONTACT:

Jim Martin, SIOR
BRE # 01214270
jmartin@lee-associates.com
D 209.983.4088

All information furnished regarding property for sale, rental or financing is from sources deemed reliable, but no warranty or representation is made to the accuracy thereof and same is submitted to errors, omissions, change of price, rental or other conditions prior to sale, lease or financing or withdrawal without notice. No liability of any kind is to be imposed on the broker herein.