

# REDMOND HEIGHTS TECH CENTER

14935 NE 87TH STREET, REDMOND, WA 98052



## OFFICE / WAREHOUSE / FLEX BUSINESS PARK | OFFICE SPACE AVAILABLE

### LISTING INFORMATION

<b>AVAILABLE SPACE:</b>	Suite 160
<b>BUILDING SF:</b>	36,525 SF
<b>SUITE 160:</b>	6,304 SF
<b>SPACE TYPE:</b>	Office
<b>LEASE EXPIRATION:</b>	02/28/2028

**SUITE 160** offers abundant natural sunlight with perimeter private offices and conference rooms featuring full-height windows. The space is handicap accessible and designed with a large open floor plan that can flex for a variety of users. Ample storage options throughout make it functional for teams needing both collaborative workspace and room for files, inventory, or equipment.

### COMMENTS

Redmond Heights Tech Center is located in the Redmond Ridge area just off SR-520, providing quick access to Redmond, Bellevue, and the greater Eastside. The park sits near major employers and tech campuses, with convenient connectivity to I-405 and I-90 via SR-520.

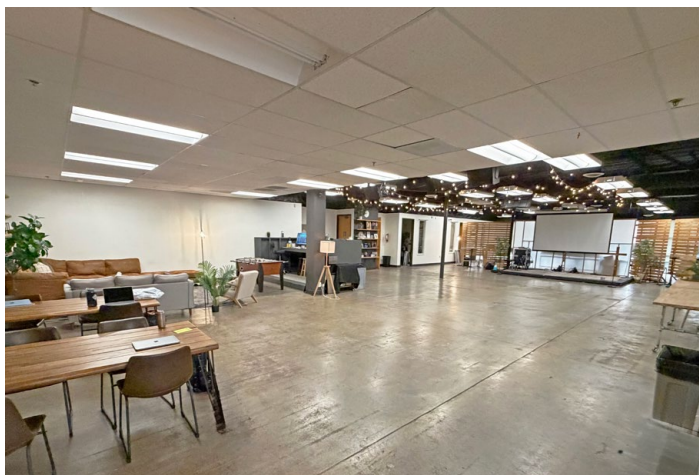
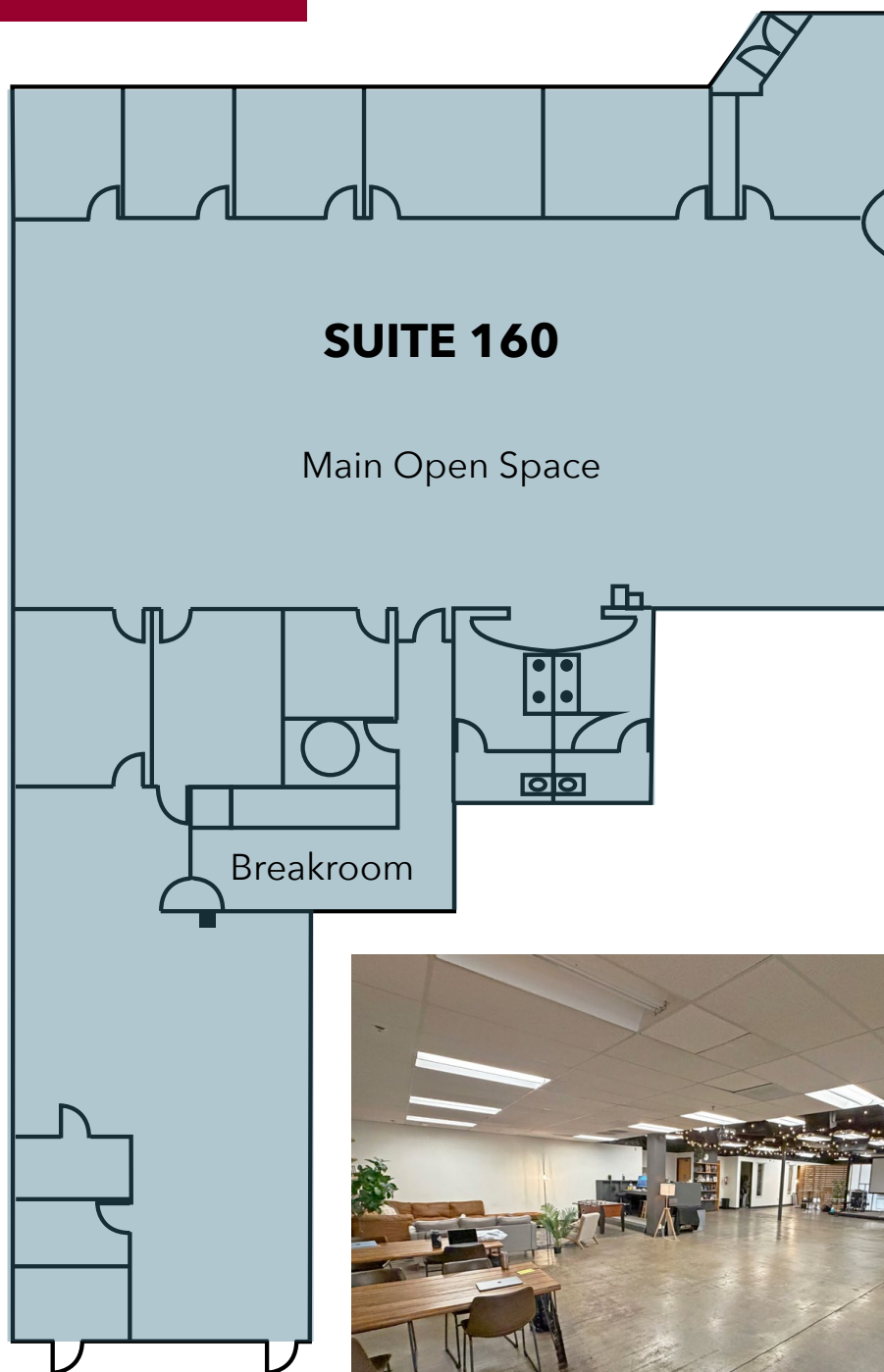
Surrounding amenities include a strong mix of retail and dining along the Redmond Ridge and Overlake corridors, plus nearby services and hotels. The location offers an easy commute and a professional office environment in a well-established Eastside submarket.



# REDMOND HEIGHTS TECH CENTER

14935 NE 87TH STREET, REDMOND, WA

## FLOOR PLAN



## CONTACT

### MASON COGLE

Senior Vice President

[mcogle@lee-associates.com](mailto:mcogle@lee-associates.com)

**D** 206.773.2687 | **C** 425.681.8008

All information furnished regarding property for sale, rental or financing is from sources deemed reliable, but no warranty or representation is made to the accuracy thereof and same is submitted to errors, omissions, change of price, rental or other conditions prior to sale, lease or financing or withdrawal without notice. No liability of any kind is to be imposed on the broker herein.



# REDMOND HEIGHTS TECH CENTER

14935 NE 87TH STREET, REDMOND, WA

## PHOTOS



## CONTACT

### MASON COGLE

Senior Vice President

[mcogle@lee-associates.com](mailto:mcogle@lee-associates.com)

**D** 206.773.2687 | **C** 425.681.8008

All information furnished regarding property for sale, rental or financing is from sources deemed reliable, but no warranty or representation is made to the accuracy thereof and same is submitted to errors, omissions, change of price, rental or other conditions prior to sale, lease or financing or withdrawal without notice. No liability of any kind is to be imposed on the broker herein.



# REDMOND HEIGHTS TECH CENTER

14935 NE 87TH STREET, REDMOND, WA

**LEE & ASSOCIATES**  
COMMERCIAL REAL ESTATE SERVICES



## CONTACT

### MASON COGLE

Senior Vice President

[mcogle@lee-associates.com](mailto:mcogle@lee-associates.com)

**D** 206.773.2687 | **C** 425.681.8008

All information furnished regarding property for sale, rental or financing is from sources deemed reliable, but no warranty or representation is made to the accuracy thereof and same is submitted to errors, omissions, change of price, rental or other conditions prior to sale, lease or financing or withdrawal without notice. No liability of any kind is to be imposed on the broker herein.