



PALM COAST, FL

1300 PALM COAST PKWY SW

4,348 SF ON 1.11 ACRES AVAILABLE FOR SUBLEASE



PROJECT DETAILS

1300 PALM COAST PKWY SW • 4,348 SF ON 1.11 ACRES • AVAILABLE FOR SUBLEASE

PROPERTY HIGHLIGHTS

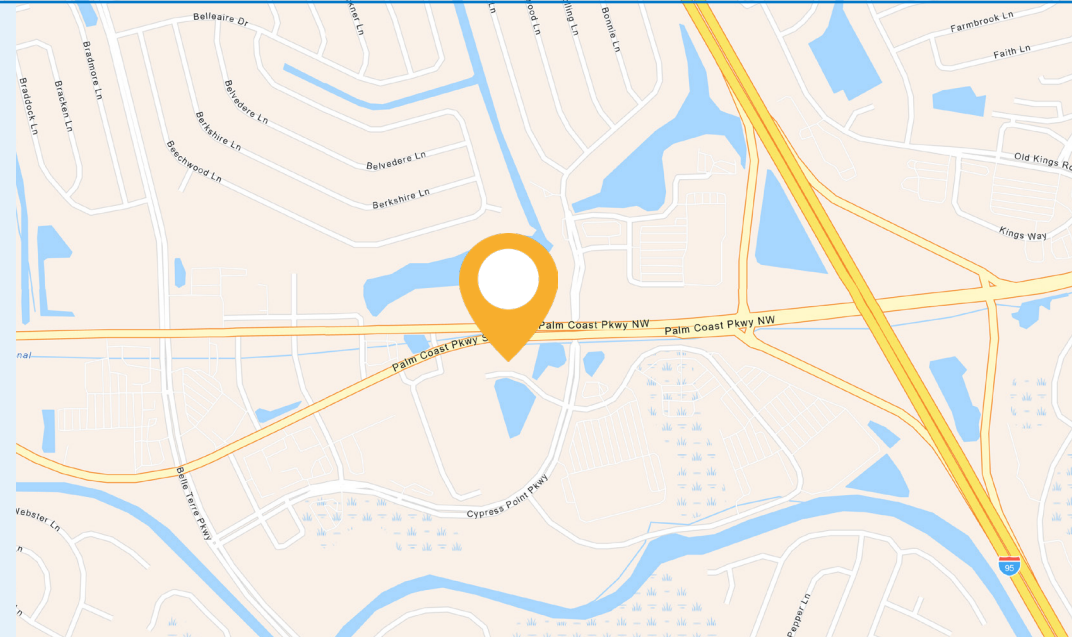
- Former Bank Branch with 28 parking spaces
- 5 Drive Thru lanes existing
- Highly visible site on Palm Coast Pkwy with 44,500 ADT
- Commercial Zoning

OFFERING SUMMARY

LEASE PRICE	Call for Pricing
BUILDING SIZE	4,348 SF
LOT SIZE	1.11 Acres

DEMOGRAPHICS

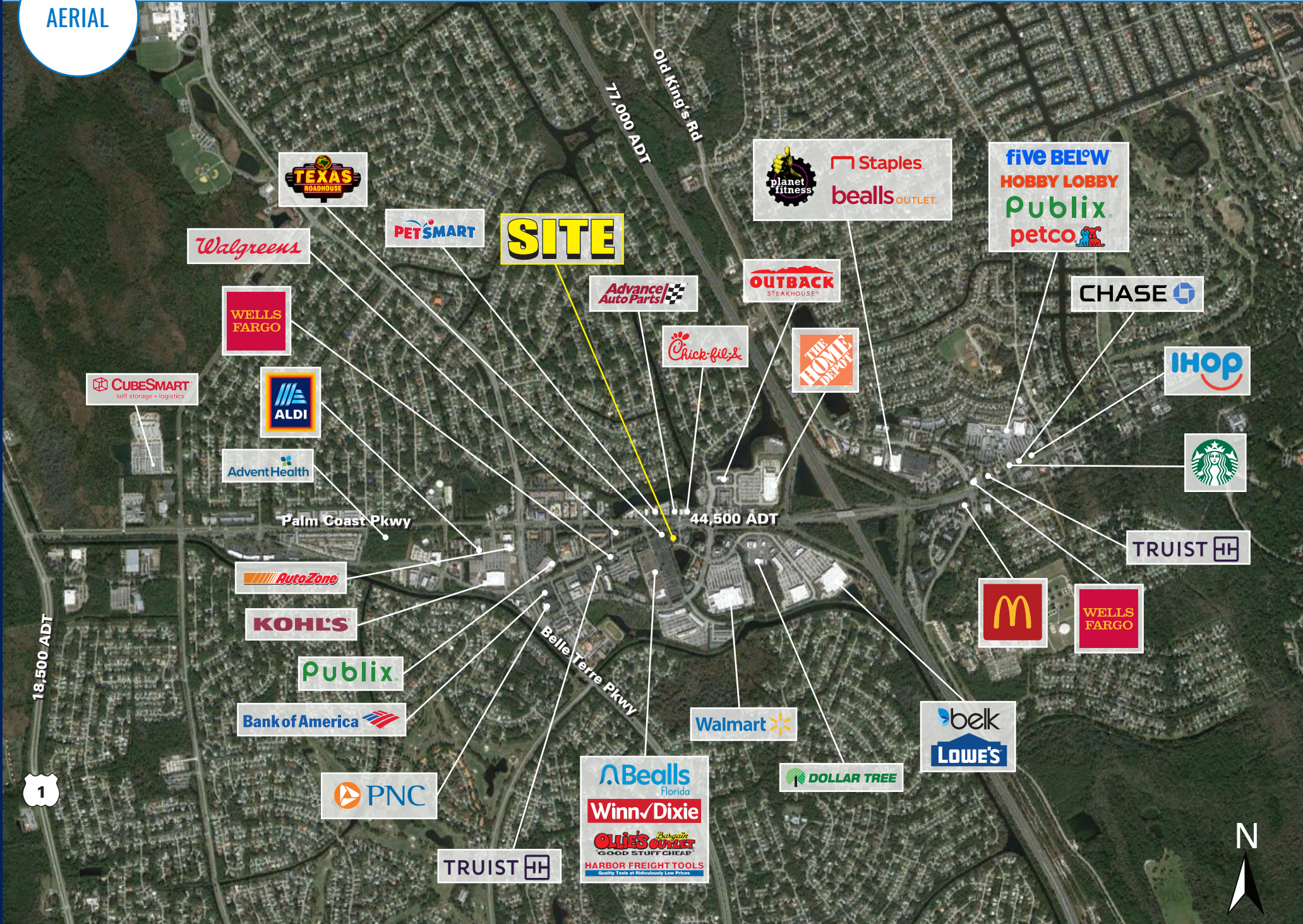
TOTAL POPULATION	3 MILE	5 MILE
1 MILE	54,236	86,604
6,465		
TOTAL HOUSEHOLDS	3 MILE	5 MILE
1 MILE	22,481	35,582
2,647		
MEDIAN HH INCOME	3 MILE	5 MILE
1 MILE	\$92,286	\$97,936
\$76,965		



AERIAL



AERIAL



SITE

44,500 ADT

Palm Coast Pkwy

Belle Terre Pkwy

18,500 ADT

77,000 ADT
Old King's Rd

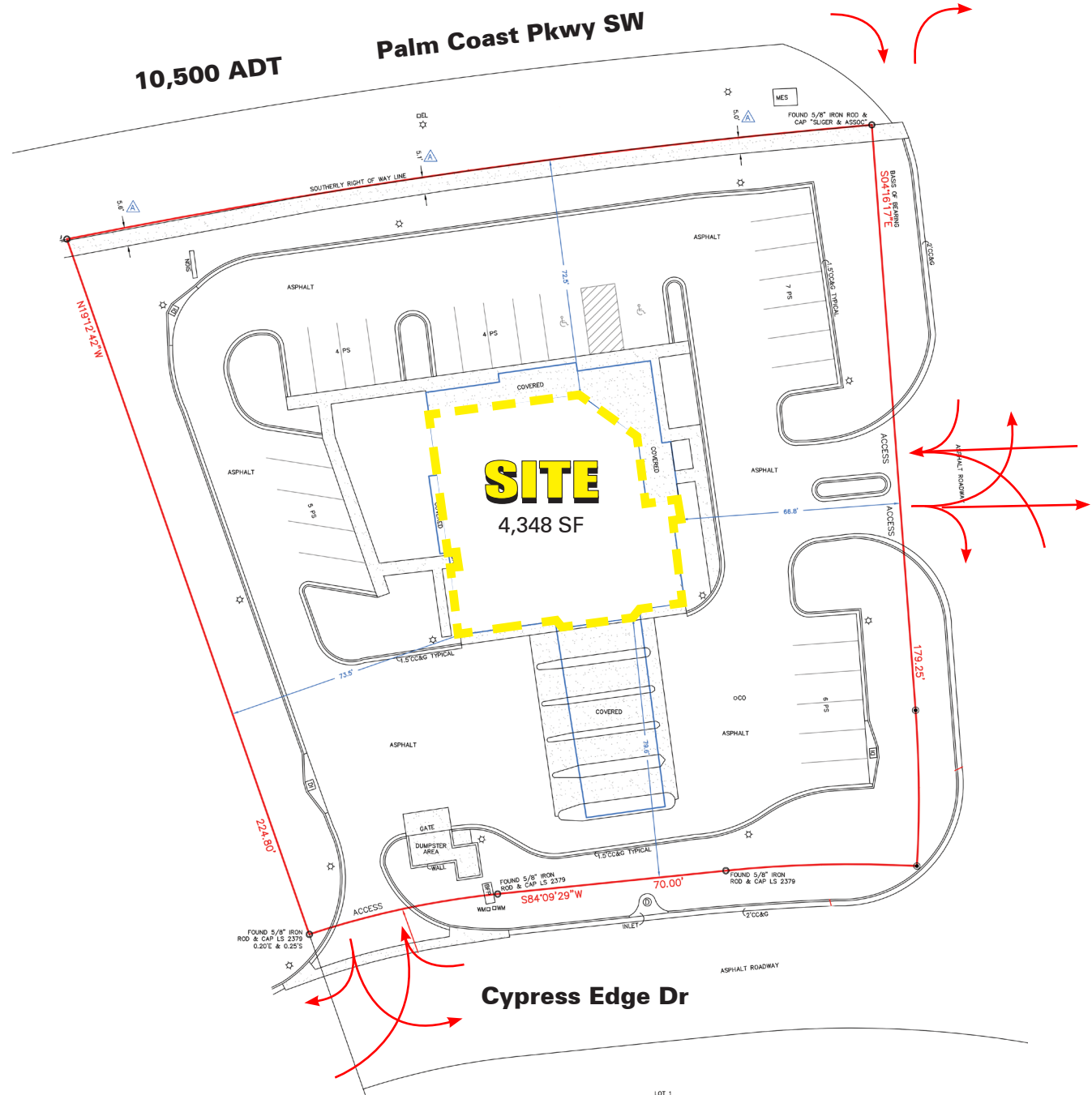


SITE
AERIAL



SITE PLAN

1300 PALM COAST PKWY SW • 4,348 SF ON 1.11 ACRES • AVAILABLE FOR SUBLEASE



PALM COAST, FL

1300 PALM COAST PKWY SW

4,348 SF ON 1.11 ACRES AVAILABLE FOR SUBLEASE

COLIN WARREN

516.314.3846

CWARREN@ATLANTICRETAIL.COM

TOM GODINO

561.424.3012

TGODINO@ATLANTICRETAIL.COM



ALBANY
ATLANTA
BOSTON
CHARLOTTE
LOS ANGELES
NEW YORK CITY
ORLANDO
PITTSBURGH
WEST PALM BEACH
HOLTEC BUILDING
1001 N US HWY ONE, SUITE 600
JUPITER, FL 33477
561.427.6699

WWW.ATLANTICRETAIL.COM

 [LINKEDIN.COM/COMPANY/ATLANTIC-RETAIL-PROPERTIES](https://www.linkedin.com/company/atlantic-retail-properties)

 [INSTAGRAM.COM/ATLANTIC_RETAIL/](https://www.instagram.com/atlantic_retail/)

 REALTY
RESOURCES