



**MEDICAL FOR LEASE**  
166 MAIN STREET (1ST FLOOR)  
LINCOLN PARK, NJ

**MEDICAL SUITE ON MAIN STREET**

**AVAILABLE SPACE**

- +/- 1100 sf Medical Built-Out Space
- Reception/Waiting Area
- Three (3) Exam Rooms with Plumbing
- Lab Area
- Two (2) Private Offices
- Two (2) Restrooms (1 ADA)
- Kitchenette/Break Area

**\$24.00 psf Plus Separately Metered Electric**

**PROPERTY FEATURES**

- Excellent Visibility on Main St.
- ADA Accessibility
- Ample On-Site Parking
- Easy Access to Routes 23, 202 and I 287
- Close Proximity to NJ Transit Train Station



For more information contact:

**EBONY PARHAM**

C: 732.236.6261

O: 973.884.4444 ext. 29

[eparham@newmarkrealestate.com](mailto:eparham@newmarkrealestate.com)

**ANNE O'LEARY**

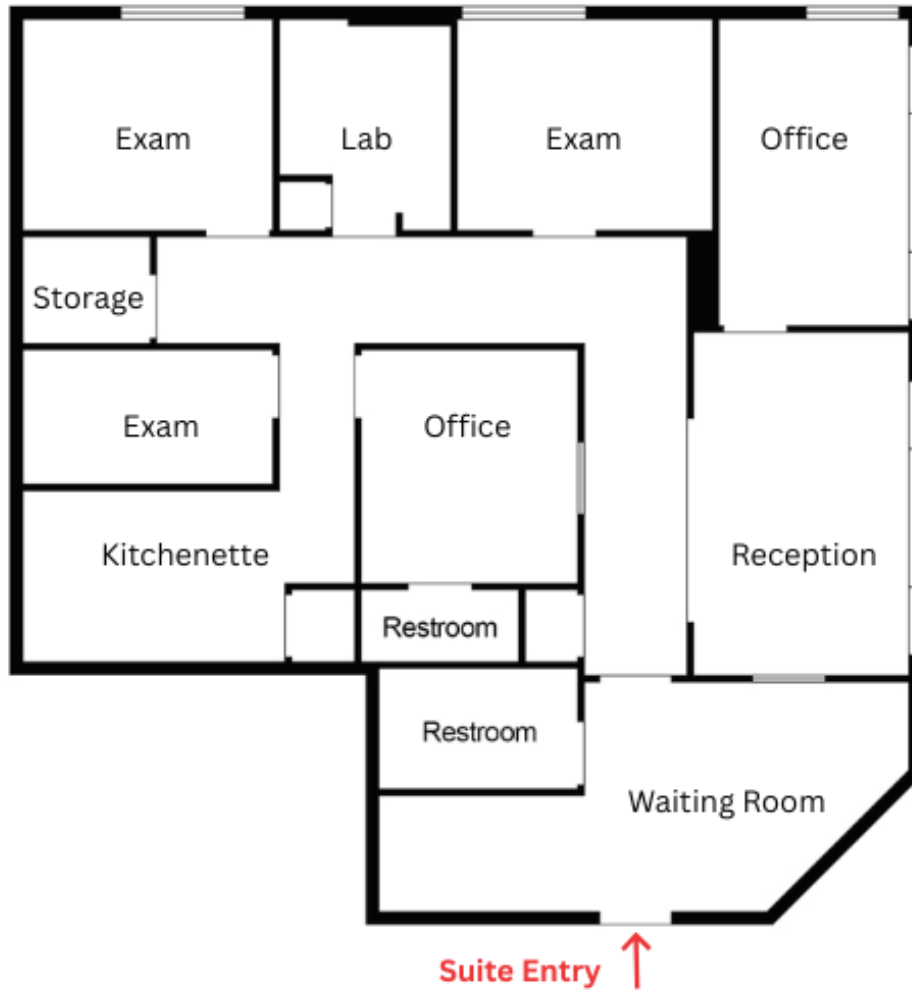
C: 973.464.5316

O: 973.884.4444 ext. 28

[aoleary@newmarkrealestate.com](mailto:aoleary@newmarkrealestate.com)

NewmarkRealEstate.com | 973.884.4444 | 7 E. Frederick Place Suite 500 Cedar Knolls New Jersey 07927

2026 Newmark Associates CRE. Information obtained from sources deemed to be reliable. However, no guarantee, warrant or representation is made as to accuracy of the information presented which is submitted subject to errors, omission, change of price, rental or other conditions, prior sale lease, financing or withdrawal without notice. Projections, opinions, assumptions or estimates are provided for example only, and may not represent current or future performance. Interested parties should consult their tax and legal advisors and conduct a thorough investigation of the property and any prospective transaction.



**Floor Plan Not Drawn to Scale.**



Office



Exam Room w/ Plumbing



Reception Area Suite 1B



Waiting Room for Suite 1B