

CENTRE 205

2600 SE 98th Ave | Portland, OR 97266

FOR LEASE

6 MONTHS FREE RENT TO ANY
LEASE SIGNED BY JULY 31, 2026



OFFICE SPACE AVAILABLE FOR LEASE

PERFECT FOR MEDICAL USE AND
COMMUNITY ORGANIZATIONS

DETAILS

- Lease rate: \$19.50 PSF, Full Service
- Size: ± 2,924- 8,000 SF
- Great window lines with view corridors

FEATURES

- Great freeway access – located directly off I-205 and SE Division St
- Inviting two-story glass atrium entrance
- Elevator served
- Floor plans featuring offices, classrooms, bullpen, and break rooms
- Multiple suite sizes available
- Abundant on-site parking
- Exterior signage potential with I-205 visibility with great traffic count
- 14 minutes from downtown Portland, 16 minutes from Vancouver, 12 minutes from Portland International Airport, and 10 minutes from Clackamas Town Center
- Minutes from numerous coffee, shopping, restaurant, fitness, grocery, hiking and mass transit options



05.08.2026

For more information or a property tour, please contact:

TIM PFEIFFER
503.225.8455
TimP@norris-stevens.com

RAYMOND DUCHEK
503.225.8492
RaymondD@norris-stevens.com

Norris & Stevens

INVESTMENT REAL ESTATE SERVICES



Information contained herein has been obtained from others and considered to be reliable; however, a prospective purchaser or lessee is expected to verify all information to their own satisfaction.

900 SW 5th Avenue • 17th Floor • Portland, OR 97204
503.223.3171 • norris-stevens.com

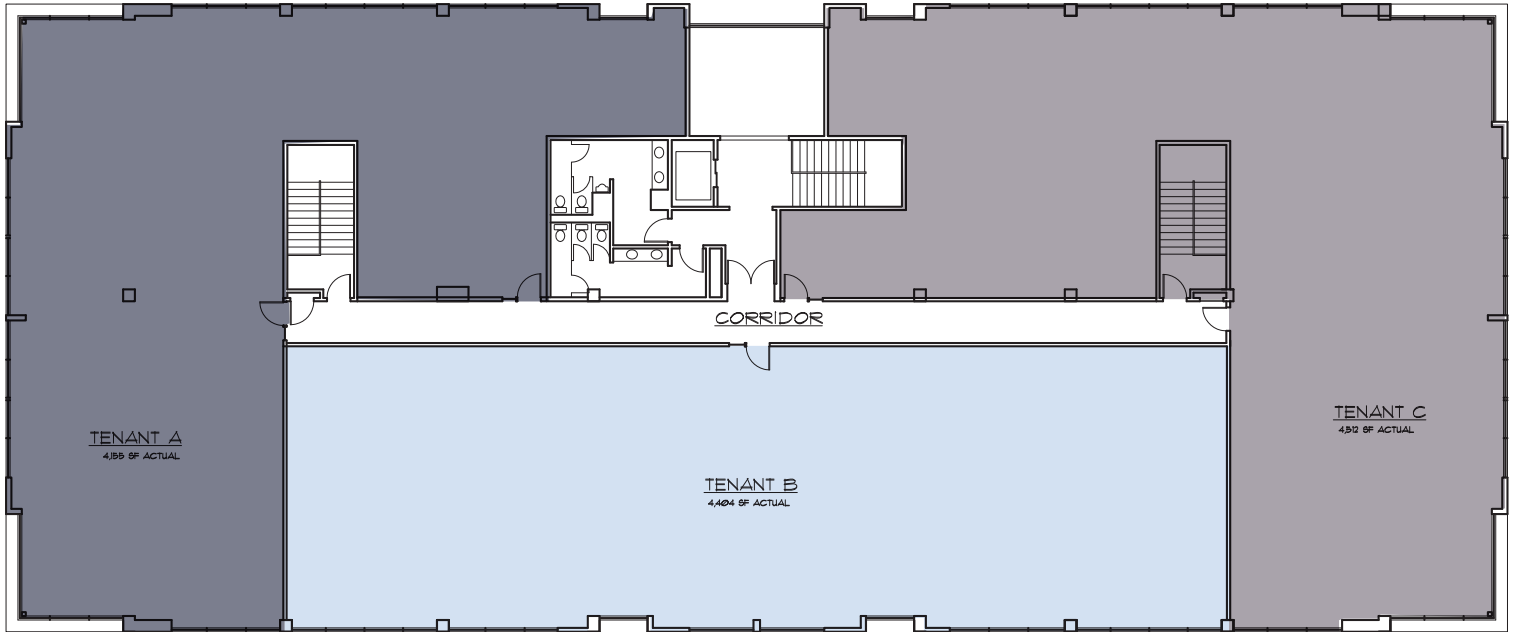
CENTRE 205

2600 SE 98th Ave | Portland, OR 97266

FOR LEASE

FLOOR PLAN

2ND FLOOR - POTENTIAL LAYOUT V1



2ND FLOOR - POTENTIAL LAYOUT V2



For more information or a property tour, please contact:

TIM PFEIFFER
503.225.8455
TimP@norris-stevens.com

RAYMOND DUCHEK
503.225.8492
RaymondD@norris-stevens.com

Norris & Stevens

INVESTMENT REAL ESTATE SERVICES



Information contained herein has been obtained from others and considered to be reliable; however, a prospective purchaser or lessee is expected to verify all information to their own satisfaction.

900 SW 5th Avenue • 17th Floor • Portland, OR 97204
503.223.3171 • norris-stevens.com

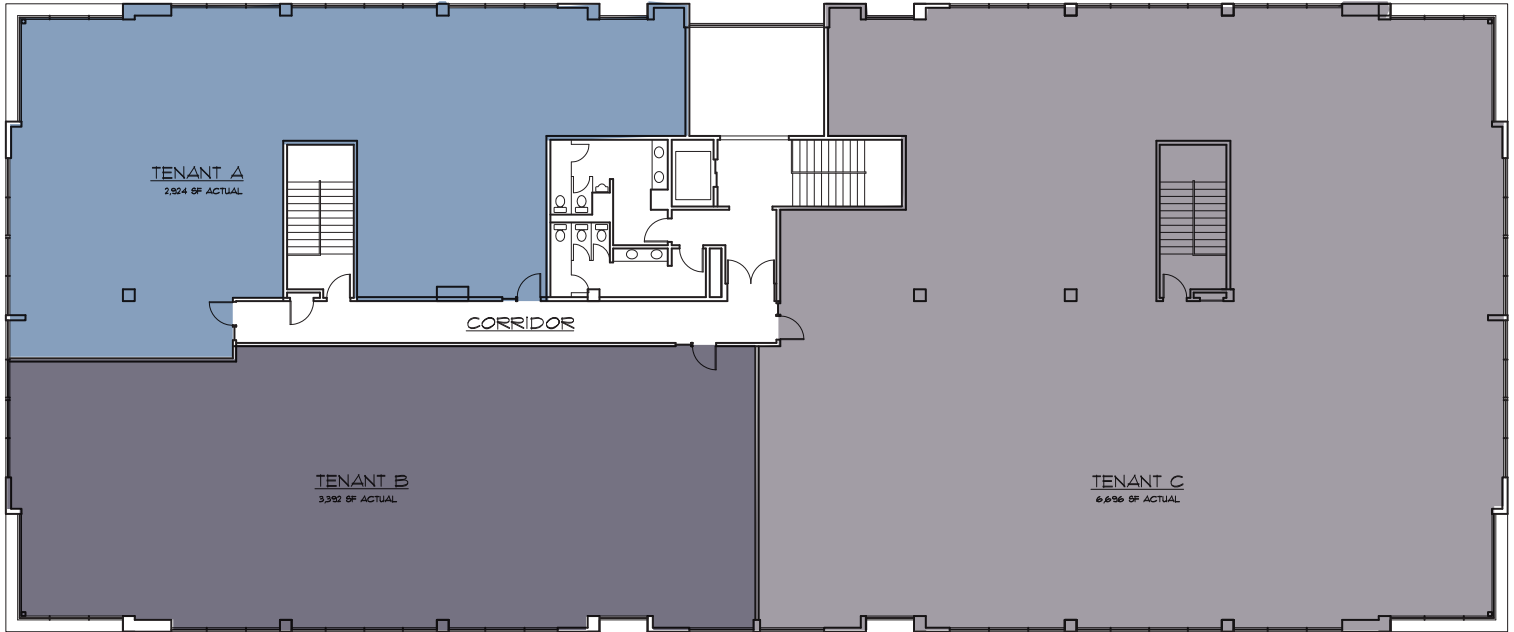
CENTRE 205

2600 SE 98th Ave | Portland, OR 97266

FOR LEASE

FLOOR PLAN

2ND FLOOR - POTENTIAL LAYOUT V3



For more information or a property tour, please contact:

TIM PFEIFFER
503.225.8455
TimP@norris-stevens.com

RAYMOND DUCHEK
503.225.8492
RaymondD@norris-stevens.com

Norris & Stevens

INVESTMENT REAL ESTATE SERVICES



Information contained herein has been obtained from others and considered to be reliable; however, a prospective purchaser or lessee is expected to verify all information to their own satisfaction.

900 SW 5th Avenue • 17th Floor • Portland, OR 97204
503.223.3171 • norris-stevens.com

CENTRE 205

2600 SE 98th Ave | Portland, OR 97266

FOR LEASE

PROPERTY PHOTOS



For more information or a property tour, please contact:

TIM PFEIFFER

503.225.8455

TimP@norris-stevens.com

RAYMOND DUCHEK

503.225.8492

RaymondD@norris-stevens.com

Norris & Stevens

INVESTMENT REAL ESTATE SERVICES

TCN
WORLDWIDE
REAL ESTATE SERVICES

AMO

Information contained herein has been obtained from others and considered to be reliable; however, a prospective purchaser or lessee is expected to verify all information to their own satisfaction.

900 SW 5th Avenue • 17th Floor • Portland, OR 97204
503.223.3171 • norris-stevens.com

CENTRE 205

2600 SE 98th Ave | Portland, OR 97266

FOR LEASE

PROPERTY PHOTOS



For more information or a property tour, please contact:

TIM PFEIFFER
503.225.8455
TimP@norris-stevens.com

RAYMOND DUCHEK
503.225.8492
RaymondD@norris-stevens.com

Norris & Stevens

INVESTMENT REAL ESTATE SERVICES



Information contained herein has been obtained from others and considered to be reliable; however, a prospective purchaser or lessee is expected to verify all information to their own satisfaction.

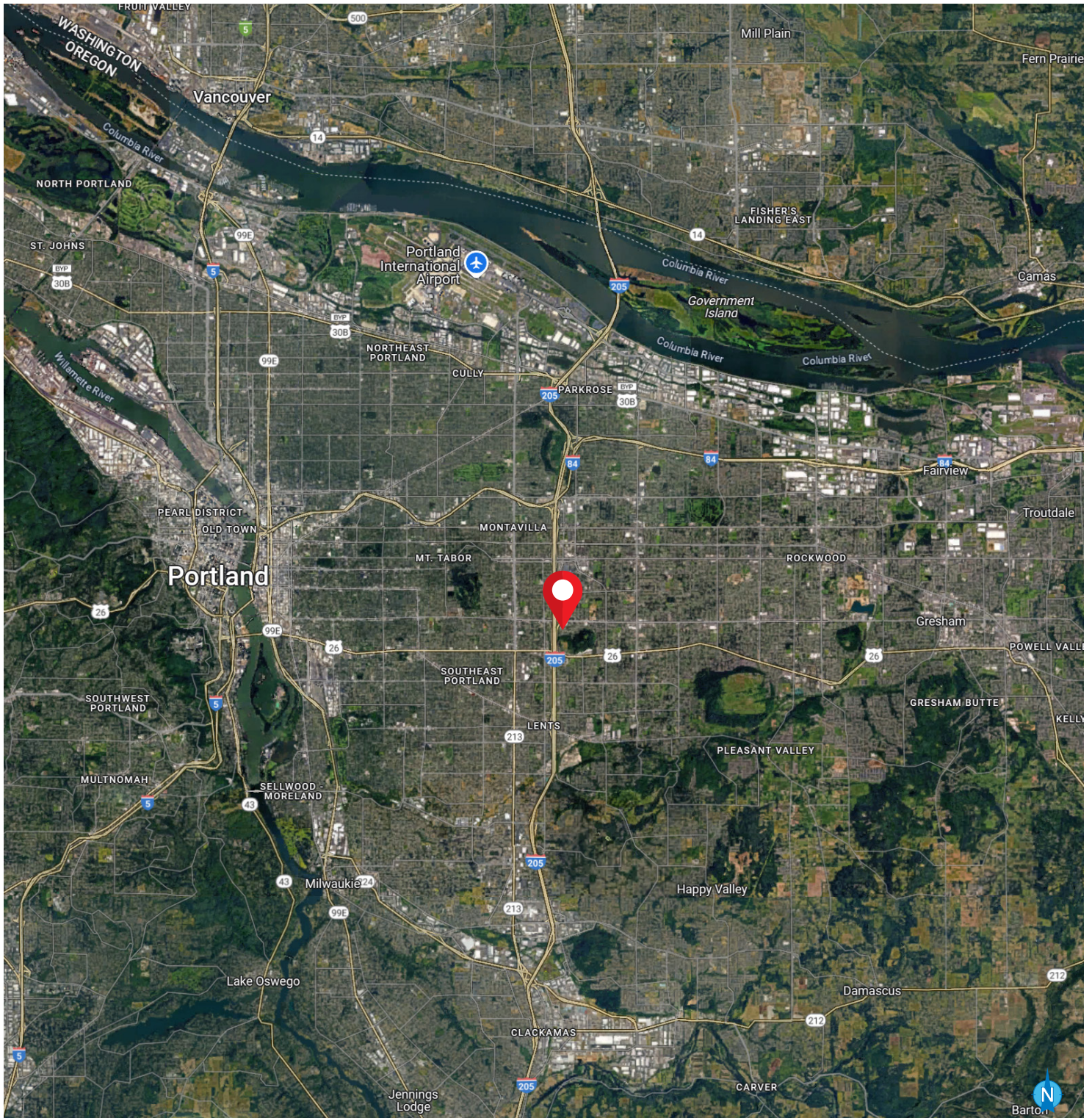
900 SW 5th Avenue • 17th Floor • Portland, OR 97204
503.223.3171 • norris-stevens.com

CENTRE 205

2600 SE 98th Ave | Portland, OR 97266

FOR LEASE

AREA MAP



For more information or a property tour, please contact:

TIM PFEIFFER
503.225.8455
TimP@norris-stevens.com

RAYMOND DUCHEK
503.225.8492
RaymondD@norris-stevens.com

Norris & Stevens

INVESTMENT REAL ESTATE SERVICES



Information contained herein has been obtained from others and considered to be reliable; however, a prospective purchaser or lessee is expected to verify all information to their own satisfaction.

900 SW 5th Avenue • 17th Floor • Portland, OR 97204
503.223.3171 • norris-stevens.com