

# FOR SALE OR LEASE

**±9,984 SF INDUSTRIAL BUILDING**

13810 Bentley Pl, Cerritos, CA 90703

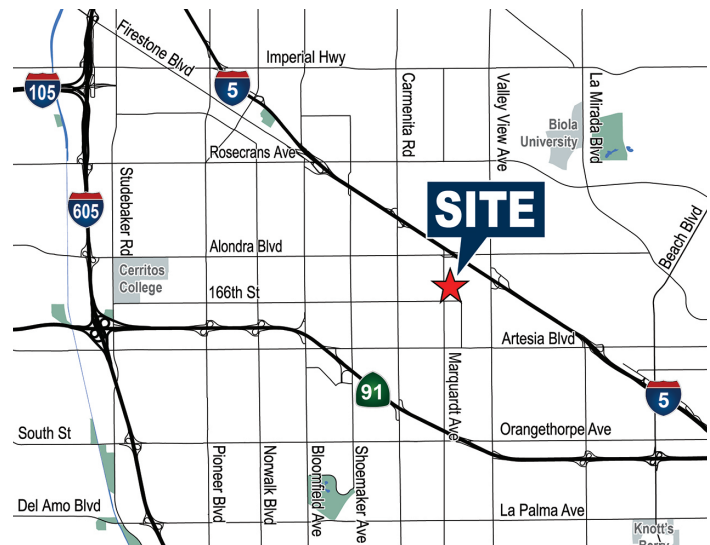
# Voit

REAL ESTATE SERVICES



## PROPERTY FEATURES

- Two (2) Ground Level Doors
- 16' - 18' Warehouse Clearance (Verify)
- Small Fenced Yard
- Reception, 4 Offices, Conference Room, 2 Restrooms
- 200 Amps – 120/240V 3 Phase Power (Verify)
- Desirable Cerritos Location
- Close Proximity to 5 & 91 Freeways
- New Roof Coating 2024



Note: Measurements and sizes are approximate and are subject to change.

### ZAC KOLANDER

Senior Associate

Lic #02096759

(714) 935-2301

zkolander@voitco.com

### SELDEN MCKNIGHT

Vice President | Partner

Lic. #02027919

(714) 935-2323

smcknight@voitco.com

### STAN S. KWAK

Senior VP | Partner

Lic. #01824776

(714) 935-2327

skwak@voitco.com

# Voit

REAL ESTATE SERVICES

**CLIENT**  
RESOURCE GROUP

2400 E. Katella Avenue, Suite 750  
Anaheim, CA 92806

www.VoitCo.com

# FOR SALE OR LEASE

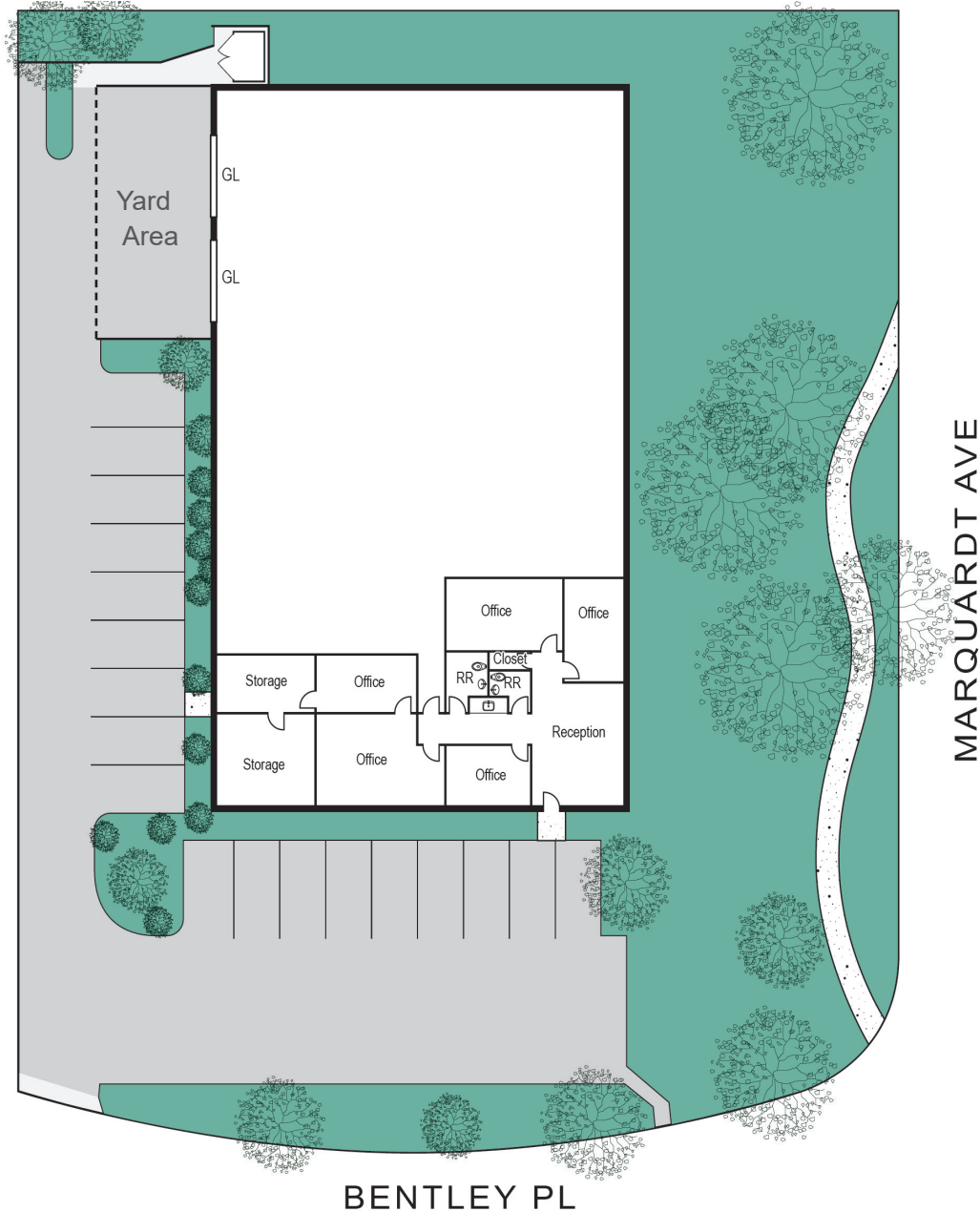
**±9,984 SF INDUSTRIAL BUILDING**

13810 Bentley Pl, Cerritos, CA 90703

# Voit

REAL ESTATE SERVICES

## SITE PLAN



BENTLEY PL

NOT TO SCALE

Note: Measurements and sizes are approximate and are subject to change.

### ZAC KOLANDER

Senior Associate

Lic #02096759

(714) 935-2301

zkolander@voitco.com

### SELDEN MCKNIGHT

Vice President | Partner

Lic. #02027919

(714) 935-2323

smcknight@voitco.com

### STAN S. KWAK

Senior VP | Partner

Lic. #01824776

(714) 935-2327

skwak@voitco.com

# Voit

REAL ESTATE SERVICES

**CLIENT**  
RESOURCE GROUP

2400 E. Katella Avenue, Suite 750  
Anaheim, CA 92806

www.VoitCo.com