

7350 East Progress Place

Greenwood Village, Colorado 80111

FOR LEASE

2 STORY OFFICE BUILDING



Attractive 2 story office building located in the heart of Greenwood Plaza area, just south of East Bellevue Avenue on South Quebec Street at East Progress Place with quick access to I-25 and I-225. Two floors of approximately 17,800 square feet designed to accommodate large or small tenants. Offices overlook a public park with great mountain views. Owner occupied with showers, lockers and exercise room. RTD Call-n-Ride is available from the building to Orchard Station. The property is within easy walking distance to the Village Shops at The Landmark.



Property Features

Year Built: 1981

Zoned: B-1

Common Area Factor: 16%

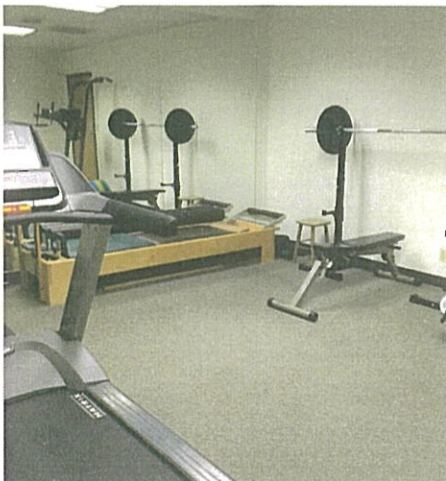
Elevator: 1

Number of Floors: 2

Total Square Feet: 35,975

Parking: 3 : 1,000 SF

Internet: Comcast



7350 East Progress Place

Greenwood Village, Colorado 80111

FOR LEASE

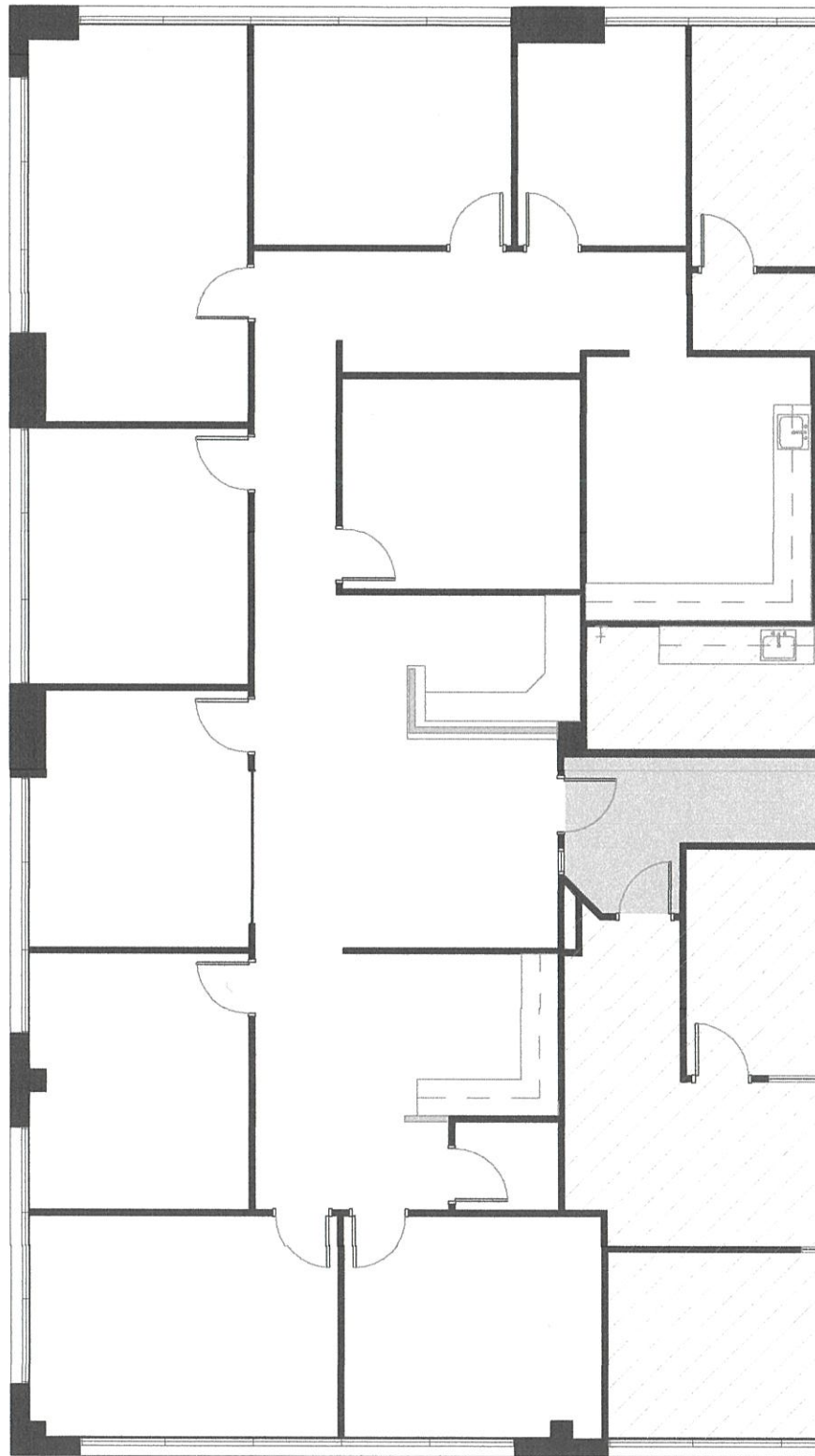
2 STORY OFFICE BUILDING



John M. Ash, Principal
303-229-9530
jash@ashcommercialrealty.com

ASH COMMERCIAL REALTY

No warranty or representation, express or implied, is made to the accuracy or completeness of the information contained herein, and same is submitted subject to errors, omissions, change of price, rental or other conditions, withdrawal without notice, and to any special listing conditions imposed by the property owner(s). As applicable, we make no representation as to the condition of the property (or properties) in question.



GREENWOOD VISTA
SUITE 205
SECOND FLOOR
MAY 28, 2025

3,346 RSF

