

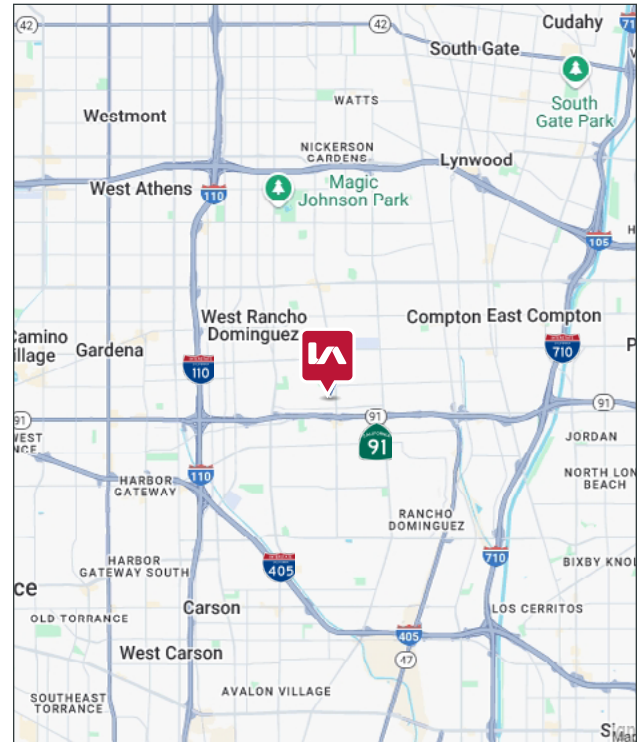


PROPERTY FEATURES

AVAILABLE **±1,900 SF – ±11,500 SF**

ZONING **CAML**

- Common Area Maintenance Fee: \$0.08 / SF
- Fenced & Gated Multi-Tenant Industrial Park
- Professionally Managed & Maintained Business Park
- Easy Access to Parking
- Immediate Access to 91, 110 & 405 Freeways
- Recently Renovated Industrial/Flex Units
- 3D Matterport Virtual Tour Available to View



LOCAL EXPERTISE. INTERNATIONAL REACH. WORLD CLASS.

Max P. Eddy

Associate | Cal DRE# 02163858

P: +1(562) 354-2538

E: meddy@leelalb.com

Brandon Carrillo

Principal | Cal DRE# 01745362

P: +1(562) 354-2510

E: bcarrillo@leelalb.com

Garrett Massaro, SIOR

Principal | Cal DRE# 01771471

P: +1(562) 354-2516

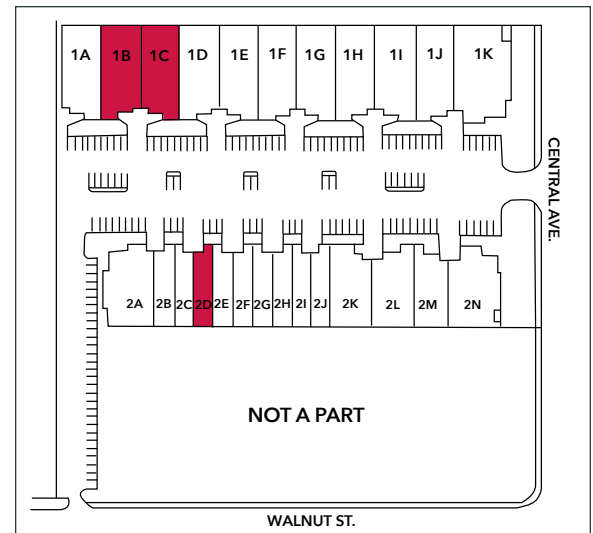
E: gmassaro@leelalb.com

Copyright © Lee & Associates. All rights reserved. No part of this work may be reproduced or distributed without written permission of the copyright owner. The information contained in this report was gathered by Lee & Associates from sources believed to be reliable. Lee & Associates, however, makes no representation concerning the accuracy or completeness of such information and expressly disclaims any responsibility for any inaccuracy contained herein.

17101 CENTRAL AVE AVAILABLE SUITES

| UNIT | SQ FT | RATE | DESCRIPTION | 3D TOUR |
|------|------------|---|--|------------------------------|
| 1B | ± 4,800 SF | \$1.00/SF Gross (\$4,800.00 / Month) | Available Now. 11' x 12' GL Door. 15' Clear Height. Reception, Private Office, Large Warehouse Area. | VIRTUAL TOUR |
| 1C | ±4,800 SF | \$1.00/SF Gross (\$4,800.00 / Month) | Available Now. 11' x 12' GL Door. 15' Clear Height. Reception, Private Office, Large Warehouse Area. 200 A, 240 V, 3 Phase Power | VIRTUAL TOUR |
| 1B+C | ±9,600 SF | \$1.00/SF Gross (\$9,600.00 / Month) | Available Now. 11' x 12' GL Door. 15' Clear Height. Reception, Private Office, Large Warehouse Area. 200 A, 240 V, 3 Phase Power | |
| 2D | ±1,900 SF | \$1.00/SF Gross (\$1,900.00 / Month) | Available Now. 1 GL Door. Clear Span Warehouse. Private Office. | |

Pricing Note: Teaser Rate for Deals Signed Before March 1, 2026



LOCAL EXPERTISE. INTERNATIONAL REACH. WORLD CLASS.

Max P. Eddy

Associate | Cal DRE# 02163858

P: +1(562) 354-2538

E: meddy@leelalb.com

Brandon Carrillo

Principal | Cal DRE# 01745362

P: +1(562) 354-2510

E: bcarrillo@leelalb.com

Garrett Massaro, SIOR

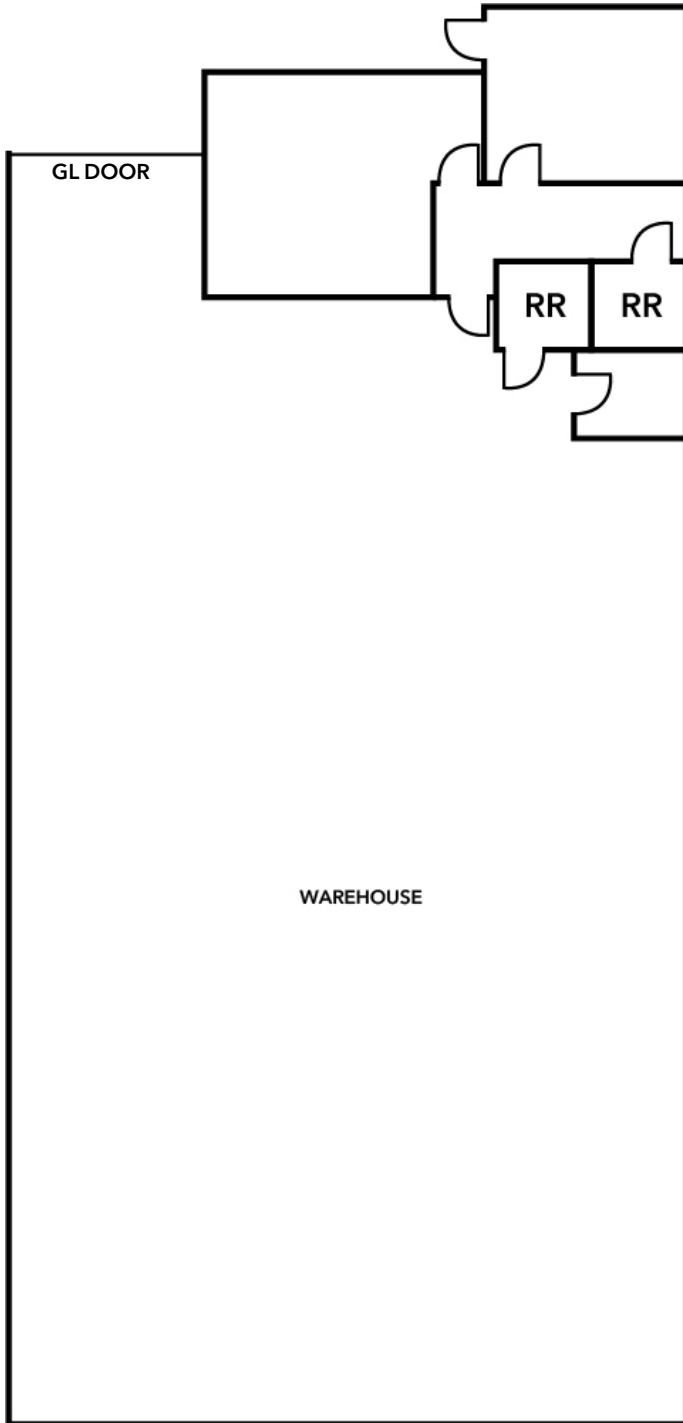
Principal | Cal DRE# 01771471

P: +1(562) 354-2516

E: gmassaro@leelalb.com

Copyright © Lee & Associates. All rights reserved. No part of this work may be reproduced or distributed without written permission of the copyright owner. The information contained in this report was gathered by Lee & Associates from sources believed to be reliable. Lee & Associates, however, makes no representation concerning the accuracy or completeness of such information and expressly disclaims any responsibility for any inaccuracy contained herein.

17101 CENTRAL AVE - UNIT 1B- FLOOR PLAN
(NOT DRAWN TO SCALE)



LOCAL EXPERTISE. INTERNATIONAL REACH. WORLD CLASS.

Max P. Eddy

Associate | Cal DRE# 02163858

P: +1(562) 354-2538

E: meddy@leelalb.com

Brandon Carrillo

Principal | Cal DRE# 01745362

P: +1(562) 354-2510

E: bcarrillo@leelalb.com

Garrett Massaro, SIOR

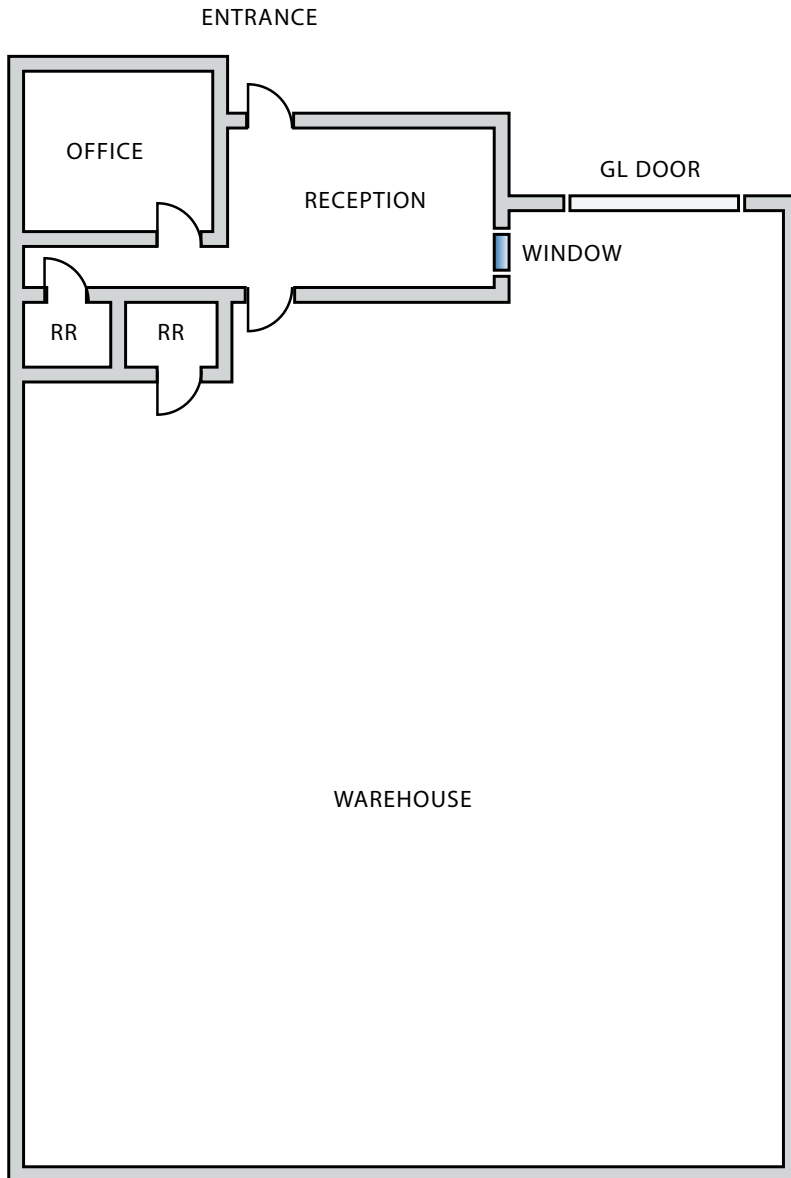
Principal | Cal DRE# 01771471

P: +1(562) 354-2516

E: gmassaro@leelalb.com

Copyright © Lee & Associates. All rights reserved. No part of this work may be reproduced or distributed without written permission of the copyright owner. The information contained in this report was gathered by Lee & Associates from sources believed to be reliable. Lee & Associates, however, makes no representation concerning the accuracy or completeness of such information and expressly disclaims any responsibility for any inaccuracy contained herein.

17101 CENTRAL AVE - UNIT 1C- FLOOR PLAN
(NOT DRAWN TO SCALE)



LOCAL EXPERTISE. INTERNATIONAL REACH. WORLD CLASS.

Max P. Eddy

Associate | Cal DRE# 02163858

P: +1(562) 354-2538

E: meddy@leelalb.com

Brandon Carrillo

Principal | Cal DRE# 01745362

P: +1(562) 354-2510

E: bcarrillo@leelalb.com

Garrett Massaro, SIOR

Principal | Cal DRE# 01771471

P: +1(562) 354-2516

E: gmassaro@leelalb.com

Copyright © Lee & Associates. All rights reserved. No part of this work may be reproduced or distributed without written permission of the copyright owner. The information contained in this report was gathered by Lee & Associates from sources believed to be reliable. Lee & Associates, however, makes no representation concerning the accuracy or completeness of such information and expressly disclaims any responsibility for any inaccuracy contained herein.