



**CAP RATE PROPERTY FOR SALE - 9300 W
CR 60, MIDLAND, TX 7977!**



FOR SALE

**9300 CO RD 60,
MIDLAND, TX
79707**

CONTACT

THOMAS JOHNSTON

432-934-3333



HIGHLIGHTS

- 10.05% CAP RATE
- PRESIDENTIAL MANCAMP HOUSING ALL REMODELED
- 5.5 ACRES
- 100% OCCUPIED

The Real Estate Ranch



Description

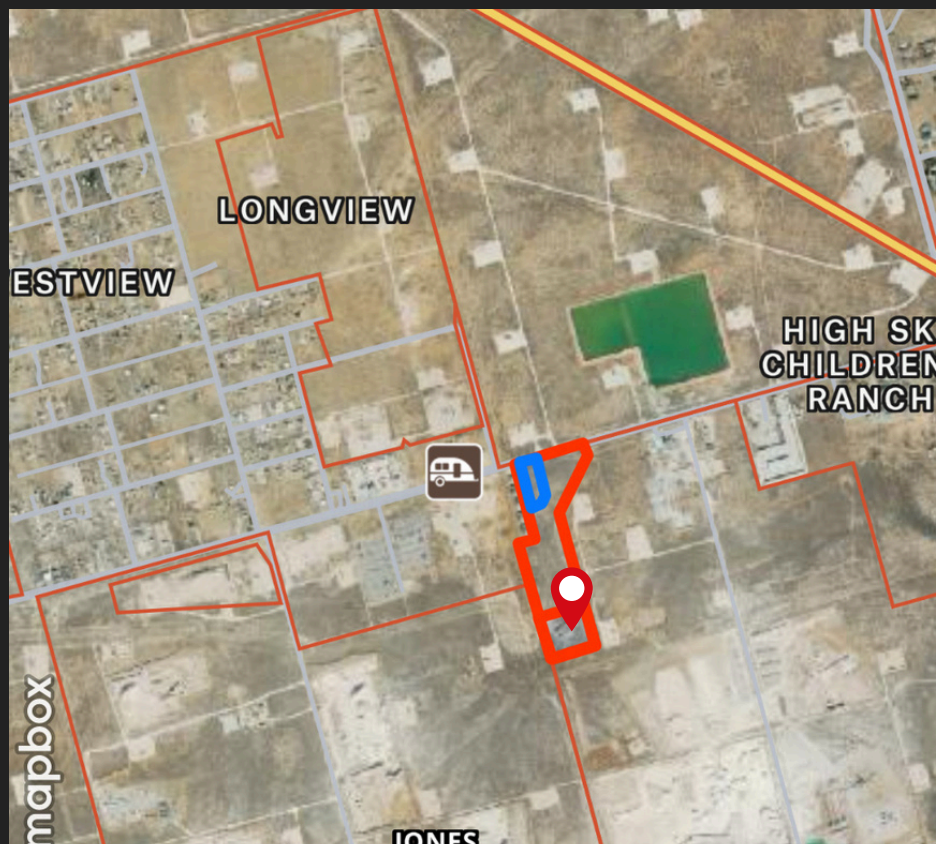


Amazing 10 Cap Property On The City Limit Line on 5.5 acres, Presidential ManCamp Housing All Remodeled in 2013, The Washington is a 2656 sqft Home w/ 3 Bed 2 Bath Rents for \$4500 a month, The Lincoln is a 4 Bed 2 Bath 1350 sqft Rents for \$4500 a month, The Jefferson is 1 Bed 1 Bath Rents for \$1400 a month, The Shop is 2500 sqft w/ 3 Pull In Bays. Gross Rents are \$163,200 & Net Rent to Owner is \$109,404 a year. It is hard to find a Similar Package this close to city & Situated between 2 Major PetroPlex Hubs, Convenient to Midland, Odessa, Andrews, & Seminole. Call us today to Make Your Investment.



Directions

**NEXT TO HIGH SKY
CHILDREN'S
HOME**



SITE PHOTOS:

the Real Estate Ranch



SITE - WASHINGTON:

*the Real Estate
Ranch*



SITE - WASHINGTON:

the Real Estate
Ranch



SITE - JEFFERSON:

the Real Estate Ranch



SITE - LICOLN:

the Real Estate Ranch



SITE - BUILDING:

the Real Estate
Ranch



the Real Estate Ranch

**9300 CO RD 60,
MIDLAND, TX 79707**



**Presented By
Thomas Johnston**

432-934-3333

THE REAL ESTATE RANCH

432-688-8200