

**AVISON  
YOUNG**

# 2 Centennial Drive

Peabody, MA



**Newly Renovated, High-Quality Flex  
Space Available For Lease**

**Jason Levendusky**  
617 448 4004  
[jason.levendusky@avisonyoung.com](mailto:jason.levendusky@avisonyoung.com)

**Michael Dalton**  
617 838 0022  
[michael.dalton@avisonyoung.com](mailto:michael.dalton@avisonyoung.com)

**Jay Carnevale**  
617 548 0129  
[jay.carnevale@avisonyoung.com](mailto:jay.carnevale@avisonyoung.com)

# If this were your location, You'd already be at work.

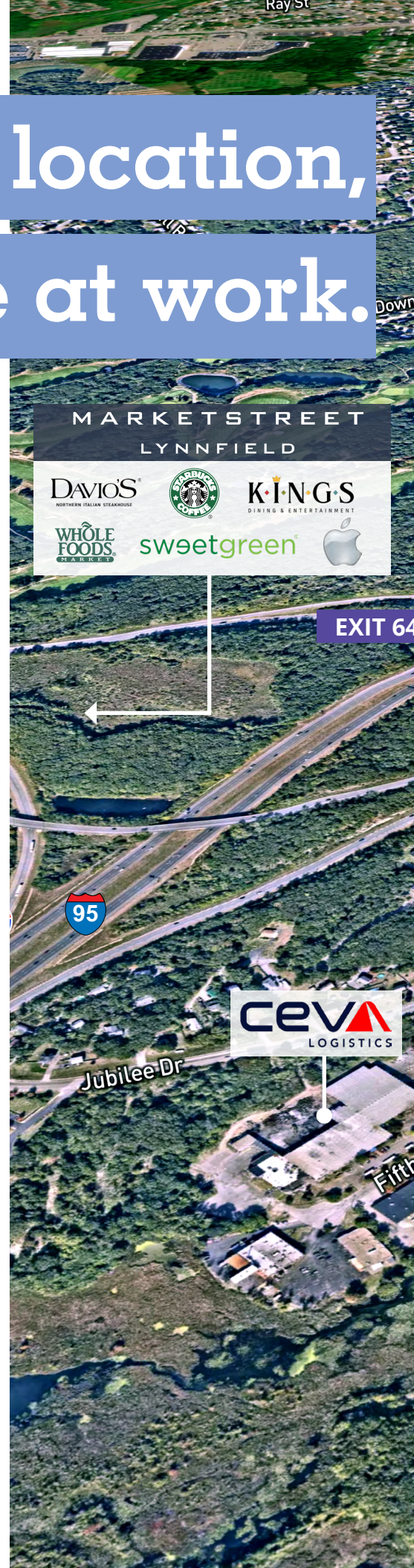
Located adjacent to Route 128, Interstate 95, and Route 1, 2 Centennial Drive offers quick, direct access to downtown Boston while maintaining the convenience of a suburban location. Nearby amenities, such as, the Northshore Mall and the Lynnfield Marketstreet provide tenants with an abundance of quality retail and restaurants.

**Immediate**  
access to Route 128/I-95

**5 minute**  
drive to Route 1

**22 minute**  
drive to Downtown Boston

**30 minute**  
drive to Boston Logan Airport







Peabody Bikeway



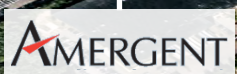
EXIT 65



Barton Associates



Centennial Dr



Centennial Dr

First Ave



Lynnfield St

AVISON  
YOUNG





## Strong talent, proven location

Conveniently located in the heart of Boston's North Shore, 2 Centennial Drive offers a rare opportunity to join a collective of strong corporate neighbors, and access diverse area amenities, a strong talent base, and the convenient suburban location. 2 Centennial is an ideal opportunity for a host of mid-sized suburban tenants looking for high quality space in one of Greater Boston's most coveted business parks.



Flexible use



Talented workforce



Direct access to  
highways



Abundant area  
amenities



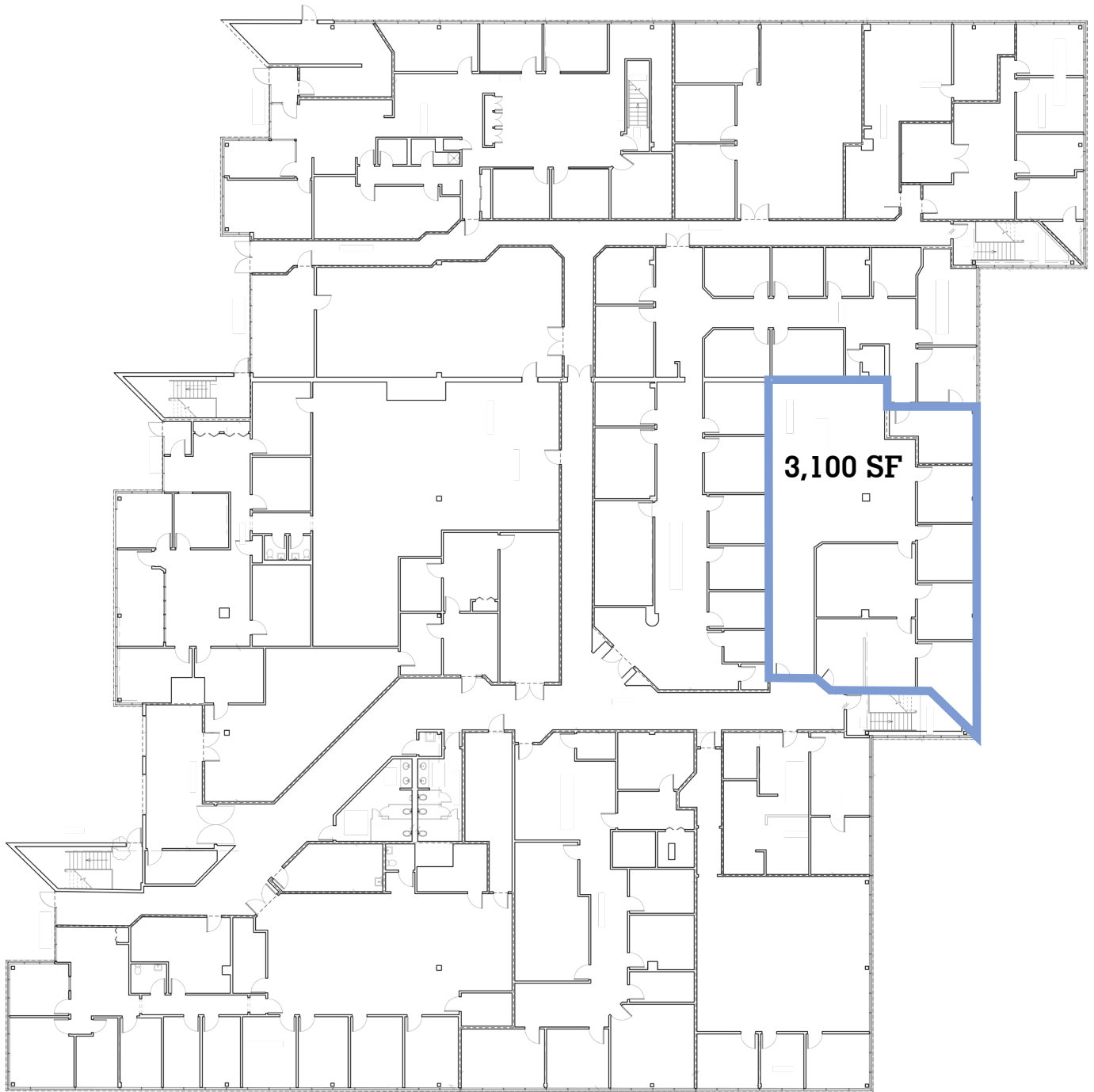
Convenient suburban  
location



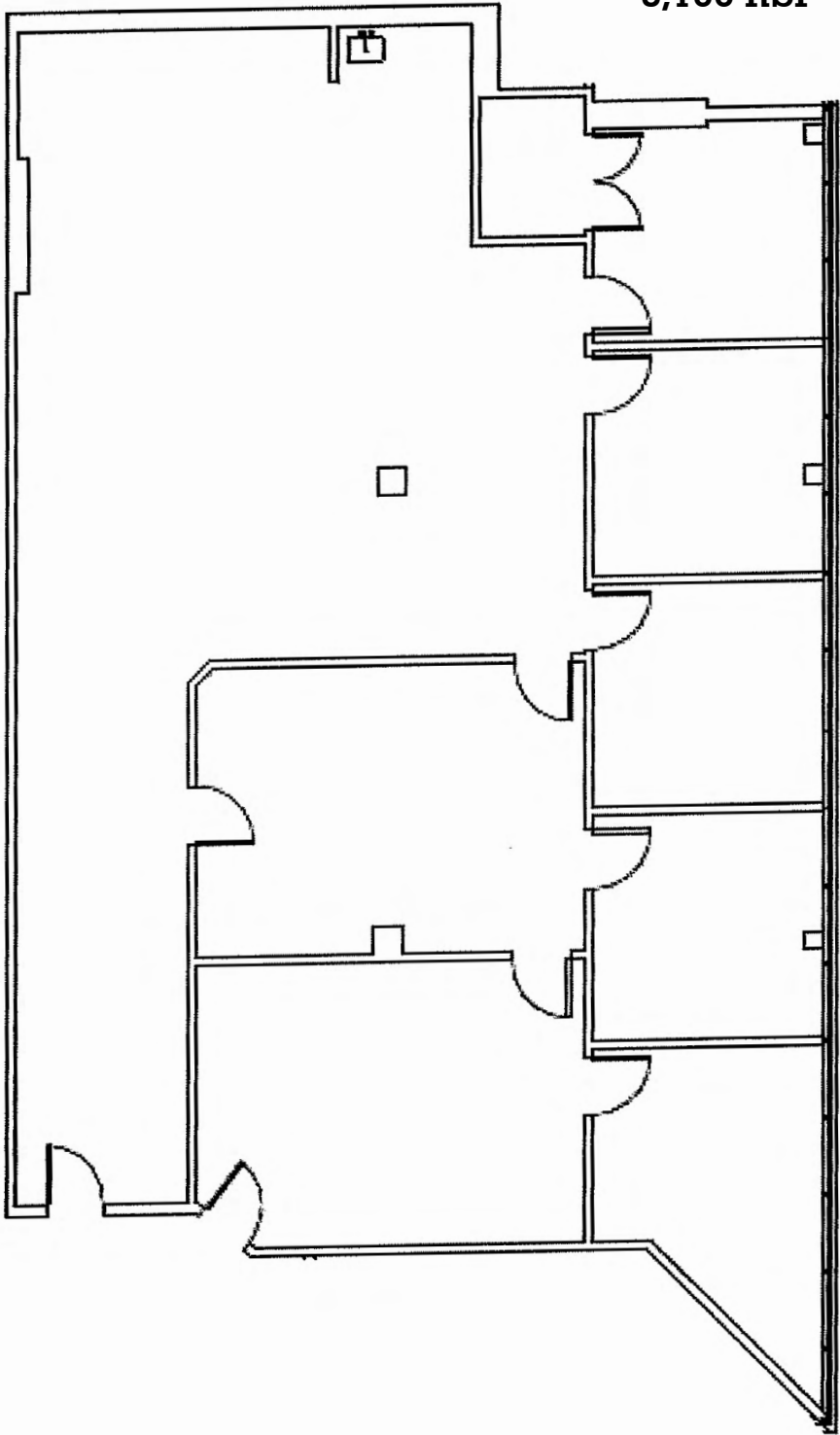
## Building specifications

Building size:	72,000 SF	Power:	4,000 Amps   3-phase
Available space:	2 <sup>nd</sup> Floor - 3,100 SF	Roof:	Rubber membrane
Lot size:	3.81 Acres	Sprinklers:	Wet
Zoning:	IP	HVAC:	Fully air-conditioned
Loading:	Multiple docks	Water/sewer:	City of Peabody
		Parking:	2.25/1,000

# 2<sup>nd</sup> floor - 3,100 SF



3,100 RSF



# 2 Centennial Drive Peabody, MA



**Jason Levendusky**  
617 448 4004  
[jason.levendusky@avisonyoung.com](mailto:jason.levendusky@avisonyoung.com)

**Michael Dalton**  
617 838 0022  
[michael.dalton@avisonyoung.com](mailto:michael.dalton@avisonyoung.com)

**Jay Carnevale**  
617 548 0129  
[jay.carnevale@avisonyoung.com](mailto:jay.carnevale@avisonyoung.com)

200 State Street | 15th Floor | Boston, MA 02109 | [avisonyoung.com](http://avisonyoung.com)

© 2025. Avison Young. Information contained herein was obtained from sources deemed reliable and, while thought to be correct, have not been verified. Avison Young does not guarantee the accuracy or completeness of the information presented, nor assumes any responsibility or liability for any errors or omissions therein.

**AVISON  
YOUNG**