



MEDICAL OFFICE

SPACE FOR LEASE



Metroview Professional Bldg

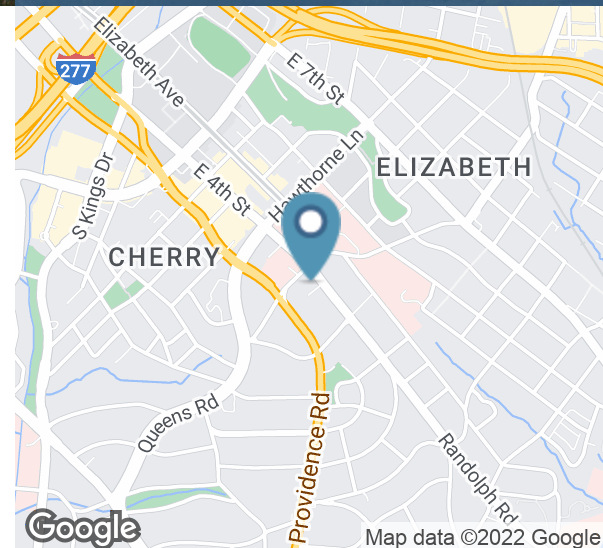
1900 RANDOLPH RD
CHARLOTTE, NC 28207

PROPERTY HIGHLIGHTS

- Parking deck with quick access to the adjacent medical office buildings and Novant Health Presbyterian Medical Center via Sky Bridges.
- Within walking distance of Novant Health Orthopedic Hospital and Atrium Health Mercy.
- On-site building management.

LOCATION OVERVIEW

Centrally located within medical district on Randolph Rd.



For More Information:

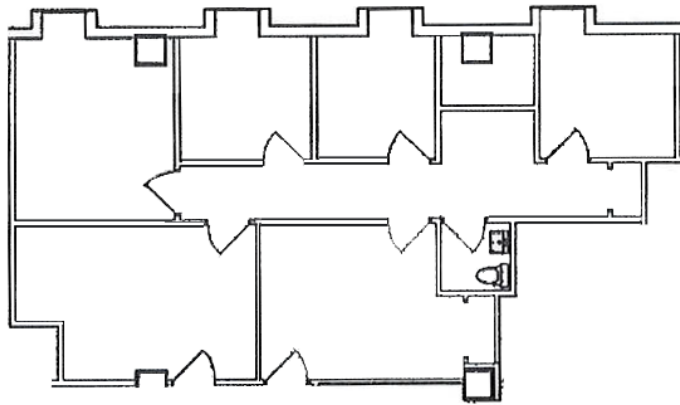
COLIN STEWART

704.962.1387

Colin.Stewart@MeadowsandOhly.com

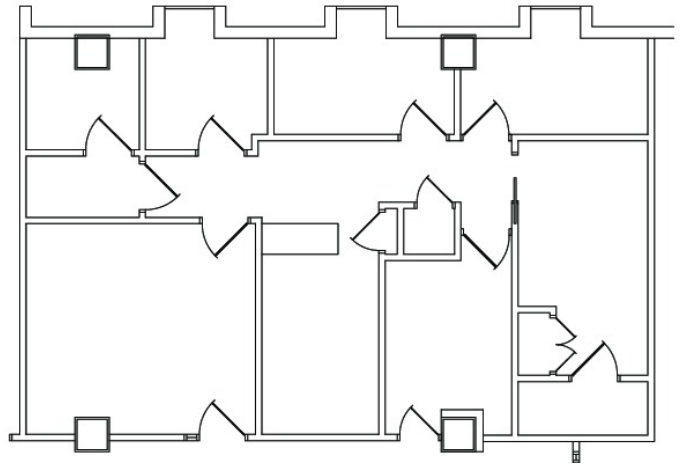
Professionally Managed & Leased by:

Meadows & Ohly



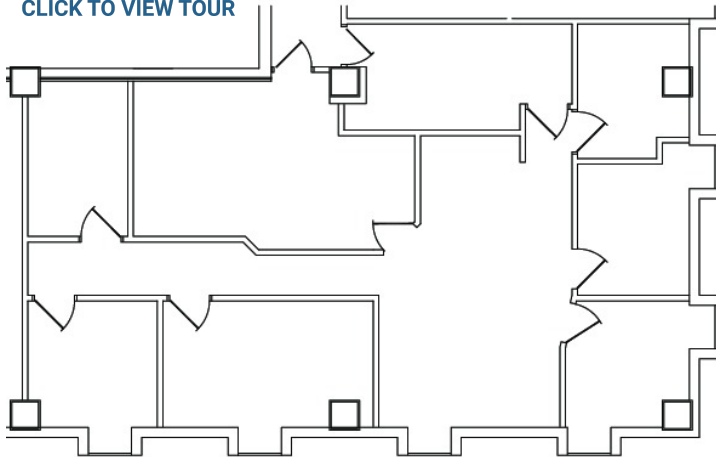
SUITE 304

1,192 RSF



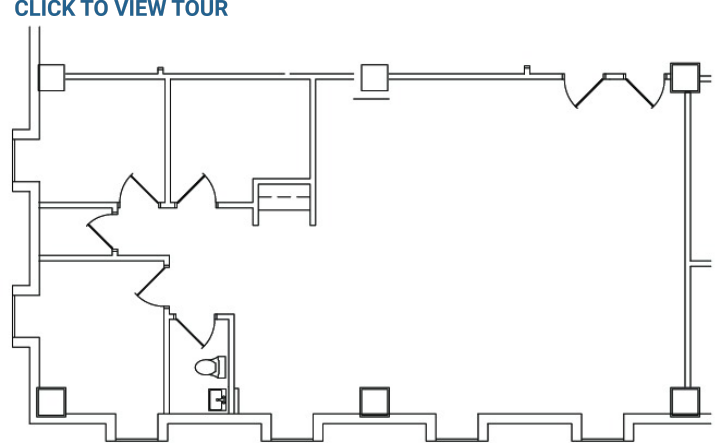
SUITE 404

1,176 RSF



SUITE 606

1,541 RSF



SUITE 701

1,445 RSF

For More Information:

COLIN STEWART

704.962.1387

Colin.Stewart@MeadowsandOhly.com

Professionally Managed & Leased by:

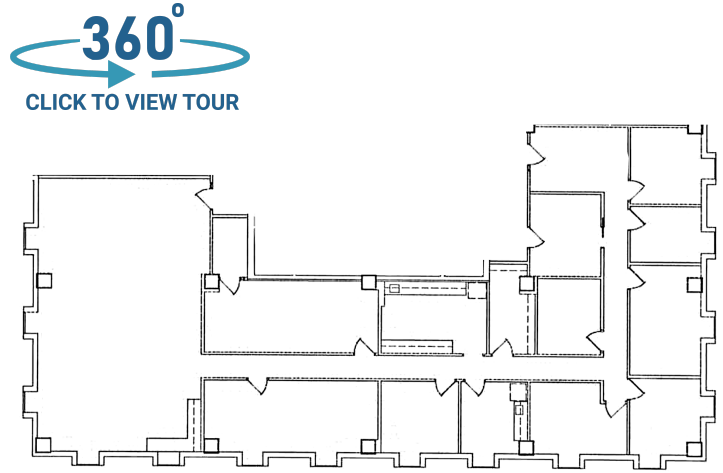
Meadows & Ohly

FLOOR PLANS



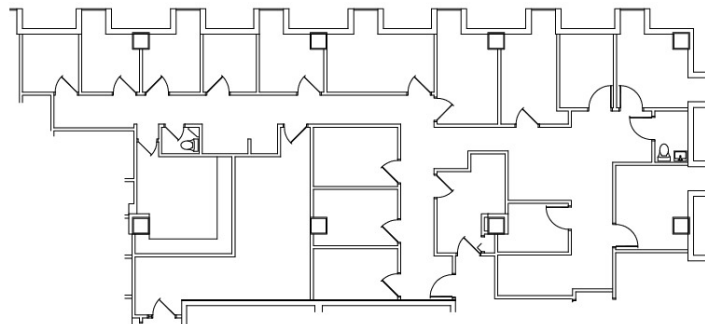
SUITE 708

4,643 RSF



SUITE 804

4,056 RSF



SUITE 1016

2,142 RSF

For More Information:

COLIN STEWART

704.962.1387

Colin.Stewart@MeadowsandOhly.com

Professionally Managed & Leased by:

Meadows & Ohly

DEMOGRAPHICS MAP



POPULATION

	1 MILE	3 MILES	5 MILES
Total population	9,917	87,437	221,005
Median age	37.9	34.7	35.3
Median age (Male)	38.0	34.2	33.8
Median age (Female)	37.4	35.1	36.4

HOUSEHOLDS & INCOME

	1 MILE	3 MILES	5 MILES
Total households	4,695	41,248	97,370
# of persons per HH	2.1	2.1	2.3
Average HH income	\$128,278	\$101,955	\$79,299
Average house value	\$527,779	\$518,840	\$385,271

* Demographic data derived from 2020 ACS - US Census

For More Information:

COLIN STEWART

704.962.1387

Colin.Stewart@MeadowsandOhly.com

Professionally Managed & Leased by: